

# SPACERS

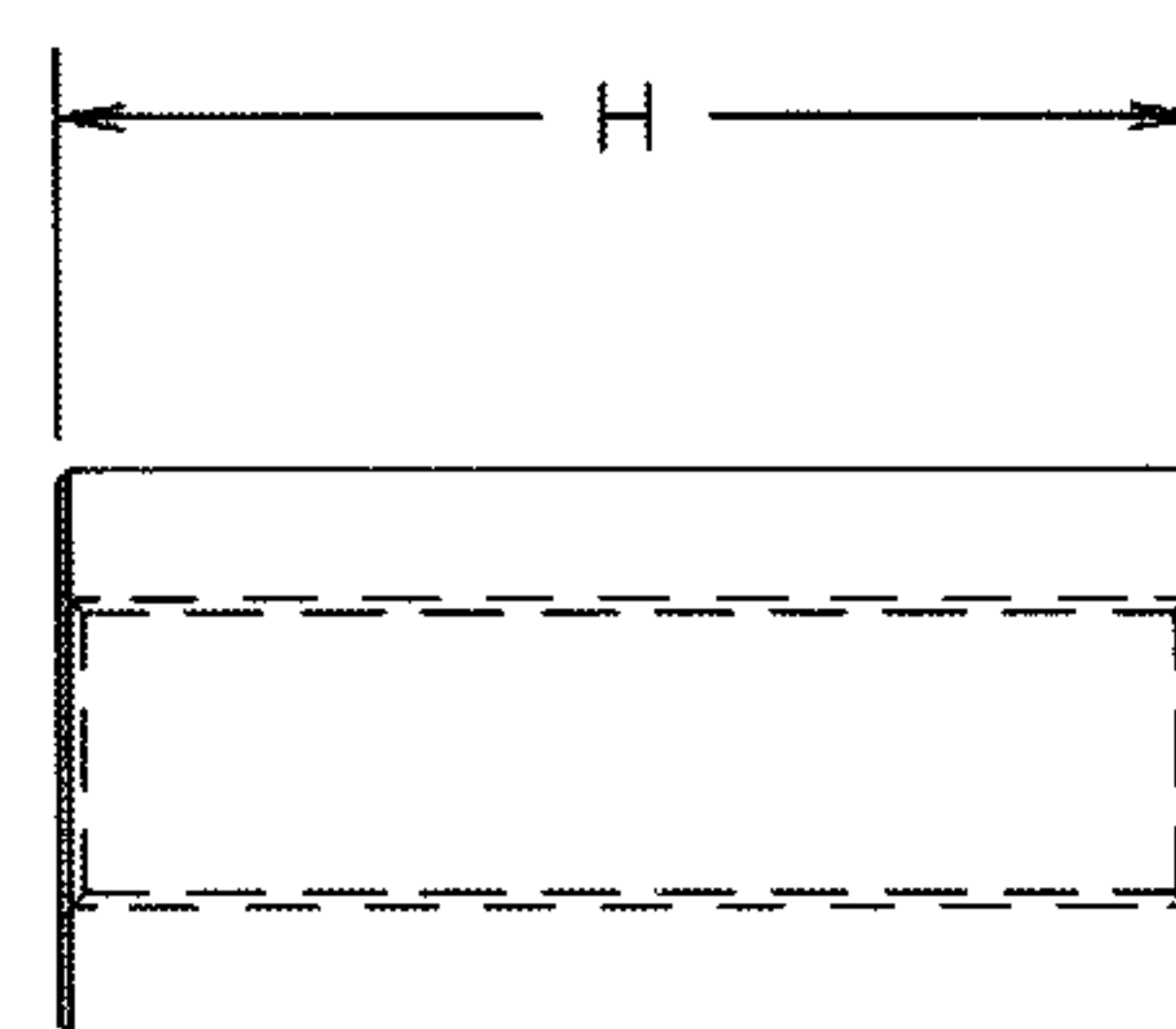
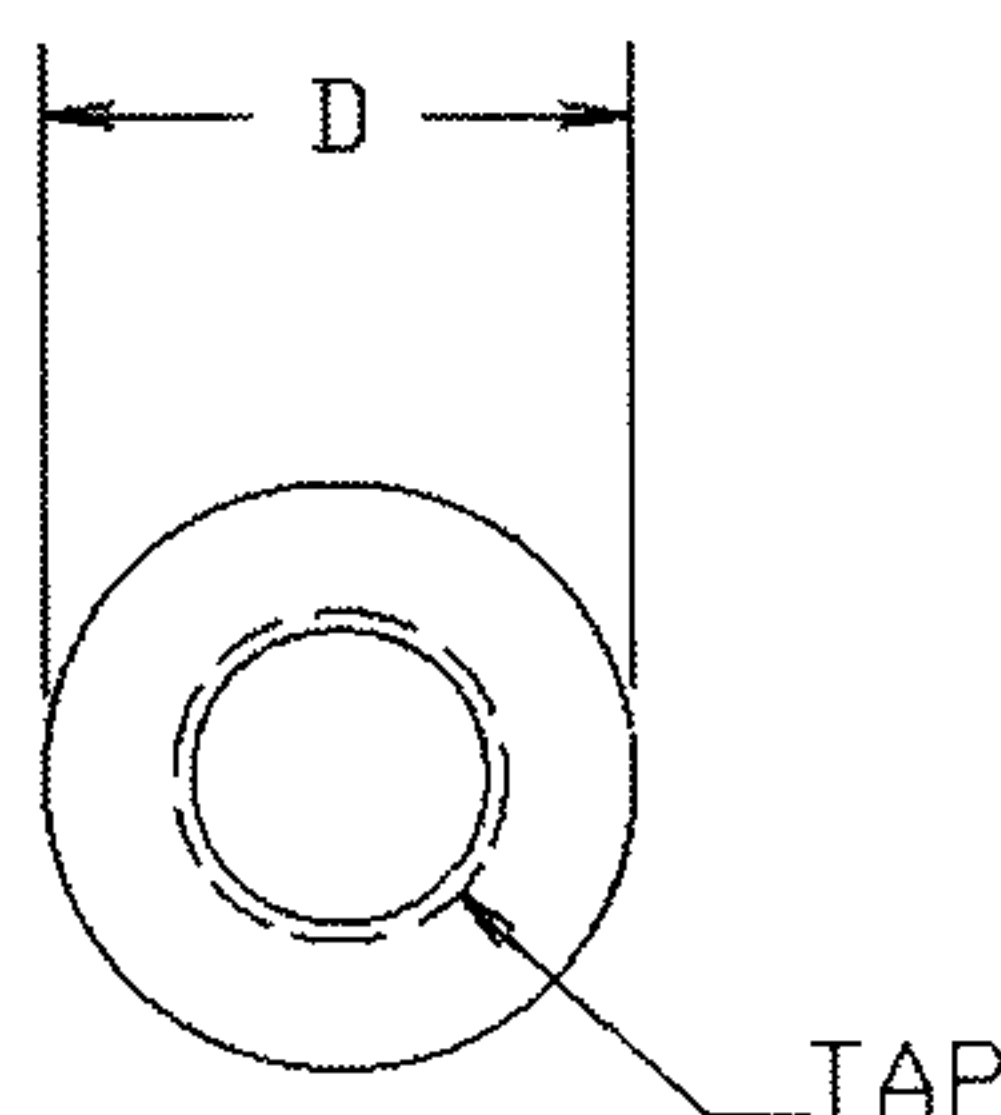
## THREADED , ROUND

**5XX-9XXX-02 BRASS PER ASTM B16**

**6XXA-9XXX-XX ALUMINUM PER ASTM B211**

BASIC PART NO.

FINISH



H	D	TAP	BRASS	ALUMINUM	H	D	TAP	BRASS	ALUMINUM
.188	.156	2-56	538-9203	638A-9203	.125	.250	6-32	543-9602	643A-9602
.250	.156	2-56	538-9204	638A-9204	.188	.250	6-32	543-9603	643A-9603
.312	.156	2-56	538-9205	638A-9205	.250	.250	6-32	543-9604	643A-9604
.375	.156	2-56	538-9206	638A-9206	.312	.250	6-32	543-9605	643A-9605
.125	.188	2-56	542-9202	642A-9202	.375	.250	6-32	543-9606	643A-9606
.188	.188	2-56	542-9203	642A-9203	.437	.250	6-32	543-9607	643A-9607
.250	.188	2-56	542-9204	642A-9204	.500	.250	6-32	543-9608	643A-9608
.312	.188	2-56	542-9205	642A-9205	.562	.250	6-32	543-9609	643A-9609
.375	.188	2-56	542-9206	642A-9206	.625	.250	6-32	543-9610	643A-9610
.437	.188	2-56	542-9207	642A-9207	.687	.250	6-32	543-9611	643A-9611
.500	.188	2-56	542-9208	642A-9208	.750	.250	6-32	543-9612	643A-9612
.562	.188	2-56	542-9209	642A-9209	.812	.250	6-32	543-9613	643A-9613
.625	.188	2-56	542-9210	642A-9210	.875	.250	6-32	543-9614	643A-9614
.687	.188	2-56	542-9211	642A-9211	.937	.250	6-32	543-9615	643A-9615
.750	.188	2-56	542-9212	642A-9212	1.000	.250	6-32	543-9616	643A-9616
.812	.188	2-56	542-9213	642A-9213	1.250	.250	6-32	543-9620	643A-9620
.875	.188	2-56	542-9214	642A-9214	1.500	.250	6-32	543-9624	643A-9624
.937	.188	2-56	542-9215	642A-9215	1.750	.250	6-32	543-9628	643A-9628
1.000	.188	2-56	542-9216	642A-9216	2.000	.250	6-32	543-9632	643A-9632
.125	.188	4-40	542-9402	642A-9402	2.250	.250	6-32	543-9636	643A-9636
.188	.188	4-40	542-9403	642A-9403	2.500	.250	6-32	543-9640	643A-9640
.250	.188	4-40	542-9404	642A-9404	.125	.250	8-32	543-9802	643A-9802
.312	.188	4-40	542-9405	642A-9405	.188	.250	8-32	543-9803	643A-9803
.375	.188	4-40	542-9406	642A-9406	.250	.250	8-32	543-9804	643A-9804
.437	.188	4-40	542-9407	642A-9407	.312	.250	8-32	543-9805	643A-9805
.500	.188	4-40	542-9408	642A-9408	.375	.250	8-32	543-9806	643A-9806
.562	.188	4-40	542-9409	642A-9409	.437	.250	8-32	543-9807	643A-9807
.625	.188	4-40	542-9410	642A-9410	.500	.250	8-32	543-9808	643A-9808
.687	.188	4-40	542-9411	642A-9411	.562	.250	8-32	543-9809	643A-9809
.750	.188	4-40	542-9412	642A-9412	.625	.250	8-32	543-9810	643A-9810
.812	.188	4-40	542-9413	642A-9413	.687	.250	8-32	543-9811	643A-9811
.875	.188	4-40	542-9414	642A-9414	.750	.250	8-32	543-9812	643A-9812
.937	.188	4-40	542-9415	642A-9415	.812	.250	8-32	543-9813	643A-9813
1.000	.188	4-40	542-9416	642A-9416	.875	.250	8-32	543-9814	643A-9814
.125	.250	4-40	543-9402	643A-9402	.937	.250	8-32	543-9815	643A-9815
.188	.250	4-40	543-9403	643A-9403	1.000	.250	8-32	543-9816	643A-9816
.250	.250	4-40	543-9404	643A-9404	1.500	.250	8-32	543-9824	643A-9824
.312	.250	4-40	543-9405	643A-9405	2.000	.250	8-32	543-9832	643A-9832
.375	.250	4-40	543-9406	643A-9406	.250	.375	8-32	544-9804	644A-9804
.437	.250	4-40	543-9407	643A-9407	.375	.375	8-32	544-9806	644A-9806
.500	.250	4-40	543-9408	643A-9408	.500	.375	8-32	544-9808	644A-9808
.562	.250	4-40	543-9409	643A-9409	.625	.375	8-32	544-9810	644A-9810
.625	.250	4-40	543-9410	643A-9410	.750	.375	8-32	544-9812	644A-9812
.687	.250	4-40	543-9411	643A-9411	1.000	.375	8-32	544-9816	644A-9816
.750	.250	4-40	543-9412	643A-9412					
.812	.250	4-40	543-9413	643A-9413					
.875	.250	4-40	543-9414	643A-9414					
.937	.250	4-40	543-9415	643A-9415					
1.000	.250	4-40	543-9416	643A-9416					
1.500	.250	4-40	543-9424	643A-9424					
2.000	.250	4-40	543-9432	643A-9432					

- FOR BRASS PARTS, ADD -02 SUFFIX TO PART NUMBER
- FOR STANDARD NICKEL FINISH
- FOR ALUMINUM PARTS, ADD -17 SUFFIX TO PART NUMBER
- FOR STANDARD NON-CHROMATE CLEAR PROTECTIVE COATING OR -16 FOR YELLOW IRRIDITE FINISH.

FOR ADDITIONAL SIZES AND MATERIALS, CONTACT FACTORY



## X-ON Electronics

Largest Supplier of Electrical and Electronic Components

*Click to view similar products for [Standoffs & Spacers](#) category:*

*Click to view products by [Concord](#) manufacturer:*

Other Similar products are found below :

[M0513-3-N](#) [M0516-3-N](#) [M0517-3-N](#) [M0518-3-N](#) [M0521-3-N](#) [M0524-3-N](#) [M0532-35-AL](#) [M0532-35-N](#) [M0543-4-AL](#) [M0544-35-N](#) [M0544-3-N](#) [M0545-3-AL](#) [M0553-3-N](#) [M0564-4-N](#) [M0608-5-SS](#) [M0609-5-SS](#) [M0610-35-AL](#) [M0613-3-N](#) [M0651-5-SS](#) [M0653-35-N](#) [M0654-4-SS](#) [M0655-5-AL](#) [M0655-5-N](#) [M0660-4-AL](#) [M0660-4-N](#) [M0670-35-N](#) [M0671-5-N](#) [M0671-5-SS](#) [M0722-5-N](#) [M0725-6-N](#) [M0731-4-N](#) [M0904-B-25-AL](#) [M1273-2545-AL](#) [M1273-3005-AL](#) [M1303-3506-AL](#) [M1307-3506-AL](#) [M1313-3005-N](#) [M1313-4007-AL](#) [M1314-3005-AL](#) [M1314-3005-SS](#) [M1315-3005-SS](#) [M1315-4007-N](#) [M1317-3506-AL](#) [M1317-4007-SS](#) [M1318-3005-SS](#) [M1320-3005-AL](#) [M1320-3005-N](#) [M1321-3005-SS](#) [M1321-4007-AL](#) [M1322-4007-N](#)