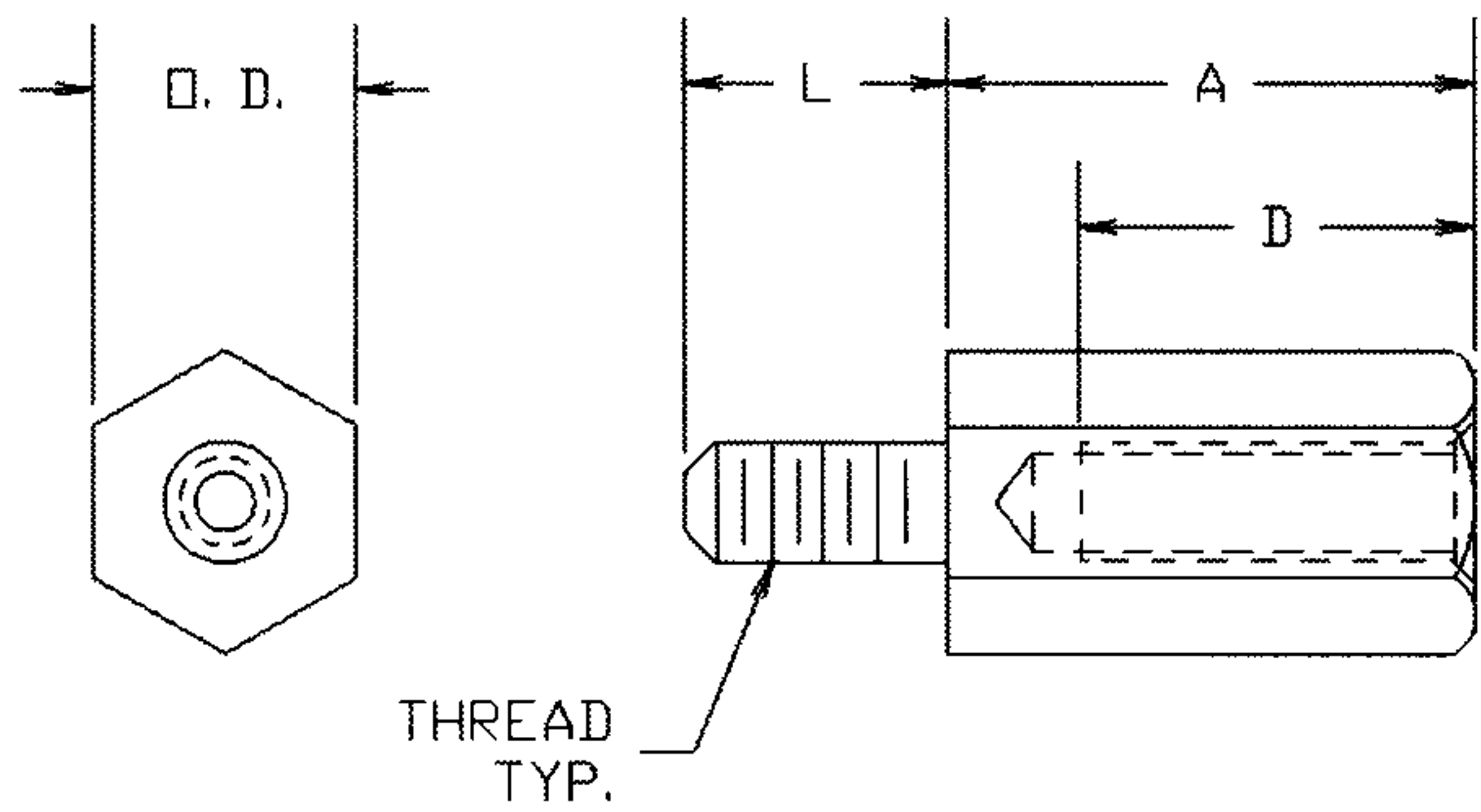


MALE/FEMALE STANDOFFS

MALE/FEMALE STANDOFFS 1/4" & 3/16" HEX.



FOR 1/4" AND 3/16" HEX			
THREAD SIZE	L	D†	†FOR SHORT "A" LENGTHS, THE "D" DEPTH MAY BE LESS
4-40	3/16	1/4	
6-32	1/4	3/8	
8-32	3/8	7/16	
FOR 1/4" NYLON HEX			
THREAD SIZE	L	D†	†FOR SHORT "A" LENGTHS, THE "D" DEPTH MAY BE LESS
4-40	3/16	3/16 MIN.	
6-32	1/4	1/4 MIN.	
8-32	3/8	3/8 MIN.	

66XA-9XXX-XX ALUMINUM PER ASTM B211

BASIC PART NO. FINISH*

56XA-9XXX-02 BRASS PER ASTM B16

BASIC PART NO. FINISH*

LENGTH "A"	O.D.	4-40	6-32	8-32
.250	.188	662A-9404	662A-9604	-
.375	.188	662A-9406	662A-9606	-
.500	.188	662A-9408	662A-9608	-
.625	.188	662A-9410	662A-9610	-
.750	.188	662A-9412	662A-9612	-
1.000	.188	662A-9416	662A-9616	-
.250	.250	660A-9404	660A-9604	660A-9804
.312	.250	660A-9405	660A-9605	-
.375	.250	660A-9406	660A-9606	660A-9806
.437	.250	660A-9407	660A-9607	-
.500	.250	660A-9408	660A-9608	660A-9808
.562	.250	660A-9409	660A-9609	-
.625	.250	660A-9410	660A-9610	660A-9810
.750	.250	660A-9412	660A-9612	660A-9812
.875	.250	660A-9414	660A-9614	660A-9814
1.000	.250	660A-9416	660A-9616	660A-9816
1.125	.250	660A-9418	660A-9618	660A-9818
1.250	.250	660A-9420	660A-9620	660A-9820
1.375	.250	660A-9422	660A-9622	660A-9822
1.500	.250	660A-9424	660A-9624	660A-9824
1.625	.250	660A-9426	660A-9626	660A-9826
1.750	.250	660A-9428	660A-9628	660A-9828
2.000	.250	660A-9432	660A-9632	660A-9832
2.500	.250	660A-9440	660A-9640	660A-9840
3.000	.250	660A-9448	660A-9648	660A-9848

LENGTH "A"	O.D.	4-40	6-32	8-32
.250	.188	562-9404	562-9604	-
.375	.188	562-9406	562-9606	-
.500	.188	562-9408	562-9608	-
.625	.188	562-9410	562-9610	-
.750	.188	562-9412	562-9612	-
1.000	.188	562-9416	562-9616	-
.250	.250	560-9404	560-9604	560-9804
.312	.250	560-9405	560-9605	-
.375	.250	560-9406	560-9606	560-9806
.437	.250	560-9407	560-9607	-
.500	.250	560-9408	560-9608	560-9808
.562	.250	560-9409	560-9609	-
.625	.250	560-9410	560-9610	560-9810
.750	.250	560-9412	560-9612	560-9812
.875	.250	560-9414	560-9614	560-9814
1.000	.250	560-9416	560-9616	560-9816
1.125	.250	560-9418	560-9618	560-9818
1.250	.250	560-9420	560-9620	560-9820
1.375	.250	560-9422	560-9622	560-9822
1.500	.250	560-9424	560-9624	560-9824
1.625	.250	560-9426	560-9626	560-9826
1.750	.250	560-9428	560-9628	560-9828
2.000	.250	560-9432	560-9632	560-9832
2.500	.250	560-9440	560-9640	560-9840
3.000	.250	560-9448	560-9648	560-9848

*FOR ALUMINUM PARTS, ADD -17 SUFFIX TO PART NUMBER FOR STANDARD NON-CHROMATE CLEAR PROTECTIVE COATING OR -16 FOR YELLOW IRRIDITE FINISH.

*FOR BRASS PARTS, ADD -02 SUFFIX TO PART NUMBER FOR STANDARD NICKEL FINISH

46XS-9XXX STAINLESS STEEL PER ASTM A314 / A581 / A582

BASIC PART NO.

LENGTH "A"	O.D.	4-40	6-32	8-32
.250	.188	462S-9404	462S-9604	-
.375	.188	462S-9406	462S-9606	-
.500	.188	462S-9408	462S-9608	-
.625	.188	462S-9410	462S-9610	-
.750	.188	462S-9412	462S-9612	-
1.000	.188	462S-9416	462S-9616	-
.250	.250	460S-9404	460S-9604	460S-9804
.375	.250	460S-9406	460S-9606	460S-9806
.500	.250	460S-9408	460S-9608	460S-9808
.625	.250	460S-9410	460S-9610	460S-9810
.750	.250	460S-9412	460S-9612	460S-9812
.875	.250	460S-9414	460S-9614	460S-9814
1.000	.250	460S-9416	460S-9616	460S-9816
1.125	.250	460S-9418	460S-9618	460S-9818
1.250	.250	460S-9420	460S-9620	460S-9820
1.375	.250	460S-9422	460S-9622	460S-9822
1.500	.250	460S-9424	460S-9624	460S-9824
1.625	.250	460S-9426	460S-9626	460S-9826
1.750	.250	460S-9428	460S-9628	460S-9828
2.000	.250	460S-9432	460S-9632	460S-9832

775-18XX NYLON 6/6 PER ASTM D4066

BASIC PART NO.

LENGTH "A"	O.D.	4-40	6-32	8-32
.250	.250	775-1801	775-1821	775-1841
.375	.250	775-1802	775-1822	775-1842
.500	.250	775-1803	775-1823	775-1843
.625	.250	775-1804	775-1824	775-1844
.750	.250	775-1805	775-1825	775-1845
.875	.250	775-1806	775-1826	775-1846
1.000	.250	775-1807	775-1827	775-1847
1.125	.250	775-1808	775-1828	775-1848
1.250	.250	775-1809	775-1829	775-1849
1.375	.250	775-1810	775-1830	775-1850
1.500	.250	775-1811	775-1831	775-1851
1.625	.250	775-1812	775-1832	775-1852
1.750	.250	775-1813	775-1833	775-1853
2.000	.250	775-1814	775-1834	775-1854

NOTE: OTHER SIZES ARE AVAILABLE ON ORDER.

FOR ADDITIONAL SIZES AND MATERIALS, CONTACT FACTORY



800-847-4162 (Outside N.Y.S.)
Ph: 212-777-6571 Fax: 212-991-0161
sales@concord-electronics.com
engineering@concord-electronics.com

X-ON Electronics

Largest Supplier of Electrical and Electronic Components

Click to view similar products for [Standoffs & Spacers](#) category:

Click to view products by [Concord](#) manufacturer:

Other Similar products are found below :

[M0513-3-N](#) [M0516-3-N](#) [M0517-3-N](#) [M0518-3-N](#) [M0521-3-N](#) [M0524-3-N](#) [M0532-35-AL](#) [M0532-35-N](#) [M0543-4-AL](#) [M0544-35-N](#) [M0544-3-N](#) [M0545-3-AL](#) [M0553-3-N](#) [M0564-4-N](#) [M0608-5-SS](#) [M0609-5-SS](#) [M0610-35-AL](#) [M0613-3-N](#) [M0651-5-SS](#) [M0653-35-N](#) [M0654-4-SS](#) [M0655-5-AL](#) [M0655-5-N](#) [M0660-4-AL](#) [M0660-4-N](#) [M0670-35-N](#) [M0671-5-N](#) [M0671-5-SS](#) [M0722-5-N](#) [M0725-6-N](#) [M0731-4-N](#) [M0904-B-25-AL](#) [M1273-2545-AL](#) [M1273-3005-AL](#) [M1303-3506-AL](#) [M1307-3506-AL](#) [M1313-3005-N](#) [M1313-4007-AL](#) [M1314-3005-AL](#) [M1314-3005-SS](#) [M1315-3005-SS](#) [M1315-4007-N](#) [M1317-3506-AL](#) [M1317-4007-SS](#) [M1318-3005-SS](#) [M1320-3005-AL](#) [M1320-3005-N](#) [M1321-3005-SS](#) [M1321-4007-AL](#) [M1322-4007-N](#)