

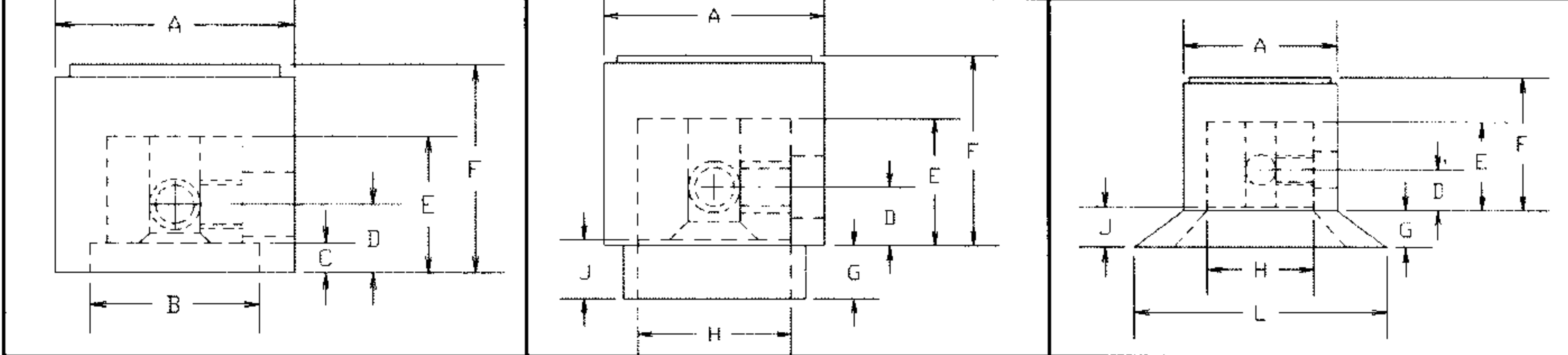
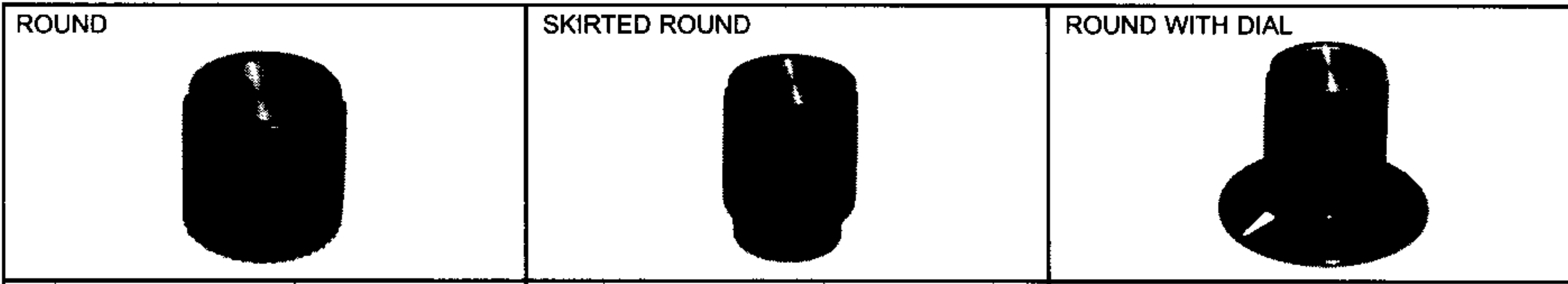
INSTRUMENTATION KNOBS

MATERIAL:

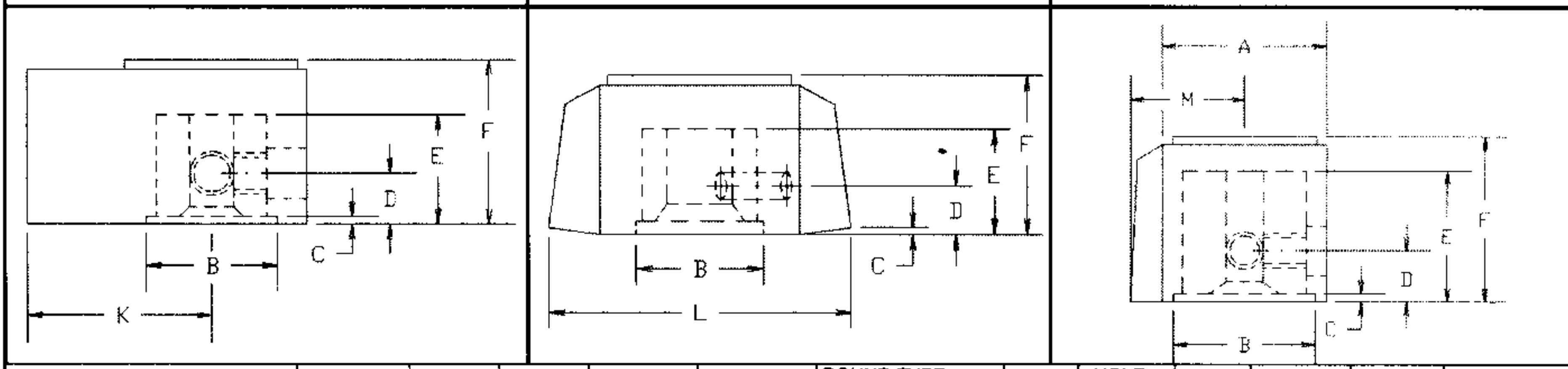
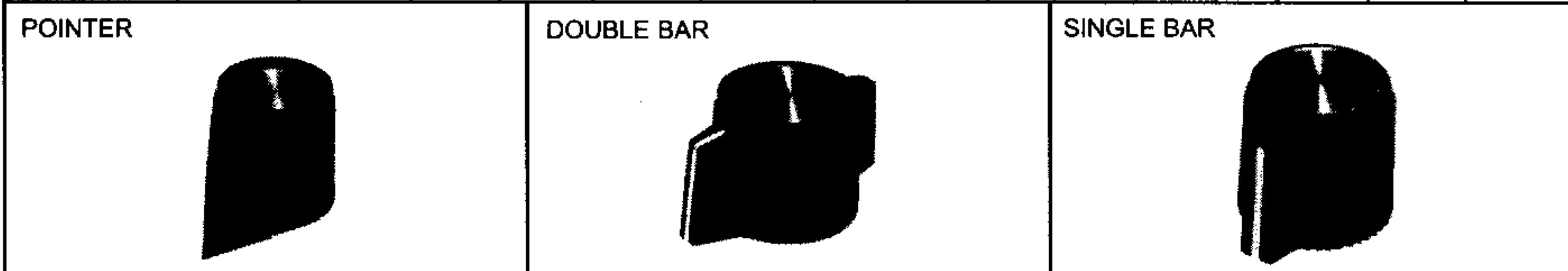
KNOB: Black ABS

INLAY: Spun aluminum with clear coated finish

BUSHING INSERT: Aluminum (Supplied with two set screws)



PART NUMBER		STYLE	KNOB DIA.	SHAFT DIA.	(2) SET SCREW	A +.025/-0.005	ROUND TYPE NUT CLEARANCE			HOLE DEPTH			SKIRTED & DIAL NUT CLEARANCE		
WITH INDICATOR	PLAIN						B MIN.	C MIN.	D MAX.	E MIN.	F ±.030	G ±.030	H MIN.	J MIN.	L MAX.
790-1250	790-1255	ROUND	.500	.125	4-40	.505	.435	.026	.158	.405	.510	-	-	-	-
790-1251	790-1256		.700	.250	4-40	.700	.485	.026	.187	.405	.610	-	-	-	-
790-1252	790-1257		.900	.250	8-32	.905	.640	.114	.260	.520	.790	-	-	-	-
790-1253	790-1258		1.250	.250	8-32	1.250	.750	.114	.260	.455	.700	-	-	-	-
790-1260	790-1265	SKIRTED ROUND	.500	.125	4-40	.505	-	-	.158	.405	.510	.150	.360	.177	-
790-1261	790-1266		.700	.250	4-40	.705	-	-	.187	.405	.610	.170	.485	.188	-
790-1262	790-1267		.900	.250	8-32	.905	-	-	.260	.520	.790	.220	.640	.320	-
790-1263	790-1268		1.250	.250	8-32	1.250	-	-	.250	.455	.700	.150	.750	.250	-
790-1270	790-1275	ROUND WITH DIAL	.500	.125	4-40	.505	-	-	.158	.405	.510	.150	.360	.177	.900
790-1271	790-1276		.700	.250	4-40	.700	-	-	.187	.405	.610	.170	.485	.188	1.150
790-1272	790-1277		.900	.250	8-32	.905	-	-	.260	.520	.790	.220	.640	.320	1.525
790-1273	790-1278		1.250	.250	8-32	1.250	-	-	.250	.455	.700	.150	.750	.250	1.860



PART NUMBER		STYLE	KNOB DIA.	SHAFT DIA.	(2) SET SCREW	A +.025/-0.005	ROUND TYPE NUT CLEARANCE			HOLE DEPTH			K +.025/-0.005	L	M MAX. MAX.
WITH INDICATOR	PLAIN						B MIN.	C MIN.	D MAX.	E MIN.	F ±.030				
-	790-1280	POINTER	.500	.125	4-40	-	.435	.026	.158	.405	.510	.490	-	-	-
-	790-1281		.700	.250	4-40	-	.485	.026	.187	.405	.610	.680	-	-	-
-	790-1282		.900	.250	8-32	-	.640	.114	.260	.520	.790	.885	-	-	-
790-1283		DOUBLE BAR	.700	.250	4-40	-	.485	.026	.187	.405	.610	-	1.150	-	-
790-1284			.900	.250	8-32	-	.640	.114	.260	.520	.790	-	1.525	-	-
790-1285		SINGLE BAR	.500	.125	4-40	.505	.435	.026	.158	.405	.510	-	-	.350	-
790-1286			.700	.250	4-40	.700	.485	.026	.187	.405	.610	-	-	.460	-
790-1287			.900	.250	8-32	.905	.640	.114	.260	.520	.790	-	-	.590	-



X-ON Electronics

Largest Supplier of Electrical and Electronic Components

Click to view similar products for [Switch Accessories](#) category:

Click to view products by [Concord](#) manufacturer:

Other Similar products are found below :

[896809000](#) [01500](#) [01010](#) [01501](#) [7101MD9V30B](#) [7103KZBE](#) [7103P3YAVGE](#) [7209MD9ABE](#) [7209SY9AQE](#) [7209SYCBE](#) [7303KZQE](#)
[F1302](#) [F1403](#) [760201000](#) [764300000](#) [785105000](#) [785106000](#) [789009000](#) [7T0062](#) [7T0073](#) [MJ1216](#) [MJ33](#) [MJ612](#) [849PT01A](#)
[91321314655637182-1-MEV](#) [A0107X](#) [A0141A](#) [A0141E](#) [A0142M2SP](#) [A0142N5](#) [A0143G](#) [A0143H](#) [A0161G](#) [A0162A](#) [A0162F](#) [A019307](#)
[A01RTC8](#) [A0214X](#) [A0215X](#) [A02504](#) [A02512](#) [A0261A](#) [A0263D](#) [A029303](#) [A02MXB](#) [A168P1](#) [A274](#) [A3A-7310](#) [A3PA571124E](#) [A466](#)