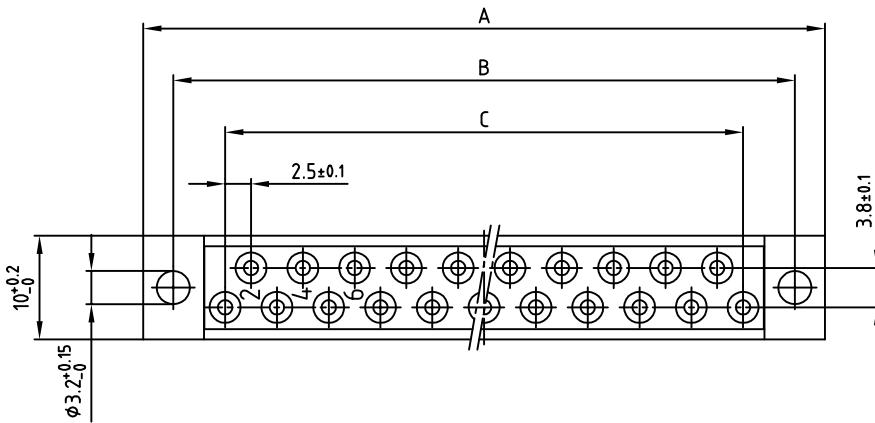
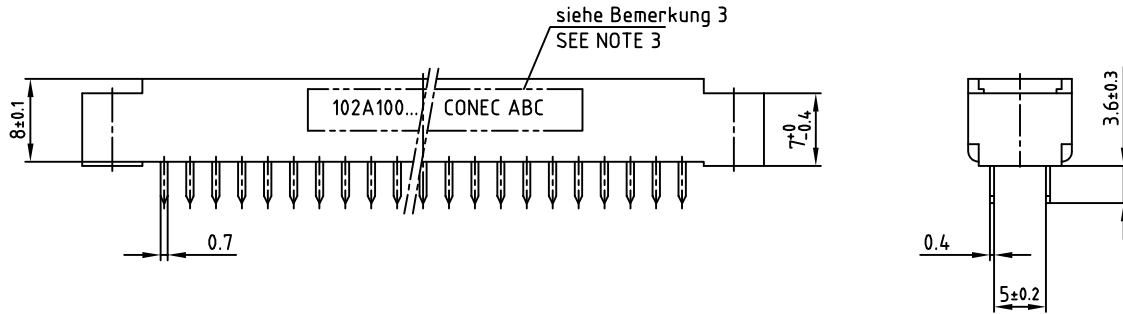
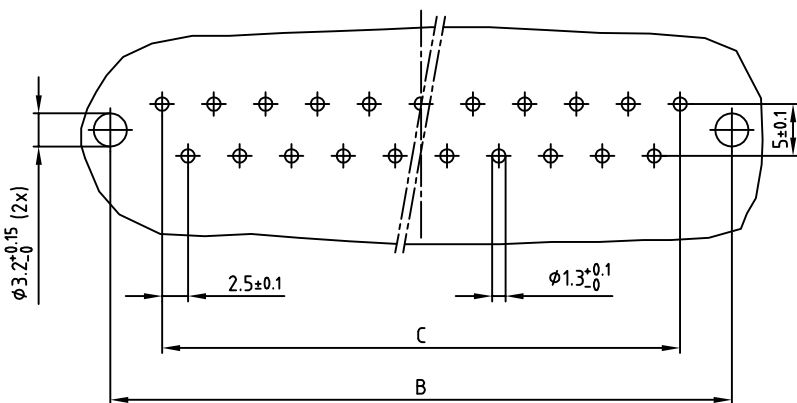


used for: DIN 41617

Part-NO.	POS.	A -0.3	B ± 0.1	C ± 0.1
102A10059X	13	45.8	40	12x2.5=30
102A10079X	21	65.8	60	20x2.5=50
102A10099X	31	90.8	85	30x2.5=75



Leiterplattenbohrbild
P.C.B.-HOLE DRILLINGS (b)



- Bemerkung: (b)
1. Isolierkörper: PC GF UL 94 V-1, grau (c)
 2. Kontakte: Cu-Legierung
Veredelung: min. Au über min. Ni
 3. Bedruckung: [Art.-Nr. CONEC ABC]

- NOTES:
1. INSULATOR: PC GF UL 94 V-1, GREY (c)
 2. CONTACTS: COPPER ALLOY
PLATING: GOLD FLASH over NICKEL
 3. CONNECTOR IS PART MARKED: [PART-NO. CONEC ABC]

Directive 2002/95/EC RoHS compliant

THIS DRAWING MAY NOT BE COPIED OR REPRODUCED IN ANY WAY, AND MAY NOT BE PASSED ON TO A THIRD PARTY, WITHOUT WRITTEN PERMISSION. OWNERSHIP AND COPYRIGHT OF CONEC GMBH DO NOT ALTER CAD DRAWING BY HAND

rev.	description	date	name
2 x c	Ä4154	09.11.2011	K.H.
2 x b	Ä3723	18.08.2010	K.H.
a	Original		

tolerance		dim. in mm	
2004	date	name	
drawn	09.03.	Lehmenkühler	
appd.	09.03.	Mickenbecker	
norm	DIN 41617		

scale:	2:1	
material:	SEE NOTES	
title:	FEMALE CONNECTOR 13-31pos. Version "D" with straight solder pins	
dwg no:	10K1A008	DIN-A 3 sh: 1/1
part no:	SEE TABLE	

X-ON Electronics

Largest Supplier of Electrical and Electronic Components

Click to view similar products for [DIN 41612 Connectors](#) category:

Click to view products by [CONEC](#) manufacturer:

Other Similar products are found below :

[004.767](#) [608489050008049](#) [691327-1](#) [74670-0732](#) [74680-0340](#) [75880-0015](#) [76453-0014](#) [86093159ALF](#) [9732967801](#) [QLC260R](#)
[120X10019X](#) [120X10089X](#) [122A10249X](#) [122A11089X](#) [122A13089X](#) [122A10089X](#) [122A10129X](#) [122A10349X](#) [122A13359X](#) [1377391-4](#)
[DIN-048CPC-SR1-MH](#) [1393583-2](#) [1393726-7](#) [140X10129X](#) [143-1913-000](#) [143-1908-000](#) [1484472-1](#) [2110070-1](#) [2110070-2](#) [CBC20T00-](#)
[008FDS5-0-1-002VR](#) [172699-5036](#) [2-1393557-4](#) [2-1437084-2](#) [394506](#) [419-2080-402](#) [419-2085-302](#) [V42254B2202C968](#) [419-2086-201](#) [419-](#)
[2087-002](#) [448657-1](#) [448847-3](#) [5-1393755-9](#) [02990000004](#) [033020](#) [043619](#) [054302](#) [043556](#) [0760557108](#) [09062483201750](#) [0850033067](#)