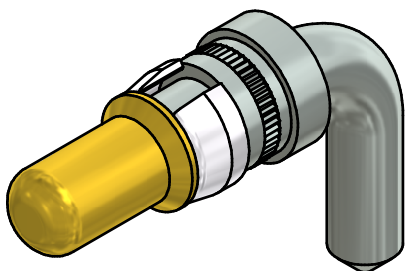


plating	part no.
GOLD FLASH over NICKEL	131A13019X
min. 20µin HARD GOLD over min. 50µin NICKEL	131B13019X
min. 30µin HARD GOLD over min. 50µin NICKEL	131C13019X



Directive 2002/95/EC RoHS compliant

pos	qty	description	material	plating
3	1	RETAINING RING	COPPER ALLOY	NICKEL PLATED
2	1	MATING SIDE	COPPER ALLOY	see table
1	1	REAR SIDE	COPPER ALLOY	TIN PLATED

partlist					tolerance	dim. in mm	scale:	10:1	
							material:	see partlist	
					date	name	title:		
					drawn	23.03.98	HIGH POWER CONTACT MALE		
					appd.	23.03.98	SOLDER PIN 90°, d=2,85mm, 20A		
					norm		D-SUB COMBINATION		
					d-old	SK21H04 / 13K21E0A	dwg no:		
					1 x b	Ä4364	05.07.12	HS	DIN-A3
					a	Original			sh: 1
					rev.	description	date	name	part no:
					CONEC				see table

THIS DRAWING MAY NOT BE COPIED OR REPRODUCED IN ANY WAY, AND MAY NOT BE PASSED ON TO A THIRD PARTY WITHOUT WRITTEN PERMISSION. OWNERSHIP AND COPYRIGHT OF CONEC GmbH DO NOT ALTER CAD DRAWING BY HAND



X-ON Electronics

Largest Supplier of Electrical and Electronic Components

Click to view similar products for [D-Sub Contacts](#) category:

Click to view products by [CONEC](#) manufacturer:

Other Similar products are found below :

[D02-22-26S-10000](#) [8656352067LF](#) [131A15029X](#) [132A11019X](#) [132J22039X](#) [132A11029X](#) [132A11049X](#) [1757912-1](#) [188582-000](#)
[162A11889X](#) [1757913-1](#) [212558-1](#) [030-1955-000](#) [053744-0098](#) [053744-0099](#) [053745-0105](#) [053745-0111](#) [601098N003](#) [86303057NLF](#)
[131A11019X](#) [162A11819X](#) [40-9854MP](#) [1-208778-5](#) [FC120N2](#) [MC7526D/AA](#) [MC8122D/AA](#) [FC4010D-15](#) [FC4006D](#) [121A05329A](#)
[164C16669X](#) [86566620064LF](#) [C330-8997-101H](#) [131A13019X](#) [DLS3XS5AK40X](#) [09692825723](#) [030-1954-000](#) [L17DM53744207](#)
[L17RRD1M11400](#) [030-1952-000](#) [1655496](#) [030-1953-000](#) [030-1953-030](#) [132C11039X](#) [132J15019X](#) [132C15019X](#) [131A10029X](#)
[8638PSC2006LF](#) [8656453067LF](#) [86566520064LF](#) [L17DM537441](#)