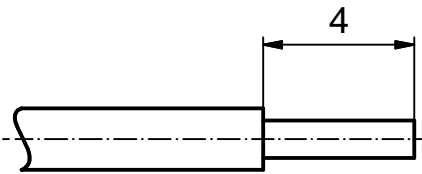


Directive 2002/95/EC
„RoHS“
Compliant

NOTES:

- 1. MATERIAL: COPPER ALLOY
- 2. PLATING: SEE TABLE
- 3. CRIMPING: USE CRIMP TOOL 360X10329X WITH TOOL INSERT 360X20039X
- ⓑ SELECTOR SETTINGS: 7 FOR AWG 24
6 FOR AWG 26
5 FOR AWG 28

STRIPPING DIMENSION



ⓑ	Plating	Part-No.
	min. 8µm HARD GOLD over min. 50µm NICKEL	131A15029X
	min. 30µm HARD GOLD over min. 50µm NICKEL	131C15029X
	min. 50µm HARD GOLD over min. 50µm NICKEL	131J15029X

THIS DRAWING MAY NOT BE COPIED OR REPRODUCED IN ANY WAY, AND MAY NOT BE PASSED ON TO A THIRD PARTY WITHOUT WRITTEN PERMISSION. OWNERSHIP AND COPYRIGHT OF CONEC GmbH

DO NOT ALTER CAD DRAWING BY HAND

3 x b	Ä 3706	03.08.10	Lehm.
a	Origin		
rev.	description	date	name

tolerance		scale:	5.1
	dim. in mm	material:	SEE NOTES
drawn	29.04.08	name	Petker
appd.	30.04.08		Mickenbecker
norm			
d-old			

title:		SIGNAL CRIMP CONTACT MALE CONTACT ⓑ Wire Size 24-28	
dwg no:	Inventor 10	DIN-A4	
part no:		16K1A2290	sh: 1
part no:		SEE TABLE	



X-ON Electronics

Largest Supplier of Electrical and Electronic Components

Click to view similar products for [D-Sub Contacts](#) category:

Click to view products by [CONEC](#) manufacturer:

Other Similar products are found below :

[D02-22-26S-10000](#) [8656352067LF](#) [131A15029X](#) [132A11019X](#) [132J22039X](#) [132A11029X](#) [132A11049X](#) [1757912-1](#) [188582-000](#)
[162A11889X](#) [1757913-1](#) [212558-1](#) [030-1955-000](#) [053744-0098](#) [053744-0099](#) [053745-0105](#) [053745-0111](#) [601098N003](#) [86303057NLF](#)
[131A11019X](#) [162A11819X](#) [40-9854MP](#) [1-208778-5](#) [FC120N2](#) [MC7526D/AA](#) [MC8122D/AA](#) [FC4010D-15](#) [FC4006D](#) [121A05329A](#)
[164C16669X](#) [86566620064LF](#) [C330-8997-101H](#) [131A13019X](#) [DLS3XS5AK40X](#) [09692825723](#) [030-1954-000](#) [L17DM53744207](#)
[L17RRD1M11400](#) [030-1952-000](#) [1655496](#) [030-1953-000](#) [030-1953-030](#) [132C11039X](#) [132J15019X](#) [132C15019X](#) [131A10029X](#)
[8638PSC2006LF](#) [8656453067LF](#) [86566520064LF](#) [L17DM537441](#)