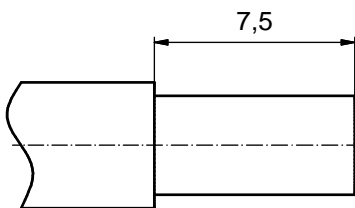


NOTES:

CRIMPING:
 USE CRIMP TOOL: 360X10409X
 WITH TOOL INSERT: 360X20029X
 SELECTOR SETTINGS: 7 FOR AWG 10
 6 FOR AWG 12

| plating | part no. |
|--|-------------------|
| GOLD FLASH over NICKEL | 131A11039X |
| 30µin HARD GOLD over min. 50µin NICKEL | 131C11039X |
| 50µin HARD GOLD over min. 50µin NICKEL | 131J11039X |

STRIPPING DIMENSIONS



Directive 2002/95/EC RoHS compliant

| pos | qty | description | material | plating |
|-----|-----|----------------|--------------|------------------------|
| 3 | 1 | RETAINING RING | COPPER ALLOY | NICKEL PLATED |
| 2 | 1 | REAR SIDE | COPPER ALLOY | GOLD FLASH over NICKEL |
| 1 | 1 | MATING SIDE | COPPER ALLOY | see table |

| partlist | | | | | tolerance | dim. in mm | scale: | |
|----------|--|--|--|--|--------------|---------------------|--------------|-----------|
| | | | | | | | 8:1 | |
| | | | | | | | material: | |
| | | | | | | | see partlist | |
| | | | | | drawn | 12.07.12 | Schmidt | title: |
| | | | | | appd. | 12.07.12 | Koch | |
| | | | | | norm | | | |
| | | | | | d-old | 13K11D3A / 13K21D3A | | dwg no: |
| | | | | | | | | |
| | | | | | CONEC | | | DIN-A3 |
| | | | | | | | | sh: 1 |
| | | | | | part no: | | | see table |

THIS DRAWING MAY NOT BE COPIED OR REPRODUCED IN ANY WAY, AND MAY NOT BE PASSED ON TO A THIRD PARTY WITHOUT WRITTEN PERMISSION. OWNERSHIP AND COPYRIGHT OF CONEC GmbH DO NOT ALTER CAD DRAWING BY HAND

| rev. | description | date | name |
|-------|-------------|----------|------|
| 1 x b | A4380 | 12.07.12 | HS |
| a | Original | | |

| title: | |
|---------------------------------|--|
| HIGH POWER CONTACT MALE | |
| CRIMP VERSION 30A FOR AWG 10-12 | |
| D-SUB COMBINATION | |
| dwg no: | |
| 13K1A4010 | |
| part no: | |
| see table | |

X-ON Electronics

Largest Supplier of Electrical and Electronic Components

Click to view similar products for [D-Sub Contacts](#) category:

Click to view products by [CONEC](#) manufacturer:

Other Similar products are found below :

[D02-22-26S-10000](#) [8656352067LF](#) [131A15029X](#) [132A11019X](#) [132J22039X](#) [132A11029X](#) [132A11049X](#) [1757912-1](#) [188582-000](#)
[162A11889X](#) [1757913-1](#) [212558-1](#) [030-1955-000](#) [053744-0098](#) [053744-0099](#) [053745-0105](#) [053745-0111](#) [601098N003](#) [86303057NLF](#)
[131A11019X](#) [162A11819X](#) [40-9854MP](#) [1-208778-5](#) [FC120N2](#) [MC7526D/AA](#) [MC8122D/AA](#) [FC4010D-15](#) [FC4006D](#) [121A05329A](#)
[164C16669X](#) [86566620064LF](#) [C330-8997-101H](#) [131A13019X](#) [DLS3XS5AK40X](#) [09692825723](#) [030-1954-000](#) [L17DM53744207](#)
[L17RRD1M11400](#) [030-1952-000](#) [1655496](#) [030-1953-000](#) [030-1953-030](#) [132C11039X](#) [132J15019X](#) [132C15019X](#) [132C11019X](#)
[131A10029X](#) [8638PSC2006LF](#) [8656453067LF](#) [86566520064LF](#)