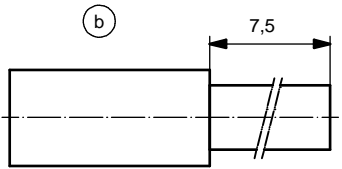


NOTES:

- 1. MATERIAL: COPPER ALLOY
- 2. PLATING:
 - ITEM 1: SEE TABLE
 - ITEM 2: GOLD FLASH over NICKEL
 - ITEM 3: NICKEL PLATED
- 3. CRIMPING: USE CRIMP TOOL 360X10409X
WITH TOOL INSERT 360X20029X
SELECTOR SETTINGS: 7 FOR AWG 8
6 FOR AWG 10
- (c) 4. CURRENT RATING: PER UL 1977 / CSA - C22.2 No.182.3 (E228329)
-50A
-50A only when used with cable AWG 8 and in combination with 2W2C connectors per following part number system:
Cat. No. 302W2, 302W2 followed by C, followed by P or S, followed by XX, followed by 99, followed by A1 through A8, C1 through C6, D1 through D6, E1 through E6, F1 through F6, G1 through G4, H1 through H4, K1 through K4, L1 through L4, N1 through N4 or P1 through P4, W1, W2 or S9, followed by 0X or 0A to 0W when used in conjunction with the following contacts and pins 131A, 132A, 131C, 132C, 131J and 132J followed by 11049X



STRIPPING DIMENSIONS

PLATING ITEM 1	PART-NO.
GOLD FLASH over NICKEL	131A11049X
min. 30µin HARD GOLD over min. 50µin NICKEL	131C11049X
min. 50µin HARD GOLD over min. 50µin NICKEL	131J11049X

Directive 2002/95/EC RoHS compliant

THIS DRAWING MAY NOT BE COPIED OR REPRODUCED IN ANY WAY, AND MAY NOT BE PASSED ON TO A THIRD PARTY WITHOUT WRITTEN PERMISSION. OWNERSHIP AND COPYRIGHT OF CONEC GmbH DO NOT ALTER CAD DRAWING BY HAND	finish:	SEE NOTES	tolerance	ISO 2768-m		dim. in mm	scale:	5:1	
	date		name		drawn	23.03.98	Barcinski	material:	SEE NOTES
	appd.		norm		appd.	23.03.98	Mickenbecker	title:	HIGH POWER CONTACT MALE CRIMP VERSION AWG 8-10 (c) D-SUB COMBINATION
	2 x c	Ä4283	17.04.12	K.H.	d-old			dwg no:	
	4 x b	Ä3854	19.01.11	K.H.					13K11D4A
a	Origin						part no:	SEE TABLE	



X-ON Electronics

Largest Supplier of Electrical and Electronic Components

Click to view similar products for [D-Sub Contacts](#) category:

Click to view products by [CONEC](#) manufacturer:

Other Similar products are found below :

[D02-22-26S-10000](#) [8656352067LF](#) [131A15029X](#) [132A11019X](#) [132J22039X](#) [132A11029X](#) [132A11049X](#) [1757912-1](#) [188582-000](#)
[162A11889X](#) [1757913-1](#) [212558-1](#) [030-1955-000](#) [053744-0098](#) [053744-0099](#) [053745-0105](#) [053745-0111](#) [601098N003](#) [86303057NLF](#)
[131A11019X](#) [162A11819X](#) [40-9854MP](#) [1-208778-5](#) [FC120N2](#) [MC7526D/AA](#) [MC8122D/AA](#) [FC4010D-15](#) [FC4006D](#) [121A05329A](#)
[164C16669X](#) [86566620064LF](#) [C330-8997-101H](#) [131A13019X](#) [DLS3XS5AK40X](#) [09692825723](#) [030-1954-000](#) [L17DM53744207](#)
[L17RRD1M11400](#) [030-1952-000](#) [1655496](#) [030-1953-000](#) [030-1953-030](#) [132C11039X](#) [132J15019X](#) [132C15019X](#) [131A10029X](#)
[8638PSC2006LF](#) [8656453067LF](#) [86566520064LF](#) [L17DM537441](#)