

COMBINATION D-SUB CONTACTS

High power contacts – Solder pin – angled



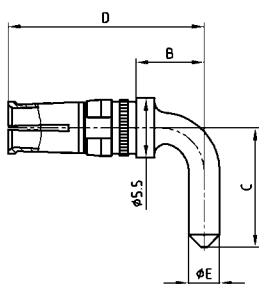
RoHS compliant – CSA listed, File No.: LR 115000-1-UL listed, File No.: E 228329

DESCRIPTION

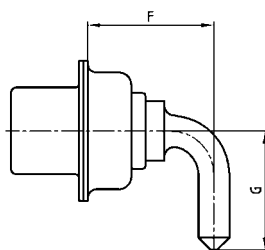
- Precision machined contacts
- Quality class 3: 50 mating cycles (gold plated)
- Quality class 1: 500 mating cycles (gold plated)
- Other quality classes on request

PRODUCT DRAWING

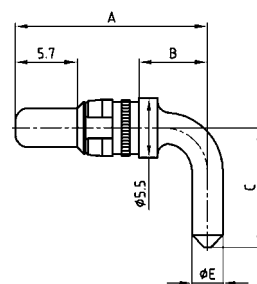
Socket contact



Installation dimension Shell size 1-4

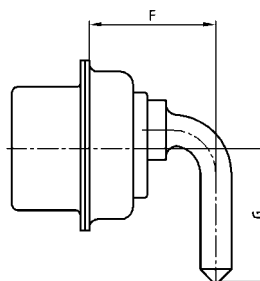


Plug contact

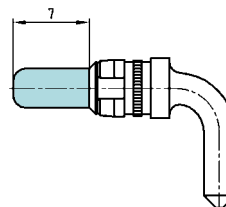


| Shell size | Current rating | Termination | A | B | C | D | ØE | F | G |
|------------|----------------|-------------|-------|-------|-------|-------|------|-------|-------|
| 1-4 | 15 A | 55/59 | 14.54 | 3.00 | 10.50 | 14.68 | 1.90 | 8.35 | 10.50 |
| 1-4 | 20 A | 56/73 | 17.84 | 6.30 | 11.00 | 17.98 | 2.85 | 11.65 | 11.00 |
| 1-4 | 30 A | 57/74 | 26.54 | 15.00 | 9.50 | 26.68 | 3.20 | 20.35 | 9.50 |
| 1-4 | 40 A | 58/75 | 17.84 | 6.30 | 11.00 | 17.98 | 3.75 | 11.65 | 11.00 |
| 5 | 20 A | 66/81 | 20.39 | 8.85 | 14.00 | 20.53 | 2.85 | 14.20 | 12.58 |
| 5 | 30 A | 67/82 | 20.39 | 8.85 | 14.00 | 20.53 | 3.20 | 14.20 | 12.58 |
| 5 | 30 A | 65/85 | 20.39 | 8.85 | 14.00 | 20.53 | 3.75 | 14.20 | 12.58 |
| 5 | 40 A | 60/77 | 26.54 | 15.00 | 13.50 | 26.68 | 3.20 | 20.35 | 12.08 |

Installation dimension Shell size 5



Premating contact



ORDER DATA

| SOCKET CONTACT | | | | |
|----------------|------------|---------------|--------------|---------------|
| Contact type | Shell size | Quality class | Termination* | Part Number |
| Socket | 1-4 | 1 | 55 | 132 C 13009 X |
| Socket | 1-4 | 3 | 59 | 132 A 13009 X |
| Socket | 1-4 | 1 | 56 | 132 C 13019 X |
| Socket | 1-4 | 3 | 73 | 132 A 13019 X |
| Socket | 1-4 | 1 | 57 | 132 C 13029 X |
| Socket | 1-4 | 3 | 74 | 132 A 13029 X |
| Socket | 1-4 | 1 | 58 | 132 C 13039 X |
| Socket | 1-4 | 3 | 75 | 132 A 13039 X |
| Socket | 5 | 1 | 66 | 132 C 13060 X |
| Socket | 5 | 3 | 81 | 132 A 13060 X |
| Socket | 5 | 1 | 67 | 132 C 13070 X |
| Socket | 5 | 3 | 82 | 132 A 13070 X |
| Socket | 5 | 1 | 65 | 132 C 13059 X |
| Socket | 5 | 3 | 85 | 132 A 13059 X |
| Socket | 5 | 1 | 60 | 132 C 13049 X |
| Socket | 5 | 3 | 77 | 132 A 13049 X |

| PLUG CONTACT | | | | |
|----------------|------------|---------------|--------------|---------------|
| Contact type | Shell size | Quality class | Termination* | Part Number |
| Plug | 1-4 | 1 | 55 | 131 C 13009 X |
| Plug | 1-4 | 3 | 59 | 131 A 13009 X |
| Plug | 1-4 | 1 | 56 | 131 C 13019 X |
| Plug | 1-4 | 3 | 73 | 131 A 13019 X |
| Plug | 1-4 | 1 | 57 | 131 C 13029 X |
| Plug | 1-4 | 3 | 74 | 131 A 13029 X |
| Plug | 1-4 | 1 | 58 | 131 C 13039 X |
| Plug | 1-4 | 3 | 75 | 131 A 13039 X |
| Plug | 5 | 1 | 66 | 131 C 13060 X |
| Plug | 5 | 3 | 81 | 131 A 13060 X |
| Plug | 5 | 1 | 67 | 131 C 13070 X |
| Plug | 5 | 3 | 82 | 131 A 13070 X |
| Plug | 5 | 1 | 65 | 131 C 13059 X |
| Plug | 5 | 3 | 85 | 131 A 13059 X |
| Plug | 5 | 1 | 60 | 131 C 13049 X |
| Plug | 5 | 3 | 77 | 131 A 13049 X |
| Plug premating | 1-4 | 1 | | 131 C 13109 X |
| Plug premating | 1-4 | 1 | | 131 C 13119 X |
| Plug premating | 1-4 | 1 | | 131 C 13129 X |
| Plug premating | 1-4 | 1 | | 131 C 13139 X |
| Plug premating | 5 | 1 | | 131 C 13160 X |
| Plug premating | 5 | 1 | | 131 C 13170 X |
| Plug premating | 5 | 1 | | 131 C 13159 X |
| Plug premating | 5 | 1 | | 131 C 13149 X |

*Code use with part number creator

X-ON Electronics

Largest Supplier of Electrical and Electronic Components

Click to view similar products for [D-Sub Contacts](#) category:

Click to view products by [CONEC](#) manufacturer:

Other Similar products are found below :

[D02-22-26S-10000](#) [8656352067LF](#) [131A15029X](#) [132A11019X](#) [132J22039X](#) [132A11029X](#) [132A11049X](#) [1757912-1](#) [188582-000](#)
[162A11889X](#) [1757913-1](#) [212558-1](#) [030-1955-000](#) [053744-0098](#) [053744-0099](#) [053745-0105](#) [053745-0111](#) [601098N003](#) [86303057NLF](#)
[131A11019X](#) [162A11819X](#) [40-9854MP](#) [1-208778-5](#) [FC120N2](#) [MC7526D/AA](#) [MC8122D/AA](#) [FC4010D-15](#) [FC4006D](#) [121A05329A](#)
[164C16669X](#) [86566620064LF](#) [C330-8997-101H](#) [131A13019X](#) [DLS3XS5AK40X](#) [09692825723](#) [030-1954-000](#) [L17DM53744207](#)
[L17RRD1M11400](#) [030-1952-000](#) [1655496](#) [030-1953-000](#) [030-1953-030](#) [132C11039X](#) [132J15019X](#) [132C15019X](#) [131A10029X](#)
[8638PSC2006LF](#) [8656453067LF](#) [86566520064LF](#) [L17DM537441](#)