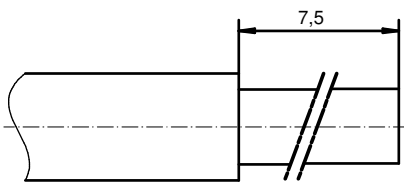


STRIPPING DIMENSION (b)



PLATING ITEM 1	PART-NO.
GOLD FLASH over NICKEL	132A10039X
30µm HARD GOLD over min. 50µm NICKEL	132C10039X

1	1	MATING SIDE	COPPER ALLOY	SEE TABLE
2	1	REAR SIDE	COPPER ALLOY	GOLD FLASH over NICKEL
3	1	RETAINING RING	COPPER ALLOY	NICKEL PLATED
pos	qty	description	material	plating

THIS DRAWING MAY NOT BE COPIED OR REPRODUCED IN ANY WAY, AND MAY NOT BE PASSED ON TO A THIRD PARTY WITHOUT WRITTEN PERMISSION. OWNERSHIP AND COPYRIGHT OF CONEC GmbH DO NOT ALTER CAD DRAWING BY HAND	partlist			tolerance	dim. in mm	scale:	5:1	
				date		name	material:	SEE NOTES
				drawn	31.03.16	Henneboel	title:	
				appd.	31.03.16	Schmidt	HIGH POWER CONTACT FEMALE	
				norm			SOLDER CUP 30A FOR AWG 10-12	
			d-old			D-SUB COMBINATION		
2 x b	Ä6066	31.03.2016	K.H.			dwg no:	DIN-A3	
a	Original					13K11E5A	sh: 1	
rev.	description	date	name			part no:	SEE TABLE	

RoHS compliant

X-ON Electronics

Largest Supplier of Electrical and Electronic Components

Click to view similar products for [D-Sub Contacts](#) category:

Click to view products by [CONEC](#) manufacturer:

Other Similar products are found below :

[D02-22-26S-10000](#) [8656352067LF](#) [131A15029X](#) [132A11019X](#) [132J22039X](#) [132A11029X](#) [132A11049X](#) [1757912-1](#) [188582-000](#)
[162A11889X](#) [1757913-1](#) [212558-1](#) [030-1955-000](#) [053744-0098](#) [053744-0099](#) [053745-0105](#) [053745-0111](#) [601098N003](#) [86303057NLF](#)
[131A11019X](#) [162A11819X](#) [40-9854MP](#) [1-208778-5](#) [FC120N2](#) [MC7526D/AA](#) [MC8122D/AA](#) [FC4010D-15](#) [FC4006D](#) [121A05329A](#)
[164C16669X](#) [86566620064LF](#) [C330-8997-101H](#) [131A13019X](#) [DLS3XS5AK40X](#) [09692825723](#) [030-1954-000](#) [L17DM53744207](#)
[L17RRD1M11400](#) [030-1952-000](#) [1655496](#) [030-1953-000](#) [030-1953-030](#) [132C11039X](#) [132J15019X](#) [132C15019X](#) [132C11019X](#)
[131A10029X](#) [8638PSC2006LF](#) [8656453067LF](#) [86566520064LF](#)