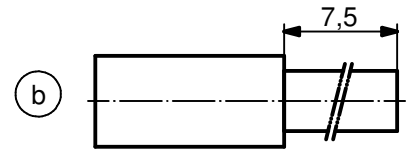


**NOTES:**

1. MATERIAL: COPPER ALLOY
2. PLATING:  
ITEM 1: 30µin HARD GOLD OVER min. 50µin NICKEL  
ITEM 2: GOLD FLASH over NICKEL  
ITEM 3: NICKEL PLATED
3. CRIMPING: USE CRIMP TOOL 360X10409X  
WITH TOOL INSERT 360X20029X  
SELECTOR SETTINGS: 3 FOR AWG 16  
2 FOR AWG 18  
2 FOR AWG 20



**STRIPPING DIMENSIONS**

Directive 2002/95/EC RoHS compliant

THIS DRAWING MAY NOT BE COPIED OR REPRODUCED IN ANY WAY, AND MAY NOT BE PASSED ON TO A THIRD PARTY WITHOUT WRITTEN PERMISSION. OWNERSHIP AND COPYRIGHT OF CONEC GmbH

DO NOT ALTER CAD DRAWING BY HAND

finish:				tolerance		scale:		
see notes				ISO 2768-m		5:1		
				dim. in mm		material:		
						see notes		
				date		title:		
				name		HIGH POWER CONTACT FEMALE		
				drawn 23.03.98		CRIMP VERSION 10A		
				appd. 23.03.98		D-SUB COMBINATION		
				norm		dwg no:		
				d-old		13K1IE7A		
3 x b	Ä3854	19.01.2011	K.H.					DIN-A4
a	Origin							sh: 1
rev.	description	date	name					part no:



## X-ON Electronics

Largest Supplier of Electrical and Electronic Components

*Click to view similar products for [D-Sub Contacts](#) category:*

*Click to view products by [CONEC](#) manufacturer:*

Other Similar products are found below :

[D02-22-26S-10000](#) [8656352067LF](#) [131A15029X](#) [132A11019X](#) [132J22039X](#) [132A11029X](#) [132A11049X](#) [1757912-1](#) [188582-000](#)  
[162A11889X](#) [1757913-1](#) [212558-1](#) [030-1955-000](#) [053744-0098](#) [053744-0099](#) [053745-0105](#) [053745-0111](#) [601098N003](#) [86303057NLF](#)  
[131A11019X](#) [162A11819X](#) [40-9854MP](#) [1-208778-5](#) [FC120N2](#) [MC7526D/AA](#) [MC8122D/AA](#) [FC4010D-15](#) [FC4006D](#) [121A05329A](#)  
[164C16669X](#) [86566620064LF](#) [C330-8997-101H](#) [131A13019X](#) [DLS3XS5AK40X](#) [09692825723](#) [030-1954-000](#) [L17DM53744207](#)  
[L17RRD1M11400](#) [030-1952-000](#) [1655496](#) [030-1953-000](#) [030-1953-030](#) [132C11039X](#) [132J15019X](#) [132C15019X](#) [132C11019X](#)  
[131A10029X](#) [8638PSC2006LF](#) [8656453067LF](#) [86566520064LF](#)