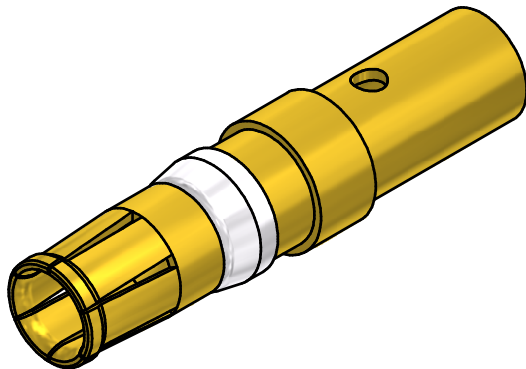
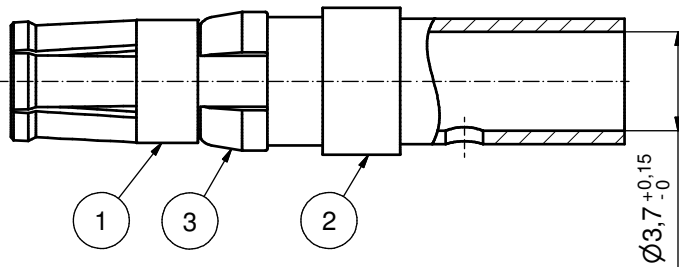
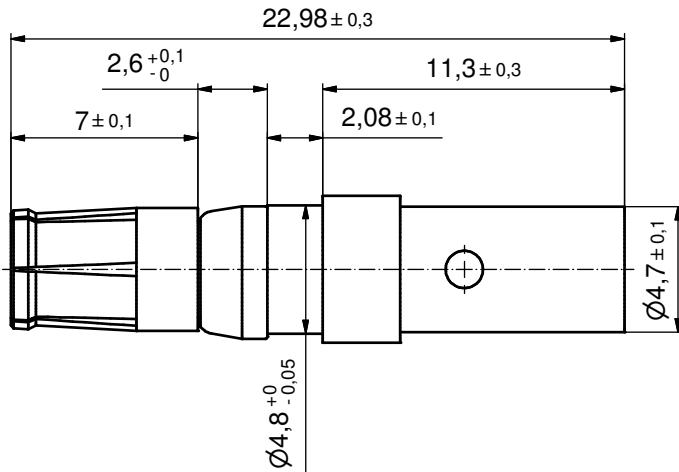


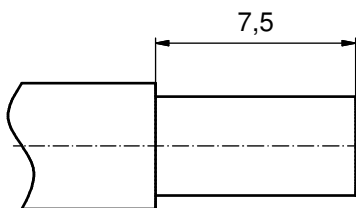
(c) (d)



(d) (b) NOTES:  
 CRIMPING:  
 USE CRIMP TOOL: 360X10409X  
 WITH TOOL INSERT: 360X20029X  
 SELECTOR SETTINGS: 7 FOR AWG 10  
 6 FOR AWG 12

plating	part no.
GOLD FLASH over NICKEL	132A11039X
30µin HARD GOLD over min. 50µin NICKEL	132C11039X
50µin HARD GOLD over min. 50µin NICKEL	132J11039X

(b) STRIPPING DIMENSIONS



RoHS compliant

pos	qty	description	material	plating
3	1	RETAINING RING	COPPER ALLOY	NICKEL PLATED
2	1	REAR SIDE	COPPER ALLOY	GOLD FLASH over NICKEL
1	1	MATING SIDE	COPPER ALLOY	see table

partlist				tolerance	dim. in mm	scale:	5:1
THIS DRAWING MAY NOT BE COPIED OR REPRODUCED IN ANY WAY, AND MAY NOT BE PASSED ON TO A THIRD PARTY WITHOUT WRITTEN PERMISSION. OWNERSHIP AND COPYRIGHT OF CONEC GmbH				date	name	material: see partlist	
DO NOT ALTER CAD DRAWING BY HAND				drawn	23.03.98	title:	
				appd.	23.03.98	HIGH POWER CONTACT FEMALE	
4 x d	Ä5877	09.11.2015	K.H.	norm		CRIMP VERSION 30A	
1 x c	Ä2197	01.04.2005	Lehm.	d-old	13K2IE9A	D-SUB COMBINATION	
2 x b	Ä2177	02.03.2005	Lehm.			dwg no:	
a	Original					13K1IE9A	
rev.	description	date	name	CONEC®		part no: see table	
						DIN-A3	
						sh: 1	

## X-ON Electronics

Largest Supplier of Electrical and Electronic Components

*Click to view similar products for [D-Sub Contacts](#) category:*

*Click to view products by [CONEC](#) manufacturer:*

Other Similar products are found below :

[D02-22-26S-10000](#) [8656352067LF](#) [131A15029X](#) [132A11019X](#) [132J22039X](#) [132A11029X](#) [132A11049X](#) [1757912-1](#) [188582-000](#)  
[162A11889X](#) [1757913-1](#) [212558-1](#) [030-1955-000](#) [053744-0098](#) [053744-0099](#) [053745-0105](#) [053745-0111](#) [601098N003](#) [86303057NLF](#)  
[131A11019X](#) [162A11819X](#) [40-9854MP](#) [1-208778-5](#) [FC120N2](#) [MC7526D/AA](#) [MC8122D/AA](#) [FC4010D-15](#) [FC4006D](#) [121A05329A](#)  
[164C16669X](#) [86566620064LF](#) [C330-8997-101H](#) [131A13019X](#) [DLS3XS5AK40X](#) [09692825723](#) [030-1954-000](#) [L17DM53744207](#)  
[L17RRD1M11400](#) [030-1952-000](#) [1655496](#) [030-1953-000](#) [030-1953-030](#) [132C11039X](#) [132J15019X](#) [132C15019X](#) [131A10029X](#)  
[8638PSC2006LF](#) [8656453067LF](#) [86566520064LF](#) [L17DM537441](#)