

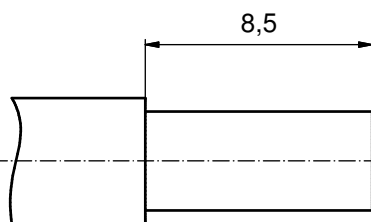
NOTES:

CRIMPING:  
 USE CRIMP TOOL: 360X10409X  
 WITH TOOL INSERT: 360X20029X  
 SELECTOR SETTINGS: 5 FOR AWG 12  
 4 FOR AWG 14

plating	part no.
GOLD FLASH over NICKEL	<b>132A11029X</b>
30µin HARD GOLD over min. 50µin NICKEL	<b>132C11029X</b>
50µin HARD GOLD over min. 50µin NICKEL	<b>132J11029X</b>

RoHS compliant

STRIPPING DIMENSIONS



pos	qty	description	material	plating
3	1	RETAINING RING	COPPER ALLOY	NICKEL PLATED
2	1	REAR SIDE	COPPER ALLOY	GOLD FLASH over NICKEL
1	1	MATING SIDE	COPPER ALLOY	see table

partlist		tolerance	dim. in mm	scale:	5:1		
THIS DRAWING MAY NOT BE COPIED OR REPRODUCED IN ANY WAY, AND MAY NOT BE PASSED ON TO A THIRD PARTY WITHOUT WRITTEN PERMISSION. OWNERSHIP AND COPYRIGHT OF CONEC GmbH		date	name	material:	see notes		
DO NOT ALTER CAD DRAWING BY HAND		drawn	26.07.06	Lehmenkühler	title:		
		appd.	26.07.06	Kühle	<b>HIGH POWER CONTACT FEMALE</b>		
		norm			CRIMP VERSION 20A		
4 x c	Ä5997	22.02.16	K.H.	d-old	13K11E8A/13K1A188A	dwg no:	DIN-A3
2 x b	Ä3554	19.01.11	K.H.			<b>13K1A1836</b>	sh: 1
a	Origin					part no:	see table
rev.	description	date	name				



## X-ON Electronics

Largest Supplier of Electrical and Electronic Components

*Click to view similar products for [D-Sub Contacts](#) category:*

*Click to view products by [CONEC](#) manufacturer:*

Other Similar products are found below :

[D02-22-26S-10000](#) [8656352067LF](#) [131A15029X](#) [132A11019X](#) [132J22039X](#) [132A11029X](#) [132A11049X](#) [1757912-1](#) [188582-000](#)  
[162A11889X](#) [1757913-1](#) [212558-1](#) [030-1955-000](#) [053744-0098](#) [053744-0099](#) [053745-0105](#) [053745-0111](#) [601098N003](#) [86303057NLF](#)  
[131A11019X](#) [162A11819X](#) [40-9854MP](#) [1-208778-5](#) [FC120N2](#) [MC7526D/AA](#) [MC8122D/AA](#) [FC4010D-15](#) [FC4006D](#) [121A05329A](#)  
[164C16669X](#) [86566620064LF](#) [C330-8997-101H](#) [131A13019X](#) [DLS3XS5AK40X](#) [09692825723](#) [030-1954-000](#) [L17DM53744207](#)  
[L17RRD1M11400](#) [030-1952-000](#) [1655496](#) [030-1953-000](#) [030-1953-030](#) [132C11039X](#) [132J15019X](#) [132C15019X](#) [131A10029X](#)  
[8638PSC2006LF](#) [8656453067LF](#) [86566520064LF](#) [L17DM537441](#)