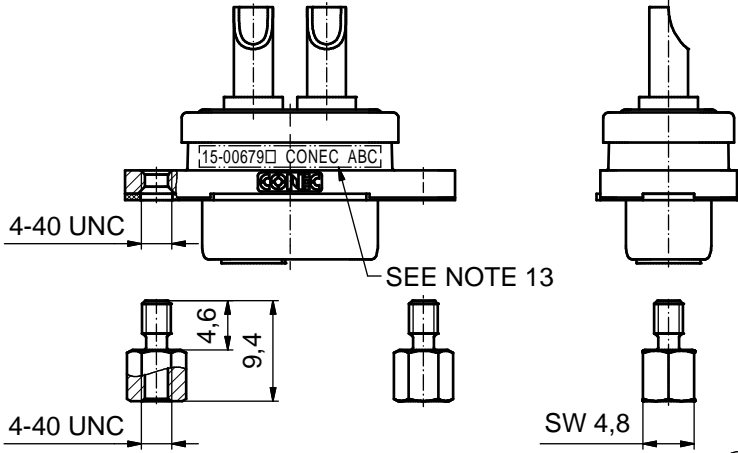
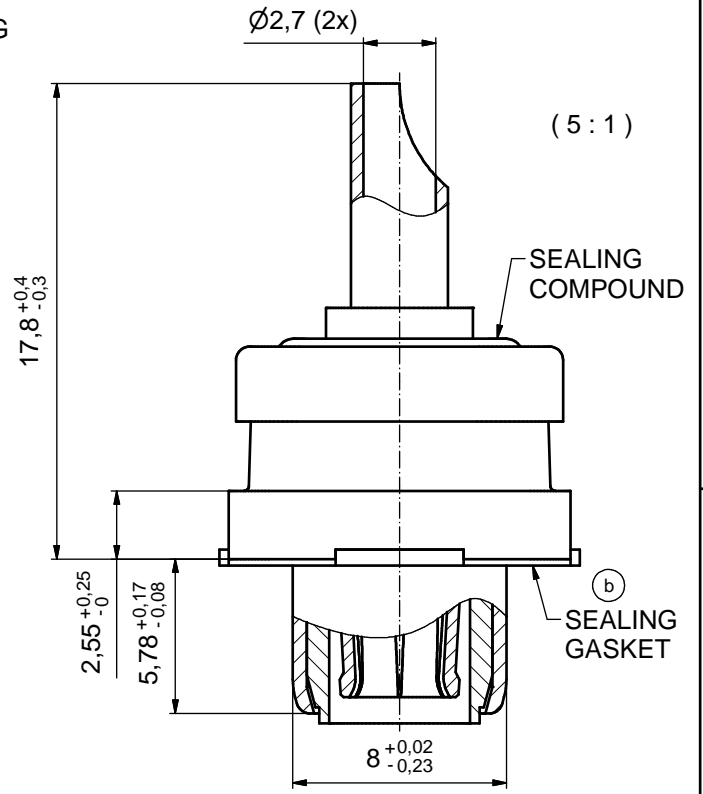
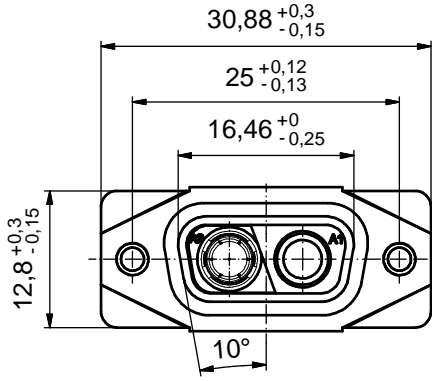
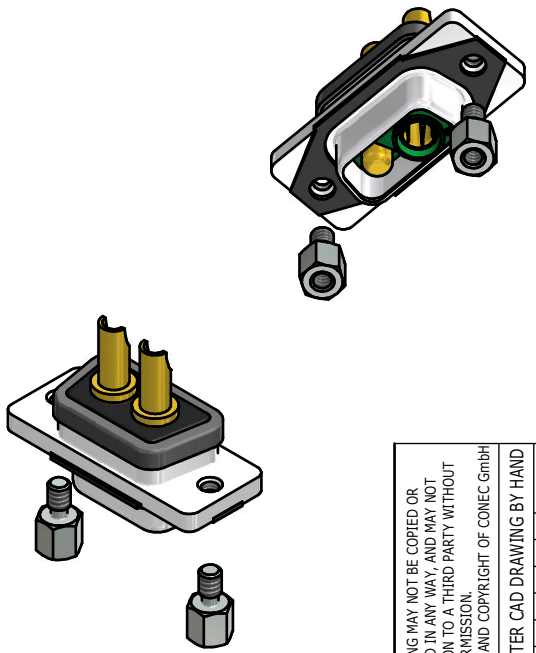


CUSTOMER IS RESPONSIBLE FOR SEALING THE MOUNTING HOLES. THE OTHER PARTS OF THE CONNECTOR ARE CONSIDERED IP67, BUT THE OVERALL SEALING EFFECTIVENESS IS DEPENDENT ON THE CUSTOMER SEALING THE MOUNTING HOLES / HARDWARE.



NOTES:

1. RECOMMENDED SOLDER INSTRUCTION SEE SHEET 2
2. IP RATING: IP 67
3. SEALED TO WITHSTAND PRESSURE UP TO 1,45 PSI FOR 30 MINUTES AFTER SOLDERING
4. METAL SHELL: ZINC DIE CAST; min. 50µm NICKEL PLATING over COPPER
5. INSULATOR: PBT GF UL 94 V-0
6. EXTENSION: HIGH TEMPERATURE PLASTIC UL 94-V0
7. SEALING GASKET: SILICONE
8. SEALING COMPOUND: EPOXY
9. HIGH POWER CONTACTS 20A: COPPER ALLOY PLATING, MATING SIDE (SEE PART NO.):
 PLEASE ADD 1 for 30µm HARD GOLD over min. 50µm NICKEL
 PLEASE ADD 3 for GOLD FLASH over NICKEL
 PLATING, TERMINATION SIDE: GOLD FLASH over NICKEL
 SOLDER CUP ACCEPTS CABLE AWG 12-14
 MALE CONTACT ON POS. A1; FEMALE CONTACT ON POS. A2
10. HEXLOCKING SCREWS: STAINLESS STEEL
11. RECOMMENDED PANEL CUT-OUT ON SHEET 2
12. RECOMMENDED TORQUE FOR MOUNTING SCREW
 35Ncm (3.1 in.LB) / max. 67Ncm (6 in.LB)
13. CONNECTOR IS PART MARKED: 15-00679 CONEC ABC (see note 9)



RoHS compliant

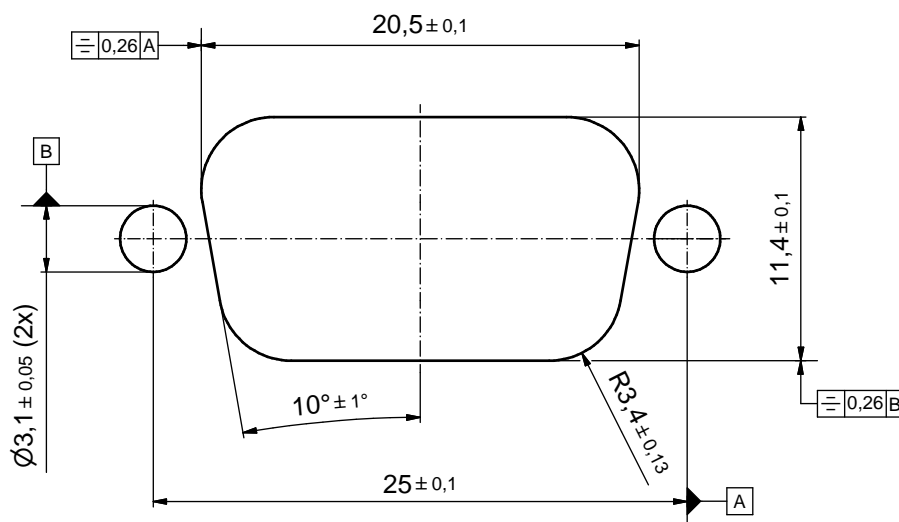
tolerance		dim. in mm	scale: 2:1 (5:1)	
			material: SEE NOTES	
date		name		title: D-SUB COMBINATION FEMALE 2W2CS SOLDER CUP with open 4-40 UNC thread
drawn 01.10.2015		Lehmenkühler		
appd. 07.01.2016		Fischer		
norm		d-old		dwg no:
2 x b	Ä6417	26.06.2017	Unkrüer	15K1A1711
a	Original			DIN-A3 sh: 1
rev.	description	date	name	part no: 15-00679 (see note 9)



Solder Instruction

1. Cable should be prepared for soldering. The cable/wires must be pretinned.
2. Insert cable/wire into solder cup.
3. Operate the soldering iron at 350°C, 100 Watt max. and use a pencil tip.
4. Apply some solder to the solder tip of the soldering iron.
5. Put tip to wire in solder cup.
6. After 1 second bring in solder.
7. Heat for 5 seconds longer. Do not heat contact more than 6 seconds in total.
8. Remove soldering iron.
9. Wait until solder gets rigid again.
10. Do not solder adjacent contacts consecutively, alternate position within the connector to minimize heat build up.

RECOMMENDED PANEL CUT-OUT



THIS DRAWING MAY NOT BE COPIED OR REPRODUCED IN ANY WAY, AND MAY NOT BE PASSED ON TO A THIRD PARTY WITHOUT WRITTEN PERMISSION. OWNERSHIP AND COPYRIGHT OF CONEC GmbH DO NOT ALTER CAD DRAWING BY HAND				tolerance		scale: 4:1	
					dim. in mm	material: SEE SHEET 1	
				date	name	title:	
				drawn 01.10.2015	Lehmenkühler	RECOMMENDED PANEL CUT-OUT	
				appd. 07.01.2016	Fischer	D-SUB COMBINATION FEMALE 2W2CS SOLDER CUP	
				norm		with open 4-40 UNC thread	
				d-old		dwg no:	
a	Original		CONEC [®]			15K1A1711	DIN-A3
rev.	description	date				name	part no: SEE SHEET 1

X-ON Electronics

Largest Supplier of Electrical and Electronic Components

Click to view similar products for [D-Sub Mixed Contact Connectors](#) category:

Click to view products by [CONEC](#) manufacturer:

Other Similar products are found below :

[790-025SF-5P5NMN](#) [790-025SJ-7P7NML](#) [DAM-7W2PC](#) [L717TWB5W5P3R](#) [L717TWB5W5PRM84](#) [L717TWP3W3P](#)
[3003W3PXX56N40X](#) [3005W5PXX99E40X](#) [3005W5SXX99A30X](#) [3005W5SXX99E40X](#) [3013W6SCM99A10X](#) [3036W4PCM41A10X](#)
[3036W4SCM99A10X](#) [FCE17-E2W2SS-2N0](#) [212522-7](#) [PII-468-1](#) [3003W3PXX43A10X](#) [3003W3SXX56N40X](#) [3005W5PXX88N40X](#)
[3008W8SXX57A30X](#) [3009W4PCT57P20X](#) [3017W2SAR69C40X](#) [3024W7SCM99A10X](#) [302W2CPXX56N40X](#) [321WA4PXK99A60X](#)
[321WA4SCT56N40X](#) [3F3SSC22S41A30X](#) [L717TWA7W2PP2SY3R](#) [DBM-17W2S-1A8N-A190-A197-1](#) [421WA4PCR50E20X](#)
[09693009176](#) [09693909015](#) [6017W2PCM41B30X](#) [790-061SH-36W2NMNA](#) [790-044SE-7P3MNPB](#) [790-043PE-11P2MPA](#) [790-043PB-](#)
[2P2MPB](#) [790-029SB-2P2MEPA](#) [790-028PK-9P9MPA](#) [790-028PH-54P2MGA](#) [790-028PH-36P2MNA](#) [790-028PB-2P2MPA](#) [790-027SH-](#)
[5W5MTEP](#) [790-026PH-54P2ZNUG](#) [790-026PH-54P2MP](#) [790-026PH-36P2ZNUG](#) [790-026PH-36P2MG](#) [790-026PD-3P3MP](#) [790-025SJ-](#)
[7P7EMS](#) [790-025SH-36W2NMT](#)