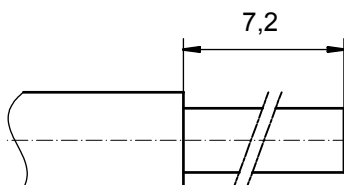


STRIPPING DIMENSIONS



Directive 2002/95/EC
„RoHS“
Compliant

NOTES:

CRIMPING:
USE CRIMP TOOL: 360X10409X
WITH TOOL INSERT: 36-000060
SELECTOR SETTINGS: 7 FOR AWG 10
6 FOR AWG 12

3	1	REAR SIDE	COPPER ALLOY	min. 8µin HARD GOLD over min. 50µin NICKEL
2	1	RETAINING RING	COPPER ALLOY	NICKEL PLATED
1	1	MATING SIDE	COPPER ALLOY	min. 30µin HARD GOLD over min. 50µin NICKEL
item	quantity	part description	material	plating

APPROVAL # FREIGABE # DEBLOCAGE # AUTORIZACION # APPROVAL	
CUSTOMER APPROVAL DATE:	
NAME:	TITLE:
COMPANY NAME:	
APPROVAL # FREIGABE # DEBLOCAGE # AUTORIZACION # APPROVAL	

THIS DRAWING MAY NOT BE COPIED OR REPRODUCED IN ANY WAY, AND MAY NOT BE PASSED ON TO A THIRD PARTY WITHOUT WRITTEN PERMISSION. OWNERSHIP AND COPYRIGHT OF CONEC GmbH DO NOT ALTER CAD DRAWING BY HAND				tolerance ISO 2768-m	dim. in mm	scale: 8:1 material: see partlist		
date	name	HIGH POWER CONTACT FEMALE CRIMP VERSION 30A D-SUB COMBINATION		drawn	03.01.08	Schmidt	dwg no: Inventor 10 13K1A2379 part no: 13-000311	DIN-A3 sh: 1
appd.	03.01.08			Koch				
norm								
d-old								
a	Origin			rev.	description	date	name	

X-ON Electronics

Largest Supplier of Electrical and Electronic Components

Click to view similar products for [Micro TCA Connectors](#) category:

Click to view products by [CONEC](#) manufacturer:

Other Similar products are found below :

[MEB97318-219](#) [13-000151](#) [MDM-9PSM2-A174](#) [MEB2-64SL83-A159](#) [MDM-25SSK](#) [MDM-15SBSM7-A174](#) [MDM-21PCBRP-A174](#)
[MDM-21PCBRM7-A174](#) [MDM-25PH074M5](#) [MDM-9PL93M7-A174](#) [MEB1-128P](#) [13-000161](#) [13-000141](#) [16111705207000](#) [10058831-110LF](#) [10058831-111LF](#) [10058835-1001LF](#) [10070163-01LF](#) [10084423-103LF](#) [10084423-102LF](#) [10084423-101LF](#) [MDM-25PSB-A174](#)
[MDM-9PL1B](#) [MEB2-64SBR](#) [MDM-21PCBR-A174](#) [13-000201](#) [16041705104000](#) [16041705106000](#) [16310341201000](#) [16320301101000](#)
[16320341101000](#) [16330961201000](#) [16340961101000](#) [MDM-21PSB](#) [MDM-21SSB-A174](#) [75594-0000](#) [MTCA-085-02-S-DV-SMT-K-TR](#)
[UCC8-010-1-H-S-1-A](#) [UEC5-019-1-H-D-RA-1-A](#) [UEC5-019-1-H-D-RA-2-A](#) [UEC5-019-2-H-D-RA-1](#) [1-1469820-1](#) [1766501-2](#) [1888803-1](#)
[4-1469372-2](#) [5-1469373-5](#) [6-1469372-8](#) [6-1469373-8](#)