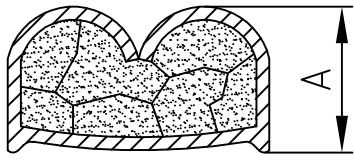
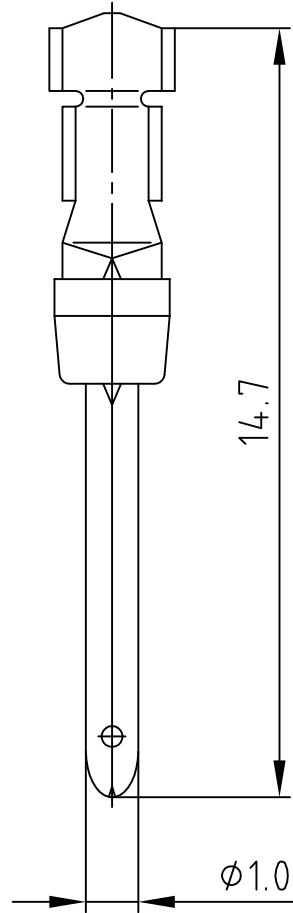


used for: D-SUB

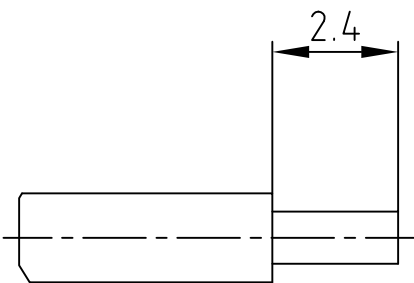


(b)

| Wire size AWG | Crimp height A |
|------------------|-------------------|
| 24 | 0,68 - 0,86 |
| 22 | 0,68 - 0,86 |
| 20 | 0,68 - 0,86 |



STRIPPING DIMENSIONS (b)



(b) NOTES:

- Material Stamped Contacts: Phosphor Bronze
- Finish: Gold Flash over Nickel in the Contact Area
- Temperature Range: -55°C to +125°C
- Rated Current: 7.5A
- Test Voltage: 1000V eff. at 50Hz
- Contact Resistance: <= 10mOhm
- Insulation Resistance: >= 5000MOhm
- Crimping: Use Crimp Tool 360X10079X

Directive 2002/95/EC RoHS compliant

THIS DRAWING MAY NOT BE COPIED OR REPRODUCED IN ANY WAY, AND MAY NOT BE PASSED ON TO A THIRD PARTY WITHOUT WRITTEN PERMISSION.
 OWNERSHIP AND COPYRIGHT OF CONEC GmbH
 DO NOT ALTER CAD DRAWING BY HAND

| | | | | tolerance | | | | scale: | 5:1 | | | |
|-------|-------------|------------|---------|---------------|--------|-----------|--|-----------|------------|-------|------------------------------------|--------------|
| | | | | 2002 | date | name | | material: | | | SEE NOTES | |
| | | | | drawn | 11.01. | Parei | | title: | | | PLUG CONTACT CRIMP AWG 24-20 | |
| | | | | appd. | 11.01. | Resonnek | | dwg no: | | | | AutoCAD 2006 |
| | | | | norm | | | | | | DIN-A | | |
| | | | | d-old | | | | | | 4 | | |
| 3 x b | Ä 4116 | 27.09.2011 | Lehmen. | CONEC® | | part no: | | | 161A13399X | | | |
| a | Original | | | | | 16K2A430A | | | sh: 1/1 | | | |
| rev. | description | date | name | | | | | | | | | |

4

3

2

1

F

F

E

E

D

D

C

C

B

B

A

A

X-ON Electronics

Largest Supplier of Electrical and Electronic Components

Click to view similar products for [D-Sub Contacts](#) category:

Click to view products by [CONEC](#) manufacturer:

Other Similar products are found below :

[D02-22-26S-10000](#) [8656352067LF](#) [131A15029X](#) [132A11019X](#) [132J22039X](#) [132A11029X](#) [132A11049X](#) [1757912-1](#) [188582-000](#)
[162A11889X](#) [1757913-1](#) [212558-1](#) [030-1955-000](#) [053744-0098](#) [053744-0099](#) [053745-0105](#) [053745-0111](#) [601098N003](#) [86303057NLF](#)
[131A11019X](#) [162A11819X](#) [40-9854MP](#) [1-208778-5](#) [FC120N2](#) [MC7526D/AA](#) [MC8122D/AA](#) [FC4010D-15](#) [FC4006D](#) [121A05329A](#)
[164C16669X](#) [86566620064LF](#) [C330-8997-101H](#) [131A13019X](#) [DLS3XS5AK40X](#) [09692825723](#) [030-1954-000](#) [L17DM53744207](#)
[L17RRD1M11400](#) [030-1952-000](#) [1655496](#) [030-1953-000](#) [030-1953-030](#) [132C11039X](#) [132J15019X](#) [132C15019X](#) [132C11019X](#)
[131A10029X](#) [8638PSC2006LF](#) [8656453067LF](#) [86566520064LF](#)