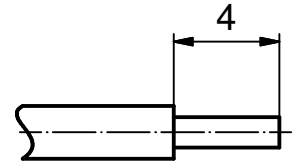


STRIPPING DIMENSION (b)



Part-no. as per finish			
(b) GOLD FLASH over NICKEL (c)	min. 20µm HARD GOLD over min. 50µm NICKEL	min. 30µm HARD GOLD over min. 50µm NICKEL	min. 50µm HARD GOLD over min. 50µm NICKEL
161A18299X	161B18299X	161C18299X	161J18299X

- (b) NOTES:
1. Material: Copper alloy
 2. Finish: See table
 3. Temperature range: -55 °C to +125 °C
 4. Rated current: 7.5 A maximum
 5. Contact resistance: ≤ 10 mOhm
 6. Crimping: Use crimp tool 360X10329X
With tool insert 360X20069X
Selector settings: 7 for AWG 20
6 for AWG 22
5 for AWG 24

Directive 2002/95/EC RoHS compliant

THIS DRAWING MAY NOT BE COPIED OR REPRODUCED IN ANY WAY, AND MAY NOT BE PASSED ON TO A THIRD PARTY WITHOUT WRITTEN PERMISSION. OWNERSHIP AND COPYRIGHT OF CONEC GmbH	DO NOT ALTER CAD DRAWING BY HAND				tolerance DIN ISO 2768-m	dim. in mm	scale: 5:1	material: SEE NOTES	
					date	name	title: CRIMP PLUG CONTACT		
					drawn	08.02.06	Lehmenkühler	screw machined version	
					appd.	08.02.06	Mickenbecker	accepts cable AWG 24-20	
	2 x d	Ä5346	17.09.2014	K.H.	norm			dwg no: Inventor 10	DIN-A4
	1 x c	Ä 4116	26.09.11	Lehm.	d-old			16K1A1743	sh: 1
	4 x b	Ä 3698	25.08.10	Lehm.				part no: SEE TABLE	
a	Original								
rev.	description	date	name						

X-ON Electronics

Largest Supplier of Electrical and Electronic Components

Click to view similar products for [D-Sub Contacts](#) category:

Click to view products by [CONEC](#) manufacturer:

Other Similar products are found below :

[D02-22-26S-10000](#) [8656352067LF](#) [131A15029X](#) [132A11019X](#) [132J22039X](#) [132A11029X](#) [132A11049X](#) [1757912-1](#) [188582-000](#)
[162A11889X](#) [1757913-1](#) [212558-1](#) [030-1955-000](#) [053744-0098](#) [053744-0099](#) [053745-0105](#) [053745-0111](#) [601098N003](#) [86303057NLF](#)
[131A11019X](#) [162A11819X](#) [40-9854MP](#) [1-208778-5](#) [FC120N2](#) [MC7526D/AA](#) [MC8122D/AA](#) [FC4010D-15](#) [FC4006D](#) [121A05329A](#)
[164C16669X](#) [86566620064LF](#) [C330-8997-101H](#) [131A13019X](#) [DLS3XS5AK40X](#) [09692825723](#) [030-1954-000](#) [L17DM53744207](#)
[L17RRD1M11400](#) [030-1952-000](#) [1655496](#) [030-1953-000](#) [030-1953-030](#) [132C11039X](#) [132J15019X](#) [132C15019X](#) [132C11019X](#)
[131A10029X](#) [8638PSC2006LF](#) [8656453067LF](#) [86566520064LF](#)