

D-SUB STANDARD

Crimp body (without contacts) – For wire size AWG 24...20 and AWG 28...24

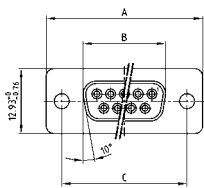


RoHS compliant – CSA listed, File No.: LR 115000-1 – UL listed, File No.: E202784

DESCRIPTION

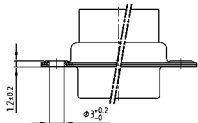
- For machined and stamped contacts, AWG 24...20 and AWG 28...24
- Mounting styles:
 - with through-hole, Ø .118" / 3 mm
 - with 4-40 UNC or M3 threaded insert
- Shell: Steel tin plated (brass tin plated or stainless steel available on request)

SOCKET CONNECTOR



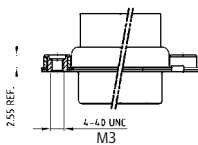
No. of pos.	A -0.76	B -0.25	C
09	31.19	16.46	25.00 +0.12
15	39.52	24.79	33.30 +0.15 -0.10
25	53.42	38.50	47.04 ±0.13
37	69.70	54.96	63.50 ±0.13
50	67.31	52.55	61.10 +0.14 -0.11

Mounting style: Through-hole

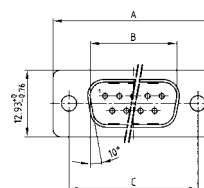


50 pos. = Dim. in (_)

Mounting style: Threaded insert

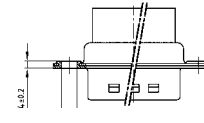


PLUG CONNECTOR



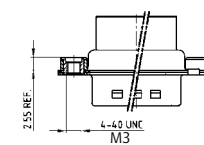
No. of pos.	A -0.76	B -0.25	C	D -0.3
09	31.19	16.79	25.00 +0.12	6.12
15	39.52	25.12	33.30 +0.15 -0.10	6.12
25	53.42	38.84	47.04 ±0.13	5.99
37	69.70	55.30	63.50 ±0.13	5.99
50	67.31	52.68	61.10 +0.14 -0.11	5.99

Mounting style: Through-hole



50 pos. = Dim. in (_)

Mounting style: Threaded insert



ORDER DATA

SOCKET CONNECTOR		
No. of pos.	Mounting style	Part Number
09	Through-hole	164X 11769 X
15	Through-hole	164X 11779 X
25	Through-hole	164X 11789 X
37	Through-hole	164X 11799 X
50	Through-hole	164X 11809 X
09	4-40 UNC Threaded insert	DSS 1XSXXG04 X
15	4-40 UNC Threaded insert	DSS 2XSXXG04 X
25	4-40 UNC Threaded insert	DSS 3XSXXG04 X
37	4-40 UNC Threaded insert	DSS 4XSXXG04 X
50	4-40 UNC Threaded insert	DSS 5XSXXG04 X
09	M3 Threaded insert	DSS 1XSXXG03 X
15	M3 Threaded insert	DSS 2XSXXG03 X
25	M3 Threaded insert	DSS 3XSXXG03 X
37	M3 Threaded insert	DSS 4XSXXG03 X
50	M3 Threaded insert	DSS 5XSXXG03 X

PLUG CONNECTOR		
No. of pos.	Mounting style	Part Number
09	Through-hole	163X 10019 X
15	Through-hole	163X 10029 X
25	Through-hole	163X 10039 X
37	Through-hole	163X 10049 X
50	Through-hole	163X 10059 X
09	4-40 UNC Threaded insert	DSS 1XPXXG04 X
15	4-40 UNC Threaded insert	DSS 2XPXXG04 X
25	4-40 UNC Threaded insert	DSS 3XPXXG04 X
37	4-40 UNC Threaded insert	DSS 4XPXXG04 X
50	4-40 UNC Threaded insert	DSS 5XPXXG04 X
09	M3 Threaded insert	DSS 1XPXXG03 X
15	M3 Threaded insert	DSS 2XPXXG03 X
25	M3 Threaded insert	DSS 3XPXXG03 X
37	M3 Threaded insert	DSS 4XPXXG03 X
50	M3 Threaded insert	DSS 5XPXXG03 X

X-ON Electronics

Largest Supplier of Electrical and Electronic Components

Click to view similar products for [D-Sub Contacts](#) category:

Click to view products by [CONEC](#) manufacturer:

Other Similar products are found below :

[D02-22-26S-10000](#) [8656352067LF](#) [131A15029X](#) [132A11019X](#) [132J22039X](#) [132A11029X](#) [132A11049X](#) [1757912-1](#) [188582-000](#)
[162A11889X](#) [1757913-1](#) [212558-1](#) [030-1955-000](#) [053744-0098](#) [053744-0099](#) [053745-0105](#) [053745-0111](#) [601098N003](#) [86303057NLF](#)
[131A11019X](#) [162A11819X](#) [40-9854MP](#) [1-208778-5](#) [FC120N2](#) [MC7526D/AA](#) [MC8122D/AA](#) [FC4010D-15](#) [FC4006D](#) [121A05329A](#)
[164C16669X](#) [86566620064LF](#) [C330-8997-101H](#) [131A13019X](#) [DLS3XS5AK40X](#) [09692825723](#) [030-1954-000](#) [L17DM53744207](#)
[L17RRD1M11400](#) [030-1952-000](#) [1655496](#) [030-1953-000](#) [030-1953-030](#) [132C11039X](#) [132J15019X](#) [132C15019X](#) [132C11019X](#)
[131A10029X](#) [8638PSC2006LF](#) [8656453067LF](#) [86566520064LF](#)