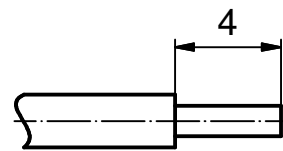


STRIPPING DIMENSION (c)



Part-no. as per finish			
(c) GOLD FLASH over NICKEL (d)	min. 20µin HARD GOLD over min. 50µin NICKEL	min. 30µin HARD GOLD over min. 50µin NICKEL	min. 50µin HARD GOLD over min. 50µin NICKEL
162A18719X	162B18719X	162C18719X	162J18719X

- (c) NOTES:
1. Material: Copper alloy
 2. Finish: See table
 3. Temperature range: -55 °C to +125 °C
 4. Rated current: 5 A maximum
 5. Contact resistance: <= 10 mOhm
 6. Crimping: Use crimp tool 360X10329X
With tool insert 360X20069X
Selector settings: 7 for AWG 24
6 for AWG 26
5 for AWG 28

Directive 2002/95/EC RoHS compliant

THIS DRAWING MAY NOT BE COPIED OR REPRODUCED IN ANY WAY, AND MAY NOT BE PASSED ON TO A THIRD PARTY WITHOUT WRITTEN PERMISSION. OWNERSHIP AND COPYRIGHT OF CONEC GmbH

DO NOT ALTER CAD DRAWING BY HAND				tolerance DIN ISO 2768-m		dim. in mm	
				date	name		
				drawn	14.02.03	Parei	
3 x e	Ä5346	17.09.2014	K.H.	appd.	14.02.03	Kühle	
1 x d	Ä 4116	26.09.11	Lehm.	norm			
4 x c	Ä 3698	25.08.10	Lehm.	d-old			
1 x b	Ä 2127	02.12.04	Lehm.				
a	Original						
rev.	description	date	name				

scale:	5:1		
material:	SEE NOTES		
title:	CRIMP SOCKET CONTACT screw machined version accepts cable AWG 28-24		
dwg no:	Inventor 10	DIN-A4	
	16K1A886	sh: 1	
part no:	SEE TABLE		

X-ON Electronics

Largest Supplier of Electrical and Electronic Components

Click to view similar products for [D-Sub Contacts](#) category:

Click to view products by [CONEC](#) manufacturer:

Other Similar products are found below :

[D02-22-26S-10000](#) [8656352067LF](#) [131A15029X](#) [132A11019X](#) [132J22039X](#) [132A11029X](#) [132A11049X](#) [1757912-1](#) [188582-000](#)
[162A11889X](#) [1757913-1](#) [212558-1](#) [030-1955-000](#) [053744-0098](#) [053744-0099](#) [053745-0105](#) [053745-0111](#) [601098N003](#) [86303057NLF](#)
[131A11019X](#) [162A11819X](#) [40-9854MP](#) [1-208778-5](#) [FC120N2](#) [MC7526D/AA](#) [MC8122D/AA](#) [FC4010D-15](#) [FC4006D](#) [121A05329A](#)
[164C16669X](#) [86566620064LF](#) [C330-8997-101H](#) [131A13019X](#) [DLS3XS5AK40X](#) [09692825723](#) [030-1954-000](#) [L17DM53744207](#)
[L17RRD1M11400](#) [030-1952-000](#) [1655496](#) [030-1953-000](#) [030-1953-030](#) [132C11039X](#) [132J15019X](#) [132C15019X](#) [132C11019X](#)
[131A10029X](#) [8638PSC2006LF](#) [8656453067LF](#) [86566520064LF](#)