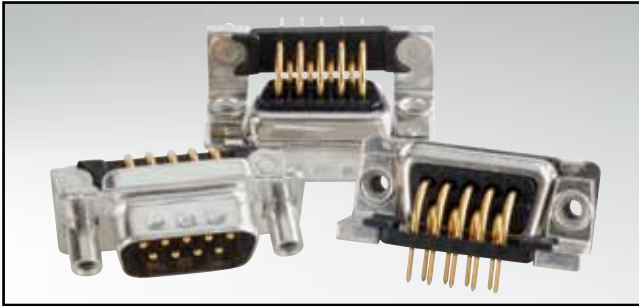


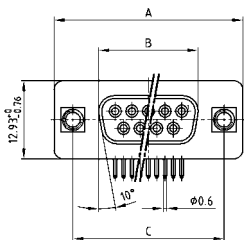
# D-SUB STANDARD

Solder pin – Angled – .318" / 7.19 mm – Precision machined contacts – Metal bracket



RoHS compliant – CSA listed, File No.: LR 115000-1 – UL listed, File No.: E202784

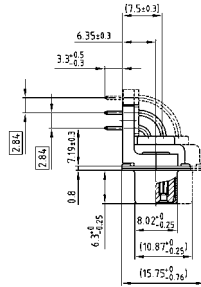
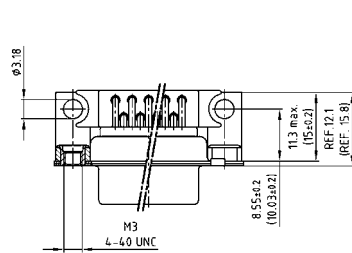
## SOCKET CONNECTOR



No. of pos.	A -0.76	B -0.25	C
09	31.19	16.46	25.00 +0.12
15	39.52	24.79	33.30 +0.15 -0.10
25	53.42	38.50	47.04 +0.13
37	69.70	54.96	63.50 +0.13
50	67.31	52.55	61.10 +0.14 -0.11

PCB layout: Kat1kGEA

Mounting style: Threaded insert

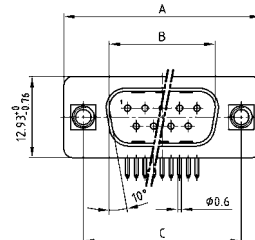


50 pos. = Dim. in ( \_ )

## DESCRIPTION

- Mounting styles:
  - with mounting bracket and 4-40 UNC or M3 threaded insert
  - with mounting bracket and 4-40 UNC or M3 front spacer
  - with mounting bracket, PCB clip and 4-40 UNC or M3 threaded insert
  - with mounting bracket, PCB clip and 4-40 UNC or M3 front spacer
- Quality class 3 (also available in quality class 1)
- Shell: Steel tin plated (brass tin plated or stainless steel available on request)

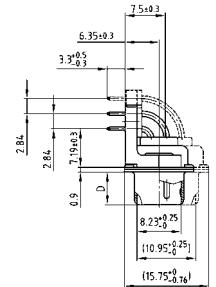
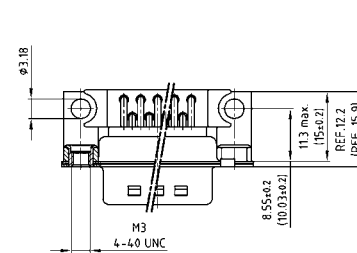
## PLUG CONNECTOR



No. of pos.	A -0.76	B -0.25	C	D -0.3
09	31.19	16.79	25.00 +0.12	6.12
15	39.52	25.12	33.30 +0.15 -0.10	6.12
25	53.42	38.84	47.04 +0.13	5.99
37	69.70	55.30	63.50 +0.13	5.99
50	67.31	52.68	61.10 +0.14 -0.11	5.99

PCB layout: Kat1kGFA

Mounting style: Threaded insert



50 pos. = Dim. in ( \_ )

## ORDER DATA

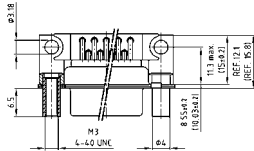
SOCKET CONNECTOR		
No. of pos.	Mounting style	Part Number
09	4-40 UNC Threaded insert	164 A 11519 X
15	4-40 UNC Threaded insert	164 A 11529 X
25	4-40 UNC Threaded insert	164 A 11539 X
37	4-40 UNC Threaded insert	164 A 11549 X
50	4-40 UNC Threaded insert	164 A 18969 X
09	M3 Threaded insert	164 A 13439 X
15	M3 Threaded insert	164 A 13449 X
25	M3 Threaded insert	164 A 13459 X
37	M3 Threaded insert	164 A 13469 X
50	M3 Threaded insert	164 A 18979 X

PLUG CONNECTOR		
No. of pos.	Mounting style	Part Number
09	4-40 UNC Threaded insert	163 A 13069 X
15	4-40 UNC Threaded insert	163 A 13079 X
25	4-40 UNC Threaded insert	163 A 13089 X
37	4-40 UNC Threaded insert	163 A 13099 X
50	4-40 UNC Threaded insert	163 A 18549 X
09	M3 Threaded insert	163 A 14959 X
15	M3 Threaded insert	163 A 14969 X
25	M3 Threaded insert	163 A 14979 X
37	M3 Threaded insert	163 A 14989 X
50	M3 Threaded insert	163 A 18559 X

# D-SUB STANDARD – MOUNTING STYLES

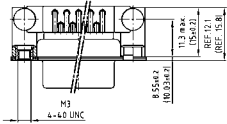
Solder pin – Angled – .318" / 7.19 mm – Precision machined contacts – Metal bracket

**ORDER DATA**



SOCKET CONNECTOR		
No. of pos.	Mounting style	Part Number
09	4-40 UNC Front spacer	164 A 16929 X
15	4-40 UNC Front spacer	164 A 16939 X
25	4-40 UNC Front spacer	164 A 16949 X
37	4-40 UNC Front spacer	164 A 16959 X
50	4-40 UNC Front spacer	164 A 19019 X
09	M3 Front spacer	164 A 16969 X
15	M3 Front spacer	164 A 16979 X
25	M3 Front spacer	164 A 16989 X
37	M3 Front spacer	164 A 16999 X
50	M3 Front spacer	164 A 19029 X

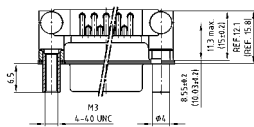
PLUG CONNECTOR		
No. of pos.	Mounting style	Part Number
09	4-40 UNC Front spacer	163 A 16519 X
15	4-40 UNC Front spacer	163 A 16529 X
25	4-40 UNC Front spacer	163 A 16539 X
37	4-40 UNC Front spacer	163 A 16549 X
50	4-40 UNC Front spacer	163 A 18589 X
09	M3 Front spacer	163 A 16559 X
15	M3 Front spacer	163 A 16569 X
25	M3 Front spacer	163 A 16579 X
37	M3 Front spacer	163 A 16589 X
50	M3 Front spacer	163 A 18599 X



SOCKET CONNECTOR		
No. of pos.	Mounting style	Part Number
09	PCB clip / 4-40 UNC Threaded insert	164 A 17939 X
15	PCB clip / 4-40 UNC Threaded insert	164 A 17949 X
25	PCB clip / 4-40 UNC Threaded insert	164 A 17959 X
37	PCB clip / 4-40 UNC Threaded insert	164 A 17969 X
50	PCB clip / 4-40 UNC Threaded insert	164 A 18989 X
09	PCB clip / M3 Threaded insert	164 A 17979 X
15	PCB clip / M3 Threaded insert	164 A 17989 X
25	PCB clip / M3 Threaded insert	164 A 17999 X
37	PCB clip / M3 Threaded insert	164 A 18009 X
50	PCB clip / M3 Threaded insert	164 A 18999 X

PLUG CONNECTOR		
No. of pos.	Mounting style	Part Number
09	PCB clip / 4-40 UNC Threaded insert	163 A 17529 X
15	PCB clip / 4-40 UNC Threaded insert	163 A 17539 X
25	PCB clip / 4-40 UNC Threaded insert	163 A 17549 X
37	PCB clip / 4-40 UNC Threaded insert	163 A 17559 X
50	PCB clip / 4-40 UNC Threaded insert	163 A 18569 X
09	PCB clip / M3 Threaded insert	163 A 17569 X
15	PCB clip / M3 Threaded insert	163 A 17579 X
25	PCB clip / M3 Threaded insert	163 A 17589 X
37	PCB clip / M3 Threaded insert	163 A 17599 X
50	PCB clip / M3 Threaded insert	163 A 18579 X

PCB clip .122" / 3.1 ± .004" / 0.10 mm hole diameter and .063" / 1.6 mm circuit board thickness



SOCKET CONNECTOR		
No. of pos.	Mounting style	Part Number
09	PCB clip / 4-40 UNC Front spacer	164 A 19039 X
15	PCB clip / 4-40 UNC Front spacer	164 A 19049 X
25	PCB clip / 4-40 UNC Front spacer	164 A 19059 X
37	PCB clip / 4-40 UNC Front spacer	164 A 19069 X
50	PCB clip / 4-40 UNC Front spacer	164 A 19079 X
09	PCB clip / M3 Front spacer	164 A 19089 X
15	PCB clip / M3 Front spacer	164 A 19099 X
25	PCB clip / M3 Front spacer	164 A 19109 X
37	PCB clip / M3 Front spacer	164 A 19119 X
50	PCB clip / M3 Front spacer	164 A 19129 X

PLUG CONNECTOR		
No. of pos.	Mounting style	Part Number
09	PCB clip / 4-40 UNC Front spacer	163 A 18609 X
15	PCB clip / 4-40 UNC Front spacer	163 A 18619 X
25	PCB clip / 4-40 UNC Front spacer	163 A 18629 X
37	PCB clip / 4-40 UNC Front spacer	163 A 18639 X
50	PCB clip / 4-40 UNC Front spacer	163 A 18649 X
09	PCB clip / M3 Front spacer	163 A 18659 X
15	PCB clip / M3 Front spacer	163 A 18669 X
25	PCB clip / M3 Front spacer	163 A 18679 X
37	PCB clip / M3 Front spacer	163 A 18689 X
50	PCB clip / M3 Front spacer	163 A 18699 X

PCB clip .122" / 3.1 ± .004" / 0.10 mm hole diameter and .063" / 1.6 mm circuit board thickness

PCB layout: Kat1kGEA

PCB layout: Kat1kGFA

## X-ON Electronics

Largest Supplier of Electrical and Electronic Components

*Click to view similar products for [D-Sub Standard Connectors](#) category:*

*Click to view products by [CONEC](#) manufacturer:*

Other Similar products are found below :

[56F711-015](#) [012-9507-004](#) [LV242999-142T12](#) [015-0341-000](#) [015-0349-000](#) [015-0372-005](#) [015-0372-008](#) [015-8755-001](#) [020419-0104](#) [012-0467-000](#) [012-0515-000](#) [012-9507-034](#) [012-9507-114](#) [020745-0008](#) [609-25P](#) [M24308/2-23Z](#) [CT2-14S-2PCA34](#) [CT2-18-11PCAU](#) [CT2-36-15SC](#) [CT6-14S-2SC](#) [CT6E14SA7SC](#) [CT6E22-14PC](#) [CT6E22-14PS](#) [CT6E22-22PS](#) [M83513/01-FC](#) [M85049/48-3-2F](#) [6STD09PCM99B70X](#) [6STD09SCM99B30X](#) [6STD09SCT99S40X](#) [6STD15PCT99S40X](#) [6STD15SCM99B30X](#) [6STD15SCT99S40X](#) [6STF09PCM05B70X](#) [7-135760-9](#) [MC11E-10-6SN](#) [747552-3](#) [MD1-21PS](#) [MDM-15SCBRM7-F222](#) [MDM96517-699](#) [MDM96521-744](#) [MDVB1-21SL1](#) [MIK0-1-7SH003](#) [MIKQ6-7SH076](#) [MIKQ7-7PH077](#) [MIKQ7-7PH11](#) [MIKQ7-7PH32](#) [MIKQ9-7PH003](#) [MJSV-28SL61](#) [MKJ4A1F14-55S](#) [8-135760-3](#)