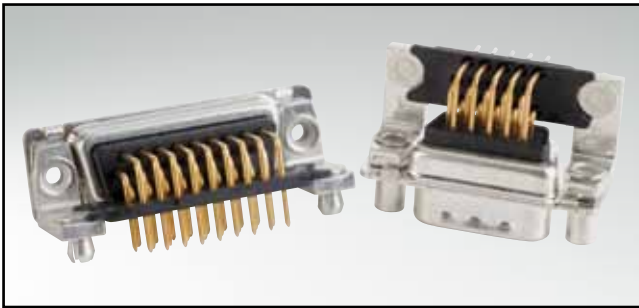


D-SUB HIGH DENSITY

Solder pin – Angled – .350"/7.98 mm – Precision machined contacts – Metal bracket

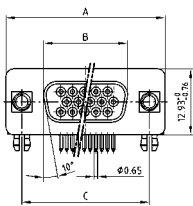


RoHS compliant – CSA listed, File No.: LR 115000-1 – UL listed, File No.: E202784

DESCRIPTION

- Mounting styles:
 - with mounting bracket, PCB clip and 4-40 UNC or M3 threaded insert
 - with mounting bracket, PCB clip and 4-40 UNC or M3 front spacer
- Quality class 3 (also available in quality class 1)
- Shell: Steel tin plated (brass tin plated or stainless steel available on request)

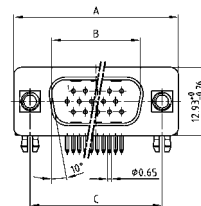
SOCKET CONNECTOR



No. of pos.	A -0.76	B -0.25	C
15	31.19	16.46	25.00 ^{+0.12}
26	39.52	24.79	33.30 ^{+0.15} _{-0.10}
44	53.42	38.50	47.04 ^{+0.13}
62	69.70	54.96	63.50 ^{+0.13}
78	67.31	52.55	61.10 ^{+0.14} _{-0.11}

PCB layout: Kat1iU1A

PLUG CONNECTOR

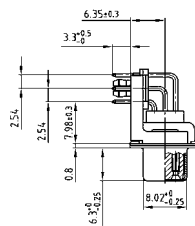
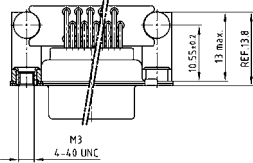


No. of pos.	A -0.76	B +0.25	C	D -0.3
15	31.19	16.79	25.00 ^{+0.12}	6.12
26	39.52	25.12	33.30 ^{+0.15} _{-0.10}	6.12
44	53.42	38.84	47.04 ^{+0.13}	5.99
62	69.70	55.30	63.50 ^{+0.13}	5.99
78	67.31	52.68	61.10 ^{+0.14} _{-0.11}	5.99

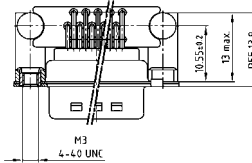
PCB layout: Kat1iU2A

15-62 pos.

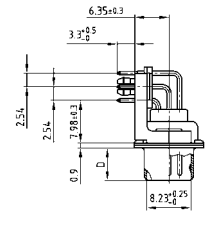
Mounting style: PCB clip, threaded insert



Mounting style: PCB clip, threaded insert

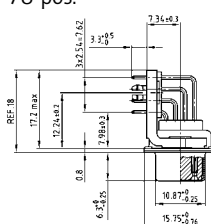
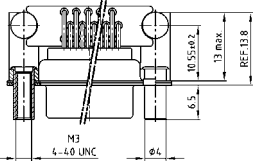


15-62 pos.

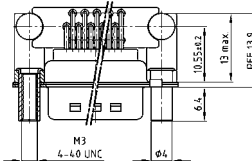


78 pos.

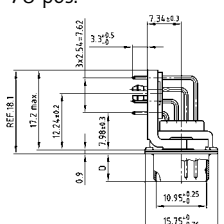
Mounting style: PCB clip, front spacer



Mounting style: PCB clip, front spacer



78 pos.



ORDER DATA

SOCKET CONNECTOR		
No. of pos.	Mounting style	Part Number
15	PCB clip / 4-40 UNC Threaded insert	164 A 18179 X
26	PCB clip / 4-40 UNC Threaded insert	164 A 18189 X
44	PCB clip / 4-40 UNC Threaded insert	164 A 18199 X
62	PCB clip / 4-40 UNC Threaded insert	164 A 18209 X
78	PCB clip / 4-40 UNC Threaded insert	164 A 18629 X
15	PCB clip / M3 Threaded insert	164 A 18219 X
26	PCB clip / M3 Threaded insert	164 A 18229 X
44	PCB clip / M3 Threaded insert	164 A 18239 X
62	PCB clip / M3 Threaded insert	164 A 18249 X
78	PCB clip / M3 Threaded insert	164 A 18639 X
15	PCB clip / 4-40 UNC Front spacer	164 A 18259 X
26	PCB clip / 4-40 UNC Front spacer	164 A 18269 X
44	PCB clip / 4-40 UNC Front spacer	164 A 18279 X
62	PCB clip / 4-40 UNC Front spacer	164 A 18289 X
78	PCB clip / 4-40 UNC Front spacer	164 A 18649 X
15	PCB clip / M3 Front spacer	164 A 18299 X
26	PCB clip / M3 Front spacer	164 A 18309 X
44	PCB clip / M3 Front spacer	164 A 18319 X
62	PCB clip / M3 Front spacer	164 A 18329 X
78	PCB clip / M3 Front spacer	164 A 18659 X

PLUG CONNECTOR		
No. of pos.	Mounting style	Part Number
15	PCB clip / 4-40 UNC Threaded insert	163 A 17769 X
26	PCB clip / 4-40 UNC Threaded insert	163 A 17779 X
44	PCB clip / 4-40 UNC Threaded insert	163 A 17789 X
62	PCB clip / 4-40 UNC Threaded insert	163 A 17799 X
78	PCB clip / 4-40 UNC Threaded insert	163 A 18219 X
15	PCB clip / M3 Threaded insert	163 A 17809 X
26	PCB clip / M3 Threaded insert	163 A 17819 X
44	PCB clip / M3 Threaded insert	163 A 17829 X
62	PCB clip / M3 Threaded insert	163 A 17839 X
78	PCB clip / M3 Threaded insert	163 A 18229 X
15	PCB clip / 4-40 UNC Front spacer	163 A 17849 X
26	PCB clip / 4-40 UNC Front spacer	163 A 17859 X
44	PCB clip / 4-40 UNC Front spacer	163 A 17869 X
62	PCB clip / 4-40 UNC Front spacer	163 A 17879 X
78	PCB clip / 4-40 UNC Front spacer	163 A 18239 X
15	PCB clip / M3 Front spacer	163 A 17889 X
26	PCB clip / M3 Front spacer	163 A 17899 X
44	PCB clip / M3 Front spacer	163 A 17909 X
62	PCB clip / M3 Front spacer	163 A 17919 X
78	PCB clip / M3 Front spacer	163 A 18249 X

PCB clip .122"/3.1 ± .004"/0.10 mm hole diameter and .063"/1.6 mm circuit board thickness

X-ON Electronics

Largest Supplier of Electrical and Electronic Components

Click to view similar products for [D-Sub High Density Connectors](#) category:

Click to view products by [CONEC](#) manufacturer:

Other Similar products are found below :

[97-3250-11](#) [163A17089X](#) [164A17199X](#) [164C18629X](#) [L717HDB44POL2R210](#) [L717HDEH15POL2](#) [L777HDE15P](#) [L77HDE15SC309](#)
[163A16759X](#) [163A16839X](#) [163A16989X](#) [163A17079X](#) [164A17329X](#) [164A18219X](#) [241A16440X](#) [241A16550X](#) [241A16680X](#)
[241A20810X](#) [241A25740X](#) [CT25-44P](#) [MDBE15PE766](#) [L177HDE15SOL2RM23](#) [L177HRC62SVFM](#) [L177HRCG62S](#)
[L717HDEG15POL2RM5](#) [L77HDA26SVF](#) [L77HDE15SD1CO](#) [L77HDEH15SOL2RM832](#) [DAMA-15S-WS](#) [443895-3](#) [106698-1](#) [280-](#)
[012K2C](#) [DBMV13H3SNA197](#) [L177HRB44S](#) [164A17039X](#) [09562004701510](#) [L777HRC62P](#) [241A17960X](#) [164A18269X](#) [280-019S1S9MEN](#)
[L777HDEG15P](#) [280-018P3S25MEGN](#) [206504-2](#) [40-9515HDSP](#) [2057140-1](#) [C115370-6002](#) [DFMA104SNMBFR172FR022](#) [HDC9F200E2S](#)
[L717HDAG26POL2RM8](#) [241A28180X](#)