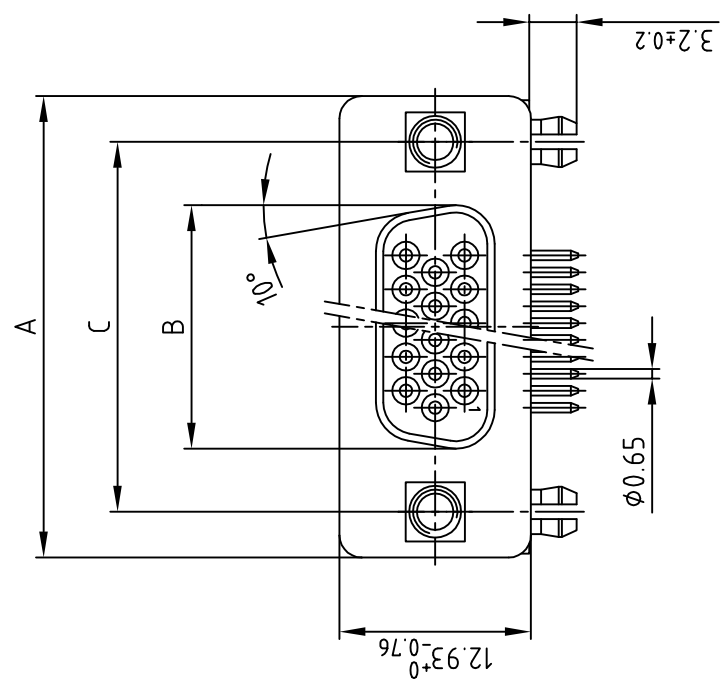
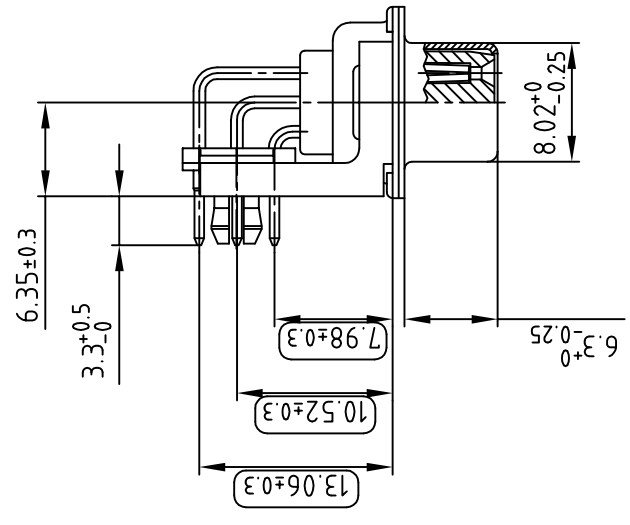
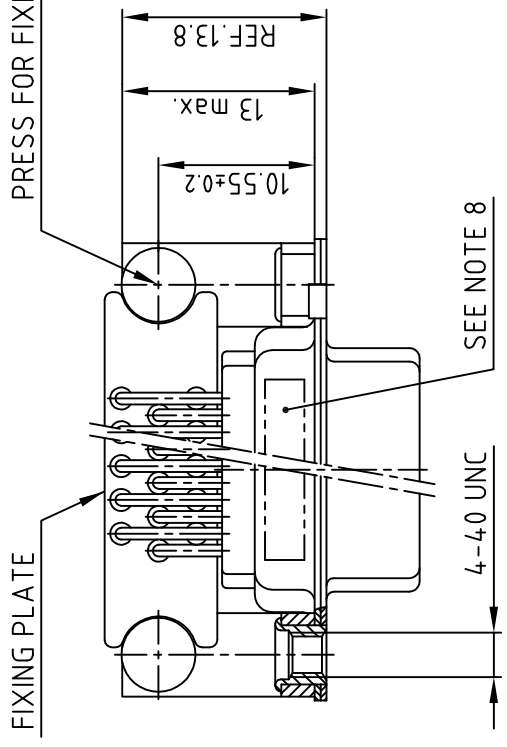


used for: D-SUB HD



Part NO.	POS.	A -0.76	B -0.25	C
164A05929A	15	31.19	16.46	25.00 $\begin{smallmatrix} +0.12 \\ -0.13 \end{smallmatrix}$
164A05939A	26	39.52	24.79	33.30 $\begin{smallmatrix} +0.15 \\ -0.17 \end{smallmatrix}$
	44	53.42	38.50	47.04 ± 0.13
	62	69.70	54.96	63.50 ± 0.13



NOTES:

- METALSHELLS: STEEL; min. 320µ" TIN
- INSULATORS: PBT GF UL 94 V-0, BLACK
- CONTACTS: COPPER ALLOY
PLATING: 8µ" HARD GOLD OVER min. 50µ" NICKEL
- METAL BRACKET: STEEL; min. 320µ" TIN over 80µ" NICKEL
- THREADED INSERT: COPPER ALLOY; min. 200µ" TIN over 80µ" NICKEL
- PCB-SNAP: COPPER ALLOY; min. 200µ" TIN over 80µ" NICKEL
PCB-HOLE: $\phi 3.1 \pm 0.1$; PCB THICKNESS 1.6mm
- P.C.B. HOLE DRILLINGS ON SHEET 2
- CONNECTOR IS PART MARKED: [PART NO.] CONEC [ABC]
- MAXIMUM TORQUE VALUE FOR THREAD: 6" LBS
- [] = CHECK DIMENSION

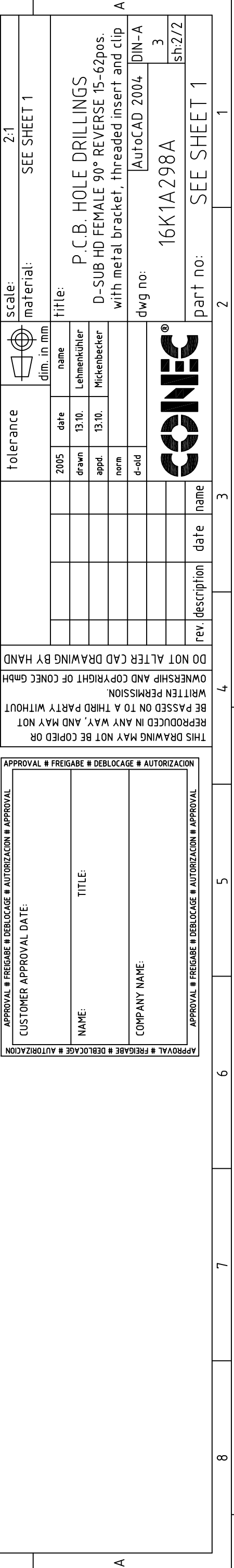
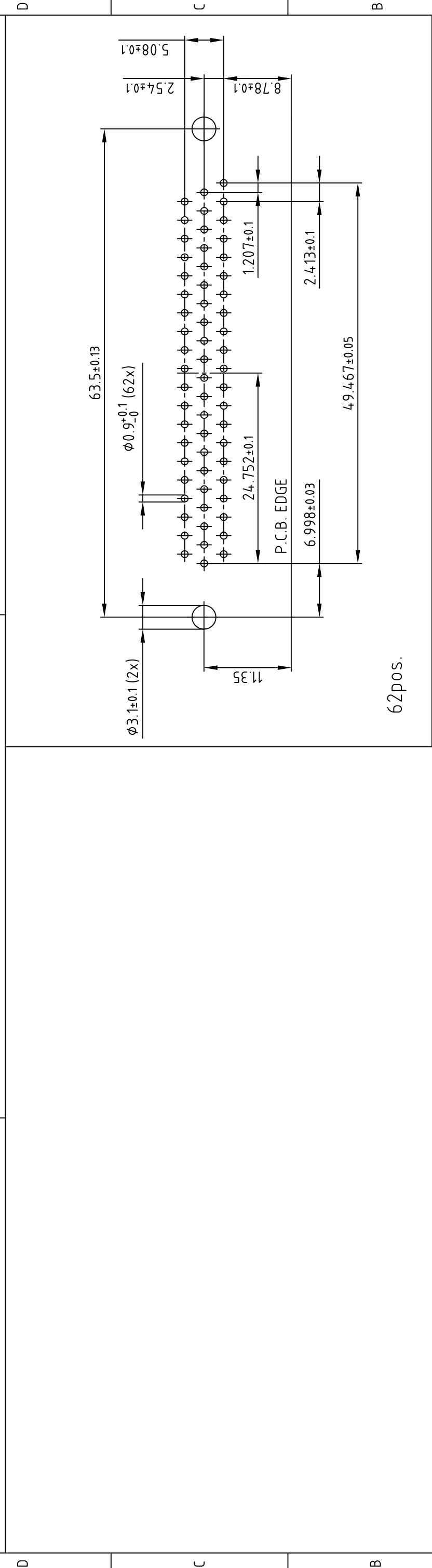
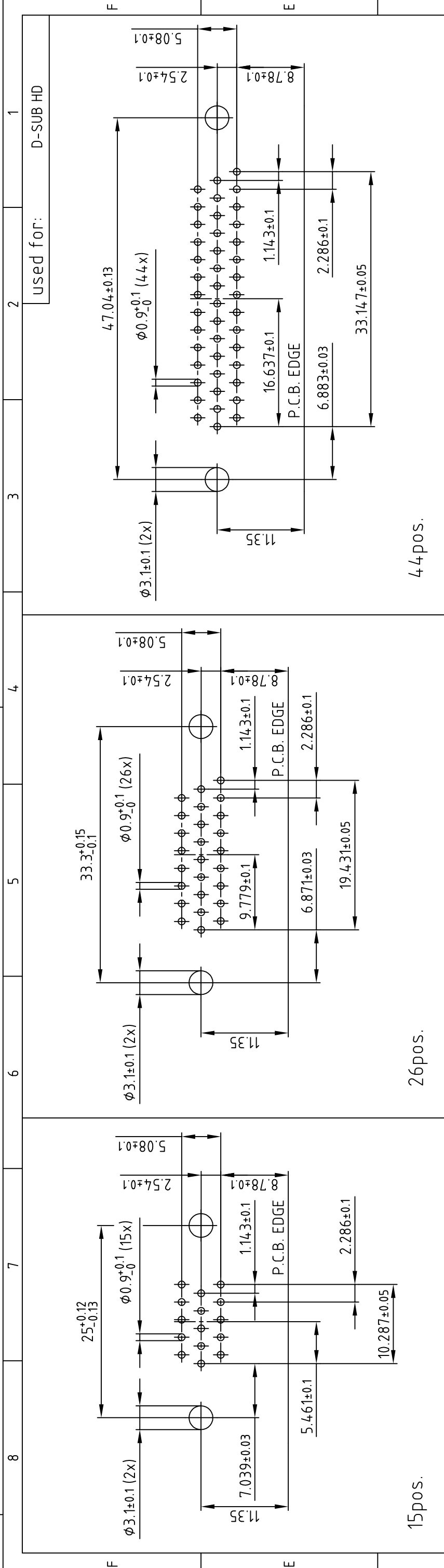
APPROVAL # FREIGABE # DEBLOCAGE # AUTORIZACION	APPROVAL # FREIGABE # DEBLOCAGE # AUTORIZACION # APPROVAL
CUSTOMER APPROVAL DATE:	TITLE:
NAME:	COMPANY NAME:
APPROVAL # FREIGABE # DEBLOCAGE # AUTORIZACION	APPROVAL # FREIGABE # DEBLOCAGE # AUTORIZACION # APPROVAL

THIS DRAWING MAY NOT BE COPIED OR REPRODUCED IN ANY WAY, AND MAY NOT BE PASSED ON TO A THIRD PARTY WITHOUT WRITTEN PERMISSION.
OWNERSHIP AND COPYRIGHT OF CONEC GMBH DO NOT ALTER CAD DRAWING BY HAND

tolerance	dim. in mm	dim. in mm	dim. in mm
2001	name	name	name
drawn	18.09.	E. Mickenbecker	
appd.	18.09.	A. Mickenbecker	
norm			
d-old			

Directive 2002/95/EC RoHS compliant

scale:	2:1
material:	SEE NOTES
title:	D-SUB HD FEMALE 90° REVERSE 0.314inch 15-62pos. with metal bracket, threaded insert and clip
dwg no:	AutoCAD 2000 [DIN-A] 16K1A298A
part no:	SEE TABLE



used for: D-SUB HD

scale: 2:1 material: SEE SHEET 1

title: P.C.B. HOLE DRILLINGS
D-SUB HD FEMALE 90° REVERSE 15-62pos.
with metal bracket, threaded insert and clip

dwg no: AutoCAD 2004 DIN-A 3
16K1A298A sh:2/2

part no: SEE SHEET 1

tolerance dim. in mm

dim.	tolerance
0.1 - 0.5	±0.05
0.5 - 1.0	±0.08
1.0 - 2.0	±0.10
2.0 - 5.0	±0.15
5.0 - 10.0	±0.20
10.0 - 20.0	±0.25
20.0 - 50.0	±0.30
50.0 - 100.0	±0.40
100.0 - 200.0	±0.50
200.0 - 500.0	±0.60
500.0 - 1000.0	±0.70
> 1000.0	±0.80

date	name
2005	Lehmenkühler
13.10.	Mickenbecker
13.10.	
norm	
d-old	

CONEC

rev.	description	date	name

DO NOT ALTER CAD DRAWING BY HAND
OWNERSHIP AND COPYRIGHT OF CONEC GMBH
WRITTEN PERMISSION
BE PASSED ON TO A THIRD PARTY WITHOUT
REPRODUCED IN ANY WAY, AND MAY NOT
THIS DRAWING MAY NOT BE COPIED OR

APPROVAL # FREIGABE # DEBLOCAGE # AUTORIZACION # APPROVAL

CUSTOMER APPROVAL DATE:

NAME: TITLE:

COMPANY NAME:

APPROVAL # FREIGABE # DEBLOCAGE # AUTORIZACION # APPROVAL

APPROVAL # FREIGABE # DEBLOCAGE # AUTORIZACION # APPROVAL

APPROVAL # FREIGABE # DEBLOCAGE # AUTORIZACION # APPROVAL

APPROVAL # FREIGABE # DEBLOCAGE # AUTORIZACION # APPROVAL

APPROVAL # FREIGABE # DEBLOCAGE # AUTORIZACION # APPROVAL

APPROVAL # FREIGABE # DEBLOCAGE # AUTORIZACION # APPROVAL

APPROVAL # FREIGABE # DEBLOCAGE # AUTORIZACION # APPROVAL

APPROVAL # FREIGABE # DEBLOCAGE # AUTORIZACION # APPROVAL

APPROVAL # FREIGABE # DEBLOCAGE # AUTORIZACION # APPROVAL

APPROVAL # FREIGABE # DEBLOCAGE # AUTORIZACION # APPROVAL

APPROVAL # FREIGABE # DEBLOCAGE # AUTORIZACION # APPROVAL

APPROVAL # FREIGABE # DEBLOCAGE # AUTORIZACION # APPROVAL

APPROVAL # FREIGABE # DEBLOCAGE # AUTORIZACION # APPROVAL

APPROVAL # FREIGABE # DEBLOCAGE # AUTORIZACION # APPROVAL

APPROVAL # FREIGABE # DEBLOCAGE # AUTORIZACION # APPROVAL

APPROVAL # FREIGABE # DEBLOCAGE # AUTORIZACION # APPROVAL

APPROVAL # FREIGABE # DEBLOCAGE # AUTORIZACION # APPROVAL

APPROVAL # FREIGABE # DEBLOCAGE # AUTORIZACION # APPROVAL

APPROVAL # FREIGABE # DEBLOCAGE # AUTORIZACION # APPROVAL

APPROVAL # FREIGABE # DEBLOCAGE # AUTORIZACION # APPROVAL

APPROVAL # FREIGABE # DEBLOCAGE # AUTORIZACION # APPROVAL

APPROVAL # FREIGABE # DEBLOCAGE # AUTORIZACION # APPROVAL

APPROVAL # FREIGABE # DEBLOCAGE # AUTORIZACION # APPROVAL

APPROVAL # FREIGABE # DEBLOCAGE # AUTORIZACION # APPROVAL

APPROVAL # FREIGABE # DEBLOCAGE # AUTORIZACION # APPROVAL

APPROVAL # FREIGABE # DEBLOCAGE # AUTORIZACION # APPROVAL

APPROVAL # FREIGABE # DEBLOCAGE # AUTORIZACION # APPROVAL

APPROVAL # FREIGABE # DEBLOCAGE # AUTORIZACION # APPROVAL

APPROVAL # FREIGABE # DEBLOCAGE # AUTORIZACION # APPROVAL

APPROVAL # FREIGABE # DEBLOCAGE # AUTORIZACION # APPROVAL

APPROVAL # FREIGABE # DEBLOCAGE # AUTORIZACION # APPROVAL

APPROVAL # FREIGABE # DEBLOCAGE # AUTORIZACION # APPROVAL

APPROVAL # FREIGABE # DEBLOCAGE # AUTORIZACION # APPROVAL

APPROVAL # FREIGABE # DEBLOCAGE # AUTORIZACION # APPROVAL

APPROVAL # FREIGABE # DEBLOCAGE # AUTORIZACION # APPROVAL

X-ON Electronics

Largest Supplier of Electrical and Electronic Components

Click to view similar products for [D-Sub High Density Connectors](#) category:

Click to view products by [CONEC](#) manufacturer:

Other Similar products are found below :

[97-3250-11](#) [163A17089X](#) [164A17199X](#) [164C18629X](#) [L717HDB44POL2R210](#) [L717HDEH15POL2](#) [L777HDE15P](#) [L77HDE15SC309](#)
[163A16759X](#) [163A16839X](#) [163A16989X](#) [163A17079X](#) [164A17329X](#) [164A18219X](#) [241A16440X](#) [241A16550X](#) [241A16680X](#)
[241A20810X](#) [241A25740X](#) [CT25-44P](#) [MDBE15PE766](#) [L177HDE15SOL2RM23](#) [L177HRC62SVFM](#) [L177HRCG62S](#)
[L717HDEG15POL2RM5](#) [L77HDA26SVF](#) [L77HDE15SD1CO](#) [L77HDEH15SOL2RM832](#) [DAMA-15S-WS](#) [443895-3](#) [106698-1](#) [280-](#)
[012K2C](#) [DBMV13H3SNA197](#) [L177HRB44S](#) [164A17039X](#) [09562004701510](#) [L777HRC62P](#) [241A17960X](#) [164A18269X](#) [280-019S1S9MEN](#)
[L777HDEG15P](#) [280-018P3S25MEGN](#) [206504-2](#) [40-9415HDSP](#) [40-9515HDSP](#) [2057140-1](#) [C115370-6002](#) [DFMA104SNMBFR172FR022](#)
[HDC9F200E2S](#) [L717HDAG26POL2RM8](#)