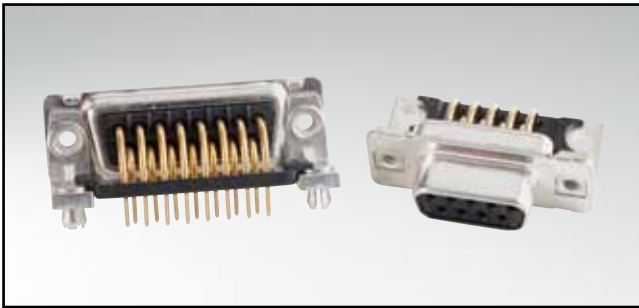


D-SUB STANDARD

Solder pin – Angled – .370" / 9.4 mm – Precision machined contacts – Metal bracket

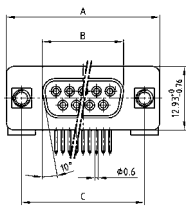


RoHS compliant – CSA listed, File No.: LR 115000-1 – UL listed, File No.: E202784

DESCRIPTION

- Mounting styles:
 - with mounting bracket and 4-40 UNC or M3 threaded insert
 - with mounting bracket, PCB clip and 4-40 UNC or M3 threaded insert
- Quality class 3 (also available in quality class 1)
- Shell: Steel tin plated (brass tin plated or stainless steel available on request)

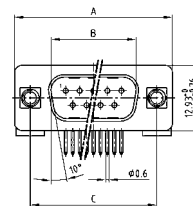
SOCKET CONNECTOR



No. of pos.	A -0.76	B -0.25	C
09	31.19	16.46	25.00 +0.12
15	39.52	24.79	33.30 +0.15
25	53.42	38.50	47.04 +0.13
37	69.70	54.96	63.50 +0.13
50	67.31	52.55	61.10 +0.14

PCB layout: Kat1kGAA

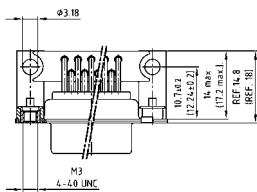
PLUG CONNECTOR



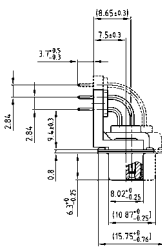
No. of pos.	A -0.76	B -0.25	C	D -0.3
09	31.19	16.79	25.00 +0.12	6.12
15	39.52	25.12	33.30 +0.15	6.12
25	53.42	38.84	47.04 +0.13	5.99
37	69.70	55.30	63.50 +0.13	5.99
50	67.31	52.68	61.10 +0.14	5.99

PCB layout: Kat1kGHA

Mounting style: Threaded insert

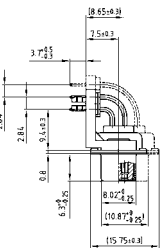
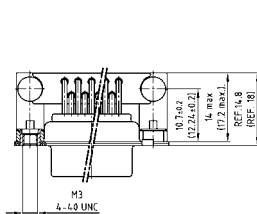


50 pos. = Dim. in (_ _)



50 pos. = Dim. in (_ _)

Mounting style: PCB clip, threaded insert



ORDER DATA

SOCKET CONNECTOR		
No. of pos.	Mounting style	Part Number
09	4-40 UNC Threaded insert	164 A 10969 X
15	4-40 UNC Threaded insert	164 A 10979 X
25	4-40 UNC Threaded insert	164 A 10989 X
37	4-40 UNC Threaded insert	164 A 10999 X
50	4-40 UNC Threaded insert	164 A 18739 X
09	M3 Threaded insert	164 A 11019 X
15	M3 Threaded insert	164 A 11029 X
25	M3 Threaded insert	164 A 11039 X
37	M3 Threaded insert	164 A 11049 X
50	M3 Threaded insert	164 A 18749 X
09	PCB clip / 4-40 UNC Threaded insert	164 A 16769 X
15	PCB clip / 4-40 UNC Threaded insert	164 A 16779 X
25	PCB clip / 4-40 UNC Threaded insert	164 A 16789 X
37	PCB clip / 4-40 UNC Threaded insert	164 A 16799 X
50	PCB clip / 4-40 UNC Threaded insert	164 A 18759 X
09	PCB clip / M3 Threaded insert	164 A 16809 X
15	PCB clip / M3 Threaded insert	164 A 16819 X
25	PCB clip / M3 Threaded insert	164 A 16829 X
37	PCB clip / M3 Threaded insert	164 A 16839 X
50	PCB clip / M3 Threaded insert	164 A 18769 X

PLUG CONNECTOR		
No. of pos.	Mounting style	Part Number
09	4-40 UNC Threaded insert	163 A 12019 X
15	4-40 UNC Threaded insert	163 A 12029 X
25	4-40 UNC Threaded insert	163 A 12039 X
37	4-40 UNC Threaded insert	163 A 12049 X
50	4-40 UNC Threaded insert	163 A 18319 X
09	M3 Threaded insert	163 A 12069 X
15	M3 Threaded insert	163 A 12079 X
25	M3 Threaded insert	163 A 12089 X
37	M3 Threaded insert	163 A 12099 X
50	M3 Threaded insert	163 A 18329 X
09	PCB clip / 4-40 UNC Threaded insert	163 A 16359 X
15	PCB clip / 4-40 UNC Threaded insert	163 A 16369 X
25	PCB clip / 4-40 UNC Threaded insert	163 A 16379 X
37	PCB clip / 4-40 UNC Threaded insert	163 A 16389 X
50	PCB clip / 4-40 UNC Threaded insert	163 A 18339 X
09	PCB clip / M3 Threaded insert	163 A 16399 X
15	PCB clip / M3 Threaded insert	163 A 16409 X
25	PCB clip / M3 Threaded insert	163 A 16419 X
37	PCB clip / M3 Threaded insert	163 A 16429 X
50	PCB clip / M3 Threaded insert	163 A 18349 X

PCB clip .122" / 3.1 ± .004" / 0.10 mm hole diameter and .063" / 1.6 mm circuit board thickness

X-ON Electronics

Largest Supplier of Electrical and Electronic Components

Click to view similar products for [D-Sub Standard Connectors](#) category:

Click to view products by [CONEC](#) manufacturer:

Other Similar products are found below :

[56F711-015](#) [012-9507-004](#) [LV242999-142T12](#) [015-0341-000](#) [015-0349-000](#) [015-0372-005](#) [015-0372-008](#) [015-8755-001](#) [020419-0104](#) [012-0467-000](#) [012-0515-000](#) [012-9507-034](#) [012-9507-114](#) [020745-0008](#) [609-25P](#) [CT2-14S-2PCA34](#) [CT2-18-11PCAU](#) [CT2-36-15SC](#) [CT6-14S-2SC](#) [CT6E14SA7SC](#) [CT6E22-14PC](#) [CT6E22-14PS](#) [CT6E22-22PS](#) [M83513/01-FC](#) [M85049/48-3-2F](#) [6STD09PCM99B70X](#) [6STD09SCM99B30X](#) [6STD09SCT99S40X](#) [6STD15PCT99S40X](#) [6STD15SCM99B30X](#) [6STD15SCT99S40X](#) [6STF09PCM05B70X](#) [7-135760-9](#) [MC11E-10-6SN](#) [747552-3](#) [MD1-21PS](#) [MDM-15SCBRM7-F222](#) [MDM96517-699](#) [MDM96521-744](#) [MDVB1-21SL1](#) [MIK0-1-7SH003](#) [MIKQ6-7SH076](#) [MIKQ7-7PH077](#) [MIKQ7-7PH11](#) [MIKQ7-7PH32](#) [MIKQ9-7PH003](#) [MJSV-28SL61](#) [MKJ4A1F14-55S](#) [8-135760-3](#) [8STD09PCM99B30X](#)