

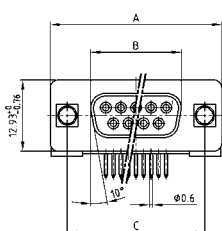
D-SUB STANDARD

Solder pin – Angled – .370" / 9.4 mm – Precision machined contacts – Plastic bracket



RoHS compliant – CSA listed, File No.: LR 115000-1 – UL listed, File No.: E202784

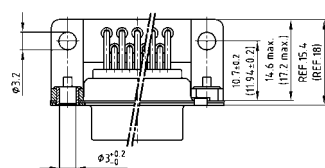
SOCKET CONNECTOR



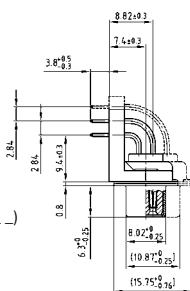
No. of pos.	A -0.76	B -0.25	C
09	31.19	16.46	25.00 +0.12
15	39.52	24.79	33.30 +0.15 -0.10
25	53.42	38.50	47.04 +0.13
37	69.70	54.96	63.50 +0.13
50	67.31	52.55	61.10 +0.14 -0.11

PCB layout: Kat1kGGA

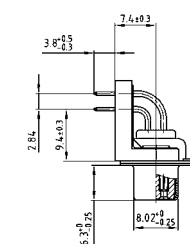
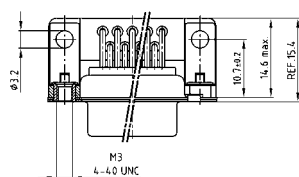
Mounting style: Through-hole



50 pos. = Dim. in (_)



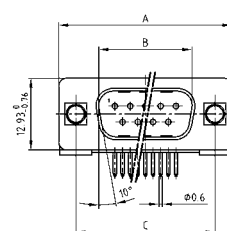
Mounting style: Threaded insert



DESCRIPTION

- Mounting styles:
 - with mounting bracket and $\varnothing .118''/3$ mm through-hole
 - with mounting bracket, grounding strap and 4-40 UNC or M3 threaded insert
 - with mounting bracket, grounding strap and 4-40 UNC or M3 front spacer
 - with mounting bracket, PCB clip and 4-40 UNC or M3 threaded insert
 - with mounting bracket, PCB clip and 4-40 UNC or M3 front spacer
- Quality class 3 (also available in quality class 1)
- Shell: Steel tin plated (brass tin plated or stainless steel available on request)

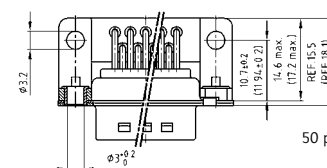
PLUG CONNECTOR



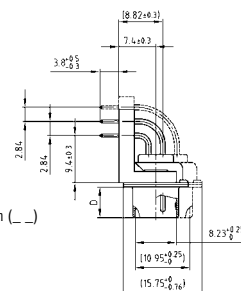
No. of pos.	A -0.76	B -0.25	C	D -0.3
09	31.19	16.79	25.00 +0.12	6.12
15	39.52	25.12	33.30 +0.15 -0.10	6.12
25	53.42	38.84	47.04 +0.13	5.99
37	69.70	55.30	63.50 +0.13	5.99
50	67.31	52.68	61.10 +0.14 -0.11	5.99

PCB layout: Kat1kGHA

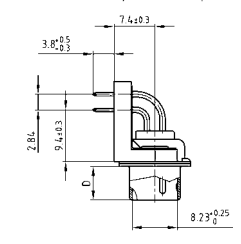
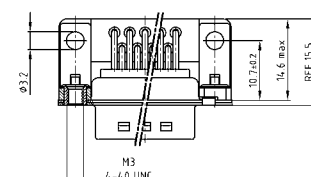
Mounting style: Through-hole



50 pos. = Dim. in (_)



Mounting style: Threaded insert



ORDER DATA

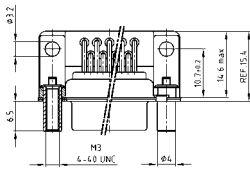
SOCKET CONNECTOR		
No. of pos.	Mounting style	Part Number
09	Through-hole	164 A 10669 X
15	Through-hole	164 A 10679 X
25	Through-hole	164 A 10689 X
37	Through-hole	164 A 10699 X
50	Through-hole	164 A 10709 X
09	Grounding strap / 4-40 UNC Threaded insert	164 A 12329 X
15	Grounding strap / 4-40 UNC Threaded insert	164 A 12339 X
25	Grounding strap / 4-40 UNC Threaded insert	164 A 12349 X
37	Grounding strap / 4-40 UNC Threaded insert	164 A 12359 X
09	Grounding strap / M3 Threaded insert	164 A 12519 X
15	Grounding strap / M3 Threaded insert	164 A 12529 X
25	Grounding strap / M3 Threaded insert	164 A 12539 X
37	Grounding strap / M3 Threaded insert	164 A 12549 X

PLUG CONNECTOR		
No. of pos.	Mounting style	Part Number
09	Through-hole	163 A 11719 X
15	Through-hole	163 A 11729 X
25	Through-hole	163 A 11739 X
37	Through-hole	163 A 11749 X
50	Through-hole	163 A 11759 X
09	Grounding strap / 4-40 UNC Threaded insert	163 A 14119 X
15	Grounding strap / 4-40 UNC Threaded insert	163 A 14129 X
25	Grounding strap / 4-40 UNC Threaded insert	163 A 14139 X
37	Grounding strap / 4-40 UNC Threaded insert	163 A 14149 X
09	Grounding strap / M3 Threaded insert	163 A 14169 X
15	Grounding strap / M3 Threaded insert	163 A 14179 X
25	Grounding strap / M3 Threaded insert	163 A 14189 X
37	Grounding strap / M3 Threaded insert	163 A 14199 X

D-SUB STANDARD – MOUNTING STYLES

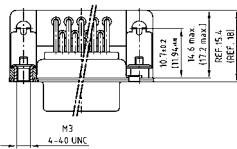
Solder pin – Angled – .370" / 9.4 mm – Precision machined contacts – Plastic bracket

ORDER DATA



SOCKET CONNECTOR		
No. of pos.	Mounting style	Part Number
09	Grounding strap/4-40 UNC Front spacer	164 A 12229 X
15	Grounding strap/4-40 UNC Front spacer	164 A 12239 X
25	Grounding strap/4-40 UNC Front spacer	164 A 12249 X
37	Grounding strap/4-40 UNC Front spacer	164 A 12259 X
09	Grounding strap/M3 Front spacer	164 A 12279 X
15	Grounding strap/M3 Front spacer	164 A 12289 X
25	Grounding strap/M3 Front spacer	164 A 12299 X
37	Grounding strap/M3 Front spacer	164 A 12309 X

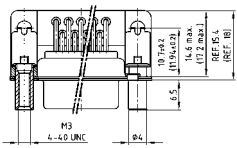
PLUG CONNECTOR		
No. of pos.	Mounting style	Part Number
09	Grounding strap/4-40 UNC Front spacer	163 A 13829 X
15	Grounding strap/4-40 UNC Front spacer	163 A 13839 X
25	Grounding strap/4-40 UNC Front spacer	163 A 13849 X
37	Grounding strap/4-40 UNC Front spacer	163 A 13859 X
09	Grounding strap/M3 Front spacer	163 A 13879 X
15	Grounding strap/M3 Front spacer	163 A 13889 X
25	Grounding strap/M3 Front spacer	163 A 13899 X
37	Grounding strap/M3 Front spacer	163 A 13909 X



SOCKET CONNECTOR		
No. of pos.	Mounting style	Part Number
09	PCB clip / 4-40 UNC Threaded insert	164 A 12969 X
15	PCB clip / 4-40 UNC Threaded insert	164 A 12979 X
25	PCB clip / 4-40 UNC Threaded insert	164 A 12989 X
37	PCB clip / 4-40 UNC Threaded insert	164 A 12999 X
50	PCB clip / 4-40 UNC Threaded insert	164 A 19139 X
09	PCB clip / M3 Threaded insert	164 A 13009 X
15	PCB clip / M3 Threaded insert	164 A 13019 X
25	PCB clip / M3 Threaded insert	164 A 13029 X
37	PCB clip / M3 Threaded insert	164 A 13039 X
50	PCB clip / M3 Threaded insert	164 A 19149 X

PLUG CONNECTOR		
No. of pos.	Mounting style	Part Number
09	PCB clip / 4-40 UNC Threaded insert	163 A 14489 X
15	PCB clip / 4-40 UNC Threaded insert	163 A 14499 X
25	PCB clip / 4-40 UNC Threaded insert	163 A 14509 X
37	PCB clip / 4-40 UNC Threaded insert	163 A 14519 X
50	PCB clip / 4-40 UNC Threaded insert	163 A 18709 X
09	PCB clip / M3 Threaded insert	163 A 14529 X
15	PCB clip / M3 Threaded insert	163 A 14539 X
25	PCB clip / M3 Threaded insert	163 A 14549 X
37	PCB clip / M3 Threaded insert	163 A 14559 X
50	PCB clip / M3 Threaded insert	163 A 18719 X

PCB clip .122" / 3.1 ± .004" / 0.10 mm hole diameter and .063" / 1.6 mm circuit board thickness



SOCKET CONNECTOR		
No. of pos.	Mounting style	Part Number
09	PCB clip / 4-40 UNC Front spacer	164 A 13089 X
15	PCB clip / 4-40 UNC Front spacer	164 A 13099 X
25	PCB clip / 4-40 UNC Front spacer	164 A 13109 X
37	PCB clip / 4-40 UNC Front spacer	164 A 13119 X
50	PCB clip / 4-40 UNC Front spacer	164 A 19159 X
09	PCB clip / M3 Front spacer	164 A 13129 X
15	PCB clip / M3 Front spacer	164 A 13139 X
25	PCB clip / M3 Front spacer	164 A 13149 X
37	PCB clip / M3 Front spacer	164 A 13159 X
50	PCB clip / M3 Front spacer	164 A 19169 X

PLUG CONNECTOR		
No. of pos.	Mounting style	Part Number
09	PCB clip / 4-40 UNC Front spacer	163 A 14609 X
15	PCB clip / 4-40 UNC Front spacer	163 A 14619 X
25	PCB clip / 4-40 UNC Front spacer	163 A 14629 X
37	PCB clip / 4-40 UNC Front spacer	163 A 14639 X
50	PCB clip / 4-40 UNC Front spacer	163 A 18729 X
09	PCB clip / M3 Front spacer	163 A 14649 X
15	PCB clip / M3 Front spacer	163 A 14659 X
25	PCB clip / M3 Front spacer	163 A 14669 X
37	PCB clip / M3 Front spacer	163 A 14679 X
50	PCB clip / M3 Front spacer	163 A 18739 X

PCB clip .122" / 3.1 ± .004" / 0.10 mm hole diameter and .063" / 1.6 mm circuit board thickness

PCB layout: Kat1kGGA

PCB layout: Kat1kGHA

X-ON Electronics

Largest Supplier of Electrical and Electronic Components

Click to view similar products for [D-Sub Standard Connectors](#) category:

Click to view products by [CONEC](#) manufacturer:

Other Similar products are found below :

[56F711-015](#) [012-9507-004](#) [LV242999-142T12](#) [015-0341-000](#) [015-0349-000](#) [015-0372-005](#) [015-0372-008](#) [015-8755-001](#) [020419-0104](#) [012-0467-000](#) [012-0515-000](#) [012-9507-034](#) [012-9507-114](#) [020745-0008](#) [609-25P](#) [M24308/2-23Z](#) [M24308315F](#) [CT2-14S-2PCA34](#) [CT2-18-11PCAU](#) [CT2-36-15SC](#) [CT6-14S-2SC](#) [CT6E14SA7SC](#) [CT6E22-14PC](#) [CT6E22-14PS](#) [CT6E22-22PS](#) [M83513/01-FC](#) [M85049/48-3-2F](#) [6STD09PCM99B70X](#) [6STD09SCM99B30X](#) [6STD09SCT99S40X](#) [6STD15PCT99S40X](#) [6STD15SCM99B30X](#) [6STD15SCT99S40X](#) [6STF09PCM05B70X](#) [7-135760-9](#) [MC11E-10-6SN](#) [747552-3](#) [MD1-21PS](#) [MDM-15SCBRM7-F222](#) [MDM96517-699](#) [MDM96521-744](#) [MDVB1-21SL1](#) [MIK0-1-7SH003](#) [MIKQ6-7SH076](#) [MIKQ7-7PH077](#) [MIKQ7-7PH11](#) [MIKQ7-7PH32](#) [MIKQ9-7PH003](#) [MJSV-28SL61](#) [MKJ4A1F14-55S](#)