

# D-SUB STANDARD – DUAL PORT

Solder pin – Angled – Precision machined contacts – .625" / 15.88 mm Connector spacing



RoHS compliant – CSA listed, File No.: LR 115000-1 – UL listed, File No.: E202784

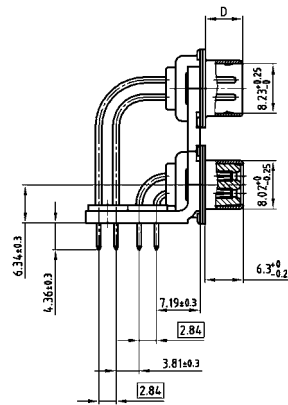
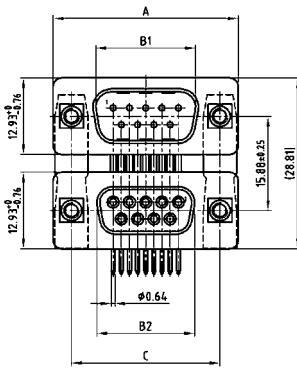
## DESCRIPTION

- Variations: pin – pin; socket – socket; pin – socket
- Mounting styles:
  - with mounting bracket and 4-40 UNC or M3 threaded insert
  - with mounting bracket and 4-40 UNC or M3 front spacer
  - with mounting bracket, PCB clip and 4-40 UNC or M3 threaded insert
  - with mounting bracket, PCB clip and 4-40 UNC or M3 front spacer
- Quality class 3 (also available in quality class 1)
- Shell: Steel tin plated (brass tin plated or stainless steel available on request)

## PRODUCT DRAWING

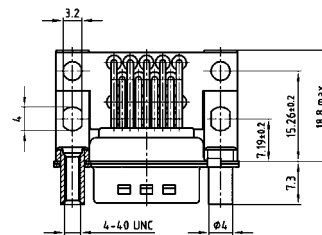
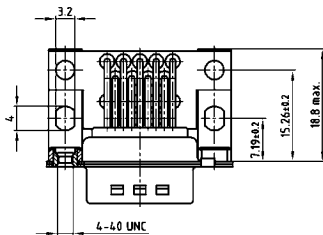
No. of pos.	A -0.76	B1 +0.25	B2 -0.25	C	D -0.30
2X 09	31.19	16.79	16.46	25.00 +0.12	6.12
2X 15	39.52	25.12	24.79	33.30 +0.15 +0.10	6.12
2X 25	53.42	38.84	38.50	47.04 +0.13	5.99
2X 37	69.70	55.30	54.96	63.50 +0.13	5.99

Graphically representation of only one variant!



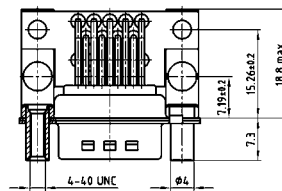
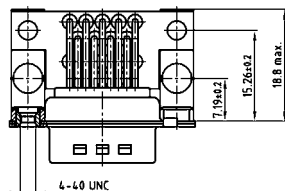
Mounting style: Threaded insert

Mounting style: Front spacer



Mounting style: PCB clip, threaded insert

Mounting style: PCB clip, front spacer

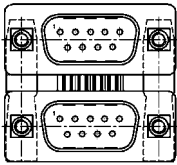


# D-SUB STANDARD – DUAL PORT VARIATIONS

Solder pin – Angled – Precision machined contacts – .625" / 15.88 mm Connector spacing

## ORDER DATA

PCB layout: Kat1U5A

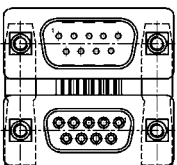


Variation:  
plug upper –  
plug bottom

No. of pos.	Mounting style 4-40 UNC	Part Number
09 / 09	Threaded insert	163 A 15199 X
15 / 15	Threaded insert	163 A 15209 X
25 / 25	Threaded insert	163 A 15219 X
37 / 37	Threaded insert	163 A 15229 X
09 / 09	Front spacer	163 A 15359 X
15 / 15	Front spacer	163 A 15369 X
25 / 25	Front spacer	163 A 15379 X
37 / 37	Front spacer	163 A 15389 X
09 / 09	PCB clip / Threaded insert	163 A 19969 X
15 / 15	PCB clip / Threaded insert	163 A 19979 X
25 / 25	PCB clip / Threaded insert	163 A 19989 X
37 / 37	PCB clip / Threaded insert	163 A 19999 X
09 / 09	PCB clip / Front spacer	163 A 19329 X
15 / 15	PCB clip / Front spacer	163 A 19339 X
25 / 25	PCB clip / Front spacer	163 A 19349 X
37 / 37	PCB clip / Front spacer	163 A 19359 X

No. of pos.	Mounting style M3	Part Number
09 / 09	Threaded insert	163 A 15279 X
15 / 15	Threaded insert	163 A 15289 X
25 / 25	Threaded insert	163 A 15299 X
37 / 37	Threaded insert	163 A 15309 X
09 / 09	Front spacer	163 A 15439 X
15 / 15	Front spacer	163 A 15449 X
25 / 25	Front spacer	163 A 15459 X
37 / 37	Front spacer	163 A 15469 X
09 / 09	PCB clip / Threaded insert	163 A 20049 X
15 / 15	PCB clip / Threaded insert	163 A 20059 X
25 / 25	PCB clip / Threaded insert	163 A 20069 X
37 / 37	PCB clip / Threaded insert	163 A 20079 X
09 / 09	PCB clip / Front spacer	163 A 19409 X
15 / 15	PCB clip / Front spacer	163 A 19419 X
25 / 25	PCB clip / Front spacer	163 A 19429 X
37 / 37	PCB clip / Front spacer	163 A 19439 X

PCB layout: Kat1U6A

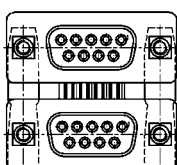


Variation:  
plug upper –  
socket bottom

No. of pos.	Mounting style 4-40 UNC	Part Number
09 / 09	Threaded insert	163 A 15239 X
15 / 15	Threaded insert	163 A 15249 X
25 / 25	Threaded insert	163 A 15259 X
37 / 37	Threaded insert	163 A 15269 X
09 / 09	Front spacer	163 A 15399 X
15 / 15	Front spacer	163 A 15409 X
25 / 25	Front spacer	163 A 15419 X
37 / 37	Front spacer	163 A 15429 X
09 / 09	PCB clip / Threaded insert	163 A 20009 X
15 / 15	PCB clip / Threaded insert	163 A 20019 X
25 / 25	PCB clip / Threaded insert	163 A 20029 X
37 / 37	PCB clip / Threaded insert	163 A 20039 X
09 / 09	PCB clip / Front spacer	163 A 19369 X
15 / 15	PCB clip / Front spacer	163 A 19379 X
25 / 25	PCB clip / Front spacer	163 A 19389 X
37 / 37	PCB clip / Front spacer	163 A 19399 X

No. of pos.	Mounting style M3	Part Number
09 / 09	Threaded insert	163 A 15319 X
15 / 15	Threaded insert	163 A 15329 X
25 / 25	Threaded insert	163 A 15339 X
37 / 37	Threaded insert	163 A 15349 X
09 / 09	Front spacer	163 A 15479 X
15 / 15	Front spacer	163 A 15489 X
25 / 25	Front spacer	163 A 15499 X
37 / 37	Front spacer	163 A 15509 X
09 / 09	PCB clip / Threaded insert	163 A 20089 X
15 / 15	PCB clip / Threaded insert	163 A 20099 X
25 / 25	PCB clip / Threaded insert	163 A 20109 X
37 / 37	PCB clip / Threaded insert	163 A 20119 X
09 / 09	PCB clip / Front spacer	163 A 19449 X
15 / 15	PCB clip / Front spacer	163 A 19459 X
25 / 25	PCB clip / Front spacer	163 A 19469 X
37 / 37	PCB clip / Front spacer	163 A 19479 X

PCB layout: Kat1U6A

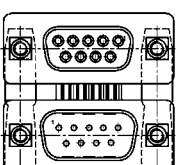


Variation:  
socket upper –  
socket bottom

No. of pos.	Mounting style 4-40 UNC	Part Number
09 / 09	Threaded insert	164 A 15609 X
15 / 15	Threaded insert	164 A 15619 X
25 / 25	Threaded insert	164 A 15629 X
37 / 37	Threaded insert	164 A 15639 X
09 / 09	Front spacer	164 A 15769 X
15 / 15	Front spacer	164 A 15779 X
25 / 25	Front spacer	164 A 15789 X
37 / 37	Front spacer	164 A 15799 X
09 / 09	PCB clip / Threaded insert	164 A 20409 X
15 / 15	PCB clip / Threaded insert	164 A 20419 X
25 / 25	PCB clip / Threaded insert	164 A 20429 X
37 / 37	PCB clip / Threaded insert	164 A 20439 X
09 / 09	PCB clip / Front spacer	164 A 19759 X
15 / 15	PCB clip / Front spacer	164 A 19769 X
25 / 25	PCB clip / Front spacer	164 A 19779 X
37 / 37	PCB clip / Front spacer	164 A 19789 X

No. of pos.	Mounting style M3	Part Number
09 / 09	Threaded insert	164 A 15689 X
15 / 15	Threaded insert	164 A 15699 X
25 / 25	Threaded insert	164 A 15709 X
37 / 37	Threaded insert	164 A 15719 X
09 / 09	Front spacer	164 A 15849 X
15 / 15	Front spacer	164 A 15859 X
25 / 25	Front spacer	164 A 15869 X
37 / 37	Front spacer	164 A 15879 X
09 / 09	PCB clip / Threaded insert	164 A 20489 X
15 / 15	PCB clip / Threaded insert	164 A 20499 X
25 / 25	PCB clip / Threaded insert	164 A 20509 X
37 / 37	PCB clip / Threaded insert	164 A 20519 X
09 / 09	PCB clip / Front spacer	164 A 19839 X
15 / 15	PCB clip / Front spacer	164 A 19849 X
25 / 25	PCB clip / Front spacer	164 A 19859 X
37 / 37	PCB clip / Front spacer	164 A 19869 X

PCB layout: Kat1U6A



Variation:  
socket upper –  
plug bottom

No. of pos.	Mounting style 4-40 UNC	Part Number
09 / 09	Threaded insert	164 A 15649 X
15 / 15	Threaded insert	164 A 15659 X
25 / 25	Threaded insert	164 A 15669 X
37 / 37	Threaded insert	164 A 15679 X
09 / 09	Front spacer	164 A 15809 X
15 / 15	Front spacer	164 A 15819 X
25 / 25	Front spacer	164 A 15829 X
37 / 37	Front spacer	164 A 15839 X
09 / 09	PCB clip / Threaded insert	164 A 20449 X
15 / 15	PCB clip / Threaded insert	164 A 20459 X
25 / 25	PCB clip / Threaded insert	164 A 20469 X
37 / 37	PCB clip / Threaded insert	164 A 20479 X
09 / 09	PCB clip / Front spacer	164 A 19799 X
15 / 15	PCB clip / Front spacer	164 A 19809 X
25 / 25	PCB clip / Front spacer	164 A 19819 X
37 / 37	PCB clip / Front spacer	164 A 19829 X

No. of pos.	Mounting style M3	Part Number
09 / 09	Threaded insert	164 A 15729 X
15 / 15	Threaded insert	164 A 15739 X
25 / 25	Threaded insert	164 A 15749 X
37 / 37	Threaded insert	164 A 15759 X
09 / 09	Front spacer	164 A 15889 X
15 / 15	Front spacer	164 A 15899 X
25 / 25	Front spacer	164 A 15909 X
37 / 37	Front spacer	164 A 15919 X
09 / 09	PCB clip / Threaded insert	164 A 20529 X
15 / 15	PCB clip / Threaded insert	164 A 20539 X
25 / 25	PCB clip / Threaded insert	164 A 20549 X
37 / 37	PCB clip / Threaded insert	164 A 20559 X
09 / 09	PCB clip / Front spacer	164 A 19879 X
15 / 15	PCB clip / Front spacer	164 A 19889 X
25 / 25	PCB clip / Front spacer	164 A 19899 X
37 / 37	PCB clip / Front spacer	164 A 19909 X

PCB clip .122"/3.1 ± .004"/0.10 mm hole diameter and .063"/1.6 mm circuit board thickness

## X-ON Electronics

Largest Supplier of Electrical and Electronic Components

*Click to view similar products for [D-Sub Dualport Connectors](#) category:*

*Click to view products by [CONEC](#) manufacturer:*

Other Similar products are found below :

[787672-3](#) [164A15909X](#) [K42X-E15S/S-A4NJ](#) [K42X-E9SS-A4NJ](#) [242A14060X](#) [164A15819X](#) [DLS2SS5AN21X](#) [241A22450X](#) [242A14180X](#)  
[241A14190X](#) [DLS4SS5AN21X](#) [178-037-513R491](#) [178-037-613R491](#) [178-009-413R571](#) [178-009-513R571](#) [178-009-613R491](#) [178-009-613R691](#) [178-015-513R571](#) [178-015-613R571](#) [178-025-513R571](#) [179-009-513R571](#) [179-009-613R571](#) [179-025-513R571](#) [179-037-513R571](#)  
[K42X-E15S/S-A4N](#) [K42X-E9S/P-A4N](#) [L17H2220131](#) [178-015-513R491](#) [178-025-613R481](#) [178-025-613R571](#) [178-037-513R571](#) [178-037-513R671](#) [L17H2220120](#) [L17H2ED0130](#) [L17H1440130](#) [L17H1770231](#) [L17H2110120](#) [L17H2440120TM](#) [L17H1431134](#) [L17H1212130](#)  
[L17H2212120](#) [L17H1222134](#) [L17H2662120TM](#) [L17H2550120](#) [L17H2440120](#) [L17H2440121](#) [L17H1120134](#) [L17H2120120](#) [L17H2120230](#)  
[L17H1440134](#)