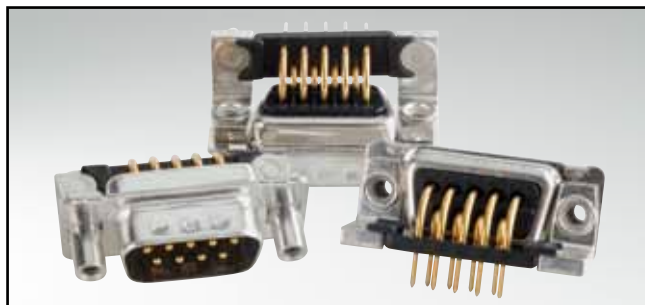


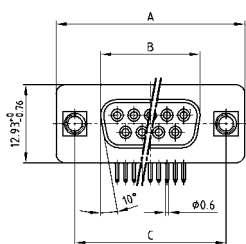
D-SUB STANDARD

Solder pin – Angled – .318" / 7.19 mm – Precision machined contacts – Metal bracket



RoHS compliant – CSA listed, File No.: LR 115000-1 – UL listed, File No.: E202784

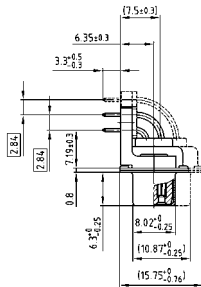
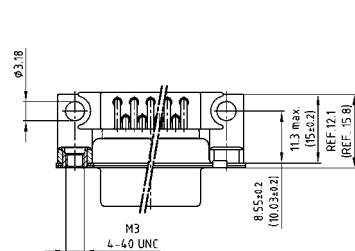
SOCKET CONNECTOR



No. of pos.	A -0.76	B -0.25	C
09	31.19	16.46	25.00 +0.12
15	39.52	24.79	33.30 +0.15 -0.10
25	53.42	38.50	47.04 ±0.13
37	69.70	54.96	63.50 ±0.13
50	67.31	52.55	61.10 +0.14 -0.11

PCB layout: Kat1kGEA

Mounting style: Threaded insert

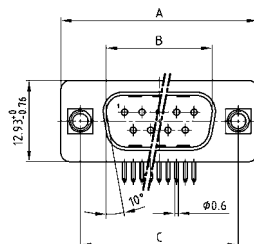


50 pos. = Dim. in (_)

DESCRIPTION

- Mounting styles:
 - with mounting bracket and 4-40 UNC or M3 threaded insert
 - with mounting bracket and 4-40 UNC or M3 front spacer
 - with mounting bracket, PCB clip and 4-40 UNC or M3 threaded insert
 - with mounting bracket, PCB clip and 4-40 UNC or M3 front spacer
- Quality class 3 (also available in quality class 1)
- Shell: Steel tin plated (brass tin plated or stainless steel available on request)

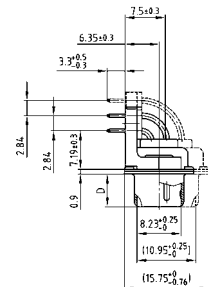
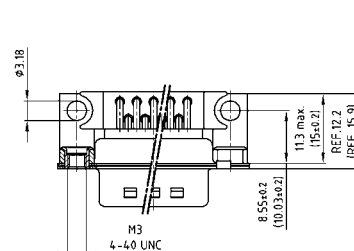
PLUG CONNECTOR



No. of pos.	A -0.76	B -0.25	C	D -0.3
09	31.19	16.79	25.00 +0.12	6.12
15	39.52	25.12	33.30 +0.15 -0.10	6.12
25	53.42	38.84	47.04 ±0.13	5.99
37	69.70	55.30	63.50 ±0.13	5.99
50	67.31	52.68	61.10 +0.14 -0.11	5.99

PCB layout: Kat1kGFA

Mounting style: Threaded insert



50 pos. = Dim. in (_)

ORDER DATA

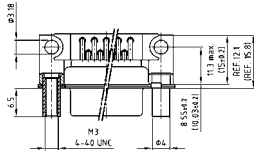
SOCKET CONNECTOR		
No. of pos.	Mounting style	Part Number
09	4-40 UNC Threaded insert	164 A 11519 X
15	4-40 UNC Threaded insert	164 A 11529 X
25	4-40 UNC Threaded insert	164 A 11539 X
37	4-40 UNC Threaded insert	164 A 11549 X
50	4-40 UNC Threaded insert	164 A 18969 X
09	M3 Threaded insert	164 A 13439 X
15	M3 Threaded insert	164 A 13449 X
25	M3 Threaded insert	164 A 13459 X
37	M3 Threaded insert	164 A 13469 X
50	M3 Threaded insert	164 A 18979 X

PLUG CONNECTOR		
No. of pos.	Mounting style	Part Number
09	4-40 UNC Threaded insert	163 A 13069 X
15	4-40 UNC Threaded insert	163 A 13079 X
25	4-40 UNC Threaded insert	163 A 13089 X
37	4-40 UNC Threaded insert	163 A 13099 X
50	4-40 UNC Threaded insert	163 A 18549 X
09	M3 Threaded insert	163 A 14959 X
15	M3 Threaded insert	163 A 14969 X
25	M3 Threaded insert	163 A 14979 X
37	M3 Threaded insert	163 A 14989 X
50	M3 Threaded insert	163 A 18559 X

D-SUB STANDARD – MOUNTING STYLES

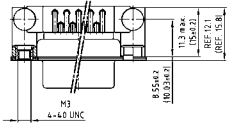
Solder pin – Angled – .318" / 7.19 mm – Precision machined contacts – Metal bracket

ORDER DATA



SOCKET CONNECTOR		
No. of pos.	Mounting style	Part Number
09	4-40 UNC Front spacer	164 A 16929 X
15	4-40 UNC Front spacer	164 A 16939 X
25	4-40 UNC Front spacer	164 A 16949 X
37	4-40 UNC Front spacer	164 A 16959 X
50	4-40 UNC Front spacer	164 A 19019 X
09	M3 Front spacer	164 A 16969 X
15	M3 Front spacer	164 A 16979 X
25	M3 Front spacer	164 A 16989 X
37	M3 Front spacer	164 A 16999 X
50	M3 Front spacer	164 A 19029 X

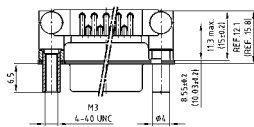
PLUG CONNECTOR		
No. of pos.	Mounting style	Part Number
09	4-40 UNC Front spacer	163 A 16519 X
15	4-40 UNC Front spacer	163 A 16529 X
25	4-40 UNC Front spacer	163 A 16539 X
37	4-40 UNC Front spacer	163 A 16549 X
50	4-40 UNC Front spacer	163 A 18589 X
09	M3 Front spacer	163 A 16559 X
15	M3 Front spacer	163 A 16569 X
25	M3 Front spacer	163 A 16579 X
37	M3 Front spacer	163 A 16589 X
50	M3 Front spacer	163 A 18599 X



SOCKET CONNECTOR		
No. of pos.	Mounting style	Part Number
09	PCB clip / 4-40 UNC Threaded insert	164 A 17939 X
15	PCB clip / 4-40 UNC Threaded insert	164 A 17949 X
25	PCB clip / 4-40 UNC Threaded insert	164 A 17959 X
37	PCB clip / 4-40 UNC Threaded insert	164 A 17969 X
50	PCB clip / 4-40 UNC Threaded insert	164 A 18989 X
09	PCB clip / M3 Threaded insert	164 A 17979 X
15	PCB clip / M3 Threaded insert	164 A 17989 X
25	PCB clip / M3 Threaded insert	164 A 17999 X
37	PCB clip / M3 Threaded insert	164 A 18009 X
50	PCB clip / M3 Threaded insert	164 A 18999 X

PLUG CONNECTOR		
No. of pos.	Mounting style	Part Number
09	PCB clip / 4-40 UNC Threaded insert	163 A 17529 X
15	PCB clip / 4-40 UNC Threaded insert	163 A 17539 X
25	PCB clip / 4-40 UNC Threaded insert	163 A 17549 X
37	PCB clip / 4-40 UNC Threaded insert	163 A 17559 X
50	PCB clip / 4-40 UNC Threaded insert	163 A 18569 X
09	PCB clip / M3 Threaded insert	163 A 17569 X
15	PCB clip / M3 Threaded insert	163 A 17579 X
25	PCB clip / M3 Threaded insert	163 A 17589 X
37	PCB clip / M3 Threaded insert	163 A 17599 X
50	PCB clip / M3 Threaded insert	163 A 18579 X

PCB clip .122" / 3.1 ± .004" / 0.10 mm hole diameter and .063" / 1.6 mm circuit board thickness



SOCKET CONNECTOR		
No. of pos.	Mounting style	Part Number
09	PCB clip / 4-40 UNC Front spacer	164 A 19039 X
15	PCB clip / 4-40 UNC Front spacer	164 A 19049 X
25	PCB clip / 4-40 UNC Front spacer	164 A 19059 X
37	PCB clip / 4-40 UNC Front spacer	164 A 19069 X
50	PCB clip / 4-40 UNC Front spacer	164 A 19079 X
09	PCB clip / M3 Front spacer	164 A 19089 X
15	PCB clip / M3 Front spacer	164 A 19099 X
25	PCB clip / M3 Front spacer	164 A 19109 X
37	PCB clip / M3 Front spacer	164 A 19119 X
50	PCB clip / M3 Front spacer	164 A 19129 X

PLUG CONNECTOR		
No. of pos.	Mounting style	Part Number
09	PCB clip / 4-40 UNC Front spacer	163 A 18609 X
15	PCB clip / 4-40 UNC Front spacer	163 A 18619 X
25	PCB clip / 4-40 UNC Front spacer	163 A 18629 X
37	PCB clip / 4-40 UNC Front spacer	163 A 18639 X
50	PCB clip / 4-40 UNC Front spacer	163 A 18649 X
09	PCB clip / M3 Front spacer	163 A 18659 X
15	PCB clip / M3 Front spacer	163 A 18669 X
25	PCB clip / M3 Front spacer	163 A 18679 X
37	PCB clip / M3 Front spacer	163 A 18689 X
50	PCB clip / M3 Front spacer	163 A 18699 X

PCB clip .122" / 3.1 ± .004" / 0.10 mm hole diameter and .063" / 1.6 mm circuit board thickness

PCB layout: Kat1kGEA

PCB layout: Kat1kGFA

X-ON Electronics

Largest Supplier of Electrical and Electronic Components

Click to view similar products for [D-Sub High Density Connectors](#) category:

Click to view products by [CONEC](#) manufacturer:

Other Similar products are found below :

[97-3250-11](#) [163A17089X](#) [164A17199X](#) [164C18629X](#) [L717HDB44POL2R210](#) [L717HDEH15POL2](#) [L777HDE15P](#) [L77HDE15SC309](#)
[163A16759X](#) [163A16839X](#) [163A16989X](#) [163A17079X](#) [164A17329X](#) [164A18219X](#) [241A16440X](#) [241A16550X](#) [241A16680X](#)
[241A20810X](#) [241A25740X](#) [CT25-44P](#) [MDBE15PE766](#) [L177HDE15SOL2RM23](#) [L177HRC62SVFM](#) [L177HRCG62S](#)
[L717HDEG15POL2RM5](#) [L77HDA26SVF](#) [L77HDE15SD1CO](#) [L77HDEH15SOL2RM832](#) [DAMA-15S-WS](#) [443895-3](#) [106698-1](#) [280-](#)
[012K2C](#) [DBMV13H3SNA197](#) [L177HRB44S](#) [164A17039X](#) [09562004701510](#) [L777HRC62P](#) [241A17960X](#) [164A18269X](#) [280-019S1S9MEN](#)
[L777HDEG15P](#) [280-018P3S25MEGN](#) [206504-2](#) [40-9415HDSP](#) [40-9515HDSP](#) [2057140-1](#) [C115370-6002](#) [DFMA104SNMBFR172FR022](#)
[HDC9F200E2S](#) [L717HDAG26POL2RM8](#)