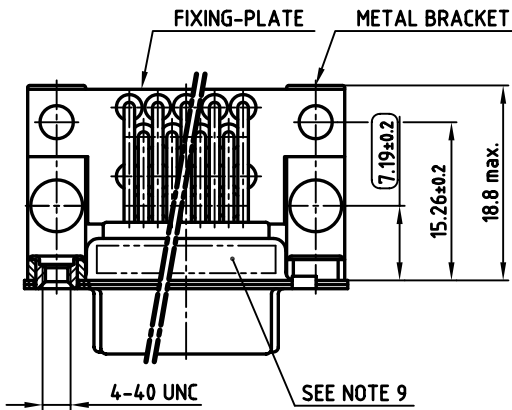
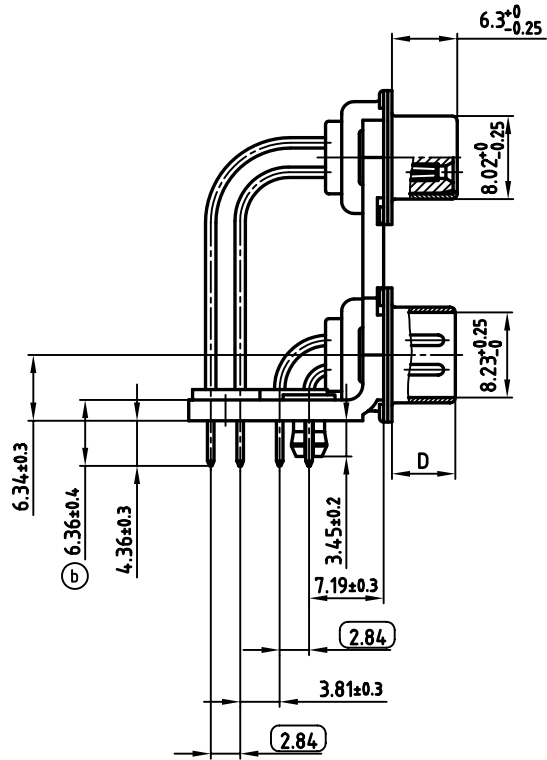
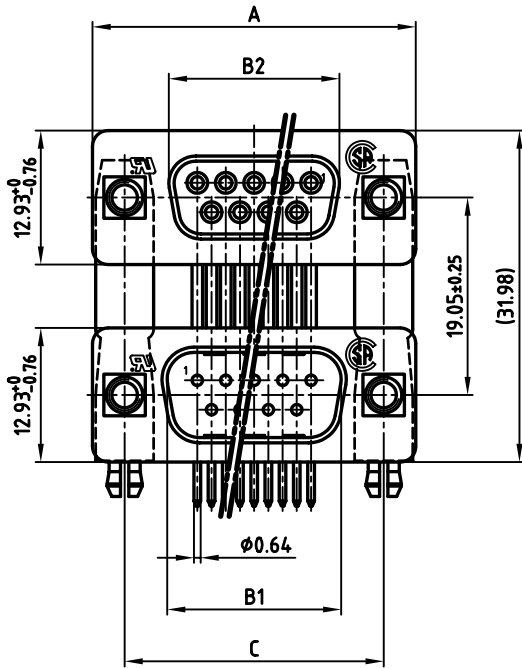


used for: D-SUB Dual Port

POS.	A <sup>-0.76</sup>	B1 <sup>+0.25</sup>	B2 <sup>-0.25</sup>	C	D <sup>-0.3</sup>
2x 9	31.19	16.79	16.46	25.00 <sup>+0.12 -0.13</sup>	6.12
2x15	39.52	25.12	24.79	33.30 <sup>+0.15 -0.1</sup>	6.12
2x25	53.42	38.84	38.50	47.04 <sup>±0.13</sup>	5.99
2x37	69.70	55.30	54.96	63.50 <sup>±0.13</sup>	5.99

PLATING	2 x 9pos.	2 x 15pos.	2 x 25pos.	2 x 37pos.
8µ" HARD GOLD OVER min. 50µ" NICKEL	164A19959X	164A19969X	164A19979X	164A19989X
30µ" HARD GOLD OVER min. 50µ" NICKEL	164C19959X	164C19969X	164C19979X	164C19989X



**NOTES:**

- METALSHELLS: STEEL; min. 320µ" TIN
- INSULATORS: PBT GF UL 94 V-0, BLACK
- CONTACTS: COPPER ALLOY  
PLATING: SEE TABLE
- METAL BRACKET: STEEL; min. 320µ" TIN over 80µ" NICKEL
- THREADED INSERT: COPPER ALLOY; min. 200µ" TIN over 80µ" NICKEL
- FIXING-PLATE: PBT GF UL 94 V-0, BLACK
- P.C.B. HOLE DRILLINGS ON SHEET 2 + 3
- MAXIMUM TORQUE VALUE FOR THREAD: 6" LBS
- CONNECTOR IS PART MARKED: PART-NO. CONEC Y/WW
- = CRITICAL DIMENSION

APPROVAL # FREIGABE # DEBLOCAGE # AUTORIZACION # APPROVAL

CUSTOMER APPROVAL DATE:

NAME: \_\_\_\_\_ TITEL: \_\_\_\_\_

COMPANY NAME: \_\_\_\_\_

APPROVAL # FREIGABE # DEBLOCAGE # AUTORIZACION # APPROVAL

THIS DRAWING MAY NOT BE COPIED OR REPRODUCED IN ANY WAY, AND MAY NOT BE PASSED ON TO A THIRD PARTY, WITHOUT WRITTEN PERMISSION. OWNERSHIP AND COPYRIGHT OF CONEC Gmbh DO NOT ALTER CAD DRAWING BY HAND

rev.	description	date	name
1 x b	Ä 1919	09.01.2004	Lehmen

tolerance	scale:
	2:1
material:	SEE NOTES
title:	<b>DUAL PORT 19.05mm</b> FEMALE / MALE 2x9pos. - 2x37pos. with threaded insert and clip
dwg no:	AutoCAD 2000 DIN-A
part no:	<b>16K1A1072</b>
	SEE TABLE

6

5

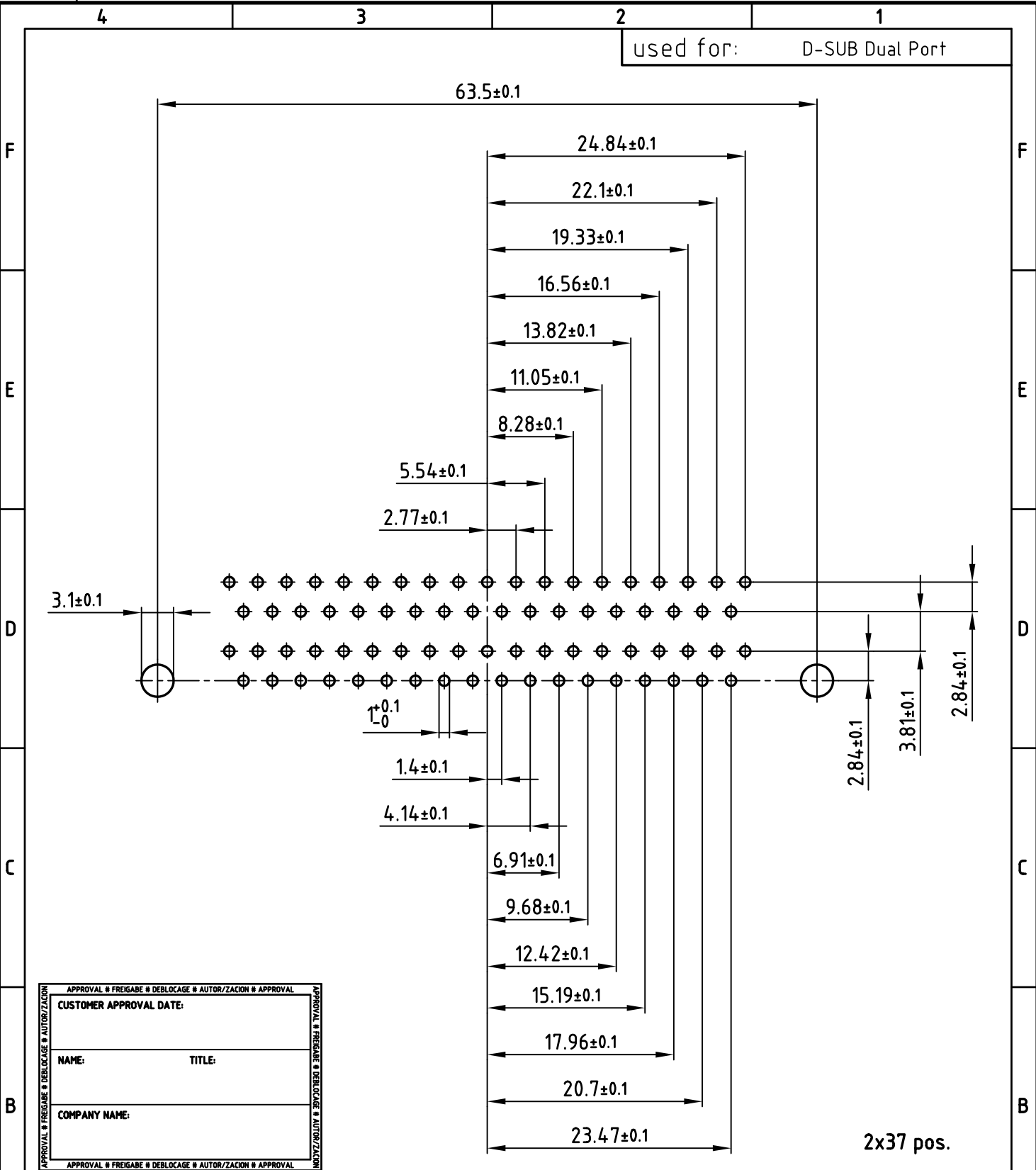
4

3

2

1

used for: D-SUB Dual Port



APPROVAL # FREIGABE # DEBLOCAGE # AUTOR/ZACION # APPROVAL	
CUSTOMER APPROVAL DATE:	
NAME:	TITLE:
COMPANY NAME:	
APPROVAL # FREIGABE # DEBLOCAGE # AUTOR/ZACION # APPROVAL	

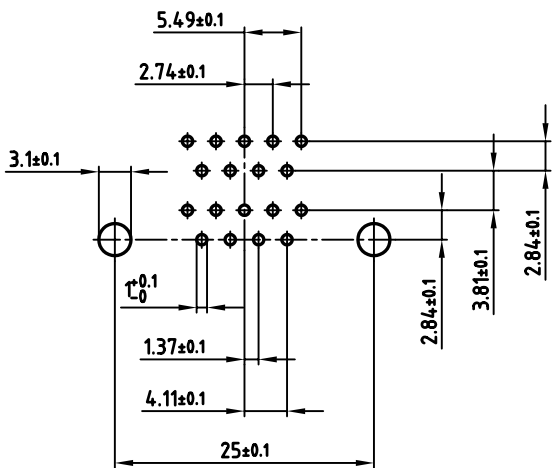
THIS DRAWING MAY NOT BE COPIED OR REPRODUCED IN ANY WAY, AND MAY NOT BE PASSED ON TO A THIRD PARTY WITHOUT WRITTEN PERMISSION.  
 OWNERSHIP AND COPYRIGHT OF CONEC GmbH  
 DO NOT ALTER CAD DRAWING BY HAND

tolerance	dim. in mm	
2003	date	name
drawn	19.12.	Lehmenkühler
appd.	19.12.	Mickenbecker
norm	DIN 41652	
d-old		
rev.	description	date

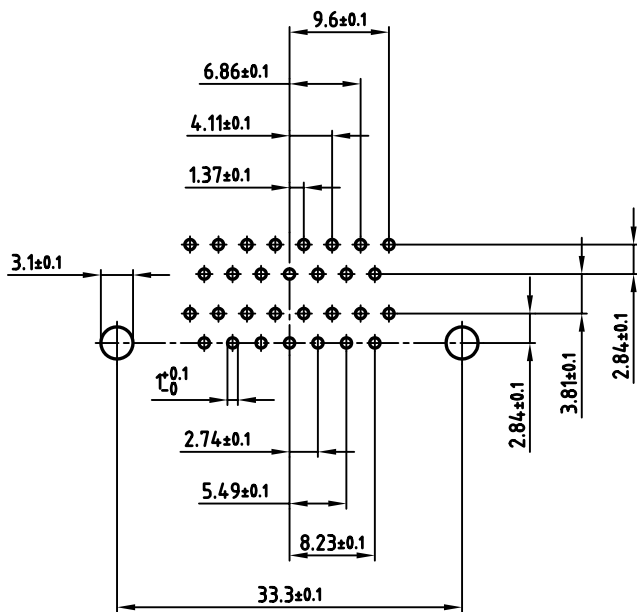


scale:	2:1	
material:	SEE SHEET 1	
title:	P.C.B. HOLE DRILLINGS DUAL PORT 19.05mm FEMALE / MALE with threaded insert and clip	
dwg no:	AutoCAD 2000	DIN-A
	16K1A1072	4
		sh:3/3
part no:	SEE SHEET 1	

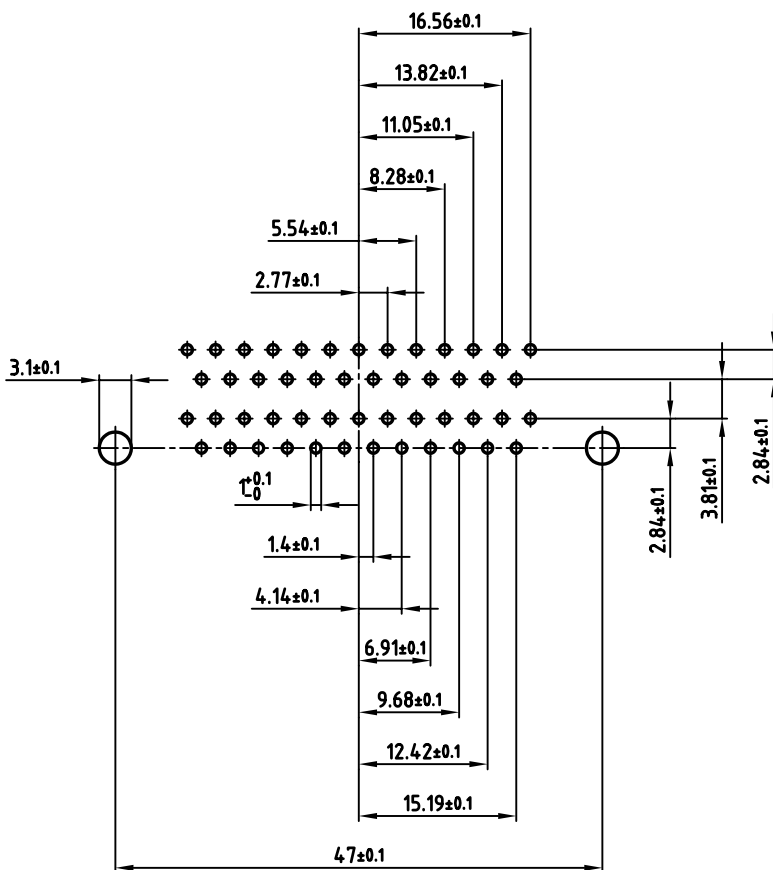
used for: D-SUB Dual Port



2x9 pos.



2x15 pos.



2x25 pos.

APPROVAL # FREIGABE # DEBLOCAGE # AUTORIZACION # APPROVAL

CUSTOMER APPROVAL DATE:

NAME: \_\_\_\_\_ TITEL: \_\_\_\_\_

COMPANY NAME: \_\_\_\_\_

APPROVAL # FREIGABE # DEBLOCAGE # AUTORIZACION # APPROVAL

THIS DRAWING MAY NOT BE COPIED OR REPRODUCED IN ANY WAY, AND MAY NOT BE PASSED ON TO A THIRD PARTY, WITHOUT WRITTEN PERMISSION. OWNERSHIP AND COPYRIGHT OF CONEC GmbH DO NOT ALTER CAD DRAWING BY HAND

rev.	description	date	name

tolerance	
2003	date
drawn	19.12. Lehmenkühler
appd.	19.12. Mickenbecker
norm	DIN 41652
d-old	

scale: 2:1

material: SEE SHEET 1

title: P.C.B. HOLE DRILLINGS  
DUAL PORT 19.05mm FEMALE / MALE  
with threaded insert and clip

dwg no: AutoCAD 2000 DIN-A  
16K1A1072 3 sh:2/3

part no: SEE SHEET 1

## X-ON Electronics

Largest Supplier of Electrical and Electronic Components

*Click to view similar products for [D-Sub Standard Connectors](#) category:*

*Click to view products by [CONEC](#) manufacturer:*

Other Similar products are found below :

[56F711-015](#) [012-9507-004](#) [LV242999-142T12](#) [015-0341-000](#) [015-0349-000](#) [015-0372-005](#) [015-0372-008](#) [015-8755-001](#) [020419-0104](#) [012-0467-000](#) [012-0515-000](#) [012-9507-034](#) [012-9507-114](#) [020745-0008](#) [609-25P](#) [M24308/2-23Z](#) [M24308315F](#) [CT2-14S-2PCA34](#) [CT2-18-11PCAU](#) [CT2-36-15SC](#) [CT6-14S-2SC](#) [CT6E14SA7SC](#) [CT6E22-14PC](#) [CT6E22-14PS](#) [CT6E22-22PS](#) [M83513/01-FC](#) [M85049/48-3-2F](#) [6STD09PCM99B70X](#) [6STD09SCM99B30X](#) [6STD09SCT99S40X](#) [6STD15PCT99S40X](#) [6STD15SCM99B30X](#) [6STD15SCT99S40X](#) [6STF09PCM05B70X](#) [7-135760-9](#) [MC11E-10-6SN](#) [747552-3](#) [MD1-21PS](#) [MDM-15SCBRM7-F222](#) [MDM96517-699](#) [MDM96521-744](#) [MDVB1-21SL1](#) [MIK0-1-7SH003](#) [MIKQ6-7SH076](#) [MIKQ7-7PH077](#) [MIKQ7-7PH11](#) [MIKQ7-7PH32](#) [MIKQ9-7PH003](#) [MJSV-28SL61](#) [MKJ4A1F14-55S](#)