

D-SUB STANDARD – DUAL PORT

Solder pin – Angled – Precision machined contacts – .750" / 19.05 mm Connector spacing



RoHS compliant – CSA listed, File No.: LR 115000-1 – UL listed, File No.: E202784

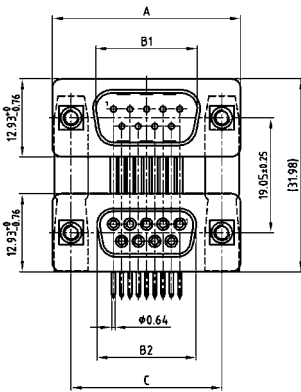
DESCRIPTION

- Variations: pin – pin; socket – socket; pin – socket
- Mounting styles:
 - with mounting bracket and 4-40 UNC or M3 threaded insert
 - with mounting bracket and 4-40 UNC or M3 front spacer
 - with mounting bracket, PCB clip and 4-40 UNC or M3 threaded insert
 - with mounting bracket, PCB clip and 4-40 UNC or M3 front spacer
- Quality class 3 (also available in quality class 1)
- Shell: Steel tin plated (brass tin plated or stainless steel available on request)

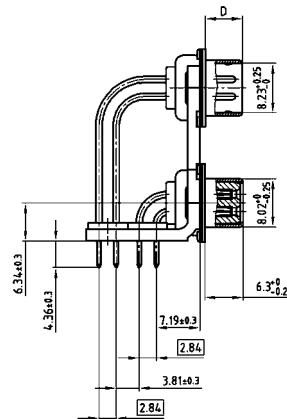
PRODUCT DRAWING

No. of pos.	A -0.76	B1 +0.25	B2 -0.25	C	D -0.30
2X 09	31.19	16.79	16.46	25.00 +0.12	6.12
2X 15	39.52	25.12	24.79	33.30 +0.15 +0.10	6.12
2X 25	53.42	38.84	38.50	47.04 +0.13	5.99
2X 37	69.70	55.30	54.96	63.50 +0.13	5.99

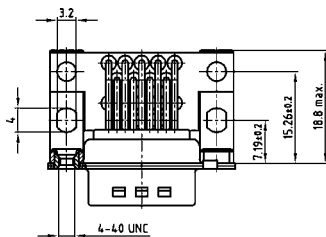
Graphically representation of only one variant!



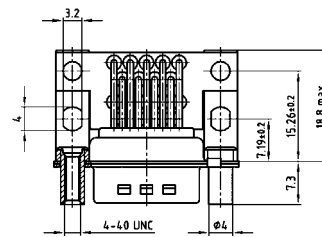
Mounting style: Threaded insert



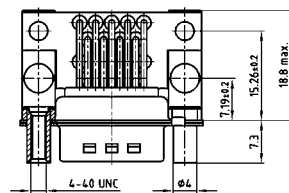
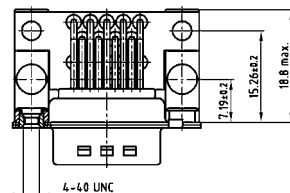
Mounting style: Front spacer



Mounting style: PCB clip, threaded insert



Mounting style: PCB clip, front spacer

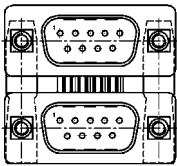


D-SUB STANDARD – DUAL PORT VARIATIONS

Solder pin – Angled – Precision machined contacts – .750" / 19.05 mm Connector spacing

ORDER DATA

PCB layout: Kat1iU5A

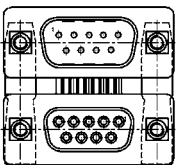


Variation:
plug upper –
plug bottom

No. of pos.	Mounting style 4-40 UNC	Part Number
09 / 09	Threaded insert	163 A 15519 X
15 / 15	Threaded insert	163 A 15529 X
25 / 25	Threaded insert	163 A 15539 X
37 / 37	Threaded insert	163 A 15549 X
09 / 09	Front spacer	163 A 15679 X
15 / 15	Front spacer	163 A 15689 X
25 / 25	Front spacer	163 A 15699 X
37 / 37	Front spacer	163 A 15709 X
09 / 09	PCB clip / Threaded insert	163 A 19489 X
15 / 15	PCB clip / Threaded insert	163 A 19499 X
25 / 25	PCB clip / Threaded insert	163 A 19509 X
37 / 37	PCB clip / Threaded insert	163 A 19519 X
09 / 09	PCB clip / Front spacer	163 A 19649 X
15 / 15	PCB clip / Front spacer	163 A 19659 X
25 / 25	PCB clip / Front spacer	163 A 19669 X
37 / 37	PCB clip / Front spacer	163 A 19679 X

No. of pos.	Mounting style M3	Part Number
09 / 09	Threaded insert	163 A 15599 X
15 / 15	Threaded insert	163 A 15609 X
25 / 25	Threaded insert	163 A 15619 X
37 / 37	Threaded insert	163 A 15629 X
09 / 09	Front spacer	163 A 15759 X
15 / 15	Front spacer	163 A 15769 X
25 / 25	Front spacer	163 A 15779 X
37 / 37	Front spacer	163 A 15789 X
09 / 09	PCB clip / Threaded insert	163 A 19569 X
15 / 15	PCB clip / Threaded insert	163 A 19579 X
25 / 25	PCB clip / Threaded insert	163 A 19589 X
37 / 37	PCB clip / Threaded insert	163 A 19599 X
09 / 09	PCB clip / Front spacer	163 A 19729 X
15 / 15	PCB clip / Front spacer	163 A 19739 X
25 / 25	PCB clip / Front spacer	163 A 19749 X
37 / 37	PCB clip / Front spacer	163 A 19759 X

PCB layout: Kat1iU6A

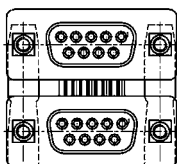


Variation:
plug upper –
socket bottom

No. of pos.	Mounting style 4-40 UNC	Part Number
09 / 09	Threaded insert	163 A 15559 X
15 / 15	Threaded insert	163 A 15569 X
25 / 25	Threaded insert	163 A 15579 X
37 / 37	Threaded insert	163 A 15589 X
09 / 09	Front spacer	163 A 15719 X
15 / 15	Front spacer	163 A 15729 X
25 / 25	Front spacer	163 A 15739 X
37 / 37	Front spacer	163 A 15749 X
09 / 09	PCB clip / Threaded insert	163 A 19529 X
15 / 15	PCB clip / Threaded insert	163 A 19539 X
25 / 25	PCB clip / Threaded insert	163 A 19549 X
37 / 37	PCB clip / Threaded insert	163 A 19559 X
09 / 09	PCB clip / Front spacer	163 A 19689 X
15 / 15	PCB clip / Front spacer	163 A 19699 X
25 / 25	PCB clip / Front spacer	163 A 19709 X
37 / 37	PCB clip / Front spacer	163 A 19719 X

No. of pos.	Mounting style M3	Part Number
09 / 09	Threaded insert	163 A 15639 X
15 / 15	Threaded insert	163 A 15649 X
25 / 25	Threaded insert	163 A 15659 X
37 / 37	Threaded insert	163 A 15669 X
09 / 09	Front spacer	163 A 15799 X
15 / 15	Front spacer	163 A 15809 X
25 / 25	Front spacer	163 A 15819 X
37 / 37	Front spacer	163 A 15829 X
09 / 09	PCB clip / Threaded insert	163 A 19609 X
15 / 15	PCB clip / Threaded insert	163 A 19619 X
25 / 25	PCB clip / Threaded insert	163 A 19629 X
37 / 37	PCB clip / Threaded insert	163 A 19639 X
09 / 09	PCB clip / Front spacer	163 A 19769 X
15 / 15	PCB clip / Front spacer	163 A 19779 X
25 / 25	PCB clip / Front spacer	163 A 19789 X
37 / 37	PCB clip / Front spacer	163 A 19799 X

PCB layout: Kat1iU6A

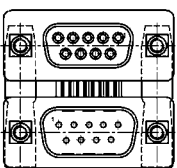


Variation:
socket upper –
socket bottom

No. of pos.	Mounting style 4-40 UNC	Part Number
09 / 09	Threaded insert	164 A 15929 X
15 / 15	Threaded insert	164 A 15939 X
25 / 25	Threaded insert	164 A 15949 X
37 / 37	Threaded insert	164 A 15959 X
09 / 09	Front spacer	164 A 16089 X
15 / 15	Front spacer	164 A 16099 X
25 / 25	Front spacer	164 A 16109 X
37 / 37	Front spacer	164 A 16119 X
09 / 09	PCB clip / Threaded insert	164 A 19919 X
15 / 15	PCB clip / Threaded insert	164 A 19929 X
25 / 25	PCB clip / Threaded insert	164 A 19939 X
37 / 37	PCB clip / Threaded insert	164 A 19949 X
09 / 09	PCB clip / Front spacer	164 A 20079 X
15 / 15	PCB clip / Front spacer	164 A 20089 X
25 / 25	PCB clip / Front spacer	164 A 20099 X
37 / 37	PCB clip / Front spacer	164 A 20109 X

No. of pos.	Mounting style M3	Part Number
09 / 09	Threaded insert	164 A 16009 X
15 / 15	Threaded insert	164 A 16019 X
25 / 25	Threaded insert	164 A 16029 X
37 / 37	Threaded insert	164 A 16039 X
09 / 09	Front spacer	164 A 16169 X
15 / 15	Front spacer	164 A 16179 X
25 / 25	Front spacer	164 A 16189 X
37 / 37	Front spacer	164 A 16199 X
09 / 09	PCB clip / Threaded insert	164 A 19999 X
15 / 15	PCB clip / Threaded insert	164 A 20009 X
25 / 25	PCB clip / Threaded insert	164 A 20019 X
37 / 37	PCB clip / Threaded insert	164 A 20029 X
09 / 09	PCB clip / Front spacer	164 A 20159 X
15 / 15	PCB clip / Front spacer	164 A 20169 X
25 / 25	PCB clip / Front spacer	164 A 20179 X
37 / 37	PCB clip / Front spacer	164 A 20189 X

PCB layout: Kat1iU5A



Variation:
socket upper –
plug bottom

No. of pos.	Mounting style 4-40 UNC	Part Number
09 / 09	Threaded insert	164 A 15969 X
15 / 15	Threaded insert	164 A 15979 X
25 / 25	Threaded insert	164 A 15989 X
37 / 37	Threaded insert	164 A 15999 X
09 / 09	Front spacer	164 A 16129 X
15 / 15	Front spacer	164 A 16139 X
25 / 25	Front spacer	164 A 16149 X
37 / 37	Front spacer	164 A 16159 X
09 / 09	PCB clip / Threaded insert	164 A 19959 X
15 / 15	PCB clip / Threaded insert	164 A 19969 X
25 / 25	PCB clip / Threaded insert	164 A 19979 X
37 / 37	PCB clip / Threaded insert	164 A 19989 X
09 / 09	PCB clip / Front spacer	164 A 20119 X
15 / 15	PCB clip / Front spacer	164 A 20129 X
25 / 25	PCB clip / Front spacer	164 A 20139 X
37 / 37	PCB clip / Front spacer	164 A 20149 X

No. of pos.	Mounting style M3	Part Number
09 / 09	Threaded insert	164 A 16049 X
15 / 15	Threaded insert	164 A 16059 X
25 / 25	Threaded insert	164 A 16069 X
37 / 37	Threaded insert	164 A 16079 X
09 / 09	Front spacer	164 A 16209 X
15 / 15	Front spacer	164 A 16219 X
25 / 25	Front spacer	164 A 16229 X
37 / 37	Front spacer	164 A 16239 X
09 / 09	PCB clip / Threaded insert	164 A 20039 X
15 / 15	PCB clip / Threaded insert	164 A 20049 X
25 / 25	PCB clip / Threaded insert	164 A 20059 X
37 / 37	PCB clip / Threaded insert	164 A 20069 X
09 / 09	PCB clip / Front spacer	164 A 20199 X
15 / 15	PCB clip / Front spacer	164 A 20209 X
25 / 25	PCB clip / Front spacer	164 A 20219 X
37 / 37	PCB clip / Front spacer	164 A 20229 X

PCB clip .122"/3.1 ± .004"/0.10 mm hole diameter and .063"/1.6 mm circuit board thickness

X-ON Electronics

Largest Supplier of Electrical and Electronic Components

Click to view similar products for [D-Sub Standard Connectors](#) category:

Click to view products by [CONEC](#) manufacturer:

Other Similar products are found below :

[56F711-015](#) [012-9507-004](#) [LV242999-142T12](#) [015-0341-000](#) [015-0349-000](#) [015-0372-005](#) [015-0372-008](#) [015-8755-001](#) [020419-0104](#) [012-0467-000](#) [012-0515-000](#) [012-9507-034](#) [012-9507-114](#) [020745-0008](#) [609-25P](#) [M24308315F](#) [CT2-14S-2PCA34](#) [CT2-18-11PCAU](#) [CT2-36-15SC](#) [CT6-14S-2SC](#) [CT6E14SA7SC](#) [CT6E22-14PC](#) [CT6E22-14PS](#) [CT6E22-22PS](#) [M83513/01-FC](#) [M85049/48-3-2F](#) [6STD09PCM99B70X](#) [6STD09SCM99B30X](#) [6STD09SCT99S40X](#) [6STD15PCT99S40X](#) [6STD15SCM99B30X](#) [6STD15SCT99S40X](#) [6STF09PCM05B70X](#) [7-135760-9](#) [MC11E-10-6SN](#) [747552-3](#) [MD1-21PS](#) [MDM-15SCBRM7-F222](#) [MDM96517-699](#) [MDM96521-744](#) [MDVB1-21SL1](#) [MIK0-1-7SH003](#) [MIKQ6-7SH076](#) [MIKQ7-7PH077](#) [MIKQ7-7PH11](#) [MIKQ7-7PH32](#) [MIKQ9-7PH003](#) [MJSV-28SL61](#) [MKJ4A1F14-55S](#) [8-135760-3](#)