

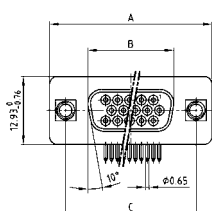
D-SUB HIGH DENSITY

Solder pin – Angled – .350" / 7.98 mm – Precision machined contacts – Plastic bracket



RoHS compliant – CSA listed, File No.: LR 115000-1 – UL listed, File No.: E202784

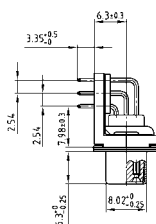
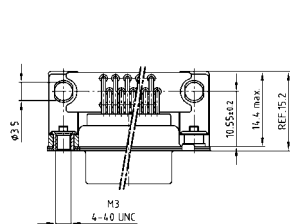
SOCKET CONNECTOR



No. of pos.	A -0.76	B -0.25	C
15	31.19	16.46	25.00 ±0.12
26	39.52	24.79	33.30 ^{+0.15} / _{-0.10}
44	53.42	38.50	47.04 ±0.13
62	69.70	54.96	63.50 ±0.13

PCB layout: Kat1iU1A

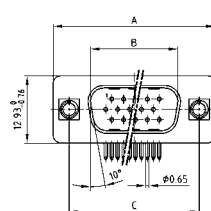
Mounting style: Grounding strap, threaded insert



DESCRIPTION

- Mounting styles:
 - with mounting and grounding strap, 4-40 UNC or M3 threaded insert
 - with mounting and grounding strap, 4-40 UNC or M3 front spacer
 - with mounting bracket, PCB clip and 4-40 UNC or M3 threaded insert
 - with mounting bracket, PCB clip and 4-40 UNC or M3 front spacer
- Quality class 3 (also available in quality class 1)
- Shell: Steel tin plated (brass tin plated or stainless steel available on request)

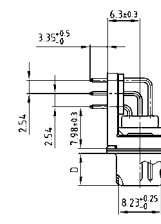
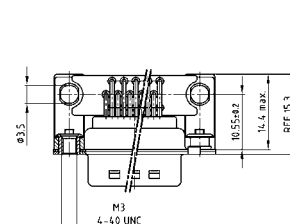
PLUG CONNECTOR



No. of pos.	A -0.76	B +0.25	C	D -0.3
15	31.19	16.79	25.00 ±0.12	6.12
26	39.52	25.12	33.30 ^{+0.15} / _{-0.10}	6.12
44	53.42	38.84	47.04 ±0.13	5.99
62	69.70	55.30	63.50 ±0.13	5.99

PCB layout: Kat1iU2A

Mounting style: Grounding strap, threaded insert



ORDER DATA

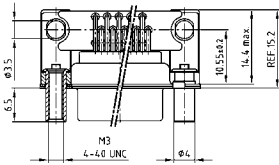
SOCKET CONNECTOR		
No. of pos.	Mounting style	Part Number
15	Grounding strap / 4-40 UNC Threaded insert	164 A 18019 X
26	Grounding strap / 4-40 UNC Threaded insert	164 A 18029 X
44	Grounding strap / 4-40 UNC Threaded insert	164 A 18039 X
62	Grounding strap / 4-40 UNC Threaded insert	164 A 18049 X
15	Grounding strap / M3 Threaded insert	164 A 18059 X
26	Grounding strap / M3 Threaded insert	164 A 18069 X
44	Grounding strap / M3 Threaded insert	164 A 18079 X
62	Grounding strap / M3 Threaded insert	164 A 18089 X

PLUG CONNECTOR		
No. of pos.	Mounting style	Part Number
15	Grounding strap / 4-40 UNC Threaded insert	163 A 17609 X
26	Grounding strap / 4-40 UNC Threaded insert	163 A 17619 X
44	Grounding strap / 4-40 UNC Threaded insert	163 A 17629 X
62	Grounding strap / 4-40 UNC Threaded insert	163 A 17639 X
15	Grounding strap / M3 Threaded insert	163 A 17649 X
26	Grounding strap / M3 Threaded insert	163 A 17659 X
44	Grounding strap / M3 Threaded insert	163 A 17669 X
62	Grounding strap / M3 Threaded insert	163 A 17679 X

D-SUB HIGH DENSITY – MOUNTING STYLES

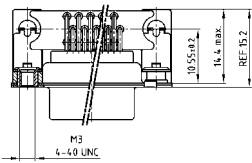
Solder pin – Angled – .350" / 7.98 mm – Precision machined contacts – Plastic bracket

ORDER DATA



SOCKET CONNECTOR		
No. of pos.	Mounting style	Part Number
15	Grounding strap / 4-40 UNC Front spacer	164 A 18099 X
26	Grounding strap / 4-40 UNC Front spacer	164 A 18109 X
44	Grounding strap / 4-40 UNC Front spacer	164 A 18119 X
62	Grounding strap / 4-40 UNC Front spacer	164 A 18129 X
15	Grounding strap / M3 Front spacer	164 A 18139 X
26	Grounding strap / M3 Front spacer	164 A 18149 X
44	Grounding strap / M3 Front spacer	164 A 18159 X
62	Grounding strap / M3 Front spacer	164 A 18169 X

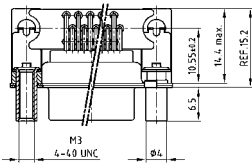
PLUG CONNECTOR		
No. of pos.	Mounting style	Part Number
15	Grounding strap / 4-40 UNC Front spacer	163 A 17689 X
26	Grounding strap / 4-40 UNC Front spacer	163 A 17699 X
44	Grounding strap / 4-40 UNC Front spacer	163 A 17709 X
62	Grounding strap / 4-40 UNC Front spacer	163 A 17719 X
15	Grounding strap / M3 Front spacer	163 A 17729 X
26	Grounding strap / M3 Front spacer	163 A 17739 X
44	Grounding strap / M3 Front spacer	163 A 17749 X
62	Grounding strap / M3 Front spacer	163 A 17759 X



SOCKET CONNECTOR		
No. of pos.	Mounting style	Part Number
15	PCB clip / 4-40 UNC Threaded insert	164 A 20929 X
26	PCB clip / 4-40 UNC Threaded insert	164 A 20939 X
44	PCB clip / 4-40 UNC Threaded insert	164 A 20949 X
62	PCB clip / 4-40 UNC Threaded insert	164 A 20959 X
15	PCB clip / M3 Threaded insert	164 A 20969 X
26	PCB clip / M3 Threaded insert	164 A 20979 X
44	PCB clip / M3 Threaded insert	164 A 20989 X
62	PCB clip / M3 Threaded insert	164 A 20999 X

PLUG CONNECTOR		
No. of pos.	Mounting style	Part Number
15	PCB clip / 4-40 UNC Threaded insert	163 A 20489 X
26	PCB clip / 4-40 UNC Threaded insert	163 A 20499 X
44	PCB clip / 4-40 UNC Threaded insert	163 A 20509 X
62	PCB clip / 4-40 UNC Threaded insert	163 A 20519 X
15	PCB clip / M3 Threaded insert	163 A 20529 X
26	PCB clip / M3 Threaded insert	163 A 20539 X
44	PCB clip / M3 Threaded insert	163 A 20549 X
62	PCB clip / M3 Threaded insert	163 A 20559 X

PCB clip .122" / 3.1 ± .004" / 0.10 mm hole diameter and .063" / 1.6 mm circuit board thickness



SOCKET CONNECTOR		
No. of pos.	Mounting style	Part Number
15	PCB clip / 4-40 UNC Front spacer	164 A 21009 X
26	PCB clip / 4-40 UNC Front spacer	164 A 21019 X
44	PCB clip / 4-40 UNC Front spacer	164 A 21029 X
62	PCB clip / 4-40 UNC Front spacer	164 A 21039 X
15	PCB clip / M3 Front spacer	164 A 21049 X
26	PCB clip / M3 Front spacer	164 A 21059 X
44	PCB clip / M3 Front spacer	164 A 21069 X
62	PCB clip / M3 Front spacer	164 A 21079 X

PLUG CONNECTOR		
No. of pos.	Mounting style	Part Number
15	PCB clip / 4-40 UNC Front spacer	163 A 20569 X
26	PCB clip / 4-40 UNC Front spacer	163 A 20579 X
44	PCB clip / 4-40 UNC Front spacer	163 A 20589 X
62	PCB clip / 4-40 UNC Front spacer	163 A 20599 X
15	PCB clip / M3 Front spacer	163 A 20609 X
26	PCB clip / M3 Front spacer	163 A 20619 X
44	PCB clip / M3 Front spacer	163 A 20629 X
62	PCB clip / M3 Front spacer	163 A 20639 X

PCB clip .122" / 3.1 ± .004" / 0.10 mm hole diameter and .063" / 1.6 mm circuit board thickness

PCB layout: Kat1iU1A

PCB layout: Kat1iU2A

X-ON Electronics

Largest Supplier of Electrical and Electronic Components

Click to view similar products for [D-Sub High Density Connectors](#) category:

Click to view products by [CONEC](#) manufacturer:

Other Similar products are found below :

[97-3250-11](#) [163A17089X](#) [164A17199X](#) [164C18629X](#) [L717HDB44POL2R210](#) [L717HDEH15POL2](#) [L777HDE15P](#) [L77HDE15SC309](#)
[163A16759X](#) [163A16839X](#) [163A16989X](#) [163A17079X](#) [164A17329X](#) [164A18219X](#) [241A16440X](#) [241A16550X](#) [241A16680X](#)
[241A20810X](#) [241A25740X](#) [CT25-44P](#) [MDBE15PE766](#) [L177HDE15SOL2RM23](#) [L177HRC62SVFM](#) [L177HRCG62S](#)
[L717HDEG15POL2RM5](#) [L77HDA26SVF](#) [L77HDE15SD1CO](#) [L77HDEH15SOL2RM832](#) [DAMA-15S-WS](#) [443895-3](#) [106698-1](#) [280-](#)
[012K2C](#) [DBMV13H3SNA197](#) [L177HRB44S](#) [164A17039X](#) [09562004701510](#) [L777HRC62P](#) [241A17960X](#) [164A18269X](#) [280-019S1S9MEN](#)
[L777HDEG15P](#) [280-018P3S25MEGN](#) [206504-2](#) [40-9415HDSP](#) [40-9515HDSP](#) [2057140-1](#) [C115370-6002](#) [DFMA104SNMBFR172FR022](#)
[HDC9F200E2S](#) [L717HDAG26POL2RM8](#)