

- [D-SUB Connectors >](#)
- [IP67 D-SUB Connectors >](#)
- [IP67 RJ45 / USB / Fiber Optic >](#)
- [CONEC Hybrid Connectors >](#)
- [Sensor Actor Line Connectors >](#)
- [PCB Connectors >](#)

Do you have any questions?

We will be pleased to help you.



Mon-Thu. 8am - 4.30 pm

Fri 8 am - 3 pm

+49 2941 765 0

info@conec.de

[Contact form >](#)



M-F 8:30 – 5:00 ET

+1 919 460 8800

info@conec.com

[Contact form >](#)



M-F 8:30 – 5:00 ET

+1 905 790 2200

info@conec.com

[Contact form >](#)



M-F 8:30 – 5:00 ET

+33 0975267217

info@conec.fr

[Formulaire de contact >](#)



+48 0713 744 045

info@conec.pl

[Formularz kontaktowy](#)



+420 577 350 132

info@conec.cz

[Kontaktní formulář](#)



+86 21 663 009 30

info@conec.cn

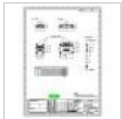
[Contact form >](#)



Abbildung ähnlich
Illustration only



[Download](#)



[Download](#)



STEP-FILE
3D

[Download](#)

Part. No.: 165X11009X

Short description

- D-SUB-Hood for Cable to Cable Connection
- 9-pos.
- Plastic, metallized
- Straight Cable Entry
- Jack screw / Bolt
- UNC 4-40

Please send us

Quote

Drawing

Sample

3D File

Contact me by phone

[Send request](#)

General Data

Cable entry	Straight Cable Entry
Hardware options mating side	Threaded bolt
Housing material	Plastic, metallized
Mounting style	Jack screw / Bolt
Size/Number of positions	9-pos.
Thread type	UNC 4-40
Type	Hood for Cable to Cable Connection

Material Data

Housing material	ABS UL 94 V-0
Mounting option material	Steel
Plating mounting option	Nickel
Plating of housing	Nickel

Technical Data

IP rating	IP 20
------------------	-------

Do you know our Newsletter?

- Be the first to learn about innovations concerning your connector applications.
- Newsletters every 4 to 6 weeks; unsubscribe with just one click at any time!

News FRESH

I would like to receive exclusive product information as of now!

e-mail address

[Subscribe to our newsletter >](#)

I have read the privacy policy and agree to the processing and use of my personal data for the delivery of the newsletter.

Product areas

- [D-SUB Connectors](#)
- [IP67 D-SUB Connectors](#)
- [IP67 RJ45 / USB / Fiber Optic / Power Bayonet](#)
- [Hybrid Connectors](#)
- [Sensor Actor Line Connectors/Circular Connectors](#)
- [PCB Connectors](#)
- [Applications](#)

The company CONEC

Industry 4.0, the current trend of increasing automation and data exchange in manufacturing environments, has resulted in new demands on electronic connectors. More data, being transferred at faster speeds, and the need for high reliability in sometimes harsh environments, has forced the development of new connectors. Conec's more than 40 years of experience positions us to be a world leader in these interconnect products. CONEC produces in modern production sites using high-tech technologies and reliable production processes. CONEC products are used in automation, telecommunications and energy technology, machine manufacturing, agriculture and medical technology, transportation and aviation industry. High quality standards are ensured by applying DIN EN ISO 9001 standards. Depending on the product family, CONEC industrial connectors are tested and approved in accordance with UL-CSA-VDE.

Service area

- [Company](#)
- [News](#)
- [Downloads](#)
- [Contact](#)

Social Media



X-ON Electronics

Largest Supplier of Electrical and Electronic Components

Click to view similar products for [D-Sub Backshells](#) category:

Click to view products by [CONEC](#) manufacturer:

Other Similar products are found below :

[M85049/6-38N](#) [M85049/86-12N03](#) [M85049/90-13P03](#) [70.350.0636.4](#) [70.350.2435.1](#) [72.350.1035.2](#) [72.352.2435.1](#) [73.359.4035.3](#) [829472-1](#)
[PCS-E20W](#) [970-015-040R011](#) [970-025-040R011](#) [971-009-030R121](#) [971-009-040R011](#) [971-015-040R011](#) [1437013-9](#) [1484402-8](#) [156-3025-](#)
[EX](#) [16-500800](#) [165X02659X](#) [165X03329A](#) [165X03399A](#) [165X10259X](#) [165X11759X](#) [165X11889X](#) [165X13019X](#) [165X13029X](#)
[165X13169X](#) [165X13199X](#) [165X13239X](#) [165X13389X](#) [165X13489X](#) [165X14219X](#) [165X14449X](#) [165X17409X](#) [165X17439X](#)
[165X17569X](#) [165X17599X](#) [165X17609X](#) [165X17889X](#) [165X17979X](#) [L171373](#) [971-025-030R121](#) [300X10989X](#) [165X02609X](#)
[165X02689X](#) [165X04219A](#) [165X10469X](#) [165X11279X](#) [165X11789X](#)