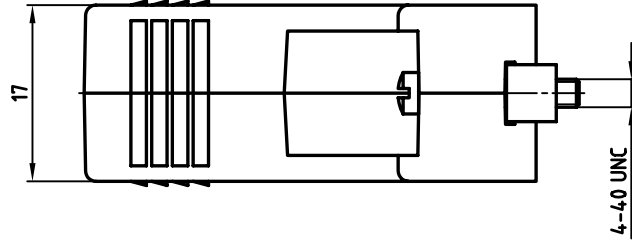
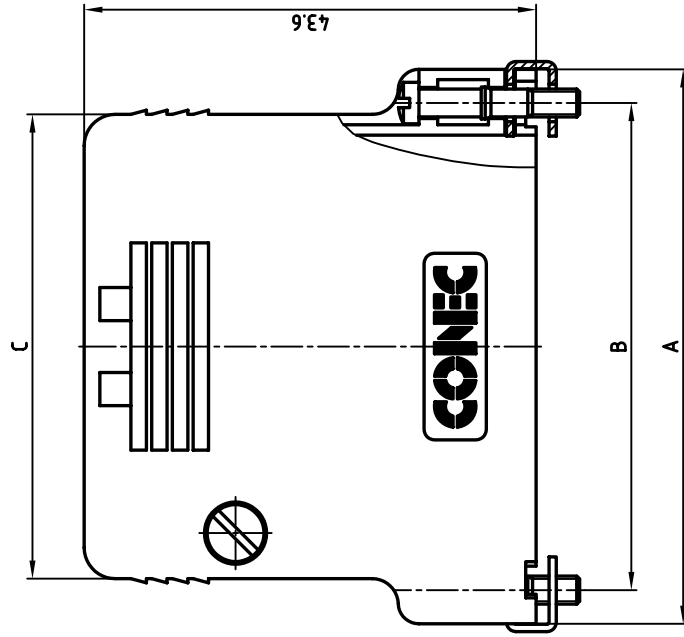
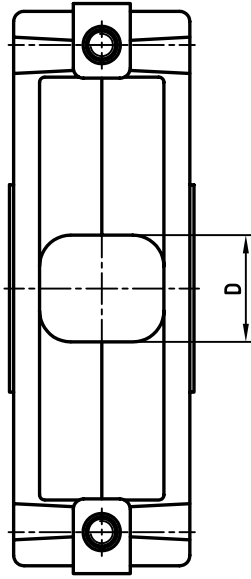


used for: D-SUB



**NOTES:**  
 MATERIAL: HOOD: POLYAMID 6.6 GF 25 UL 94 V-0; BLACK  
 SCREW: COPPER ALLOY; NICKEL PLATED  
 CLAMP: STEEL; NICKEL PLATED

NO. OF POS.	A	B	C	D	PART NO.
9	31.2	25.0	22.8	8.0	165X13179X
25	53.5	47.0	44.8	10.3	165X13199X
37	69.7	63.5	61.3	10.3	165X13209X

THIS DRAWING MAY NOT BE COPIED OR REPRODUCED IN ANY WAY, AND MAY NOT BE PASSED ON TO A THIRD PARTY WITHOUT WRITTEN PERMISSION.  
 OWNERSHIP AND COPYRIGHT OF CONEC GMBH  
 DO NOT ALTER CAD DRAWING BY HAND



1994	date	name
drawn	23.03.	Barcinski
appd.	23.03.	Mickenbacher
norm		DIN 41652
e-old		16V110A

rev.	description	date	name
"b"	Ä 547	13.12.94	Bar.

tolerance	scale:
±0.3	2:1

material:	title:
SEE NOTES	TWO-PART HOOD 9, 25 and 37pos. FOR CABLE BINDING FLAT VERSION
dwg no:	AutoCADREL.13
part no:	16V110B
	DIN-A
	3
	sh: 1/1

SEE TABLE

## X-ON Electronics

Largest Supplier of Electrical and Electronic Components

*Click to view similar products for [D-Sub Backshells](#) category:*

*Click to view products by [CONEC](#) manufacturer:*

Other Similar products are found below :

[M85049/6-38N](#) [M85049/86-12N03](#) [M85049/90-13P03](#) [70.350.0636.4](#) [70.350.2435.1](#) [72.350.1035.2](#) [72.352.2435.1](#) [73.359.4035.3](#) [829472-1](#)  
[PCS-E20W](#) [970-015-040R011](#) [970-025-040R011](#) [971-009-030R121](#) [971-009-040R011](#) [971-015-040R011](#) [1437013-9](#) [1484402-8](#) [156-3025-](#)  
[EX](#) [16-500800](#) [165X02659X](#) [165X03329A](#) [165X03399A](#) [165X10259X](#) [165X11759X](#) [165X11889X](#) [165X13019X](#) [165X13029X](#)  
[165X13169X](#) [165X13199X](#) [165X13239X](#) [165X13389X](#) [165X13489X](#) [165X14219X](#) [165X14449X](#) [165X17409X](#) [165X17439X](#)  
[165X17569X](#) [165X17599X](#) [165X17609X](#) [165X17889X](#) [165X17979X](#) [L171373](#) [971-025-030R121](#) [300X10989X](#) [165X02609X](#)  
[165X02639X](#) [165X02689X](#) [165X04219A](#) [165X10469X](#) [165X11279X](#)