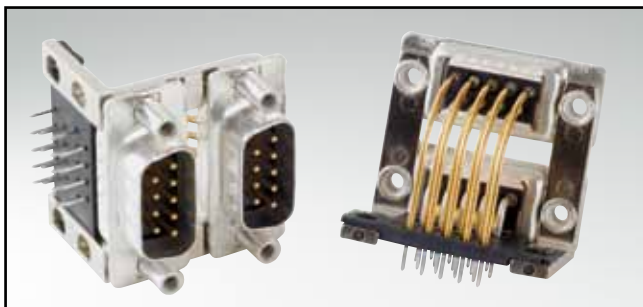


# C-FILTER D-SUB STANDARD – DUAL PORT

Solder pin – Angled – Precision machined contacts – .625" / 15.88 mm connector spacing

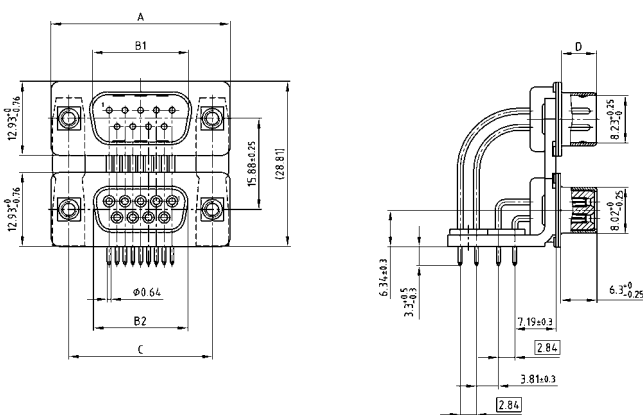


RoHS compliant – CSA listed, File No.: LR 115000-1 – UL listed, File No.: E202784

## DESCRIPTION

- Variations: plug – plug; socket – socket; plug – socket
- Mounting styles:
  - with mounting bracket and 4-40 UNC threaded insert
  - with mounting bracket and 4-40 UNC front spacer
- Quality class 3 (also available in quality class 1)
- Shell: Steel tin plated (brass tin plated on request)

## PRODUCT DRAWING

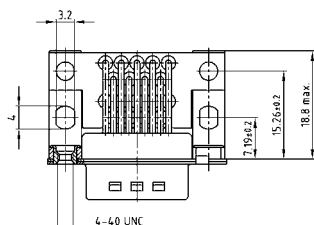


No. of pos.	A -0.76	B1 +0.25	B2 -0.25	C	D ±0.30
2X 09	31.19	16.79	16.46	25.00 <sup>+0.12</sup> / <sub>-0.13</sub>	6.12
2X 15	39.52	25.12	24.79	33.30 <sup>+0.15</sup> / <sub>-0.10</sub>	6.12
2X 25	53.42	38.84	38.50	47.04 <sup>+0.13</sup> / <sub>-0.13</sub>	5.99
2X 37	69.70	55.30	54.96	63.50 <sup>+0.13</sup> / <sub>-0.13</sub>	5.99

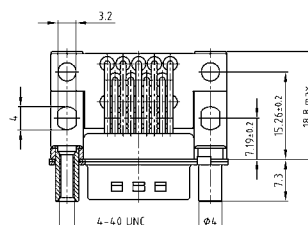
Graphically representation of only one variant!

PCB layout: Kat1iU5A / Kat1iU6A

Mounting style: Threaded insert



Mounting style: Front spacer



## ORDER DATA

### Capacitance 180 pF

#### VERSION WITH 4-40 UNC THREADED INSERT

No. of pos.	Design	Part Number
09/09	Plug upper / Plug bottom	241 A 22300 X
15/15	Plug upper / Plug bottom	241 A 22310 X
25/25	Plug upper / Plug bottom	241 A 22320 X
37/37	Plug upper / Plug bottom	241 A 22330 X
09/09	Plug upper / Socket bottom	241 A 22340 X
15/15	Plug upper / Socket bottom	241 A 22350 X
25/25	Plug upper / Socket bottom	241 A 22360 X
37/37	Plug upper / Socket bottom	241 A 22370 X
09/09	Socket upper / Socket bottom	242 A 22000 X
15/15	Socket upper / Socket bottom	242 A 22010 X
25/25	Socket upper / Socket bottom	242 A 22020 X
37/37	Socket upper / Socket bottom	242 A 22030 X
09/09	Socket upper / Plug bottom	242 A 22040 X
15/15	Socket upper / Plug bottom	242 A 22050 X
25/25	Socket upper / Plug bottom	242 A 22060 X
37/37	Socket upper / Plug bottom	242 A 22070 X

#### VERSION WITH 4-40 UNC FRONT SPACER

No. of pos.	Design	Part Number
09/09	Plug upper / Plug bottom	241 A 17420 X
15/15	Plug upper / Plug bottom	241 A 17430 X
25/25	Plug upper / Plug bottom	241 A 17440 X
37/37	Plug upper / Plug bottom	241 A 17450 X
09/09	Plug upper / Socket bottom	241 A 17460 X
15/15	Plug upper / Socket bottom	241 A 17470 X
25/25	Plug upper / Socket bottom	241 A 17480 X
37/37	Plug upper / Socket bottom	241 A 17490 X
09/09	Socket upper / Socket bottom	242 A 22080 X
15/15	Socket upper / Socket bottom	242 A 22090 X
25/25	Socket upper / Socket bottom	242 A 22100 X
37/37	Socket upper / Socket bottom	242 A 22110 X
09/09	Socket upper / Plug bottom	242 A 22120 X
15/15	Socket upper / Plug bottom	242 A 22130 X
25/25	Socket upper / Plug bottom	242 A 22140 X
37/37	Socket upper / Plug bottom	242 A 22150 X

# C-FILTER D-SUB STANDARD – DUAL PORT

Solder pin – Angled – Precision machined contacts – .625" / 15.88 mm connector spacing

ORDER DATA

## Capacitance 370 pF

	VERSION WITH 4-40 UNC THREADED INSERT				VERSION WITH 4-40 UNC FRONT SPACER			
	No. of pos.	Design	Part Number		No. of pos.	Design	Part Number	
	09/09	Plug upper / Plug bottom	241 A 14130	X	09/09	Plug upper / Plug bottom	241 A 14370	X
	15/15	Plug upper / Plug bottom	241 A 14140	X	15/15	Plug upper / Plug bottom	241 A 14380	X
	25/25	Plug upper / Plug bottom	241 A 14150	X	25/25	Plug upper / Plug bottom	241 A 14390	X
	37/37	Plug upper / Plug bottom	241 A 14160	X	37/37	Plug upper / Plug bottom	241 A 14400	X
	09/09	Plug upper / Socket bottom	241 A 14250	X	09/09	Plug upper / Socket bottom	241 A 14490	X
	15/15	Plug upper / Socket bottom	241 A 14260	X	15/15	Plug upper / Socket bottom	241 A 14500	X
	25/25	Plug upper / Socket bottom	241 A 14270	X	25/25	Plug upper / Socket bottom	241 A 14510	X
	37/37	Plug upper / Socket bottom	241 A 14280	X	37/37	Plug upper / Socket bottom	241 A 14520	X
	09/09	Socket upper / Socket bottom	242 A 14020	X	09/09	Socket upper / Socket bottom	242 A 14260	X
	15/15	Socket upper / Socket bottom	242 A 14030	X	15/15	Socket upper / Socket bottom	242 A 14270	X
	25/25	Socket upper / Socket bottom	242 A 14040	X	25/25	Socket upper / Socket bottom	242 A 14280	X
	37/37	Socket upper / Socket bottom	242 A 14050	X	37/37	Socket upper / Socket bottom	242 A 14290	X
	09/09	Socket upper / Plug bottom	242 A 14140	X	09/09	Socket upper / Plug bottom	242 A 14380	X
	15/15	Socket upper / Plug bottom	242 A 14150	X	15/15	Socket upper / Plug bottom	242 A 14390	X
	25/25	Socket upper / Plug bottom	242 A 14160	X	25/25	Socket upper / Plug bottom	242 A 14400	X
	37/37	Socket upper / Plug bottom	242 A 14170	X	37/37	Socket upper / Plug bottom	242 A 14410	X

## Capacitance 830 pF

	VERSION WITH 4-40 UNC THREADED INSERT				VERSION WITH 4-40 UNC FRONT SPACER			
	No. of pos.	Design	Part Number		No. of pos.	Design	Part Number	
	09/09	Plug upper / Plug bottom	241 A 14210	X	09/09	Plug upper / Plug bottom	241 A 14450	X
	15/15	Plug upper / Plug bottom	241 A 14220	X	15/15	Plug upper / Plug bottom	241 A 14460	X
	25/25	Plug upper / Plug bottom	241 A 14230	X	25/25	Plug upper / Plug bottom	241 A 14470	X
	37/37	Plug upper / Plug bottom	241 A 14240	X	37/37	Plug upper / Plug bottom	241 A 14480	X
	09/09	Plug upper / Socket bottom	241 A 14330	X	09/09	Plug upper / Socket bottom	241 A 14570	X
	15/15	Plug upper / Socket bottom	241 A 14340	X	15/15	Plug upper / Socket bottom	241 A 14580	X
	25/25	Plug upper / Socket bottom	241 A 14350	X	25/25	Plug upper / Socket bottom	241 A 14590	X
	37/37	Plug upper / Socket bottom	241 A 14360	X	37/37	Plug upper / Socket bottom	241 A 14600	X
	09/09	Socket upper / Socket bottom	242 A 14100	X	09/09	Socket upper / Socket bottom	242 A 14340	X
	15/15	Socket upper / Socket bottom	242 A 14110	X	15/15	Socket upper / Socket bottom	242 A 14350	X
	25/25	Socket upper / Socket bottom	242 A 14120	X	25/25	Socket upper / Socket bottom	242 A 14360	X
	37/37	Socket upper / Socket bottom	242 A 14130	X	37/37	Socket upper / Socket bottom	242 A 14370	X
	09/09	Socket upper / Plug bottom	242 A 14220	X	09/09	Socket upper / Plug bottom	242 A 14460	X
	15/15	Socket upper / Plug bottom	242 A 14230	X	15/15	Socket upper / Plug bottom	242 A 14470	X
	25/25	Socket upper / Plug bottom	242 A 14240	X	25/25	Socket upper / Plug bottom	242 A 14480	X
	37/37	Socket upper / Plug bottom	242 A 14250	X	37/37	Socket upper / Plug bottom	242 A 14490	X

## Capacitance 1300 pF

	VERSION WITH 4-40 UNC THREADED INSERT				VERSION WITH 4-40 UNC FRONT SPACER			
	No. of pos.	Design	Part Number		No. of pos.	Design	Part Number	
	09/09	Plug upper / Plug bottom	241 A 14170	X	09/09	Plug upper / Plug bottom	241 A 14410	X
	15/15	Plug upper / Plug bottom	241 A 14180	X	15/15	Plug upper / Plug bottom	241 A 14420	X
	25/25	Plug upper / Plug bottom	241 A 14190	X	25/25	Plug upper / Plug bottom	241 A 14430	X
	37/37	Plug upper / Plug bottom	241 A 14200	X	37/37	Plug upper / Plug bottom	241 A 14440	X
	09/09	Plug upper / Socket bottom	241 A 14290	X	09/09	Plug upper / Socket bottom	241 A 14530	X
	15/15	Plug upper / Socket bottom	241 A 14300	X	15/15	Plug upper / Socket bottom	241 A 14540	X
	25/25	Plug upper / Socket bottom	241 A 14310	X	25/25	Plug upper / Socket bottom	241 A 14550	X
	37/37	Plug upper / Socket bottom	241 A 14320	X	37/37	Plug upper / Socket bottom	241 A 14560	X
	09/09	Socket upper / Socket bottom	242 A 14060	X	09/09	Socket upper / Socket bottom	242 A 14300	X
	15/15	Socket upper / Socket bottom	242 A 14070	X	15/15	Socket upper / Socket bottom	242 A 14310	X
	25/25	Socket upper / Socket bottom	242 A 14080	X	25/25	Socket upper / Socket bottom	242 A 14320	X
	37/37	Socket upper / Socket bottom	242 A 14090	X	37/37	Socket upper / Socket bottom	242 A 14330	X
	09/09	Socket upper / Plug bottom	242 A 14180	X	09/09	Socket upper / Plug bottom	242 A 14420	X
	15/15	Socket upper / Plug bottom	242 A 14190	X	15/15	Socket upper / Plug bottom	242 A 14430	X
	25/25	Socket upper / Plug bottom	242 A 14200	X	25/25	Socket upper / Plug bottom	242 A 14440	X
	37/37	Socket upper / Plug bottom	242 A 14210	X	37/37	Socket upper / Plug bottom	242 A 14450	X

## X-ON Electronics

Largest Supplier of Electrical and Electronic Components

*Click to view similar products for [D-Sub Dualport Connectors](#) category:*

*Click to view products by [CONEC](#) manufacturer:*

Other Similar products are found below :

[787672-3](#) [164A15909X](#) [K42X-E15S/S-A4NJ](#) [K42X-E9SS-A4NJ](#) [242A14060X](#) [164A15819X](#) [DLS2SS5AN21X](#) [241A22450X](#) [242A14180X](#)  
[241A14190X](#) [DLS4SS5AN21X](#) [178-037-513R491](#) [178-037-613R491](#) [178-009-413R571](#) [178-009-513R571](#) [178-009-613R491](#) [178-009-613R691](#) [178-015-513R571](#) [178-015-613R571](#) [178-025-513R571](#) [179-009-513R571](#) [179-009-613R571](#) [179-025-513R571](#) [179-037-513R571](#)  
[K42X-E15S/S-A4N](#) [K42X-E9S/P-A4N](#) [L17H2220131](#) [178-015-513R491](#) [178-025-613R481](#) [178-025-613R571](#) [178-037-513R571](#) [178-037-513R671](#) [L17H2220120](#) [L17H2ED0130](#) [L17H1440130](#) [L17H1770231](#) [L17H2110120](#) [L17H2440120TM](#) [L17H1431134](#) [L17H1212130](#)  
[L17H2212120](#) [L17H1222134](#) [L17H2662120TM](#) [L17H2550120](#) [L17H2440120](#) [L17H2440121](#) [L17H1120134](#) [L17H2120120](#) [L17H2120230](#)  
[L17H1440134](#)