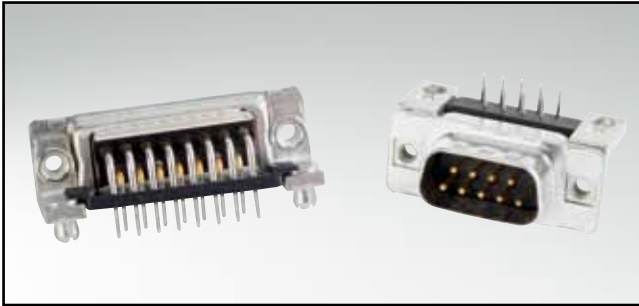


# C-FILTER D-SUB STANDARD

Solder pin – Angled – .318" / 7.19 mm – Precision machined contacts – Metal bracket

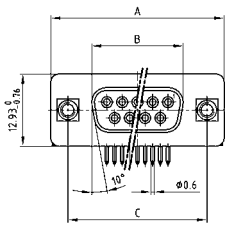


RoHS compliant – CSA listed, File No.: LR 115000-1 – UL listed, File No.: E202784

## DESCRIPTION

- Mounting styles:
  - with mounting bracket and 4-40 UNC threaded insert
  - with mounting bracket, PCB clip and 4-40 UNC threaded insert
- Quality class 3 (also available in quality class 1)
- Shell: Steel tin plated (brass tin plated on request)

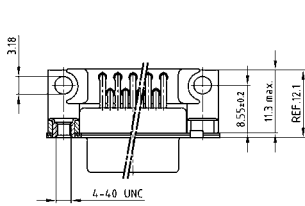
## SOCKET CONNECTOR



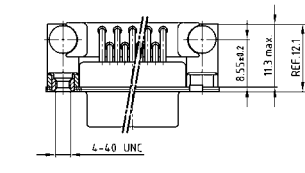
No. of pos.	A -0.76	B -0.25	C
09	31.19	16.46	25.00 <sup>+0.12</sup> / <sub>-0.13</sub>
15	39.52	24.79	33.30 <sup>+0.15</sup> / <sub>-0.10</sub>
25	53.42	38.50	47.04 <sup>+0.13</sup> / <sub>-0.13</sub>
37	69.70	54.96	63.50 <sup>+0.13</sup> / <sub>-0.13</sub>

PCB layout: Kat1kGEA

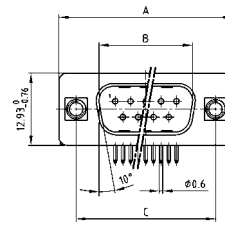
Mounting style: Threaded insert



Mounting style: PCB clip, threaded insert



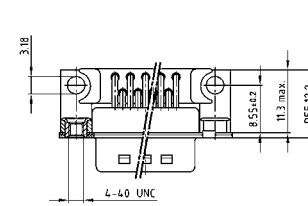
## PLUG CONNECTOR



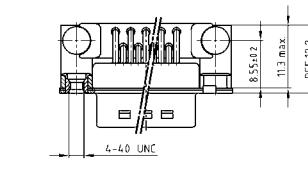
No. of pos.	A -0.76	B +0.25	C	D -0.3
09	31.19	16.79	25.00 <sup>+0.12</sup> / <sub>-0.13</sub>	6.12
15	39.52	25.12	33.30 <sup>+0.15</sup> / <sub>-0.10</sub>	6.12
25	53.42	38.84	47.04 <sup>+0.13</sup> / <sub>-0.13</sub>	5.99
37	69.70	55.30	63.50 <sup>+0.13</sup> / <sub>-0.13</sub>	5.99

PCB layout: Kat1kGFA

Mounting style: Threaded insert



Mounting style: PCB clip, threaded insert



## ORDER DATA

### Capacitance 180 pF

SOCKET CONNECTOR		
No. of pos.	Mounting style 4-40 UNC	Part Number
09	Threaded insert	242 A 17180 X
15	Threaded insert	242 A 17190 X
25	Threaded insert	242 A 17200 X
37	Threaded insert	242 A 17210 X
09	PCB clip / Threaded insert	242 A 17780 X
15	PCB clip / Threaded insert	242 A 17790 X
25	PCB clip / Threaded insert	242 A 17800 X
37	PCB clip / Threaded insert	242 A 17810 X

PLUG CONNECTOR		
No. of pos.	Mounting style 4-40 UNC	Part Number
09	Threaded insert	241 A 19800 X
15	Threaded insert	241 A 19810 X
25	Threaded insert	241 A 19820 X
37	Threaded insert	241 A 19830 X
09	PCB clip / Threaded insert	241 A 16180 X
15	PCB clip / Threaded insert	241 A 16190 X
25	PCB clip / Threaded insert	241 A 16200 X
37	PCB clip / Threaded insert	241 A 16210 X

PCB clip .122"/3.1 ± .004"/0.10 mm hole diameter and .063"/1.6 mm circuit board thickness

# C-FILTER D-SUB STANDARD

Solder pin – Angled – .318" / 7.19 mm – Precision machined contacts – Metal bracket

**ORDER DATA**

Capacitance 370 pF					
SOCKET CONNECTOR			PLUG CONNECTOR		
No. of pos.	Mounting style 4-40 UNC	Part Number	No. of pos.	Mounting style 4-40 UNC	Part Number
09	Threaded insert	242 A 12340 X	09	Threaded insert	241 A 12320 X
15	Threaded insert	242 A 12350 X	15	Threaded insert	241 A 12330 X
25	Threaded insert	242 A 12360 X	25	Threaded insert	241 A 12340 X
37	Threaded insert	242 A 12370 X	37	Threaded insert	241 A 12350 X
09	PCB clip / Threaded insert	242 A 17740 X	09	PCB clip / Threaded insert	241 A 16140 X
15	PCB clip / Threaded insert	242 A 17750 X	15	PCB clip / Threaded insert	241 A 16150 X
25	PCB clip / Threaded insert	242 A 17760 X	25	PCB clip / Threaded insert	241 A 16160 X
37	PCB clip / Threaded insert	242 A 17770 X	37	PCB clip / Threaded insert	241 A 16170 X

Capacitance 830 pF					
SOCKET CONNECTOR			PLUG CONNECTOR		
No. of pos.	Mounting style 4-40 UNC	Part Number	No. of pos.	Mounting style 4-40 UNC	Part Number
09	Threaded insert	242 A 12420 X	09	Threaded insert	241 A 12400 X
15	Threaded insert	242 A 12430 X	15	Threaded insert	241 A 12410 X
25	Threaded insert	242 A 12440 X	25	Threaded insert	241 A 12420 X
37	Threaded insert	242 A 12450 X	37	Threaded insert	241 A 12430 X
09	PCB clip / Threaded insert	242 A 17700 X	09	PCB clip / Threaded insert	241 A 16100 X
15	PCB clip / Threaded insert	242 A 17710 X	15	PCB clip / Threaded insert	241 A 16110 X
25	PCB clip / Threaded insert	242 A 17720 X	25	PCB clip / Threaded insert	241 A 16120 X
37	PCB clip / Threaded insert	242 A 17730 X	37	PCB clip / Threaded insert	241 A 16130 X

Capacitance 1300 pF					
SOCKET CONNECTOR			PLUG CONNECTOR		
No. of pos.	Mounting style 4-40 UNC	Part Number	No. of pos.	Mounting style 4-40 UNC	Part Number
09	Threaded insert	242 A 12380 X	09	Threaded insert	241 A 12360 X
15	Threaded insert	242 A 12390 X	15	Threaded insert	241 A 12370 X
25	Threaded insert	242 A 12400 X	25	Threaded insert	241 A 12380 X
37	Threaded insert	242 A 12410 X	37	Threaded insert	241 A 12390 X
09	PCB clip / Threaded insert	242 A 17660 X	09	PCB clip / Threaded insert	241 A 16060 X
15	PCB clip / Threaded insert	242 A 17670 X	15	PCB clip / Threaded insert	241 A 16070 X
25	PCB clip / Threaded insert	242 A 17680 X	25	PCB clip / Threaded insert	241 A 16080 X
37	PCB clip / Threaded insert	242 A 17690 X	37	PCB clip / Threaded insert	241 A 16090 X

PCB clip .122" / 3.1 ± .004" / 0.10 mm hole diameter and .063" / 1.6 mm circuit board thickness

## X-ON Electronics

Largest Supplier of Electrical and Electronic Components

*Click to view similar products for [D-Sub Standard Connectors](#) category:*

*Click to view products by [CONEC](#) manufacturer:*

Other Similar products are found below :

[DCM37S732N](#) [DAM15P500](#) [DEV09S364GTLF](#) [DEM09P032N](#) [DDM50P732N](#) [DAM15S332N](#) [173109-2218](#) [173109-2466](#) [173109-2436](#)  
[173109-2435](#) [56F706-005-LI](#) [56F711-015](#) [015-0341-000](#) [015-0372-008](#) [015-8544-011](#) [017041-0005](#) [020419-0104](#) [012-0515-000](#) [012-9507-](#)  
[034](#) [012-9507-114](#) [012-9534-001](#) [020745-0008](#) [609-25P](#) [M24308/2-23Z](#) [M243082310F](#) [M243082410F](#) [M243082411F](#) [M24308/4-21](#)  
[CT1A18-11PSA206](#) [CT1N36-5SC](#) [CT2-16S-17PS](#) [CT2-20-15PCAU](#) [CT2-24-12PS](#) [CT2-24-28PSF127A206](#) [CT2-32-9PC](#) [CT6F9767-14-4-](#)  
[14S-5PC](#) [CT6FA10SL-4PS](#) [CT7-18-10SC](#) [CT7-18-10SCAU](#) [CT7-18-12SCAU](#) [CT7-18-1PC](#) [CT7-18-1PCAU](#) [CT7-18-21SCAU](#) [M83513/01-](#)  
[FC](#) [M83723/76W24619 L/C](#) [M85049/48-3-2F](#) [69001-865](#) [6STD09PCM99B70X](#) [6STD09SCM99B30X](#) [6STD09SCT99S40X](#)