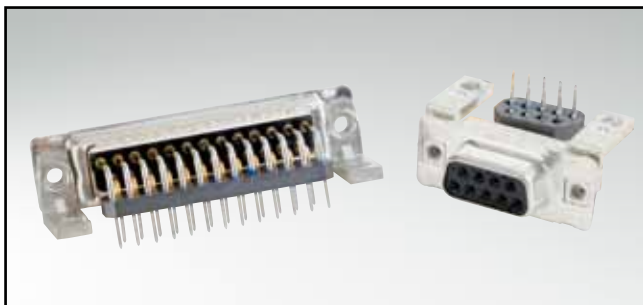


# LC-FILTER D-SUB STANDARD

Solder pin – Angled – .370" / 9.4 mm – Precision machined contacts – Metal bracket

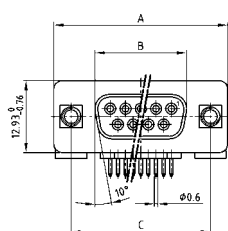


RoHS compliant – CSA listed, File No.: LR 115000-1 – UL listed, File No.: E202784

## DESCRIPTION

- Mounting styles:
  - Mounting bracket with 4-40 UNC or M3 threaded insert
  - Mounting bracket with PCB clip and 4-40 UNC or M3 threaded insert
- Quality class 3 (also available in quality class 1)
- Shell: Steel tin plated (brass tin plated on request)

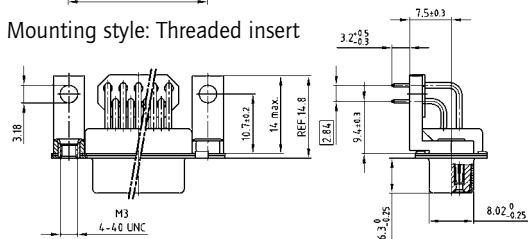
## SOCKET CONNECTOR



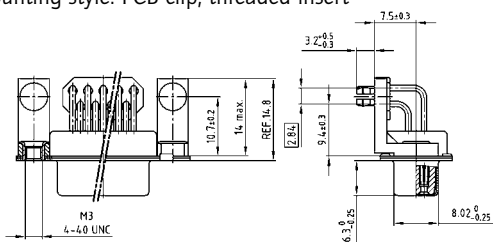
| No. of pos. | A -0.76 | B -0.25 | C   |
|-------------|---------|---------|---|
| 09          | 31.19   | 16.46   | 25.00 <sup>+0.12</sup> / <sub>-0.13</sub> |
| 15          | 39.52   | 24.79   | 33.30 <sup>+0.15</sup> / <sub>-0.10</sub> |
| 25          | 53.42   | 38.50   | 47.04 <sup>+0.13</sup>                    |
| 37          | 69.70   | 54.96   | 63.50 <sup>+0.13</sup>                    |

PCB layout: Kat1kGGA

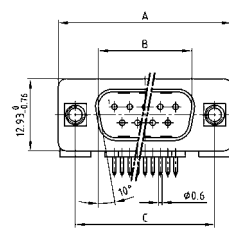
Mounting style: Threaded insert



Mounting style: PCB clip, threaded insert



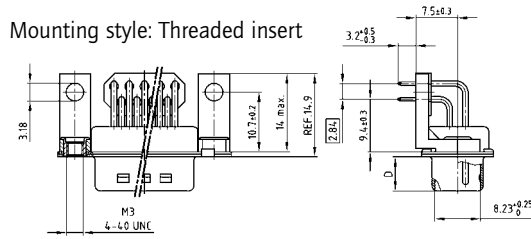
## PLUG CONNECTOR



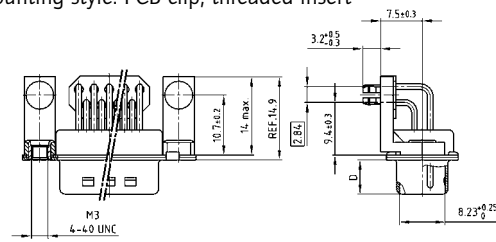
| No. of pos. | A -0.76 | B +0.25 | C   | D -0.3 |
|-------------|---------|---------|---|--------|
| 09          | 31.19   | 16.79   | 25.00 <sup>+0.12</sup> / <sub>-0.13</sub> | 6.12   |
| 15          | 39.52   | 25.12   | 33.30 <sup>+0.15</sup> / <sub>-0.10</sub> | 6.12   |
| 25          | 53.42   | 38.84   | 47.04 <sup>+0.13</sup>                    | 5.99   |
| 37          | 69.70   | 55.30   | 63.50 <sup>+0.13</sup>                    | 5.99   |

PCB layout: Kat1kGHA

Mounting style: Threaded insert



Mounting style: PCB clip, threaded insert



## ORDER DATA

### Capacitance 180 pF

#### SOCKET CONNECTOR

| No. of pos. | Mounting style                      | Part Number   |
|-------------|-------------------------------------|---------------|
| 09          | 4-40 UNC Threaded insert            | 242 A 24980 X |
| 15          | 4-40 UNC Threaded insert            | 242 A 24990 X |
| 25          | 4-40 UNC Threaded insert            | 242 A 25000 X |
| 37          | 4-40 UNC Threaded insert            | 242 A 25010 X |
| 09          | M3 Threaded insert                  | 242 A 25140 X |
| 15          | M3 Threaded insert                  | 242 A 25150 X |
| 25          | M3 Threaded insert                  | 242 A 25160 X |
| 37          | M3 Threaded insert                  | 242 A 25170 X |
| 09          | PCB clip / 4-40 UNC Threaded insert | 242 A 25300 X |
| 15          | PCB clip / 4-40 UNC Threaded insert | 242 A 25310 X |
| 25          | PCB clip / 4-40 UNC Threaded insert | 242 A 25320 X |
| 37          | PCB clip / 4-40 UNC Threaded insert | 242 A 25330 X |
| 09          | PCB clip / M3 Threaded insert       | 242 A 25460 X |
| 15          | PCB clip / M3 Threaded insert       | 242 A 25470 X |
| 25          | PCB clip / M3 Threaded insert       | 242 A 25480 X |
| 37          | PCB clip / M3 Threaded insert       | 242 A 25490 X |

#### PLUG CONNECTOR

| No. of pos. | Mounting style                      | Part Number   |
|-------------|-------------------------------------|---------------|
| 09          | 4-40 UNC Threaded insert            | 241 A 25080 X |
| 15          | 4-40 UNC Threaded insert            | 241 A 25090 X |
| 25          | 4-40 UNC Threaded insert            | 241 A 25100 X |
| 37          | 4-40 UNC Threaded insert            | 241 A 25110 X |
| 09          | M3 Threaded insert                  | 241 A 25240 X |
| 15          | M3 Threaded insert                  | 241 A 25250 X |
| 25          | M3 Threaded insert                  | 241 A 25260 X |
| 37          | M3 Threaded insert                  | 241 A 25270 X |
| 09          | PCB clip / 4-40 UNC Threaded insert | 241 A 25400 X |
| 15          | PCB clip / 4-40 UNC Threaded insert | 241 A 25410 X |
| 25          | PCB clip / 4-40 UNC Threaded insert | 241 A 25420 X |
| 37          | PCB clip / 4-40 UNC Threaded insert | 241 A 25430 X |
| 09          | PCB clip / M3 Threaded insert       | 241 A 25560 X |
| 15          | PCB clip / M3 Threaded insert       | 241 A 25570 X |
| 25          | PCB clip / M3 Threaded insert       | 241 A 25580 X |
| 37          | PCB clip / M3 Threaded insert       | 241 A 25590 X |

PCB clip .122" / 3.1 ± .004" / 0.10 mm hole diameter and .063" / 1.6 mm circuit board thickness

# LC-FILTER D-SUB STANDARD

Solder pin – Angled – .370" / 9.4 mm – Precision machined contacts – Metal bracket

**ORDER DATA**

**Capacitance 370 pF**

| SOCKET CONNECTOR |                                     |               | PLUG CONNECTOR |                                     |               |
|------------------|-------------------------------------|---------------|----------------|-------------------------------------|---------------|
| No. of pos.      | Mounting style                      | Part Number   | No. of pos.    | Mounting style                      | Part Number   |
| 09               | 4-40 UNC Threaded insert            | 242 A 25020 X | 09             | 4-40 UNC Threaded insert            | 241 A 25120 X |
| 15               | 4-40 UNC Threaded insert            | 242 A 25030 X | 15             | 4-40 UNC Threaded insert            | 241 A 25130 X |
| 25               | 4-40 UNC Threaded insert            | 242 A 25040 X | 25             | 4-40 UNC Threaded insert            | 241 A 25140 X |
| 37               | 4-40 UNC Threaded insert            | 242 A 25050 X | 37             | 4-40 UNC Threaded insert            | 241 A 25150 X |
| 09               | M3 Threaded insert                  | 242 A 25180 X | 09             | M3 Threaded insert                  | 241 A 25280 X |
| 15               | M3 Threaded insert                  | 242 A 25190 X | 15             | M3 Threaded insert                  | 241 A 25290 X |
| 25               | M3 Threaded insert                  | 242 A 25200 X | 25             | M3 Threaded insert                  | 241 A 25300 X |
| 37               | M3 Threaded insert                  | 242 A 25210 X | 37             | M3 Threaded insert                  | 241 A 25310 X |
| 09               | PCB clip / 4-40 UNC Threaded insert | 242 A 25340 X | 09             | PCB clip / 4-40 UNC Threaded insert | 241 A 25440 X |
| 15               | PCB clip / 4-40 UNC Threaded insert | 242 A 25350 X | 15             | PCB clip / 4-40 UNC Threaded insert | 241 A 25450 X |
| 25               | PCB clip / 4-40 UNC Threaded insert | 242 A 25360 X | 25             | PCB clip / 4-40 UNC Threaded insert | 241 A 25460 X |
| 37               | PCB clip / 4-40 UNC Threaded insert | 242 A 25370 X | 37             | PCB clip / 4-40 UNC Threaded insert | 241 A 25470 X |
| 09               | PCB clip / M3 Threaded insert       | 242 A 25500 X | 09             | PCB clip / M3 Threaded insert       | 241 A 25600 X |
| 15               | PCB clip / M3 Threaded insert       | 242 A 25510 X | 15             | PCB clip / M3 Threaded insert       | 241 A 25610 X |
| 25               | PCB clip / M3 Threaded insert       | 242 A 25520 X | 25             | PCB clip / M3 Threaded insert       | 241 A 25620 X |
| 37               | PCB clip / M3 Threaded insert       | 242 A 25530 X | 37             | PCB clip / M3 Threaded insert       | 241 A 25630 X |

**Capacitance 830 pF**

| SOCKET CONNECTOR |                                     |               | PLUG CONNECTOR |                                     |               |
|------------------|-------------------------------------|---------------|----------------|-------------------------------------|---------------|
| No. of pos.      | Mounting style                      | Part Number   | No. of pos.    | Mounting style                      | Part Number   |
| 09               | 4-40 UNC Threaded insert            | 242 A 25060 X | 09             | 4-40 UNC Threaded insert            | 241 A 25160 X |
| 15               | 4-40 UNC Threaded insert            | 242 A 25070 X | 15             | 4-40 UNC Threaded insert            | 241 A 25170 X |
| 25               | 4-40 UNC Threaded insert            | 242 A 25080 X | 25             | 4-40 UNC Threaded insert            | 241 A 25180 X |
| 37               | 4-40 UNC Threaded insert            | 242 A 25090 X | 37             | 4-40 UNC Threaded insert            | 241 A 25190 X |
| 09               | M3 Threaded insert                  | 242 A 25220 X | 09             | M3 Threaded insert                  | 241 A 25320 X |
| 15               | M3 Threaded insert                  | 242 A 25230 X | 15             | M3 Threaded insert                  | 241 A 25330 X |
| 25               | M3 Threaded insert                  | 242 A 25240 X | 25             | M3 Threaded insert                  | 241 A 25340 X |
| 37               | M3 Threaded insert                  | 242 A 25250 X | 37             | M3 Threaded insert                  | 241 A 25350 X |
| 09               | PCB clip / 4-40 UNC Threaded insert | 242 A 25380 X | 09             | PCB clip / 4-40 UNC Threaded insert | 241 A 25480 X |
| 15               | PCB clip / 4-40 UNC Threaded insert | 242 A 25390 X | 15             | PCB clip / 4-40 UNC Threaded insert | 241 A 25490 X |
| 25               | PCB clip / 4-40 UNC Threaded insert | 242 A 25400 X | 25             | PCB clip / 4-40 UNC Threaded insert | 241 A 25500 X |
| 37               | PCB clip / 4-40 UNC Threaded insert | 242 A 25410 X | 37             | PCB clip / 4-40 UNC Threaded insert | 241 A 25510 X |
| 09               | PCB clip / M3 Threaded insert       | 242 A 25540 X | 09             | PCB clip / M3 Threaded insert       | 241 A 25640 X |
| 15               | PCB clip / M3 Threaded insert       | 242 A 25550 X | 15             | PCB clip / M3 Threaded insert       | 241 A 25650 X |
| 25               | PCB clip / M3 Threaded insert       | 242 A 25560 X | 25             | PCB clip / M3 Threaded insert       | 241 A 25660 X |
| 37               | PCB clip / M3 Threaded insert       | 242 A 25570 X | 37             | PCB clip / M3 Threaded insert       | 241 A 25670 X |

**Capacitance 1300 pF**

| SOCKET CONNECTOR |                                     |               | PLUG CONNECTOR |                                     |               |
|------------------|-------------------------------------|---------------|----------------|-------------------------------------|---------------|
| No. of pos.      | Mounting style                      | Part Number   | No. of pos.    | Mounting style                      | Part Number   |
| 09               | 4-40 UNC Threaded insert            | 242 A 25100 X | 09             | 4-40 UNC Threaded insert            | 241 A 25200 X |
| 15               | 4-40 UNC Threaded insert            | 242 A 25110 X | 15             | 4-40 UNC Threaded insert            | 241 A 25210 X |
| 25               | 4-40 UNC Threaded insert            | 242 A 25120 X | 25             | 4-40 UNC Threaded insert            | 241 A 25220 X |
| 37               | 4-40 UNC Threaded insert            | 242 A 25130 X | 37             | 4-40 UNC Threaded insert            | 241 A 25230 X |
| 09               | M3 Threaded insert                  | 242 A 25260 X | 09             | M3 Threaded insert                  | 241 A 25360 X |
| 15               | M3 Threaded insert                  | 242 A 25270 X | 15             | M3 Threaded insert                  | 241 A 25370 X |
| 25               | M3 Threaded insert                  | 242 A 25280 X | 25             | M3 Threaded insert                  | 241 A 25380 X |
| 37               | M3 Threaded insert                  | 242 A 25290 X | 37             | M3 Threaded insert                  | 241 A 25390 X |
| 09               | PCB clip / 4-40 UNC Threaded insert | 242 A 25420 X | 09             | PCB clip / 4-40 UNC Threaded insert | 241 A 25520 X |
| 15               | PCB clip / 4-40 UNC Threaded insert | 242 A 25430 X | 15             | PCB clip / 4-40 UNC Threaded insert | 241 A 25530 X |
| 25               | PCB clip / 4-40 UNC Threaded insert | 242 A 25440 X | 25             | PCB clip / 4-40 UNC Threaded insert | 241 A 25540 X |
| 37               | PCB clip / 4-40 UNC Threaded insert | 242 A 25450 X | 37             | PCB clip / 4-40 UNC Threaded insert | 241 A 25550 X |
| 09               | PCB clip / M3 Threaded insert       | 242 A 25580 X | 09             | PCB clip / M3 Threaded insert       | 241 A 25680 X |
| 15               | PCB clip / M3 Threaded insert       | 242 A 25590 X | 15             | PCB clip / M3 Threaded insert       | 241 A 25690 X |
| 25               | PCB clip / M3 Threaded insert       | 242 A 25600 X | 25             | PCB clip / M3 Threaded insert       | 241 A 25700 X |
| 37               | PCB clip / M3 Threaded insert       | 242 A 25610 X | 37             | PCB clip / M3 Threaded insert       | 241 A 25710 X |

PCB clip .122" / 3.1 ± .004" / 0.10 mm hole diameter and .063" / 1.6 mm circuit board thickness

## X-ON Electronics

Largest Supplier of Electrical and Electronic Components

*Click to view similar products for [D-Sub Standard Connectors](#) category:*

*Click to view products by [CONEC](#) manufacturer:*

Other Similar products are found below :

[56F711-015](#) [012-9507-004](#) [LV242999-142T12](#) [015-0341-000](#) [015-0349-000](#) [015-0372-005](#) [015-0372-008](#) [015-8755-001](#) [020419-0104](#) [012-0467-000](#) [012-0515-000](#) [012-9507-034](#) [012-9507-114](#) [020745-0008](#) [609-25P](#) [CT2-14S-2PCA34](#) [CT2-18-11PCAU](#) [CT2-36-15SC](#) [CT6-14S-2SC](#) [CT6E14SA7SC](#) [CT6E22-14PC](#) [CT6E22-14PS](#) [CT6E22-22PS](#) [M83513/01-FC](#) [M85049/48-3-2F](#) [6STD09PCM99B70X](#) [6STD09SCM99B30X](#) [6STD09SCT99S40X](#) [6STD15PCT99S40X](#) [6STD15SCM99B30X](#) [6STD15SCT99S40X](#) [6STF09PCM05B70X](#) [7-135760-9](#) [MC11E-10-6SN](#) [747552-3](#) [MD1-21PS](#) [MDM-15SCBRM7-F222](#) [MDM96517-699](#) [MDM96521-744](#) [MDVB1-21SL1](#) [MIK0-1-7SH003](#) [MIKQ6-7SH076](#) [MIKQ7-7PH077](#) [MIKQ7-7PH11](#) [MIKQ7-7PH32](#) [MIKQ9-7PH003](#) [MJSV-28SL61](#) [MKJ4A1F14-55S](#) [8-135760-3](#) [8STD09PCM99B30X](#)