

# C-FILTER D-SUB STANDARD

Solder cup – Precision machined contacts – For wire size AWG 26

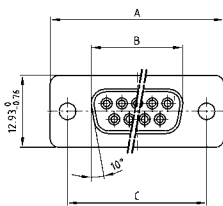


RoHS compliant – CSA listed, File No.: LR 115000-1 – UL listed, File No.: E202784

## DESCRIPTION

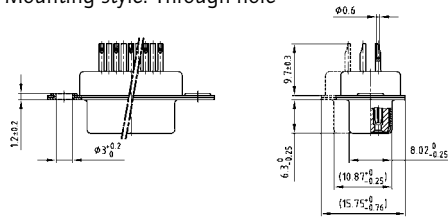
- Suitable for wire size **AWG 26**
- Mounting styles:
  - with through-hole, Ø .118"/3 mm
  - with 4-40 UNC or M3 threaded insert
- Quality class 3 (also available in quality class 1)
- Shell: Steel tin plated (brass tin plated on request)

## SOCKET CONNECTOR

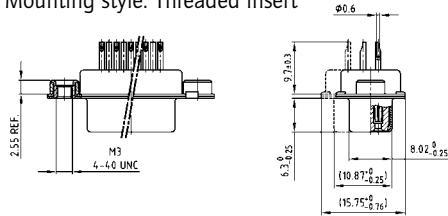


No. of pos.	A -0.76	B -0.25	C
09	31.19	16.46	25.00 <sup>+0.12</sup> <sub>-0.13</sub>
15	39.52	24.79	33.30 <sup>+0.15</sup> <sub>-0.10</sub>
25	53.42	38.50	47.04 <sup>+0.13</sup>
37	69.70	54.96	63.50 <sup>+0.13</sup>
50	67.31	52.55	61.10 <sup>+0.14</sup> <sub>-0.11</sub>

Mounting style: Through-hole

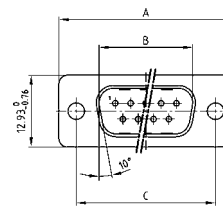


Mounting style: Threaded insert



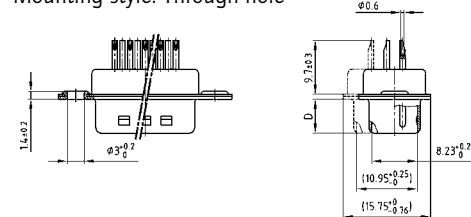
50 pos. = Dim. in ( \_ )

## PLUG CONNECTOR

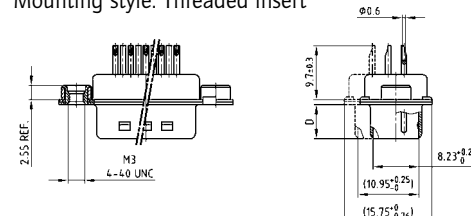


No. of pos.	A -0.76	B -0.25	C	D -0.3
09	31.19	16.79	25.00 <sup>+0.12</sup> <sub>-0.13</sub>	6.12
15	39.52	25.12	33.30 <sup>+0.15</sup> <sub>-0.10</sub>	6.12
25	53.42	38.84	47.04 <sup>+0.13</sup>	5.99
37	69.70	55.30	63.50 <sup>+0.13</sup>	5.99
50	67.31	52.68	61.10 <sup>+0.14</sup> <sub>-0.11</sub>	5.99

Mounting style: Through-hole



Mounting style: Threaded insert



50 pos. = Dim. in ( \_ )

## ORDER DATA

### Capacitance 180 pF

SOCKET CONNECTOR			PLUG CONNECTOR		
No. of pos.	Mounting style	Part Number	No. of pos.	Mounting style	Part Number
09	Through-hole	242 A 15910 X	09	Through-hole	241 A 18530 X
15	Through-hole	242 A 15920 X	15	Through-hole	241 A 18540 X
25	Through-hole	242 A 15930 X	25	Through-hole	241 A 18550 X
37	Through-hole	242 A 15940 X	37	Through-hole	241 A 18560 X
50	Through-hole	242 A 15950 X	50	Through-hole	241 A 18570 X
09	4-40 UNC Threaded insert	242 A 15960 X	09	4-40 UNC Threaded insert	241 A 18580 X
15	4-40 UNC Threaded insert	242 A 15970 X	15	4-40 UNC Threaded insert	241 A 18590 X
25	4-40 UNC Threaded insert	242 A 15980 X	25	4-40 UNC Threaded insert	241 A 18600 X
37	4-40 UNC Threaded insert	242 A 15990 X	37	4-40 UNC Threaded insert	241 A 18610 X
50	4-40 UNC Threaded insert	242 A 16000 X	50	4-40 UNC Threaded insert	241 A 18620 X
09	M3 Threaded insert	242 A 16010 X	09	M3 Threaded insert	241 A 18630 X
15	M3 Threaded insert	242 A 16020 X	15	M3 Threaded insert	241 A 18640 X
25	M3 Threaded insert	242 A 16030 X	25	M3 Threaded insert	241 A 18650 X
37	M3 Threaded insert	242 A 16040 X	37	M3 Threaded insert	241 A 18660 X
50	M3 Threaded insert	242 A 16050 X	50	M3 Threaded insert	241 A 18670 X

# C-FILTER D-SUB STANDARD

Solder cup – Precision machined contacts – For wire size AWG 26

**ORDER DATA**

Capacitance 370 pF					
SOCKET CONNECTOR			PLUG CONNECTOR		
No. of pos.	Mounting style	Part Number	No. of pos.	Mounting style	Part Number
09	Through-hole	242 A 11610 X	09	Through-hole	241 A 11600 X
15	Through-hole	242 A 11620 X	15	Through-hole	241 A 11610 X
25	Through-hole	242 A 11630 X	25	Through-hole	241 A 11620 X
37	Through-hole	242 A 11640 X	37	Through-hole	241 A 11630 X
50	Through-hole	242 A 15820 X	50	Through-hole	241 A 15930 X
09	4-40 UNC Threaded insert	242 A 11730 X	09	4-40 UNC Threaded insert	241 A 11720 X
15	4-40 UNC Threaded insert	242 A 11740 X	15	4-40 UNC Threaded insert	241 A 11730 X
25	4-40 UNC Threaded insert	242 A 11750 X	25	4-40 UNC Threaded insert	241 A 11740 X
37	4-40 UNC Threaded insert	242 A 11760 X	37	4-40 UNC Threaded insert	241 A 11750 X
50	4-40 UNC Threaded insert	242 A 15850 X	50	4-40 UNC Threaded insert	241 A 15960 X
09	M3 Threaded insert	242 A 11850 X	09	M3 Threaded insert	241 A 11840 X
15	M3 Threaded insert	242 A 11860 X	15	M3 Threaded insert	241 A 11850 X
25	M3 Threaded insert	242 A 11870 X	25	M3 Threaded insert	241 A 11860 X
37	M3 Threaded insert	242 A 11880 X	37	M3 Threaded insert	241 A 11870 X
50	M3 Threaded insert	242 A 15880 X	50	M3 Threaded insert	241 A 15990 X

Capacitance 830 pF					
SOCKET CONNECTOR			PLUG CONNECTOR		
No. of pos.	Mounting style	Part Number	No. of pos.	Mounting style	Part Number
09	Through-hole	242 A 11690 X	09	Through-hole	241 A 11680 X
15	Through-hole	242 A 11700 X	15	Through-hole	241 A 11690 X
25	Through-hole	242 A 11710 X	25	Through-hole	241 A 11700 X
37	Through-hole	242 A 11720 X	37	Through-hole	241 A 11710 X
50	Through-hole	242 A 15840 X	50	Through-hole	241 A 15950 X
09	4-40 UNC Threaded insert	242 A 11810 X	09	4-40 UNC Threaded insert	241 A 11800 X
15	4-40 UNC Threaded insert	242 A 11820 X	15	4-40 UNC Threaded insert	241 A 11810 X
25	4-40 UNC Threaded insert	242 A 11830 X	25	4-40 UNC Threaded insert	241 A 11820 X
37	4-40 UNC Threaded insert	242 A 11840 X	37	4-40 UNC Threaded insert	241 A 11830 X
50	4-40 UNC Threaded insert	242 A 15870 X	50	4-40 UNC Threaded insert	241 A 15980 X
09	M3 Threaded insert	242 A 11930 X	09	M3 Threaded insert	241 A 11920 X
15	M3 Threaded insert	242 A 11940 X	15	M3 Threaded insert	241 A 11930 X
25	M3 Threaded insert	242 A 11950 X	25	M3 Threaded insert	241 A 11940 X
37	M3 Threaded insert	242 A 11960 X	37	M3 Threaded insert	241 A 11950 X
50	M3 Threaded insert	242 A 15900 X	50	M3 Threaded insert	241 A 16010 X

Capacitance 1300 pF					
SOCKET CONNECTOR			PLUG CONNECTOR		
No. of pos.	Mounting style	Part Number	No. of pos.	Mounting style	Part Number
09	Through-hole	242 A 11650 X	09	Through-hole	241 A 11640 X
15	Through-hole	242 A 11660 X	15	Through-hole	241 A 11650 X
25	Through-hole	242 A 11670 X	25	Through-hole	241 A 11660 X
37	Through-hole	242 A 11680 X	37	Through-hole	241 A 11670 X
50	Through-hole	242 A 15830 X	50	Through-hole	241 A 15940 X
09	4-40 UNC Threaded insert	242 A 11770 X	09	4-40 UNC Threaded insert	241 A 11760 X
15	4-40 UNC Threaded insert	242 A 11780 X	15	4-40 UNC Threaded insert	241 A 11770 X
25	4-40 UNC Threaded insert	242 A 11790 X	25	4-40 UNC Threaded insert	241 A 11780 X
37	4-40 UNC Threaded insert	242 A 11800 X	37	4-40 UNC Threaded insert	241 A 11790 X
50	4-40 UNC Threaded insert	242 A 15860 X	50	4-40 UNC Threaded insert	241 A 15970 X
09	M3 Threaded insert	242 A 11890 X	09	M3 Threaded insert	241 A 11880 X
15	M3 Threaded insert	242 A 11900 X	15	M3 Threaded insert	241 A 11890 X
25	M3 Threaded insert	242 A 11910 X	25	M3 Threaded insert	241 A 11900 X
37	M3 Threaded insert	242 A 11920 X	37	M3 Threaded insert	241 A 11910 X
50	M3 Threaded insert	242 A 15890 X	50	M3 Threaded insert	241 A 16000 X

## X-ON Electronics

Largest Supplier of Electrical and Electronic Components

*Click to view similar products for [D-Sub Standard Connectors](#) category:*

*Click to view products by [CONEC](#) manufacturer:*

Other Similar products are found below :

[56F711-015](#) [012-9507-004](#) [LV242999-142T12](#) [015-0341-000](#) [015-0349-000](#) [015-0372-005](#) [015-0372-008](#) [015-8755-001](#) [020419-0104](#) [012-0467-000](#) [012-0515-000](#) [012-9507-034](#) [012-9507-114](#) [020745-0008](#) [609-25P](#) [CT2-14S-2PCA34](#) [CT2-18-11PCAU](#) [CT2-36-15SC](#) [CT6-14S-2SC](#) [CT6E14SA7SC](#) [CT6E22-14PC](#) [CT6E22-14PS](#) [CT6E22-22PS](#) [M83513/01-FC](#) [M85049/48-3-2F](#) [6STD09PCM99B70X](#) [6STD09SCM99B30X](#) [6STD09SCT99S40X](#) [6STD15PCT99S40X](#) [6STD15SCM99B30X](#) [6STD15SCT99S40X](#) [6STF09PCM05B70X](#) [7-135760-9](#) [MC11E-10-6SN](#) [747552-3](#) [MD1-21PS](#) [MDM-15SCBRM7-F222](#) [MDM96517-699](#) [MDM96521-744](#) [MDVB1-21SL1](#) [MIK0-1-7SH003](#) [MIKQ6-7SH076](#) [MIKQ7-7PH077](#) [MIKQ7-7PH11](#) [MIKQ7-7PH32](#) [MIKQ9-7PH003](#) [MJSV-28SL61](#) [MKJ4A1F14-55S](#) [8-135760-3](#) [8STD09PCM99B30X](#)