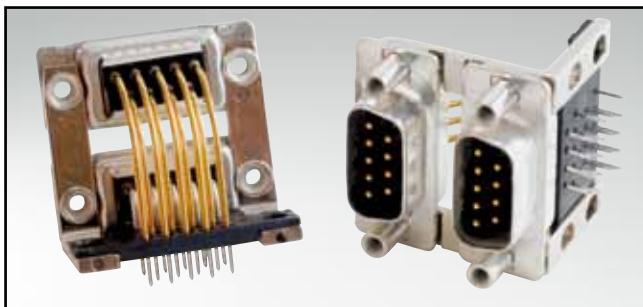


C-FILTER D-SUB STANDARD – DUAL PORT

Solder pin – Angled – Precision machined contacts – .780" / 19.05 mm connector spacing

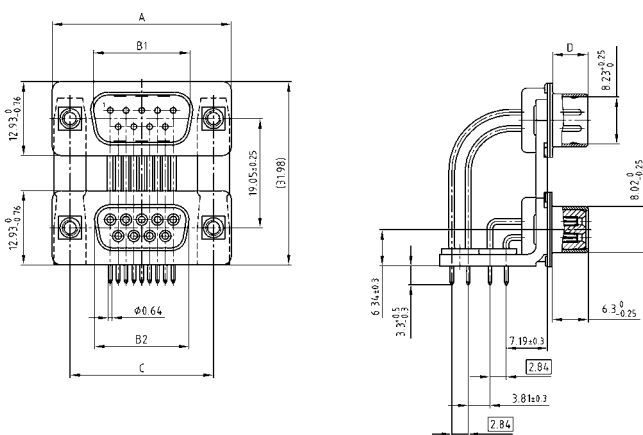


RoHS compliant – CSA listed, File No.: LR 115000-1 – UL listed, File No.: E202784

DESCRIPTION

- Variations: plug – plug; socket – socket; plug – socket
- Mounting styles:
 - with mounting bracket and 4-40 UNC threaded insert
 - with mounting bracket and 4-40 UNC front spacer
- Quality class 3 (also available in quality class 1)
- Shell: Steel tin plated (brass tin plated on request)

PRODUCT DRAWING

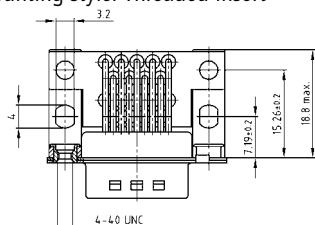


No. of pos.	A -0.76	B1 +0.25	B2 -0.25	C	D -0.30
2X 09	31.19	16.79	16.46	25.00 ^{+0.12} / _{-0.13}	6.12
2X 15	39.52	25.12	24.79	33.30 ^{+0.15} / _{-0.10}	6.12
2X 25	53.42	38.84	38.50	47.04 ^{+0.13} / _{-0.13}	5.99
2X 37	69.70	55.30	54.96	63.50 ^{+0.13} / _{-0.13}	5.99

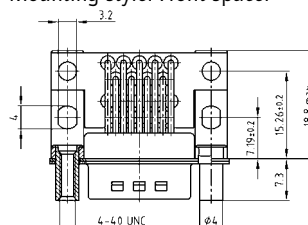
Graphically representation of only one variant!

PCB layout: Kat1iU5A / Kat1iU6A

Mounting style: Threaded insert



Mounting style: Front spacer



ORDER DATA

Capacitance 180 pF

VERSION WITH 4-40 UNC THREADED INSERT

No. of pos.	Design	Part Number
09/09	Plug upper / Plug bottom	241 A 17500 X
15/15	Plug upper / Plug bottom	241 A 17510 X
25/25	Plug upper / Plug bottom	241 A 17520 X
37/37	Plug upper / Plug bottom	241 A 17530 X
09/09	Plug upper / Socket bottom	241 A 17540 X
15/15	Plug upper / Socket bottom	241 A 17550 X
25/25	Plug upper / Socket bottom	241 A 17560 X
37/37	Plug upper / Socket bottom	241 A 17570 X
09/09	Socket upper / Socket bottom	242 A 22160 X
15/15	Socket upper / Socket bottom	242 A 22170 X
25/25	Socket upper / Socket bottom	242 A 22180 X
37/37	Socket upper / Socket bottom	242 A 22190 X
09/09	Socket upper / Plug bottom	242 A 22200 X
15/15	Socket upper / Plug bottom	242 A 22210 X
25/25	Socket upper / Plug bottom	242 A 22220 X
37/37	Socket upper / Plug bottom	242 A 22230 X

VERSION WITH 4-40 UNC FRONT SPACER

No. of pos.	Design	Part Number
09/09	Plug upper / Plug bottom	241 A 22380 X
15/15	Plug upper / Plug bottom	241 A 22390 X
25/25	Plug upper / Plug bottom	241 A 22400 X
37/37	Plug upper / Plug bottom	241 A 22410 X
09/09	Plug upper / Socket bottom	241 A 22420 X
15/15	Plug upper / Socket bottom	241 A 22430 X
25/25	Plug upper / Socket bottom	241 A 22440 X
37/37	Plug upper / Socket bottom	241 A 22450 X
09/09	Socket upper / Socket bottom	242 A 22240 X
15/15	Socket upper / Socket bottom	242 A 22250 X
25/25	Socket upper / Socket bottom	242 A 22260 X
37/37	Socket upper / Socket bottom	242 A 22270 X
09/09	Socket upper / Plug bottom	242 A 22280 X
15/15	Socket upper / Plug bottom	242 A 22290 X
25/25	Socket upper / Plug bottom	242 A 22300 X
37/37	Socket upper / Plug bottom	242 A 22310 X

C-FILTER D-SUB STANDARD – DUAL POR

Solder pin – Angled – Precision machined contacts – .780" / 19.05 mm connector spacing

ORDER DATA

Capacitance 370 pF

	VERSION WITH 4-40 UNC THREADED INSERT				VERSION WITH 4-40 UNC FRONT SPACER			
	No. of pos.	Design	Part Number		No. of pos.	Design	Part Number	
	09/09	Plug upper / Plug bottom	241 A 14610	X	09/09	Plug upper / Plug bottom	241 A 14850	X
	15/15	Plug upper / Plug bottom	241 A 14620	X	15/15	Plug upper / Plug bottom	241 A 14860	X
	25/25	Plug upper / Plug bottom	241 A 14630	X	25/25	Plug upper / Plug bottom	241 A 14870	X
	37/37	Plug upper / Plug bottom	241 A 14640	X	37/37	Plug upper / Plug bottom	241 A 14880	X
	09/09	Plug upper / Socket bottom	241 A 14730	X	09/09	Plug upper / Socket bottom	241 A 14970	X
	15/15	Plug upper / Socket bottom	241 A 14740	X	15/15	Plug upper / Socket bottom	241 A 14980	X
	25/25	Plug upper / Socket bottom	241 A 14750	X	25/25	Plug upper / Socket bottom	241 A 14990	X
	37/37	Plug upper / Socket bottom	241 A 14760	X	37/37	Plug upper / Socket bottom	241 A 15000	X
	09/09	Socket upper / Socket bottom	242 A 14500	X	09/09	Socket upper / Socket bottom	242 A 14740	X
	15/15	Socket upper / Socket bottom	242 A 14510	X	15/15	Socket upper / Socket bottom	242 A 14750	X
	25/25	Socket upper / Socket bottom	242 A 14520	X	25/25	Socket upper / Socket bottom	242 A 14760	X
	37/37	Socket upper / Socket bottom	242 A 14530	X	37/37	Socket upper / Socket bottom	242 A 14770	X
	09/09	Socket upper / Plug bottom	242 A 14620	X	09/09	Socket upper / Plug bottom	242 A 14860	X
	15/15	Socket upper / Plug bottom	242 A 14630	X	15/15	Socket upper / Plug bottom	242 A 14870	X
	25/25	Socket upper / Plug bottom	242 A 14640	X	25/25	Socket upper / Plug bottom	242 A 14880	X
	37/37	Socket upper / Plug bottom	242 A 14650	X	37/37	Socket upper / Plug bottom	242 A 14890	X

Capacitance 830 pF

	VERSION WITH 4-40 UNC THREADED INSERT				VERSION WITH 4-40 UNC FRONT SPACER			
	No. of pos.	Design	Part Number		No. of pos.	Design	Part Number	
	09/09	Plug upper / Plug bottom	241 A 14690	X	09/09	Plug upper / Plug bottom	241 A 14930	X
	15/15	Plug upper / Plug bottom	241 A 14700	X	15/15	Plug upper / Plug bottom	241 A 14940	X
	25/25	Plug upper / Plug bottom	241 A 14710	X	25/25	Plug upper / Plug bottom	241 A 14950	X
	37/37	Plug upper / Plug bottom	241 A 14720	X	37/37	Plug upper / Plug bottom	241 A 14960	X
	09/09	Plug upper / Socket bottom	241 A 14810	X	09/09	Plug upper / Socket bottom	241 A 15050	X
	15/15	Plug upper / Socket bottom	241 A 14820	X	15/15	Plug upper / Socket bottom	241 A 15060	X
	25/25	Plug upper / Socket bottom	241 A 14830	X	25/25	Plug upper / Socket bottom	241 A 15070	X
	37/37	Plug upper / Socket bottom	241 A 14840	X	37/37	Plug upper / Socket bottom	241 A 15080	X
	09/09	Socket upper / Socket bottom	242 A 14580	X	09/09	Socket upper / Socket bottom	242 A 14820	X
	15/15	Socket upper / Socket bottom	242 A 14590	X	15/15	Socket upper / Socket bottom	242 A 14830	X
	25/25	Socket upper / Socket bottom	242 A 14600	X	25/25	Socket upper / Socket bottom	242 A 14840	X
	37/37	Socket upper / Socket bottom	242 A 14610	X	37/37	Socket upper / Socket bottom	242 A 14850	X
	09/09	Socket upper / Plug bottom	242 A 14700	X	09/09	Socket upper / Plug bottom	242 A 14940	X
	15/15	Socket upper / Plug bottom	242 A 14710	X	15/15	Socket upper / Plug bottom	242 A 14950	X
	25/25	Socket upper / Plug bottom	242 A 14720	X	25/25	Socket upper / Plug bottom	242 A 14960	X
	37/37	Socket upper / Plug bottom	242 A 14730	X	37/37	Socket upper / Plug bottom	242 A 14970	X

Capacitance 1300 pF

	VERSION WITH 4-40 UNC THREADED INSERT				VERSION WITH 4-40 UNC FRONT SPACER			
	No. of pos.	Design	Part Number		No. of pos.	Design	Part Number	
	09/09	Plug upper / Plug bottom	241 A 14650	X	09/09	Plug upper / Plug bottom	241 A 14890	X
	15/15	Plug upper / Plug bottom	241 A 14660	X	15/15	Plug upper / Plug bottom	241 A 14900	X
	25/25	Plug upper / Plug bottom	241 A 14670	X	25/25	Plug upper / Plug bottom	241 A 14910	X
	37/37	Plug upper / Plug bottom	241 A 14680	X	37/37	Plug upper / Plug bottom	241 A 14920	X
	09/09	Plug upper / Socket bottom	241 A 14770	X	09/09	Plug upper / Socket bottom	241 A 15010	X
	15/15	Plug upper / Socket bottom	241 A 14780	X	15/15	Plug upper / Socket bottom	241 A 15020	X
	25/25	Plug upper / Socket bottom	241 A 14790	X	25/25	Plug upper / Socket bottom	241 A 15030	X
	37/37	Plug upper / Socket bottom	241 A 14800	X	37/37	Plug upper / Socket bottom	241 A 15040	X
	09/09	Socket upper / Socket bottom	242 A 14540	X	09/09	Socket upper / Socket bottom	242 A 14780	X
	15/15	Socket upper / Socket bottom	242 A 14550	X	15/15	Socket upper / Socket bottom	242 A 14790	X
	25/25	Socket upper / Socket bottom	242 A 14560	X	25/25	Socket upper / Socket bottom	242 A 14800	X
	37/37	Socket upper / Socket bottom	242 A 14570	X	37/37	Socket upper / Socket bottom	242 A 14810	X
	09/09	Socket upper / Plug bottom	242 A 14660	X	09/09	Socket upper / Plug bottom	242 A 14900	X
	15/15	Socket upper / Plug bottom	242 A 14670	X	15/15	Socket upper / Plug bottom	242 A 14910	X
	25/25	Socket upper / Plug bottom	242 A 14680	X	25/25	Socket upper / Plug bottom	242 A 14920	X
	37/37	Socket upper / Plug bottom	242 A 14690	X	37/37	Socket upper / Plug bottom	242 A 14930	X

X-ON Electronics

Largest Supplier of Electrical and Electronic Components

Click to view similar products for [D-Sub Dualport Connectors](#) category:

Click to view products by [CONEC](#) manufacturer:

Other Similar products are found below :

[787672-3](#) [164A15909X](#) [K42X-E15S/S-A4NJ](#) [K42X-E9SS-A4NJ](#) [242A14060X](#) [164A15819X](#) [DLS2SS5AN21X](#) [241A22450X](#) [242A14180X](#)
[241A14190X](#) [DLS4SS5AN21X](#) [178-037-513R491](#) [178-037-613R491](#) [178-009-413R571](#) [178-009-513R571](#) [178-009-613R491](#) [178-009-613R691](#) [178-015-513R571](#) [178-015-613R571](#) [178-025-513R571](#) [179-009-513R571](#) [179-009-613R571](#) [179-025-513R571](#) [179-037-513R571](#)
[K42X-E15S/S-A4N](#) [K42X-E9S/P-A4N](#) [L17H2220131](#) [178-015-513R491](#) [178-025-613R481](#) [178-025-613R571](#) [178-037-513R571](#) [178-037-513R671](#) [L17H2220120](#) [L17H2ED0130](#) [L17H1440130](#) [L17H1770231](#) [L17H2110120](#) [L17H2440120TM](#) [L17H1431134](#) [L17H1212130](#)
[L17H2212120](#) [L17H1222134](#) [L17H2662120TM](#) [L17H2550120](#) [L17H2440120](#) [L17H2440121](#) [L17H1120134](#) [L17H2120120](#) [L17H2120230](#)
[L17H1440134](#)