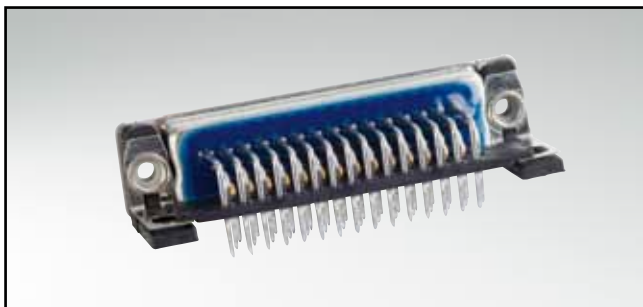


C-FILTER D-SUB HIGH DENSITY

Solder pin – Angled – .350"/7.98 mm – Precision machined contacts – Plastic bracket

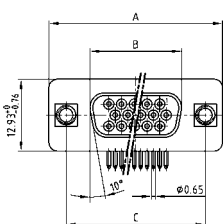


RoHS compliant – CSA listed, File No.: LR 115000-1 – UL listed, File No.: E202784

DESCRIPTION

- Mounting styles:
 - with mounting bracket, grounding strap and 4-40 UNC or M3 threaded insert
 - with mounting bracket, grounding strap and 4-40 UNC or M3 front spacer
- Quality class 3 (also available in quality class 1)
- Shell: Steel tin plated (brass tin plated on request)

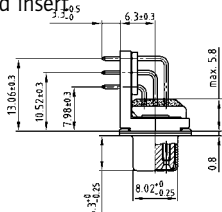
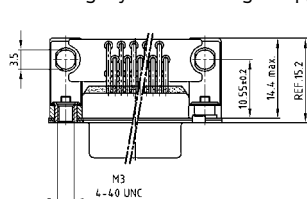
SOCKET CONNECTOR



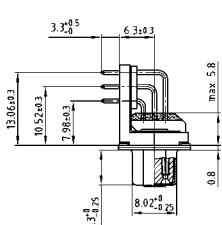
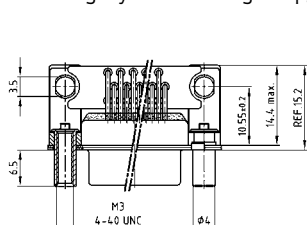
No. of pos.	A -0.76	B -0.25	C
15	31.19	16.46	25.00 ^{+0.12} / _{-0.13}
26	39.52	24.79	33.30 ^{+0.15} / _{-0.10}
44	53.42	38.50	47.04 ^{+0.13} / _{-0.10}
62	69.70	54.96	63.50 ^{+0.13} / _{-0.10}

PCB layout: Kat1iU1A

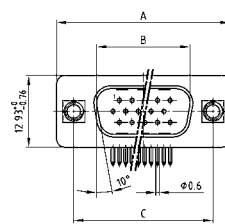
Mounting style: Grounding strap, threaded insert



Mounting style: Grounding strap, front spacer



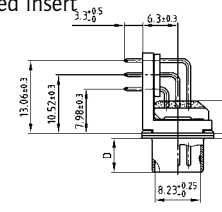
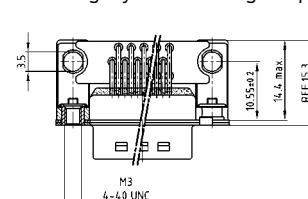
PLUG CONNECTOR



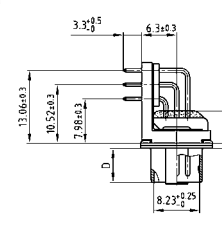
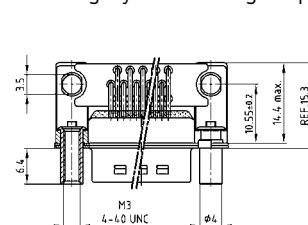
No. of pos.	A -0.76	B +0.25	C	D -0.3
15	31.19	16.79	25.00 ^{+0.12} / _{-0.13}	6.12
26	39.52	25.12	33.30 ^{+0.15} / _{-0.10}	6.12
44	53.42	38.84	47.04 ^{+0.13} / _{-0.10}	5.99
62	69.70	55.30	63.50 ^{+0.13} / _{-0.10}	5.99

PCB layout: Kat1iU2A

Mounting style: Grounding strap, threaded insert



Mounting style: Grounding strap, front spacer



ORDER DATA

Capacitance 180 pF

SOCKET CONNECTOR

No. of pos.	Mounting style	Part Number
15	Grounding strap / 4-40 UNC Threaded insert	242 A 27860 X
26	Grounding strap / 4-40 UNC Threaded insert	242 A 27870 X
44	Grounding strap / 4-40 UNC Threaded insert	242 A 27880 X
62	Grounding strap / 4-40 UNC Threaded insert	242 A 27890 X
15	Grounding strap / M3 Threaded insert	242 A 27900 X
26	Grounding strap / M3 Threaded insert	242 A 27910 X
44	Grounding strap / M3 Threaded insert	242 A 27920 X
62	Grounding strap / M3 Threaded insert	242 A 27930 X
15	Grounding strap / 4-40 UNC Front spacer	242 A 27940 X
26	Grounding strap / 4-40 UNC Front spacer	242 A 27950 X
44	Grounding strap / 4-40 UNC Front spacer	242 A 27960 X
62	Grounding strap / 4-40 UNC Front spacer	242 A 27970 X
15	Grounding strap / M3 Front spacer	242 A 27980 X
26	Grounding strap / M3 Front spacer	242 A 27990 X
44	Grounding strap / M3 Front spacer	242 A 28000 X
62	Grounding strap / M3 Front spacer	242 A 28010 X

PLUG CONNECTOR

No. of pos.	Mounting style	Part Number
15	Grounding strap / 4-40 UNC Threaded insert	241 A 27960 X
26	Grounding strap / 4-40 UNC Threaded insert	241 A 27970 X
44	Grounding strap / 4-40 UNC Threaded insert	241 A 27980 X
62	Grounding strap / 4-40 UNC Threaded insert	241 A 27990 X
15	Grounding strap / M3 Threaded insert	241 A 28000 X
26	Grounding strap / M3 Threaded insert	241 A 28010 X
44	Grounding strap / M3 Threaded insert	241 A 28020 X
62	Grounding strap / M3 Threaded insert	241 A 28030 X
15	Grounding strap / 4-40 UNC Front spacer	241 A 28040 X
26	Grounding strap / 4-40 UNC Front spacer	241 A 28050 X
44	Grounding strap / 4-40 UNC Front spacer	241 A 28060 X
62	Grounding strap / 4-40 UNC Front spacer	241 A 28070 X
15	Grounding strap / M3 Front spacer	241 A 28080 X
26	Grounding strap / M3 Front spacer	241 A 28090 X
44	Grounding strap / M3 Front spacer	241 A 28100 X
62	Grounding strap / M3 Front spacer	241 A 28110 X

C-FILTER D-SUB HIGH DENSITY

Solder pin – Angled – .350" / 7.98 mm – Precision machined contacts – Plastic bracket

ORDER DATA

Capacitance 370 pF

SOCKET CONNECTOR			PLUG CONNECTOR		
No. of pos.	Mounting style	Part Number	No. of pos.	Mounting style	Part Number
15	Grounding strap / 4-40 UNC Threaded insert	242 A 18690 X	15	Grounding strap / 4-40 UNC Threaded insert	241 A 17100 X
26	Grounding strap / 4-40 UNC Threaded insert	242 A 18700 X	26	Grounding strap / 4-40 UNC Threaded insert	241 A 17110 X
44	Grounding strap / 4-40 UNC Threaded insert	242 A 18710 X	44	Grounding strap / 4-40 UNC Threaded insert	241 A 17120 X
62	Grounding strap / 4-40 UNC Threaded insert	242 A 18720 X	62	Grounding strap / 4-40 UNC Threaded insert	241 A 17130 X
15	Grounding strap / M3 Threaded insert	242 A 18770 X	15	Grounding strap / M3 Threaded insert	241 A 17180 X
26	Grounding strap / M3 Threaded insert	242 A 18780 X	26	Grounding strap / M3 Threaded insert	241 A 17190 X
44	Grounding strap / M3 Threaded insert	242 A 18790 X	44	Grounding strap / M3 Threaded insert	241 A 17200 X
62	Grounding strap / M3 Threaded insert	242 A 18800 X	62	Grounding strap / M3 Threaded insert	241 A 17210 X
15	Grounding strap / 4-40 UNC Front spacer	242 A 18850 X	15	Grounding strap / 4-40 UNC Front spacer	241 A 17260 X
26	Grounding strap / 4-40 UNC Front spacer	242 A 18860 X	26	Grounding strap / 4-40 UNC Front spacer	241 A 17270 X
44	Grounding strap / 4-40 UNC Front spacer	242 A 18870 X	44	Grounding strap / 4-40 UNC Front spacer	241 A 17280 X
62	Grounding strap / 4-40 UNC Front spacer	242 A 18880 X	62	Grounding strap / 4-40 UNC Front spacer	241 A 17290 X
15	Grounding strap / M3 Front spacer	242 A 18930 X	15	Grounding strap / M3 Front spacer	241 A 17340 X
26	Grounding strap / M3 Front spacer	242 A 18940 X	26	Grounding strap / M3 Front spacer	241 A 17350 X
44	Grounding strap / M3 Front spacer	242 A 18950 X	44	Grounding strap / M3 Front spacer	241 A 17360 X
62	Grounding strap / M3 Front spacer	242 A 18960 X	62	Grounding strap / M3 Front spacer	241 A 17370 X

Capacitance 830 pF

SOCKET CONNECTOR			PLUG CONNECTOR		
No. of pos.	Mounting style	Part Number	No. of pos.	Mounting style	Part Number
15	Grounding strap / 4-40 UNC Threaded insert	242 A 18730 X	15	Grounding strap / 4-40 UNC Threaded insert	241 A 17140 X
26	Grounding strap / 4-40 UNC Threaded insert	242 A 18740 X	26	Grounding strap / 4-40 UNC Threaded insert	241 A 17150 X
44	Grounding strap / 4-40 UNC Threaded insert	242 A 18750 X	44	Grounding strap / 4-40 UNC Threaded insert	241 A 17160 X
62	Grounding strap / 4-40 UNC Threaded insert	242 A 18760 X	62	Grounding strap / 4-40 UNC Threaded insert	241 A 17170 X
15	Grounding strap / M3 Threaded insert	242 A 18810 X	15	Grounding strap / M3 Threaded insert	241 A 17220 X
26	Grounding strap / M3 Threaded insert	242 A 18820 X	26	Grounding strap / M3 Threaded insert	241 A 17230 X
44	Grounding strap / M3 Threaded insert	242 A 18830 X	44	Grounding strap / M3 Threaded insert	241 A 17240 X
62	Grounding strap / M3 Threaded insert	242 A 18840 X	62	Grounding strap / M3 Threaded insert	241 A 17250 X
15	Grounding strap / 4-40 UNC Front spacer	242 A 18890 X	15	Grounding strap / 4-40 UNC Front spacer	241 A 17300 X
26	Grounding strap / 4-40 UNC Front spacer	242 A 18900 X	26	Grounding strap / 4-40 UNC Front spacer	241 A 17310 X
44	Grounding strap / 4-40 UNC Front spacer	242 A 18910 X	44	Grounding strap / 4-40 UNC Front spacer	241 A 17320 X
62	Grounding strap / 4-40 UNC Front spacer	242 A 18920 X	62	Grounding strap / 4-40 UNC Front spacer	241 A 17330 X
15	Grounding strap / M3 Front spacer	242 A 18970 X	15	Grounding strap / M3 Front spacer	241 A 17380 X
26	Grounding strap / M3 Front spacer	242 A 18980 X	26	Grounding strap / M3 Front spacer	241 A 17390 X
44	Grounding strap / M3 Front spacer	242 A 18990 X	44	Grounding strap / M3 Front spacer	241 A 17400 X
62	Grounding strap / M3 Front spacer	242 A 19000 X	62	Grounding strap / M3 Front spacer	241 A 17410 X

X-ON Electronics

Largest Supplier of Electrical and Electronic Components

Click to view similar products for [D-Sub High Density Connectors](#) category:

Click to view products by [CONEC](#) manufacturer:

Other Similar products are found below :

[97-3250-11](#) [163A17089X](#) [164A17199X](#) [164C18629X](#) [L717HDB44POL2R210](#) [L717HDEH15POL2](#) [L777HDE15P](#) [L77HDE15SC309](#)
[163A16759X](#) [163A16839X](#) [163A16989X](#) [163A17079X](#) [164A17329X](#) [164A18219X](#) [241A16440X](#) [241A16550X](#) [241A16680X](#)
[241A20810X](#) [241A25740X](#) [CT25-44P](#) [MDBE15PE766](#) [L177HDE15SOL2RM23](#) [L177HRC62SVFM](#) [L177HRCG62S](#)
[L717HDEG15POL2RM5](#) [L77HDA26SVF](#) [L77HDE15SD1CO](#) [L77HDEH15SOL2RM832](#) [DAMA-15S-WS](#) [443895-3](#) [106698-1](#) [280-](#)
[012K2C](#) [DBMV13H3SNA197](#) [L177HRB44S](#) [164A17039X](#) [09562004701510](#) [L777HRC62P](#) [241A17960X](#) [164A18269X](#) [280-019S1S9MEN](#)
[L777HDEG15P](#) [280-018P3S25MEGN](#) [206504-2](#) [40-9415HDSP](#) [40-9515HDSP](#) [2057140-1](#) [C115370-6002](#) [DFMA104SNMBFR172FR022](#)
[HDC9F200E2S](#) [L717HDAG26POL2RM8](#)