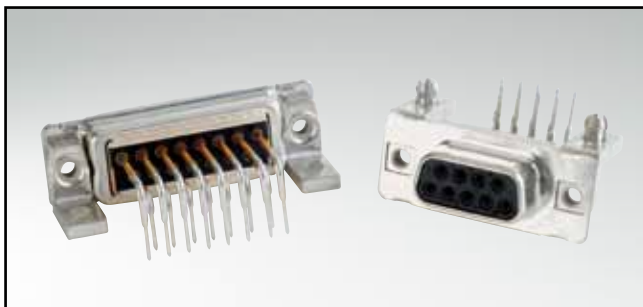


C-FILTER D-SUB STANDARD

Solder pin – Angled – .590" / 14.19 mm – Precision machined contacts – Short metal bracket



RoHS compliant – CSA listed, File No.: LR 115000-1 – UL listed, File No.: E202784

DESCRIPTION

- Mounting styles:
 - Mounting bracket, 4-40 UNC threaded insert
 - Mounting bracket, PCB clip and 4-40 UNC threaded insert
- Quality class 3 (also available in quality class 1)
- Shell: Steel tin plated (brass tin plated on request)

SOCKET CONNECTOR



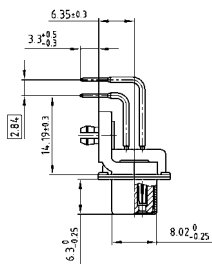
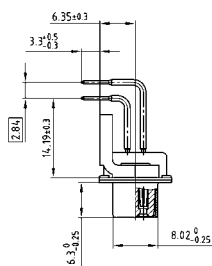
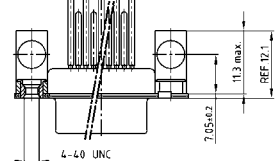
No. of pos.	A -0.76	B -0.25	C
09	31.19	16.46	25.00 ^{+0.12} / _{-0.13}
15	39.52	24.79	33.30 ^{+0.15} / _{-0.10}
25	53.42	38.50	47.04 ^{+0.13} / _{-0.13}
37	69.70	54.96	63.50 ^{+0.13} / _{-0.13}

PCB layout: Kat1kGXA

Mounting style: Threaded insert



Mounting style: PCB clip, threaded insert



PLUG CONNECTOR



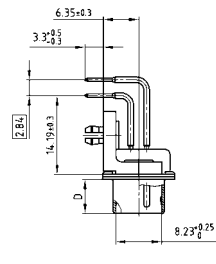
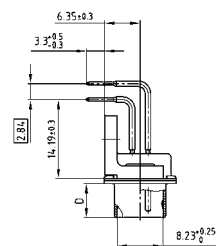
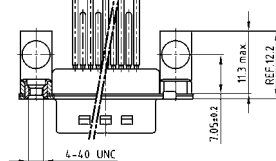
No. of pos.	A -0.76	B +0.25	C	D -0.3
09	31.19	16.79	25.00 ^{+0.12} / _{-0.13}	6.12
15	39.52	25.12	33.30 ^{+0.15} / _{-0.10}	6.12
25	53.42	38.84	47.04 ^{+0.13} / _{-0.13}	5.99
37	69.70	55.30	63.50 ^{+0.13} / _{-0.13}	5.99

PCB layout: Kat1kGYA

Mounting style: Threaded insert



Mounting style: PCB clip, threaded insert



ORDER DATA

Capacitance 180 pF

SOCKET CONNECTOR			PLUG CONNECTOR		
No. of pos.	Mounting style 4-40 UNC	Part Number	No. of pos.	Mounting style 4-40 UNC	Part Number
09	Threaded insert	242 A 20290 X	09	Threaded insert	241 A 20440 X
15	Threaded insert	242 A 20300 X	15	Threaded insert	241 A 20450 X
25	Threaded insert	242 A 20310 X	25	Threaded insert	241 A 20460 X
37	Threaded insert	242 A 20320 X	37	Threaded insert	241 A 20470 X
09	PCB clip / Threaded insert	242 A 20450 X	09	PCB clip / Threaded insert	241 A 20600 X
15	PCB clip / Threaded insert	242 A 20460 X	15	PCB clip / Threaded insert	241 A 20610 X
25	PCB clip / Threaded insert	242 A 20470 X	25	PCB clip / Threaded insert	241 A 20620 X
37	PCB clip / Threaded insert	242 A 20480 X	37	PCB clip / Threaded insert	241 A 20630 X

PCB clip .122" / 3.1 ± .004" / 0.10 mm hole diameter and .063" / 1.6 mm circuit board thickness

C-FILTER D-SUB STANDARD

Solder pin – Angled – .590" / 14.19 mm – Precision machined contacts – Short metal bracket

ORDER DATA

Capacitance 370 pF

SOCKET CONNECTOR			PLUG CONNECTOR		
No. of pos.	Mounting style 4-40 UNC	Part Number	No. of pos.	Mounting style 4-40 UNC	Part Number
09	Threaded insert	242 A 20330 X	09	Threaded insert	241 A 20480 X
15	Threaded insert	242 A 20340 X	15	Threaded insert	241 A 20490 X
25	Threaded insert	242 A 20350 X	25	Threaded insert	241 A 20500 X
37	Threaded insert	242 A 20360 X	37	Threaded insert	241 A 20510 X
09	PCB clip / Threaded insert	242 A 20490 X	09	PCB clip / Threaded insert	241 A 20640 X
15	PCB clip / Threaded insert	242 A 20500 X	15	PCB clip / Threaded insert	241 A 20650 X
25	PCB clip / Threaded insert	242 A 20510 X	25	PCB clip / Threaded insert	241 A 20660 X
37	PCB clip / Threaded insert	242 A 20520 X	37	PCB clip / Threaded insert	241 A 20670 X

Capacitance 830 pF

SOCKET CONNECTOR			PLUG CONNECTOR		
No. of pos.	Mounting style 4-40 UNC	Part Number	No. of pos.	Mounting style 4-40 UNC	Part Number
09	Threaded insert	242 A 20370 X	09	Threaded insert	241 A 20520 X
15	Threaded insert	242 A 20380 X	15	Threaded insert	241 A 20530 X
25	Threaded insert	242 A 20390 X	25	Threaded insert	241 A 20540 X
37	Threaded insert	242 A 20400 X	37	Threaded insert	241 A 20550 X
09	PCB clip / Threaded insert	242 A 20530 X	09	PCB clip / Threaded insert	241 A 20680 X
15	PCB clip / Threaded insert	242 A 20540 X	15	PCB clip / Threaded insert	241 A 20690 X
25	PCB clip / Threaded insert	242 A 20550 X	25	PCB clip / Threaded insert	241 A 20700 X
37	PCB clip / Threaded insert	242 A 20560 X	37	PCB clip / Threaded insert	241 A 20710 X

Capacitance 1300 pF

SOCKET CONNECTOR			PLUG CONNECTOR		
No. of pos.	Mounting style 4-40 UNC	Part Number	No. of pos.	Mounting style 4-40 UNC	Part Number
09	Threaded insert	242 A 20410 X	09	Threaded insert	241 A 20560 X
15	Threaded insert	242 A 20420 X	15	Threaded insert	241 A 20570 X
25	Threaded insert	242 A 20430 X	25	Threaded insert	241 A 20580 X
37	Threaded insert	242 A 20440 X	37	Threaded insert	241 A 20590 X
09	PCB clip / Threaded insert	242 A 20570 X	09	PCB clip / Threaded insert	241 A 20720 X
15	PCB clip / Threaded insert	242 A 20580 X	15	PCB clip / Threaded insert	241 A 20730 X
25	PCB clip / Threaded insert	242 A 20590 X	25	PCB clip / Threaded insert	241 A 20740 X
37	PCB clip / Threaded insert	242 A 20600 X	37	PCB clip / Threaded insert	241 A 20750 X

PCB clip .122" / 3.1 ± .004" / 0.10 mm hole diameter and .063" / 1.6 mm circuit board thickness

X-ON Electronics

Largest Supplier of Electrical and Electronic Components

Click to view similar products for [D-Sub Standard Connectors](#) category:

Click to view products by [CONEC](#) manufacturer:

Other Similar products are found below :

[56F711-015](#) [012-9507-004](#) [LV242999-142T12](#) [015-0341-000](#) [015-0349-000](#) [015-0372-005](#) [015-0372-008](#) [015-8755-001](#) [020419-0104](#) [012-0467-000](#) [012-0515-000](#) [012-9507-034](#) [012-9507-114](#) [020745-0008](#) [609-25P](#) [M24308/2-23Z](#) [M24308315F](#) [CT2-14S-2PCA34](#) [CT2-18-11PCAU](#) [CT2-36-15SC](#) [CT6-14S-2SC](#) [CT6E14SA7SC](#) [CT6E22-14PC](#) [CT6E22-14PS](#) [CT6E22-22PS](#) [M83513/01-FC](#) [M85049/48-3-2F](#) [6STD09PCM99B70X](#) [6STD09SCM99B30X](#) [6STD09SCT99S40X](#) [6STD15PCT99S40X](#) [6STD15SCM99B30X](#) [6STD15SCT99S40X](#) [6STF09PCM05B70X](#) [7-135760-9](#) [MC11E-10-6SN](#) [747552-3](#) [MD1-21PS](#) [MDM-15SCBRM7-F222](#) [MDM96517-699](#) [MDM96521-744](#) [MDVB1-21SL1](#) [MIK0-1-7SH003](#) [MIKQ6-7SH076](#) [MIKQ7-7PH077](#) [MIKQ7-7PH11](#) [MIKQ7-7PH32](#) [MIKQ9-7PH003](#) [MJSV-28SL61](#) [MKJ4A1F14-55S](#)