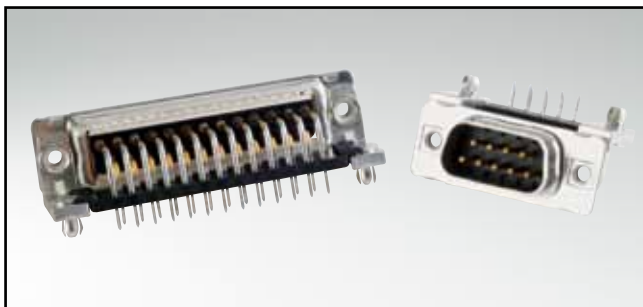


C-FILTER D-SUB STANDARD

Solder pin – Angled – .370" / 9.4 mm – Precision machined contacts – Metal bracket

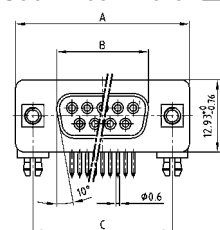


RoHS compliant – CSA listed, File No.: LR 115000-1 – UL listed, File No.: E202784

DESCRIPTION

- Mounting styles:
 - Mounting bracket with PCB clip and 4-40 UNC or M3 threaded insert
 - Mounting bracket with PCB clip and 4-40 UNC or M3 front spacer
- Quality class 3 (also available in quality class 1)
- Shell: Steel tin plated (brass tin plated on request)

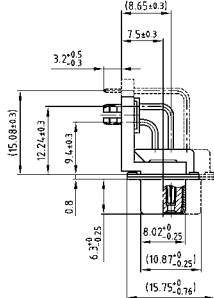
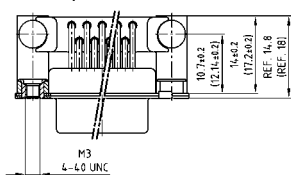
SOCKET CONNECTOR



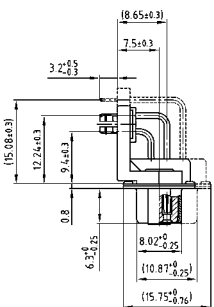
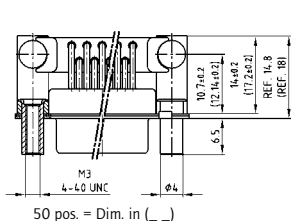
No. of pos.	A -0.76	B -0.25	C
09	31.19	16.46	25.00 ^{+0.12} _{-0.13}
15	39.52	24.79	33.30 ^{+0.15} _{-0.10}
25	53.42	38.50	47.04 ^{+0.13}
37	69.70	54.96	63.50 ^{+0.13}
50	67.31	52.55	61.10 ^{+0.14} _{-0.11}

PCB layout: Kat1kGGA

Mounting style:
PCB clip, threaded insert



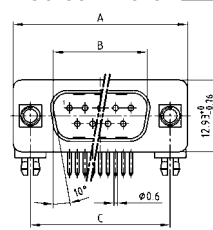
Mounting style:
PCB clip, front spacer



50 pos. = Dim. in (_)

ORDER DATA

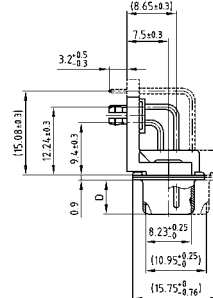
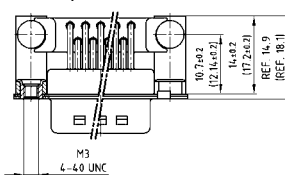
PLUG CONNECTOR



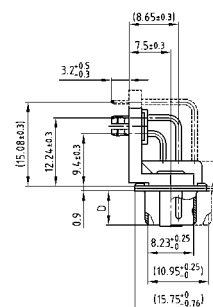
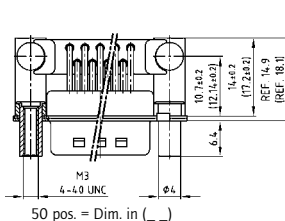
No. of pos.	A -0.76	B -0.25	C	D -0.3
09	31.19	16.79	25.00 ^{+0.12} _{-0.13}	6.12
15	39.52	25.12	33.30 ^{+0.15} _{-0.10}	6.12
25	53.42	38.84	47.04 ^{+0.13}	5.99
37	69.70	55.30	63.50 ^{+0.13}	5.99
50	67.31	52.68	61.10 ^{+0.14} _{-0.11}	5.99

PCB layout: Kat1kGHA

Mounting style:
PCB clip, threaded insert



Mounting style:
PCB clip, front spacer



50 pos. = Dim. in (_)

Capacitance 180 pF

SOCKET CONNECTOR

No. of pos.	Mounting style	Part Number
09	PCB clip / 4-40 UNC Threaded insert	242 A 21410 X
15	PCB clip / 4-40 UNC Threaded insert	242 A 21420 X
25	PCB clip / 4-40 UNC Threaded insert	242 A 21430 X
37	PCB clip / 4-40 UNC Threaded insert	242 A 21440 X
50	PCB clip / 4-40 UNC Threaded insert	242 A 27220 X
09	PCB clip / M3 Threaded insert	242 A 21570 X
15	PCB clip / M3 Threaded insert	242 A 21580 X
25	PCB clip / M3 Threaded insert	242 A 21590 X
37	PCB clip / M3 Threaded insert	242 A 21600 X
50	PCB clip / M3 Threaded insert	242 A 27260 X
09	PCB clip / 4-40 UNC Front spacer	242 A 22400 X
15	PCB clip / 4-40 UNC Front spacer	242 A 22410 X
25	PCB clip / 4-40 UNC Front spacer	242 A 22420 X
37	PCB clip / 4-40 UNC Front spacer	242 A 22430 X
50	PCB clip / 4-40 UNC Front spacer	242 A 27300 X
09	PCB clip / M3 Front spacer	242 A 22560 X
15	PCB clip / M3 Front spacer	242 A 22570 X
25	PCB clip / M3 Front spacer	242 A 22580 X
37	PCB clip / M3 Front spacer	242 A 22590 X
50	PCB clip / M3 Front spacer	242 A 27340 X

PLUG CONNECTOR

No. of pos.	Mounting style	Part Number
09	PCB clip / 4-40 UNC Threaded insert	241 A 21560 X
15	PCB clip / 4-40 UNC Threaded insert	241 A 21570 X
25	PCB clip / 4-40 UNC Threaded insert	241 A 21580 X
37	PCB clip / 4-40 UNC Threaded insert	241 A 21590 X
50	PCB clip / 4-40 UNC Threaded insert	241 A 27320 X
09	PCB clip / M3 Threaded insert	241 A 21720 X
15	PCB clip / M3 Threaded insert	241 A 21730 X
25	PCB clip / M3 Threaded insert	241 A 21740 X
37	PCB clip / M3 Threaded insert	241 A 21750 X
50	PCB clip / M3 Threaded insert	241 A 27360 X
09	PCB clip / 4-40 UNC Front spacer	241 A 22500 X
15	PCB clip / 4-40 UNC Front spacer	241 A 22510 X
25	PCB clip / 4-40 UNC Front spacer	241 A 22520 X
37	PCB clip / 4-40 UNC Front spacer	241 A 22530 X
50	PCB clip / 4-40 UNC Front spacer	241 A 27400 X
09	PCB clip / M3 Front spacer	241 A 22660 X
15	PCB clip / M3 Front spacer	241 A 22670 X
25	PCB clip / M3 Front spacer	241 A 22680 X
37	PCB clip / M3 Front spacer	241 A 22690 X
50	PCB clip / M3 Front spacer	241 A 27440 X

PCB clip .122" / 3.1 ± .004" / 0.10 mm hole diameter and .063" / 1.6 mm circuit board thickness

C-FILTER D-SUB STANDARD

Solder pin – Angled – .370" / 9.4 mm – Precision machined contacts – Metal bracket

ORDER DATA

Capacitance 370 pF			Capacitance 370 pF		
SOCKET CONNECTOR			PLUG CONNECTOR		
No. of pos.	Mounting style	Part Number	No. of pos.	Mounting style	Part Number
09	PCB clip / 4-40 UNC Threaded insert	242 A 21450 X	09	PCB clip / 4-40 UNC Threaded insert	241 A 21600 X
15	PCB clip / 4-40 UNC Threaded insert	242 A 21460 X	15	PCB clip / 4-40 UNC Threaded insert	241 A 21610 X
25	PCB clip / 4-40 UNC Threaded insert	242 A 21470 X	25	PCB clip / 4-40 UNC Threaded insert	241 A 21620 X
37	PCB clip / 4-40 UNC Threaded insert	242 A 21480 X	37	PCB clip / 4-40 UNC Threaded insert	241 A 21630 X
50	PCB clip / 4-40 UNC Threaded insert	242 A 27230 X	50	PCB clip / 4-40 UNC Threaded insert	241 A 27330 X
09	PCB clip / M3 Threaded insert	242 A 21610 X	09	PCB clip / M3 Threaded insert	241 A 21760 X
15	PCB clip / M3 Threaded insert	242 A 21620 X	15	PCB clip / M3 Threaded insert	241 A 21770 X
25	PCB clip / M3 Threaded insert	242 A 21630 X	25	PCB clip / M3 Threaded insert	241 A 21780 X
37	PCB clip / M3 Threaded insert	242 A 21640 X	37	PCB clip / M3 Threaded insert	241 A 21790 X
50	PCB clip / M3 Threaded insert	242 A 27270 X	50	PCB clip / M3 Threaded insert	241 A 27370 X
09	PCB clip / 4-40 UNC Front spacer	242 A 22440 X	09	PCB clip / 4-40 UNC Front spacer	241 A 22540 X
15	PCB clip / 4-40 UNC Front spacer	242 A 22450 X	15	PCB clip / 4-40 UNC Front spacer	241 A 22550 X
25	PCB clip / 4-40 UNC Front spacer	242 A 22460 X	25	PCB clip / 4-40 UNC Front spacer	241 A 22560 X
37	PCB clip / 4-40 UNC Front spacer	242 A 22470 X	37	PCB clip / 4-40 UNC Front spacer	241 A 22570 X
50	PCB clip / 4-40 UNC Front spacer	242 A 27310 X	50	PCB clip / 4-40 UNC Front spacer	241 A 27410 X
09	PCB clip / M3 Front spacer	242 A 22600 X	09	PCB clip / M3 Front spacer	241 A 22700 X
15	PCB clip / M3 Front spacer	242 A 22610 X	15	PCB clip / M3 Front spacer	241 A 22710 X
25	PCB clip / M3 Front spacer	242 A 22620 X	25	PCB clip / M3 Front spacer	241 A 22720 X
37	PCB clip / M3 Front spacer	242 A 22630 X	37	PCB clip / M3 Front spacer	241 A 22730 X
50	PCB clip / M3 Front spacer	242 A 27350 X	50	PCB clip / M3 Front spacer	241 A 27450 X

Capacitance 830 pF			Capacitance 830 pF		
SOCKET CONNECTOR			PLUG CONNECTOR		
No. of pos.	Mounting style	Part Number	No. of pos.	Mounting style	Part Number
09	PCB clip / 4-40 UNC Threaded insert	242 A 21490 X	09	PCB clip / 4-40 UNC Threaded insert	241 A 21640 X
15	PCB clip / 4-40 UNC Threaded insert	242 A 21500 X	15	PCB clip / 4-40 UNC Threaded insert	241 A 21650 X
25	PCB clip / 4-40 UNC Threaded insert	242 A 21510 X	25	PCB clip / 4-40 UNC Threaded insert	241 A 21660 X
37	PCB clip / 4-40 UNC Threaded insert	242 A 21520 X	37	PCB clip / 4-40 UNC Threaded insert	241 A 21670 X
50	PCB clip / 4-40 UNC Threaded insert	242 A 27240 X	50	PCB clip / 4-40 UNC Threaded insert	241 A 27340 X
09	PCB clip / M3 Threaded insert	242 A 21650 X	09	PCB clip / M3 Threaded insert	241 A 21800 X
15	PCB clip / M3 Threaded insert	242 A 21660 X	15	PCB clip / M3 Threaded insert	241 A 21810 X
25	PCB clip / M3 Threaded insert	242 A 21670 X	25	PCB clip / M3 Threaded insert	241 A 21820 X
37	PCB clip / M3 Threaded insert	242 A 21680 X	37	PCB clip / M3 Threaded insert	241 A 21830 X
50	PCB clip / M3 Threaded insert	242 A 27280 X	50	PCB clip / M3 Threaded insert	241 A 27380 X
09	PCB clip / 4-40 UNC Front spacer	242 A 22480 X	09	PCB clip / 4-40 UNC Front spacer	241 A 22580 X
15	PCB clip / 4-40 UNC Front spacer	242 A 22490 X	15	PCB clip / 4-40 UNC Front spacer	241 A 22590 X
25	PCB clip / 4-40 UNC Front spacer	242 A 22500 X	25	PCB clip / 4-40 UNC Front spacer	241 A 22600 X
37	PCB clip / 4-40 UNC Front spacer	242 A 22510 X	37	PCB clip / 4-40 UNC Front spacer	241 A 22610 X
50	PCB clip / 4-40 UNC Front spacer	242 A 27320 X	50	PCB clip / 4-40 UNC Front spacer	241 A 27420 X
09	PCB clip / M3 Front spacer	242 A 22640 X	09	PCB clip / M3 Front spacer	241 A 22740 X
15	PCB clip / M3 Front spacer	242 A 22650 X	15	PCB clip / M3 Front spacer	241 A 22750 X
25	PCB clip / M3 Front spacer	242 A 22660 X	25	PCB clip / M3 Front spacer	241 A 22760 X
37	PCB clip / M3 Front spacer	242 A 22670 X	37	PCB clip / M3 Front spacer	241 A 22770 X
50	PCB clip / M3 Front spacer	242 A 27360 X	50	PCB clip / M3 Front spacer	241 A 27460 X

Capacitance 1300 pF			Capacitance 1300 pF		
SOCKET CONNECTOR			PLUG CONNECTOR		
No. of pos.	Mounting style	Part Number	No. of pos.	Mounting style	Part Number
09	PCB clip / 4-40 UNC Threaded insert	242 A 21530 X	09	PCB clip / 4-40 UNC Threaded insert	241 A 21680 X
15	PCB clip / 4-40 UNC Threaded insert	242 A 21540 X	15	PCB clip / 4-40 UNC Threaded insert	241 A 21690 X
25	PCB clip / 4-40 UNC Threaded insert	242 A 21550 X	25	PCB clip / 4-40 UNC Threaded insert	241 A 21700 X
37	PCB clip / 4-40 UNC Threaded insert	242 A 21560 X	37	PCB clip / 4-40 UNC Threaded insert	241 A 21710 X
50	PCB clip / 4-40 UNC Threaded insert	242 A 27250 X	50	PCB clip / 4-40 UNC Threaded insert	241 A 27350 X
09	PCB clip / M3 Threaded insert	242 A 21690 X	09	PCB clip / M3 Threaded insert	241 A 21840 X
15	PCB clip / M3 Threaded insert	242 A 21700 X	15	PCB clip / M3 Threaded insert	241 A 21850 X
25	PCB clip / M3 Threaded insert	242 A 21710 X	25	PCB clip / M3 Threaded insert	241 A 21860 X
37	PCB clip / M3 Threaded insert	242 A 21720 X	37	PCB clip / M3 Threaded insert	241 A 21870 X
50	PCB clip / M3 Threaded insert	242 A 27290 X	50	PCB clip / M3 Threaded insert	241 A 27390 X
09	PCB clip / 4-40 UNC Front spacer	242 A 22520 X	09	PCB clip / 4-40 UNC Front spacer	241 A 22620 X
15	PCB clip / 4-40 UNC Front spacer	242 A 22530 X	15	PCB clip / 4-40 UNC Front spacer	241 A 22630 X
25	PCB clip / 4-40 UNC Front spacer	242 A 22540 X	25	PCB clip / 4-40 UNC Front spacer	241 A 22640 X
37	PCB clip / 4-40 UNC Front spacer	242 A 22550 X	37	PCB clip / 4-40 UNC Front spacer	241 A 22650 X
50	PCB clip / 4-40 UNC Front spacer	242 A 27330 X	50	PCB clip / 4-40 UNC Front spacer	241 A 27430 X
09	PCB clip / M3 Front spacer	242 A 22680 X	09	PCB clip / M3 Front spacer	241 A 22780 X
15	PCB clip / M3 Front spacer	242 A 22690 X	15	PCB clip / M3 Front spacer	241 A 22790 X
25	PCB clip / M3 Front spacer	242 A 22700 X	25	PCB clip / M3 Front spacer	241 A 22800 X
37	PCB clip / M3 Front spacer	242 A 22710 X	37	PCB clip / M3 Front spacer	241 A 22810 X
50	PCB clip / M3 Front spacer	242 A 27370 X	50	PCB clip / M3 Front spacer	241 A 27470 X

PCB clip .122"/3.1 ± .004"/0.10 mm hole diameter and .063"/1.6 mm circuit board thickness

X-ON Electronics

Largest Supplier of Electrical and Electronic Components

Click to view similar products for [D-Sub Standard Connectors](#) category:

Click to view products by [CONEC](#) manufacturer:

Other Similar products are found below :

[56F711-015](#) [012-9507-004](#) [LV242999-142T12](#) [015-0341-000](#) [015-0349-000](#) [015-0372-005](#) [015-0372-008](#) [015-8755-001](#) [020419-0104](#) [012-0467-000](#) [012-0515-000](#) [012-9507-034](#) [012-9507-114](#) [020745-0008](#) [609-25P](#) [M24308/2-23Z](#) [M24308315F](#) [CT2-14S-2PCA34](#) [CT2-18-11PCAU](#) [CT2-36-15SC](#) [CT6-14S-2SC](#) [CT6E14SA7SC](#) [CT6E22-14PC](#) [CT6E22-14PS](#) [CT6E22-22PS](#) [M83513/01-FC](#) [M85049/48-3-2F](#) [6STD09PCM99B70X](#) [6STD09SCM99B30X](#) [6STD09SCT99S40X](#) [6STD15PCT99S40X](#) [6STD15SCM99B30X](#) [6STD15SCT99S40X](#) [6STF09PCM05B70X](#) [7-135760-9](#) [MC11E-10-6SN](#) [747552-3](#) [MD1-21PS](#) [MDM-15SCBRM7-F222](#) [MDM96517-699](#) [MDM96521-744](#) [MDVB1-21SL1](#) [MIK0-1-7SH003](#) [MIKQ6-7SH076](#) [MIKQ7-7PH077](#) [MIKQ7-7PH11](#) [MIKQ7-7PH32](#) [MIKQ9-7PH003](#) [MJSV-28SL61](#) [MKJ4A1F14-55S](#)