

# C-FILTER D-SUB STANDARD

Solder cup – Precision machined contacts – For wire size AWG 20

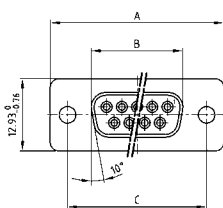


RoHS compliant – CSA listed, File No.: LR 115000-1 – UL listed, File No.: E202784

## DESCRIPTION

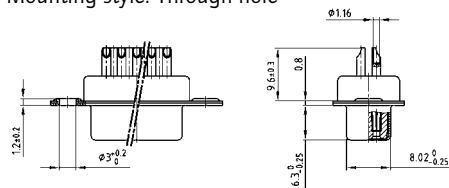
- Suitable for wire size **AWG 20**
- Mounting styles:
  - with through-hole,  $\varnothing .118"/3 \text{ mm}$
  - with 4-40 UNC or M3 threaded insert
- Quality class 3 (also available in quality class 1)
- Shell: Steel tin plated (brass tin plated on request)

## SOCKET CONNECTOR

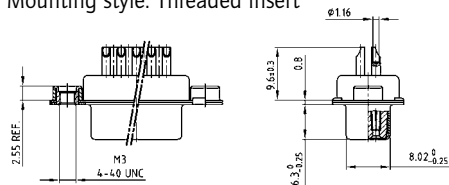


No. of pos.	A -0.76	B -0.25	C
09	31.19	16.46	25.00 $^{+0.12}_{-0.13}$
15	39.52	24.79	33.30 $^{+0.15}_{-0.10}$
25	53.42	38.50	47.04 $\pm 0.13$
37	69.70	54.96	63.50 $\pm 0.13$

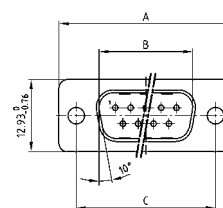
Mounting style: Through-hole



Mounting style: Threaded insert

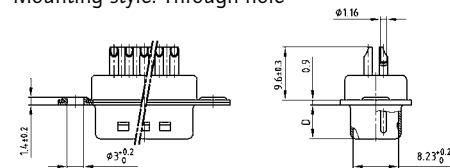


## PLUG CONNECTOR

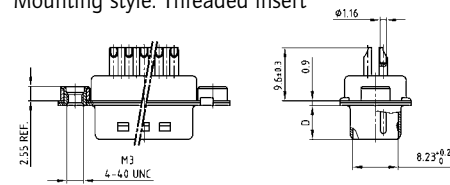


No. of pos.	A -0.76	B +0.25	C	D -0.3
09	31.19	16.79	25.00 $^{+0.12}_{-0.13}$	6.12
15	39.52	25.12	33.30 $^{+0.15}_{-0.10}$	6.12
25	53.42	38.84	47.04 $\pm 0.13$	5.99
37	69.70	55.30	63.50 $\pm 0.13$	5.99

Mounting style: Through-hole



Mounting style: Threaded insert



## ORDER DATA

### Capacitance 180 pF

#### SOCKET CONNECTOR

No. of pos.	Mounting style	Part Number
09	Through-hole	242 A 26740 X
15	Through-hole	242 A 26750 X
25	Through-hole	242 A 26760 X
37	Through-hole	242 A 26770 X
09	4-40 UNC Threaded insert	242 A 26900 X
15	4-40 UNC Threaded insert	242 A 26910 X
25	4-40 UNC Threaded insert	242 A 26920 X
37	4-40 UNC Threaded insert	242 A 26930 X
09	M3 Threaded insert	242 A 27060 X
15	M3 Threaded insert	242 A 27070 X
25	M3 Threaded insert	242 A 27080 X
37	M3 Threaded insert	242 A 27090 X

#### PLUG CONNECTOR

No. of pos.	Mounting style	Part Number
09	Through-hole	241 A 26840 X
15	Through-hole	241 A 26850 X
25	Through-hole	241 A 26860 X
37	Through-hole	241 A 26870 X
09	4-40 UNC Threaded insert	241 A 27000 X
15	4-40 UNC Threaded insert	241 A 27010 X
25	4-40 UNC Threaded insert	241 A 27020 X
37	4-40 UNC Threaded insert	241 A 27030 X
09	M3 Threaded insert	241 A 27160 X
15	M3 Threaded insert	241 A 27170 X
25	M3 Threaded insert	241 A 27180 X
37	M3 Threaded insert	241 A 27190 X

# C-FILTER D-SUB STANDARD

Solder cup – Precision machined contacts – For wire size AWG 20

**ORDER DATA**

**Capacitance 370 pF**

SOCKET CONNECTOR			PLUG CONNECTOR		
No. of pos.	Mounting style	Part Number	No. of pos.	Mounting style	Part Number
09	Through-hole	242 A 26780 X	09	Through-hole	241 A 26880 X
15	Through-hole	242 A 26790 X	15	Through-hole	241 A 26890 X
25	Through-hole	242 A 26800 X	25	Through-hole	241 A 26900 X
37	Through-hole	242 A 26810 X	37	Through-hole	241 A 26910 X
09	4-40 UNC Threaded insert	242 A 26940 X	09	4-40 UNC Threaded insert	241 A 27040 X
15	4-40 UNC Threaded insert	242 A 26950 X	15	4-40 UNC Threaded insert	241 A 27050 X
25	4-40 UNC Threaded insert	242 A 26960 X	25	4-40 UNC Threaded insert	241 A 27060 X
37	4-40 UNC Threaded insert	242 A 26970 X	37	4-40 UNC Threaded insert	241 A 27070 X
09	M3 Threaded insert	242 A 27100 X	09	M3 Threaded insert	241 A 27200 X
15	M3 Threaded insert	242 A 27110 X	15	M3 Threaded insert	241 A 27210 X
25	M3 Threaded insert	242 A 27120 X	25	M3 Threaded insert	241 A 27220 X
37	M3 Threaded insert	242 A 27130 X	37	M3 Threaded insert	241 A 27230 X

**Capacitance 830 pF**

SOCKET CONNECTOR			PLUG CONNECTOR		
No. of pos.	Mounting style	Part Number	No. of pos.	Mounting style	Part Number
09	Through-hole	242 A 26820 X	09	Through-hole	241 A 26920 X
15	Through-hole	242 A 26830 X	15	Through-hole	241 A 26930 X
25	Through-hole	242 A 26840 X	25	Through-hole	241 A 26940 X
37	Through-hole	242 A 26850 X	37	Through-hole	241 A 26950 X
09	4-40 UNC Threaded insert	242 A 26980 X	09	4-40 UNC Threaded insert	241 A 27080 X
15	4-40 UNC Threaded insert	242 A 26990 X	15	4-40 UNC Threaded insert	241 A 27090 X
25	4-40 UNC Threaded insert	242 A 27000 X	25	4-40 UNC Threaded insert	241 A 27100 X
37	4-40 UNC Threaded insert	242 A 27010 X	37	4-40 UNC Threaded insert	241 A 27110 X
09	M3 Threaded insert	242 A 27140 X	09	M3 Threaded insert	241 A 27240 X
15	M3 Threaded insert	242 A 27150 X	15	M3 Threaded insert	241 A 27250 X
25	M3 Threaded insert	242 A 27160 X	25	M3 Threaded insert	241 A 27260 X
37	M3 Threaded insert	242 A 27170 X	37	M3 Threaded insert	241 A 27270 X

**Capacitance 1300 pF**

SOCKET CONNECTOR			PLUG CONNECTOR		
No. of pos.	Mounting style	Part Number	No. of pos.	Mounting style	Part Number
09	Through-hole	242 A 26860 X	09	Through-hole	241 A 26960 X
15	Through-hole	242 A 26870 X	15	Through-hole	241 A 26970 X
25	Through-hole	242 A 26880 X	25	Through-hole	241 A 26980 X
37	Through-hole	242 A 26890 X	37	Through-hole	241 A 26990 X
09	4-40 UNC Threaded insert	242 A 27020 X	09	4-40 UNC Threaded insert	241 A 27120 X
15	4-40 UNC Threaded insert	242 A 27030 X	15	4-40 UNC Threaded insert	241 A 27130 X
25	4-40 UNC Threaded insert	242 A 27040 X	25	4-40 UNC Threaded insert	241 A 27140 X
37	4-40 UNC Threaded insert	242 A 27050 X	37	4-40 UNC Threaded insert	241 A 27150 X
09	M3 Threaded insert	242 A 27180 X	09	M3 Threaded insert	241 A 27280 X
15	M3 Threaded insert	242 A 27190 X	15	M3 Threaded insert	241 A 27290 X
25	M3 Threaded insert	242 A 27200 X	25	M3 Threaded insert	241 A 27300 X
37	M3 Threaded insert	242 A 27210 X	37	M3 Threaded insert	241 A 27310 X

## X-ON Electronics

Largest Supplier of Electrical and Electronic Components

*Click to view similar products for [D-Sub Standard Connectors](#) category:*

*Click to view products by [CONEC](#) manufacturer:*

Other Similar products are found below :

[56F711-015](#) [012-9507-004](#) [LV242999-142T12](#) [015-0341-000](#) [015-0349-000](#) [015-0372-005](#) [015-0372-008](#) [015-8755-001](#) [020419-0104](#) [012-0467-000](#) [012-0515-000](#) [012-9507-034](#) [012-9507-114](#) [020745-0008](#) [609-25P](#) [M24308315F](#) [CT2-14S-2PCA34](#) [CT2-18-11PCAU](#) [CT2-36-15SC](#) [CT6-14S-2SC](#) [CT6E14SA7SC](#) [CT6E22-14PC](#) [CT6E22-14PS](#) [CT6E22-22PS](#) [M83513/01-FC](#) [M85049/48-3-2F](#) [6STD09PCM99B70X](#) [6STD09SCM99B30X](#) [6STD09SCT99S40X](#) [6STD15PCT99S40X](#) [6STD15SCM99B30X](#) [6STD15SCT99S40X](#) [6STF09PCM05B70X](#) [7-135760-9](#) [MC11E-10-6SN](#) [747552-3](#) [MD1-21PS](#) [MDM-15SCBRM7-F222](#) [MDM96517-699](#) [MDM96521-744](#) [MDVB1-21SL1](#) [MIK0-1-7SH003](#) [MIKQ6-7SH076](#) [MIKQ7-7PH077](#) [MIKQ7-7PH11](#) [MIKQ7-7PH32](#) [MIKQ9-7PH003](#) [MJSV-28SL61](#) [MKJ4A1F14-55S](#) [8-135760-3](#)