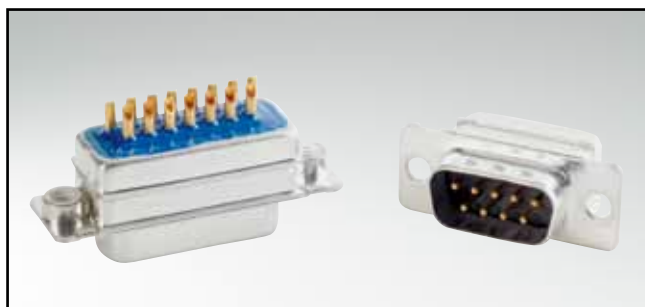


π-FILTER D-SUB STANDARD

Solder cup – Precision machined contacts – For wire size AWG 20

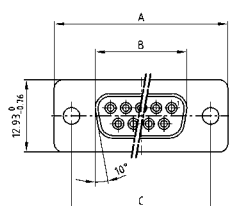


RoHS compliant – CSA listed, File No.: LR 115000-1 – UL listed, File No.: E202784

DESCRIPTION

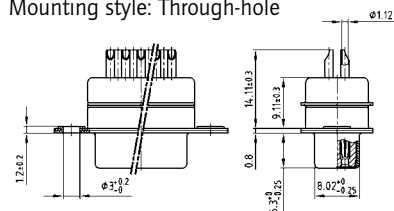
- Suitable for wire size **AWG 20**
- Mounting styles:
 - with through-hole, Ø .118"/3 mm
 - with 4-40 UNC or M3 threaded insert
- Quality class 3 (also available in quality class 1)
- Shell: Steel tin plated (brass tin plated on request)

SOCKET CONNECTOR

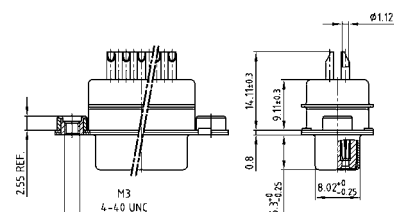


No. of pos.	A -0.76	B -0.25	C
09	31.19	16.46	25.00 ^{+0.12} / _{-0.13}
15	39.52	24.79	33.30 ^{+0.15} / _{-0.10}
25	53.42	38.50	47.04 ^{+0.13}
37	69.70	54.96	63.50 ^{+0.13}

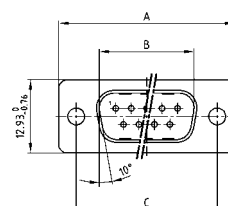
Mounting style: Through-hole



Mounting style: Threaded insert

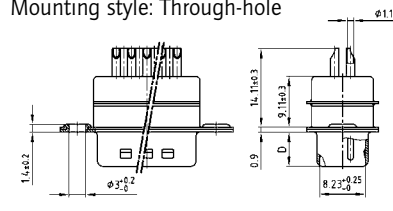


PLUG CONNECTOR

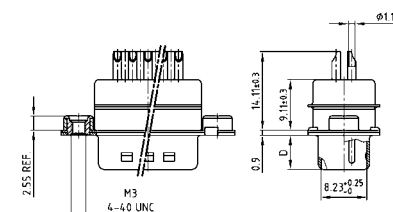


No. of pos.	A -0.76	B +0.25	C	D -0.3
09	31.19	16.79	25.00 ^{+0.12} / _{-0.13}	6.12
15	39.52	25.12	33.30 ^{+0.15} / _{-0.10}	6.12
25	53.42	38.84	47.04 ^{+0.13}	5.99
37	69.70	55.30	63.50 ^{+0.13}	5.99

Mounting style: Through-hole



Mounting style: Threaded insert



ORDER DATA

Capacitance 2 x 180 pF

SOCKET CONNECTOR

No. of pos.	Mounting style	Part Number
09	Through-hole	242 A 28980 X
15	Through-hole	242 A 28990 X
25	Through-hole	242 A 29000 X
37	Through-hole	242 A 29010 X
09	4-40 UNC Threaded insert	242 A 29140 X
15	4-40 UNC Threaded insert	242 A 29150 X
25	4-40 UNC Threaded insert	242 A 29160 X
37	4-40 UNC Threaded insert	242 A 29170 X
09	M3 Threaded insert	242 A 29300 X
15	M3 Threaded insert	242 A 29310 X
25	M3 Threaded insert	242 A 29320 X
37	M3 Threaded insert	242 A 29330 X

PLUG CONNECTOR

No. of pos.	Mounting style	Part Number
09	Through-hole	241 A 29080 X
15	Through-hole	241 A 29090 X
25	Through-hole	241 A 29100 X
37	Through-hole	241 A 29110 X
09	4-40 UNC Threaded insert	241 A 29240 X
15	4-40 UNC Threaded insert	241 A 29250 X
25	4-40 UNC Threaded insert	241 A 29260 X
37	4-40 UNC Threaded insert	241 A 29270 X
09	M3 Threaded insert	241 A 29400 X
15	M3 Threaded insert	241 A 29410 X
25	M3 Threaded insert	241 A 29420 X
37	M3 Threaded insert	241 A 29430 X

π-FILTER D-SUB STANDARD

Solder cup – Precision machined contacts – For wire size AWG 20

ORDER DATA

Capacitance 2 x 370 pF

SOCKET CONNECTOR			PLUG CONNECTOR		
No. of pos.	Mounting style	Part Number	No. of pos.	Mounting style	Part Number
09	Through-hole	242 A 29020 X	09	Through-hole	241 A 29120 X
15	Through-hole	242 A 29030 X	15	Through-hole	241 A 29130 X
25	Through-hole	242 A 29040 X	25	Through-hole	241 A 29140 X
37	Through-hole	242 A 29050 X	37	Through-hole	241 A 29150 X
09	4-40 UNC Threaded insert	242 A 29180 X	09	4-40 UNC Threaded insert	241 A 29280 X
15	4-40 UNC Threaded insert	242 A 29190 X	15	4-40 UNC Threaded insert	241 A 29290 X
25	4-40 UNC Threaded insert	242 A 29200 X	25	4-40 UNC Threaded insert	241 A 29300 X
37	4-40 UNC Threaded insert	242 A 29210 X	37	4-40 UNC Threaded insert	241 A 29310 X
09	M3 Threaded insert	242 A 29340 X	09	M3 Threaded insert	241 A 29440 X
15	M3 Threaded insert	242 A 29350 X	15	M3 Threaded insert	241 A 29450 X
25	M3 Threaded insert	242 A 29360 X	25	M3 Threaded insert	241 A 29460 X
37	M3 Threaded insert	242 A 29370 X	37	M3 Threaded insert	241 A 29470 X

Capacitance 2 x 830 pF

SOCKET CONNECTOR			PLUG CONNECTOR		
No. of pos.	Mounting style	Part Number	No. of pos.	Mounting style	Part Number
09	Through-hole	242 A 29060 X	09	Through-hole	241 A 29160 X
15	Through-hole	242 A 29070 X	15	Through-hole	241 A 29170 X
25	Through-hole	242 A 29080 X	25	Through-hole	241 A 29180 X
37	Through-hole	242 A 29090 X	37	Through-hole	241 A 29190 X
09	4-40 UNC Threaded insert	242 A 29220 X	09	4-40 UNC Threaded insert	241 A 29320 X
15	4-40 UNC Threaded insert	242 A 29230 X	15	4-40 UNC Threaded insert	241 A 29330 X
25	4-40 UNC Threaded insert	242 A 29240 X	25	4-40 UNC Threaded insert	241 A 29340 X
37	4-40 UNC Threaded insert	242 A 29250 X	37	4-40 UNC Threaded insert	241 A 29350 X
09	M3 Threaded insert	242 A 29380 X	09	M3 Threaded insert	241 A 29480 X
15	M3 Threaded insert	242 A 29390 X	15	M3 Threaded insert	241 A 29490 X
25	M3 Threaded insert	242 A 29400 X	25	M3 Threaded insert	241 A 29500 X
37	M3 Threaded insert	242 A 29410 X	37	M3 Threaded insert	241 A 29510 X

Capacitance 2 x 1300 pF

SOCKET CONNECTOR			PLUG CONNECTOR		
No. of pos.	Mounting style	Part Number	No. of pos.	Mounting style	Part Number
09	Through-hole	242 A 29100 X	09	Through-hole	241 A 29200 X
15	Through-hole	242 A 29110 X	15	Through-hole	241 A 29210 X
25	Through-hole	242 A 29120 X	25	Through-hole	241 A 29220 X
37	Through-hole	242 A 29130 X	37	Through-hole	241 A 29230 X
09	4-40 UNC Threaded insert	242 A 29260 X	09	4-40 UNC Threaded insert	241 A 29360 X
15	4-40 UNC Threaded insert	242 A 29270 X	15	4-40 UNC Threaded insert	241 A 29370 X
25	4-40 UNC Threaded insert	242 A 29280 X	25	4-40 UNC Threaded insert	241 A 29380 X
37	4-40 UNC Threaded insert	242 A 29290 X	37	4-40 UNC Threaded insert	241 A 29390 X
09	M3 Threaded insert	242 A 29420 X	09	M3 Threaded insert	241 A 29520 X
15	M3 Threaded insert	242 A 29430 X	15	M3 Threaded insert	241 A 29530 X
25	M3 Threaded insert	242 A 29440 X	25	M3 Threaded insert	241 A 29540 X
37	M3 Threaded insert	242 A 29450 X	37	M3 Threaded insert	241 A 29550 X

X-ON Electronics

Largest Supplier of Electrical and Electronic Components

Click to view similar products for [D-Sub Standard Connectors](#) category:

Click to view products by [CONEC](#) manufacturer:

Other Similar products are found below :

[56F711-015](#) [012-9507-004](#) [LV242999-142T12](#) [015-0341-000](#) [015-0349-000](#) [015-0372-005](#) [015-0372-008](#) [015-8755-001](#) [020419-0104](#) [012-0467-000](#) [012-0515-000](#) [012-9507-034](#) [012-9507-114](#) [020745-0008](#) [609-25P](#) [M24308315F](#) [CT2-14S-2PCA34](#) [CT2-18-11PCAU](#) [CT2-36-15SC](#) [CT6-14S-2SC](#) [CT6E14SA7SC](#) [CT6E22-14PC](#) [CT6E22-14PS](#) [CT6E22-22PS](#) [M83513/01-FC](#) [M85049/48-3-2F](#) [6STD09PCM99B70X](#) [6STD09SCM99B30X](#) [6STD09SCT99S40X](#) [6STD15PCT99S40X](#) [6STD15SCM99B30X](#) [6STD15SCT99S40X](#) [6STF09PCM05B70X](#) [7-135760-9](#) [MC11E-10-6SN](#) [747552-3](#) [MD1-21PS](#) [MDM-15SCBRM7-F222](#) [MDM96517-699](#) [MDM96521-744](#) [MDVB1-21SL1](#) [MIK0-1-7SH003](#) [MIKQ6-7SH076](#) [MIKQ7-7PH077](#) [MIKQ7-7PH11](#) [MIKQ7-7PH32](#) [MIKQ9-7PH003](#) [MJSV-28SL61](#) [MKJ4A1F14-55S](#) [8-135760-3](#)