

C-FILTER D-SUB ADAPTER

Socket connector / Plug connector – Precision machined contacts – Low profile

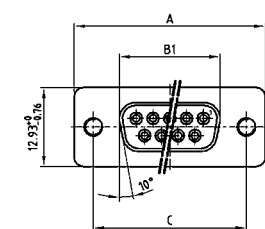


RoHS compliant – CSA listed, File No.: LR 115000-1 – UL listed, File No.: E202784

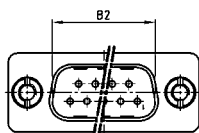
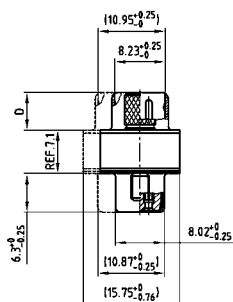
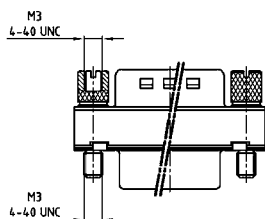
DESCRIPTION

- Mounting style:
with 4-40 UNC or M3 jack screw
- Quality class 3 (also available in quality class 1)
- Shell: Steel tin plated

PRODUCT DRAWING



No. of pos.	A -0.76	B1 -0.25	B2 +0.25	C	D -0.3
09	31.19	16.46	16.79	25.00 ^{+0.12} _{-0.13}	6.10
15	39.52	24.79	25.12	33.30 ^{+0.15} _{-0.10}	6.12
25	53.42	38.50	38.84	47.04 ^{+0.13}	5.99
37	69.70	54.96	55.30	63.50 ^{+0.13}	5.99
50	67.31	52.55	52.68	61.10 ^{+0.14} _{-0.11}	5.99



50 pos. = Dim. in (_)

ORDER DATA

SOCKET CONNECTOR / PLUG CONNECTOR WITH JACK SCREW			SOCKET CONNECTOR / PLUG CONNECTOR WITH JACK SCREW		
No. of pos.	Mounting style	Part Number	No. of pos.	Mounting style	Part Number
09	4-40 UNC Jack screw	243 A 11030 X	09	M3 Jack screw	243 A 11080 X
15	4-40 UNC Jack screw	243 A 11040 X	15	M3 Jack screw	243 A 11090 X
25	4-40 UNC Jack screw	243 A 11050 X	25	M3 Jack screw	243 A 11100 X
37	4-40 UNC Jack screw	243 A 11060 X	37	M3 Jack screw	243 A 11110 X
50	4-40 UNC Jack screw	243 A 11070 X	50	M3 Jack screw	243 A 11120 X

C-FILTER D-SUB ADAPTER

Socket connector / Plug connector – Precision machined contacts – Low profile

ORDER DATA

Capacitance 370 pF					
SOCKET CONNECTOR / PLUG CONNECTOR WITH JACK SCREW			SOCKET CONNECTOR / PLUG CONNECTOR WITH JACK SCREW		
No. of pos.	Mounting style	Part Number	No. of pos.	Mounting style	Part Number
09	4-40 UNC Jack screw	243 A 10010 X	09	M3 Jack screw	243 A 10510 X
15	4-40 UNC Jack screw	243 A 10020 X	15	M3 Jack screw	243 A 10520 X
25	4-40 UNC Jack screw	243 A 10030 X	25	M3 Jack screw	243 A 10530 X
37	4-40 UNC Jack screw	243 A 10040 X	37	M3 Jack screw	243 A 10540 X
50	4-40 UNC Jack screw	243 A 10130 X	50	M3 Jack screw	243 A 10550 X

Capacitance 830 pF					
SOCKET CONNECTOR / PLUG CONNECTOR WITH JACK SCREW			SOCKET CONNECTOR / PLUG CONNECTOR WITH JACK SCREW		
No. of pos.	Mounting style	Part Number	No. of pos.	Mounting style	Part Number
09	4-40 UNC Jack screw	243 A 10090 X	09	M3 Jack screw	243 A 10610 X
15	4-40 UNC Jack screw	243 A 10100 X	15	M3 Jack screw	243 A 10620 X
25	4-40 UNC Jack screw	243 A 10110 X	25	M3 Jack screw	243 A 10630 X
37	4-40 UNC Jack screw	243 A 10120 X	37	M3 Jack screw	243 A 10640 X
50	4-40 UNC Jack screw	243 A 10150 X	50	M3 Jack screw	243 A 10650 X

Capacitance 1300 pF					
SOCKET CONNECTOR / PLUG CONNECTOR WITH JACK SCREW			SOCKET CONNECTOR / PLUG CONNECTOR WITH JACK SCREW		
No. of pos.	Mounting style	Part Number	No. of pos.	Mounting style	Part Number
09	4-40 UNC Jack screw	243 A 10050 X	09	M3 Jack screw	243 A 10560 X
15	4-40 UNC Jack screw	243 A 10060 X	15	M3 Jack screw	243 A 10570 X
25	4-40 UNC Jack screw	243 A 10070 X	25	M3 Jack screw	243 A 10580 X
37	4-40 UNC Jack screw	243 A 10080 X	37	M3 Jack screw	243 A 10590 X
50	4-40 UNC Jack screw	243 A 10140 X	50	M3 Jack screw	243 A 10600 X

X-ON Electronics

Largest Supplier of Electrical and Electronic Components

Click to view similar products for [D-Sub Adapters & Gender Changers](#) category:

Click to view products by [CONEC](#) manufacturer:

Other Similar products are found below :

[76000672](#) [243A10110X](#) [243A10120X](#) [243A10140X](#) [243A11070X](#) [243A13240X](#) [243A13290X](#) [243A13460X](#) [300X10729X](#) [300X10759X](#)
[GCHDLP26F26F](#) [56-715-005-LI](#) [56F715-003](#) [76000673](#) [200.2071](#) [243A11800X](#) [243A10560X](#) [243A11060X](#) [56-745-005](#) [243A10580X](#)
[56F715-005-LI](#) [SC485](#) [40-9525S](#) [76000670](#) [FCC17-C37AD-291](#) [FCC17-E09AD-250](#) [FCE17-E09AD-250](#) [76000560](#) [GCLP37M37F](#)
[GCLP37M37M](#) [76000702](#) [GCHDLPF15M15M](#) [GCHDLPF15F15F](#) [301-1001-11](#) [301-1001-31](#) [76000698](#) [76000699](#) [NADB9MF](#) [FCE17-](#)
[C37AD-290](#) [30-9520](#) [P156-000](#) [P118-000](#) [P152-000](#) [2902318](#) [P150-000](#) [2902317](#) [320X10549X](#) [2902320](#) [230016003](#) [163A50039X](#)