

# C-FILTER D-SUB ADAPTER

Socket connector / Plug connector – Precision machined contacts – Low profile

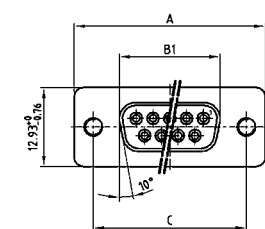


RoHS compliant – CSA listed, File No.: LR 115000-1 – UL listed, File No.: E202784

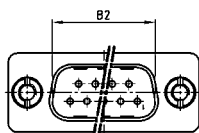
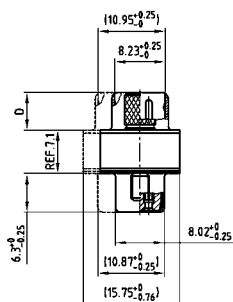
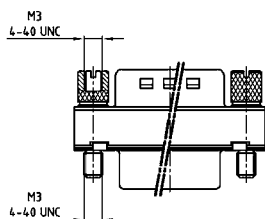
## DESCRIPTION

- Mounting style:  
with 4-40 UNC or M3 jack screw
- Quality class 3 (also available in quality class 1)
- Shell: Steel tin plated

## PRODUCT DRAWING



No. of pos.	A -0.76	B1 -0.25	B2 +0.25	C	D -0.3
09	31.19	16.46	16.79	25.00 <sup>+0.12</sup> <sub>-0.13</sub>	6.10
15	39.52	24.79	25.12	33.30 <sup>+0.15</sup> <sub>-0.10</sub>	6.12
25	53.42	38.50	38.84	47.04 <sup>+0.13</sup>	5.99
37	69.70	54.96	55.30	63.50 <sup>+0.13</sup>	5.99
50	67.31	52.55	52.68	61.10 <sup>+0.14</sup> <sub>-0.11</sub>	5.99



50 pos. = Dim. in ( \_ )

## ORDER DATA

SOCKET CONNECTOR / PLUG CONNECTOR WITH JACK SCREW			SOCKET CONNECTOR / PLUG CONNECTOR WITH JACK SCREW		
No. of pos.	Mounting style	Part Number	No. of pos.	Mounting style	Part Number
09	4-40 UNC Jack screw	243 A 11030 X	09	M3 Jack screw	243 A 11080 X
15	4-40 UNC Jack screw	243 A 11040 X	15	M3 Jack screw	243 A 11090 X
25	4-40 UNC Jack screw	243 A 11050 X	25	M3 Jack screw	243 A 11100 X
37	4-40 UNC Jack screw	243 A 11060 X	37	M3 Jack screw	243 A 11110 X
50	4-40 UNC Jack screw	243 A 11070 X	50	M3 Jack screw	243 A 11120 X

# C-FILTER D-SUB ADAPTER

Socket connector / Plug connector – Precision machined contacts – Low profile

**ORDER DATA**

**Capacitance 370 pF**

SOCKET CONNECTOR / PLUG CONNECTOR WITH JACK SCREW			SOCKET CONNECTOR / PLUG CONNECTOR WITH JACK SCREW		
No. of pos.	Mounting style	Part Number	No. of pos.	Mounting style	Part Number
09	4-40 UNC Jack screw	243 A 10010 X	09	M3 Jack screw	243 A 10510 X
15	4-40 UNC Jack screw	243 A 10020 X	15	M3 Jack screw	243 A 10520 X
25	4-40 UNC Jack screw	243 A 10030 X	25	M3 Jack screw	243 A 10530 X
37	4-40 UNC Jack screw	243 A 10040 X	37	M3 Jack screw	243 A 10540 X
50	4-40 UNC Jack screw	243 A 10130 X	50	M3 Jack screw	243 A 10550 X

**Capacitance 830 pF**

SOCKET CONNECTOR / PLUG CONNECTOR WITH JACK SCREW			SOCKET CONNECTOR / PLUG CONNECTOR WITH JACK SCREW		
No. of pos.	Mounting style	Part Number	No. of pos.	Mounting style	Part Number
09	4-40 UNC Jack screw	243 A 10090 X	09	M3 Jack screw	243 A 10610 X
15	4-40 UNC Jack screw	243 A 10100 X	15	M3 Jack screw	243 A 10620 X
25	4-40 UNC Jack screw	243 A 10110 X	25	M3 Jack screw	243 A 10630 X
37	4-40 UNC Jack screw	243 A 10120 X	37	M3 Jack screw	243 A 10640 X
50	4-40 UNC Jack screw	243 A 10150 X	50	M3 Jack screw	243 A 10650 X

**Capacitance 1300 pF**

SOCKET CONNECTOR / PLUG CONNECTOR WITH JACK SCREW			SOCKET CONNECTOR / PLUG CONNECTOR WITH JACK SCREW		
No. of pos.	Mounting style	Part Number	No. of pos.	Mounting style	Part Number
09	4-40 UNC Jack screw	243 A 10050 X	09	M3 Jack screw	243 A 10560 X
15	4-40 UNC Jack screw	243 A 10060 X	15	M3 Jack screw	243 A 10570 X
25	4-40 UNC Jack screw	243 A 10070 X	25	M3 Jack screw	243 A 10580 X
37	4-40 UNC Jack screw	243 A 10080 X	37	M3 Jack screw	243 A 10590 X
50	4-40 UNC Jack screw	243 A 10140 X	50	M3 Jack screw	243 A 10600 X

## X-ON Electronics

Largest Supplier of Electrical and Electronic Components

*Click to view similar products for D-Sub Adapters & Gender Changers category:*

*Click to view products by CONEC manufacturer:*

Other Similar products are found below :

[243A10120X](#) [243A11070X](#) [243A13290X](#) [243A13460X](#) [300X10729X](#) [300X10759X](#) [GCHDLP26F26F](#) [30-9532P](#) [40-9586FP](#) [500-135](#) [40-9526HDMP](#) [56F715-003](#) [243A11800X](#) [243A10560X](#) [40-9526HDSP](#) [243A11060X](#) [56-745-005](#) [243A10580X](#) [56-725-001](#) [SC485](#) [173114-0088](#) [173114-0099](#) [76000670](#) [76000700](#) [NADB9MF](#) [2902323](#) [2902326](#) [40-9538F](#) [163A50049X](#) [NADB15FF-B](#) [NADB9FF-B](#) [243A10030X](#) [76000671](#) [163A50029X](#) [16-501373](#) [FCC17-A15AD-280](#) [FCC17-E09AD-210](#) [FCE17-A15AD-250](#) [FCE17-B25AD-210](#) [FCE17-B25AD-250](#) [FCE17B25AD290](#) [FCE17-E09AD-210](#) [FCE5709500430](#) [2310387](#) [GCHDLP44M44M](#) [GCLP25M25F](#) [FCC17A15AD2E0](#) [FCC17C37AD280](#) [FCC17-E09AD-280](#) [FCC17E09AD293](#)