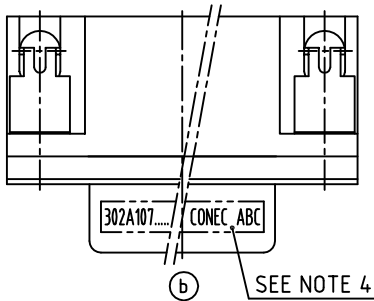
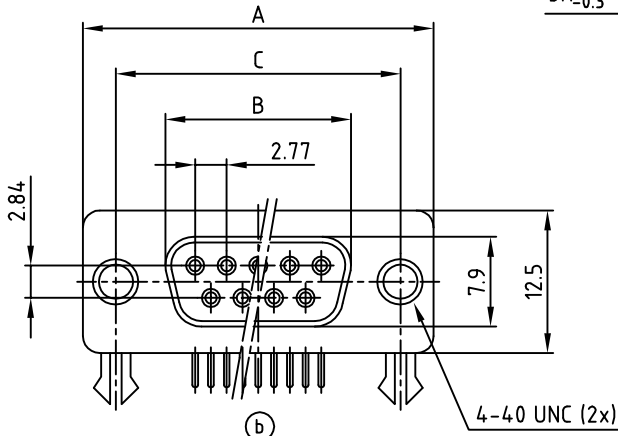
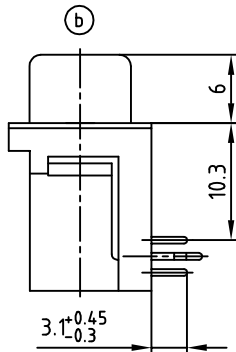
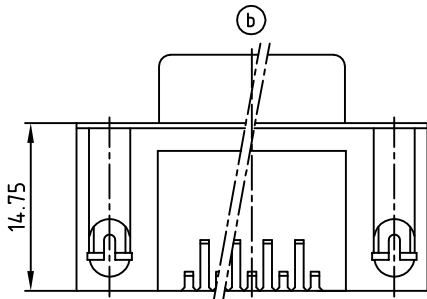
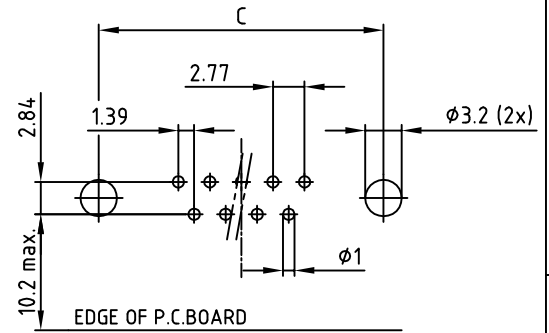


POS.	A	B	C	PART-NO.
9	30.8	16.3	25.0	302A10739X
15	39.2	24.6	33.3	302A10749X
25	53.1	38.3	47.1	302A10759X
37	69.4	54.8	63.5	302A10769X



used for: D-SUB



RECOMMENDED P.C.B LAYOUT (TOP VIEW)
TOLERANCES: ±0.05mm

ⓑ SPECIFICATION

- MATERIAL**
Insulator: Thermal Plastic UL94V-0
Contacts: Copper Alloy
Shell: Steel
Rivet, Boardlock: Copper Alloy
- CONTACT PLATING**
Underplate: 50µin Nickel
Contact Area: Gold Flash
Solder Tails Area: Gold Flash
- ELECTRICAL**
Operation Voltage: 250 VAC Max.
Current Rating: 3 Ampere
Contact Resistance: 15 m Ohm
Insulation Resistance: 3000 M Ohm Min @ 500 VDC
Dielectric Withstanding Voltage: 1000 VAC / Minute
Operating Temperature: -55°C TO +105°C
- CONNECTOR IS PART MARKED:** PART-NO. CONEC ABC

APPROVAL # FREIGABE # DEBLOCAGE # AUTORIZACION # APPROVAL	
CUSTOMER APPROVAL DATE:	
NAME:	TITLE:
COMPANY NAME:	
APPROVAL # FREIGABE # DEBLOCAGE # AUTORIZACION # APPROVAL	



THIS DRAWING MAY NOT BE COPIED OR REPRODUCED IN ANY WAY, AND MAY NOT BE PASSED ON TO A THIRD PARTY WITHOUT WRITTEN PERMISSION.
OWNERSHIP AND COPYRIGHT OF CONEC GmbH DO NOT ALTER CAD DRAWING BY HAND

tolerance		dim. in mm	
ⓑ	0.00	±0.5	±0.2
	0.00	±0.3	±0.2
	0.00	±0.2	±0.2
1998	date	name	
drawn	15.06.	Barcinski	
appd.	15.06.	Mickenbecker	
norm			
d-old			
7 x b	Ä 3229	18.12.2008	Lehmen.
a	Origin		
rev.	description	date	name



scale:	2:1	
material:	SEE NOTES	
title:	D-SUB R/A FEMALE 90° 9-37pos.	
dwg no:	AutoCAD 2006	DIN-A
	16K11EWA	4
part no:	SEE TABLE	
		sh: 1/1

X-ON Electronics

Largest Supplier of Electrical and Electronic Components

Click to view similar products for [D-Sub Standard Connectors](#) category:

Click to view products by [CONEC](#) manufacturer:

Other Similar products are found below :

[56F711-015](#) [012-9507-004](#) [LV242999-142T12](#) [015-0341-000](#) [015-0349-000](#) [015-0372-005](#) [015-0372-008](#) [015-8755-001](#) [020419-0104](#) [012-0467-000](#) [012-0515-000](#) [012-9507-034](#) [012-9507-114](#) [020745-0008](#) [609-25P](#) [M24308/2-23Z](#) [CT2-14S-2PCA34](#) [CT2-18-11PCAU](#) [CT2-36-15SC](#) [CT6-14S-2SC](#) [CT6E14SA7SC](#) [CT6E22-14PC](#) [CT6E22-14PS](#) [CT6E22-22PS](#) [M83513/01-FC](#) [M85049/48-3-2F](#) [6STD09PCM99B70X](#) [6STD09SCM99B30X](#) [6STD09SCT99S40X](#) [6STD15PCT99S40X](#) [6STD15SCM99B30X](#) [6STD15SCT99S40X](#) [6STF09PCM05B70X](#) [7-135760-9](#) [MC11E-10-6SN](#) [747552-3](#) [MD1-21PS](#) [MDM-15SCBRM7-F222](#) [MDM96517-699](#) [MDM96521-744](#) [MDVB1-21SL1](#) [MIK0-1-7SH003](#) [MIKQ6-7SH076](#) [MIKQ7-7PH077](#) [MIKQ7-7PH11](#) [MIKQ7-7PH32](#) [MIKQ9-7PH003](#) [MJSV-28SL61](#) [MKJ4A1F14-55S](#) [8-135760-3](#)