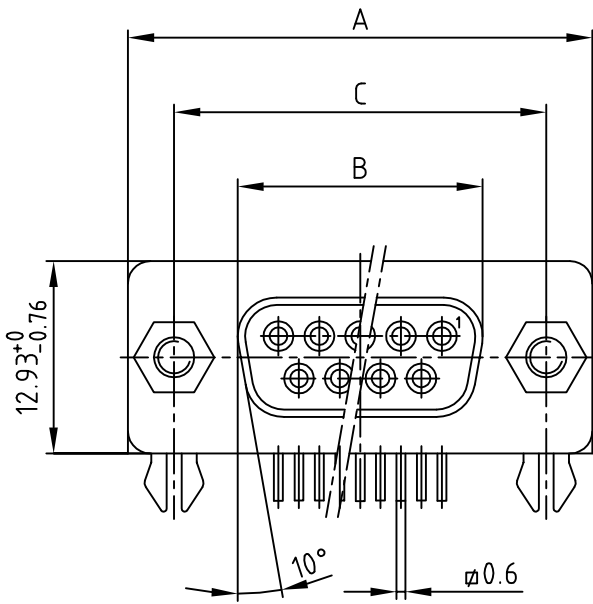
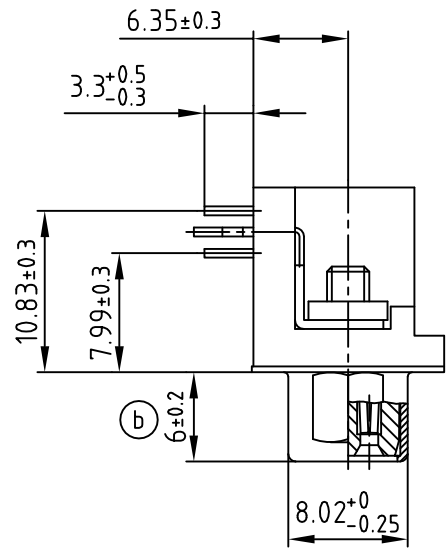
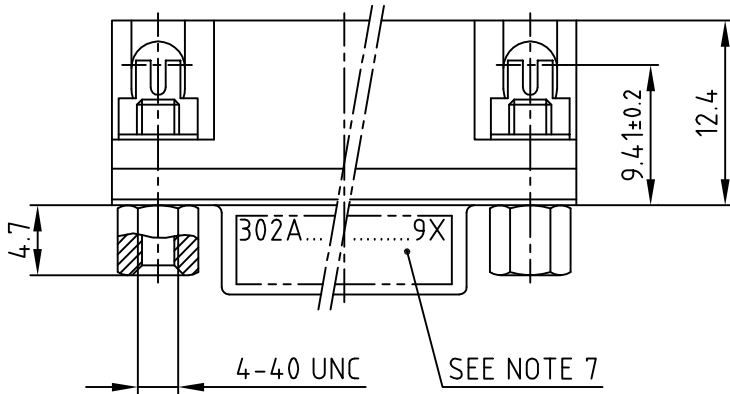


used for: D-SUB



POS.	A -0.76	B -0.25	C	Part NO.
9	31.19	16.46	25.00 ^{+0.12} / _{-0.13}	302A11249X
15	39.52	24.79	33.30 ^{+0.15} / _{-0.1}	302A11259X
25	53.42	38.50	47.04 ±0.13	302A11269X
37	69.70	54.96	63.50 ±0.13	302A11279X



NOTES:

- ① METALSHELLS: STEEL; NICKEL PLATED
- ② INSULATORS: PBT GF UL 94 V-0, BLACK
- ③ CONTACTS: COPPER ALLOY
PLATING: GOLD FLASH over NICKEL
- ④ PCB-SNAPS: COPPER ALLOY; min. 200µin TIN over 80µin NICKEL
PCB-HOLE: $\phi 3.1 \pm 0.1$; PCB THICKNESS 1.6mm
- ⑤ P.C.B. HOLE DRILLINGS ON DRAWING NO.: 16K111UA
- ⑥ MAXIMUM TORQUE VALUE FOR THREAD: 6 in.LB
- ⑦ CONNECTOR IS PART MARKED: PART-NO. CONEC ABC

RoHS compliant

THIS DRAWING MAY NOT BE COPIED OR REPRODUCED IN ANY WAY, AND MAY NOT BE PASSED ON TO A THIRD PARTY, WITHOUT WRITTEN PERMISSION. OWNERSHIP AND COPYRIGHT OF CONEC GmbH DO NOT ALTER CAD DRAWING BY HAND

rev.	description	date	name
1 x c	Ä 5865	29.10.2015	Unkrüter
1 x b	Ä 5290	24.07.2014	Lehm.
a	Original		

tolerance		dim. in mm	
2003	date	name	
drawn	26.05.	Lehmenkühler	
appd.	26.05.	Kühle	
norm			

scale:	2:1
material:	SEE NOTES
title:	D-SUB FEMALE 90° 9-37pos. with threaded insert , hex bolt and clip
dwg no:	16K1A958
part no:	SEE TABLE
DIN-A	3
sh:	1/1



X-ON Electronics

Largest Supplier of Electrical and Electronic Components

Click to view similar products for [D-Sub Standard Connectors](#) category:

Click to view products by [CONEC](#) manufacturer:

Other Similar products are found below :

[56F711-015](#) [012-9507-004](#) [LV242999-142T12](#) [015-0341-000](#) [015-0349-000](#) [015-0372-005](#) [015-0372-008](#) [015-8755-001](#) [020419-0104](#) [012-0467-000](#) [012-0515-000](#) [012-9507-034](#) [012-9507-114](#) [020745-0008](#) [609-25P](#) [M24308/2-23Z](#) [M24308315F](#) [CT2-14S-2PCA34](#) [CT2-18-11PCAU](#) [CT2-36-15SC](#) [CT6-14S-2SC](#) [CT6E14SA7SC](#) [CT6E22-14PC](#) [CT6E22-14PS](#) [CT6E22-22PS](#) [M83513/01-FC](#) [M85049/48-3-2F](#) [6STD09PCM99B70X](#) [6STD09SCM99B30X](#) [6STD09SCT99S40X](#) [6STD15PCT99S40X](#) [6STD15SCM99B30X](#) [6STD15SCT99S40X](#) [6STF09PCM05B70X](#) [7-135760-9](#) [MC11E-10-6SN](#) [747552-3](#) [MD1-21PS](#) [MDM-15SCBRM7-F222](#) [MDM96517-699](#) [MDM96521-744](#) [MDVB1-21SL1](#) [MIK0-1-7SH003](#) [MIKQ6-7SH076](#) [MIKQ7-7PH077](#) [MIKQ7-7PH11](#) [MIKQ7-7PH32](#) [MIKQ9-7PH003](#) [MJSV-28SL61](#) [MKJ4A1F14-55S](#)