

used for:

### SPECIFICATIONS

#### Materials

Insulator: Thermoplastic, Glass Filled, UL94V-0 Rated

Contact: Copper Alloy, 30u" Gold Plated

Shell: Copper Alloy, Nickel Plated

#### Electrical

Insulation Resistance: 1000 Megohms Minimum

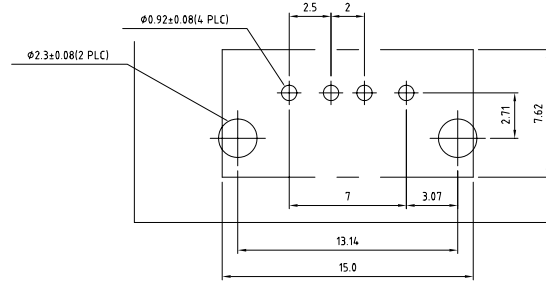
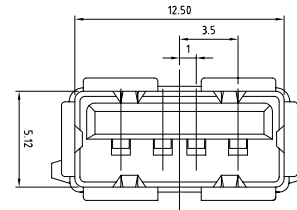
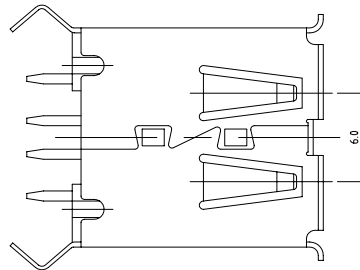
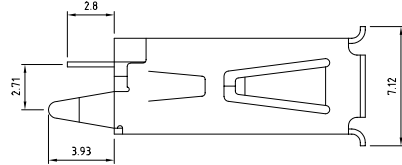
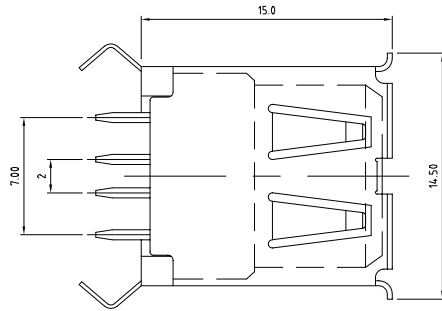
Contact Resistance: 30 Milliohms Maximum Initial

Dielectric Withstanding Voltage: 500V AC for one minute

Current: 1.0 Ampere Maximum Per Contact At 30°C T-Rise

Voltage: 30V AC (rms)

Temperature: -55°C ~ 85°C



Directive 2002/95/EC  
"RoHS"  
Compliant

THIS DRAWING MAY NOT BE COPIED OR REPRODUCED IN ANY WAY, AND MAY NOT BE PASSED ON TO A THIRD PARTY WITHOUT WRITTEN PERMISSION. OWNERSHIP AND COPYRIGHT OF CONEC CORPORATION DO NOT ALTER CAD DRAWING BY HAND

tolerance		finish	
unless otherwise specified tolerance shall be as follows			
Decimal:	.xx .xxx	2006	date
Angles:		name	name
		draw.	April 17 Vincent Ke
		appd.	April 17 Kathy Skelhorn
		norm	
		d-old	
a	origin	<b>CONEC</b> <sup>®</sup>	
rev.	description		
	date		
	name		

scale:	
material: SEE SPECIFICATIONS	
title: USB 2.0 connector A type PCB Thru-Hole 4pin female RoHS compliant	
drawing no.:	AutoCAD 2005
	39K1A238
part no.:	33UBAD-04SW12R

DIN A3	sheet 1/1
--------	-----------

## X-ON Electronics

Largest Supplier of Electrical and Electronic Components

*Click to view similar products for [USB Connectors](#) category:*

*Click to view products by [CONEC](#) manufacturer:*

Other Similar products are found below :

[65-647-8-BK-BU](#) [950](#) [952](#) [E8144-B01021-L](#) [A-USB B-TOP-C](#) [MUSBA511N5](#) [MUSBD11135](#) [217450-1](#) [KMBVX-TH-5S-B30](#) [896-30-004-00-000000](#) [KUSBVX-BS1N-W30](#) [KUSBX-AP-KIT-SCBLK](#) [KUSBX-AS2N-W](#) [KUSBX-SMT2AP1S-W](#) [KUSBX-SMT2AP1S-W30](#) [935](#) [957](#) [30-498-6](#) [SK-60A-2](#) [17-210051](#) [1734082-1](#) [30-1574](#) [30-470](#) [30-489](#) [30-541](#) [30-572-3](#) [A-USB A-2P-C](#) [MIKROE-1451](#) [USBFTV2PEM2G](#) [USBFTVC6ZN](#) [KUSBX-AS2N-W30](#) [KUSBX-SLAS1N-W](#) [KUSBX-SMT-AS1N-W30](#) [4689-1](#) [1-1734084-2](#) [E8110-001-01](#) [33UBARS1-04SW11](#) [33UBAR-04SW11](#) [USBF21ZNSCC](#) [USBBFTV6ZC](#) [10135326-001LF](#) [M9177/3-1](#) [USB-A-S-F-B-VT](#) [925](#) [4198](#) [690-024-633-031](#) [KUSBEX-BSFS1N-W](#) [USBFTVC6MRG](#) [UA-20BMFA-SL8001](#) [17-250101](#)