

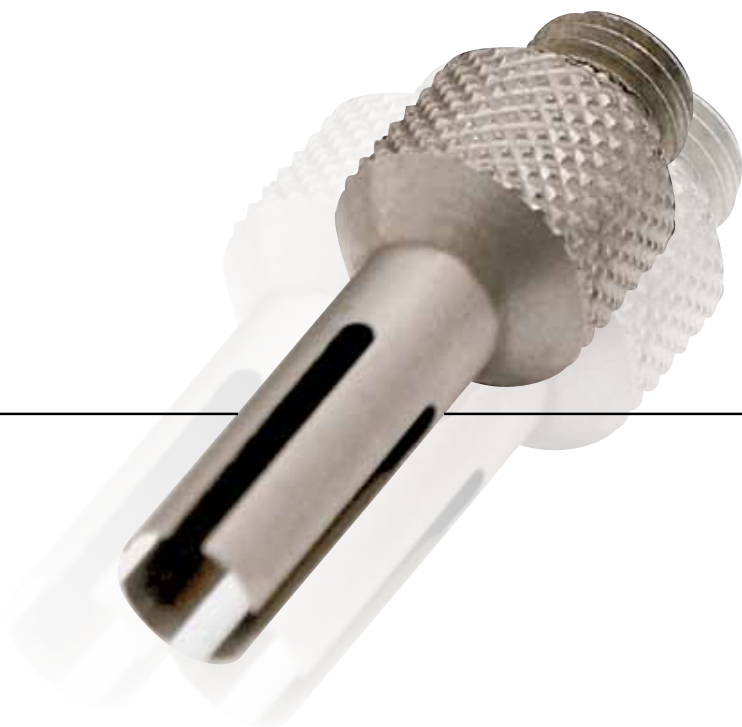
SECTION 14

INSTALLATION AND ASSEMBLY TOOLS



For standard, High Density
and Combination D-SUB
Connector series

CONEC offers a variety of special tools to facilitate the reliable, rational assembly of contacts and connectors in its line of input/output connectors. These tools are practice-proven and ensure the optimal handling of our products.



For technical support and handling technic
please contact the factory.

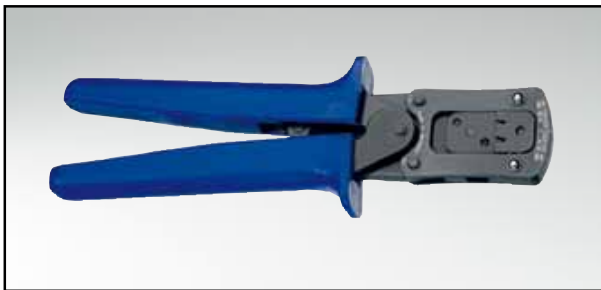




DESCRIPTION _____

Installing tool
for D-SUB High Density contacts

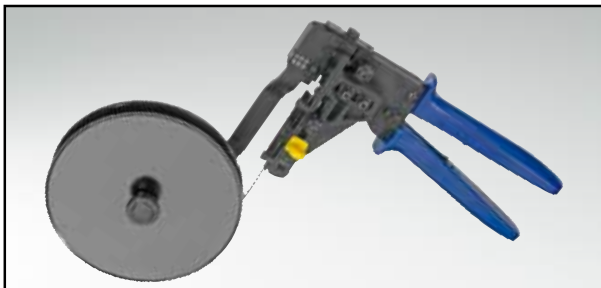
Part Number 360x10339x



DESCRIPTION _____

Crimp tool
for D-SUB standard stamped and formed contacts

Part Number 360 X 10079 X



DESCRIPTION _____

Spool Crimp tool
for D-SUB stamped and formed contacts

Part Number 360 X 10069 X



DESCRIPTION _____

Insertion and extraction tool
for D-SUB crimp signal contacts

Part Number 360 X 12009 X



DESCRIPTION _____

Hand Crimp tool for high power contacts

Part Number 360 X 10409 X



DESCRIPTION _____

Insert for above hand crimp tool

Part Number 360 X 20029 X



DESCRIPTION _____

Extraction tool
for D-SUB coaxial, high power and high voltage contacts
for DIN EN 60603-2 high power and coaxial contacts

Part Number 360 X 10219 X

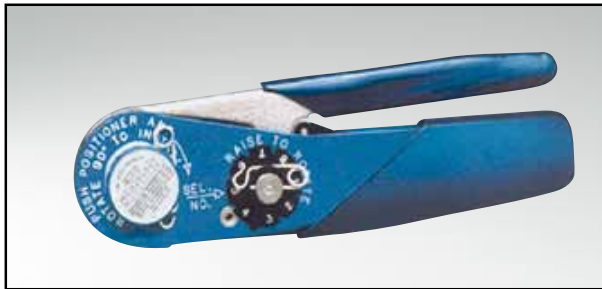


DESCRIPTION _____

Hand Crimp tool
for high power contact (solder / crimp)

Part Number 360 X 12269 X





DESCRIPTION _____

Hand Crimp tool
for coaxial contacts (inner conductor) and D-SUB
signal crimp contacts standard and High Density
(Inserts must be ordered separately)

Part Number 360 X 10329 X



DESCRIPTION _____

Inserts for above hand crimp tool

**Inserts for hand crimp tool
for use with hand crimp tool 360 X 10329 X**

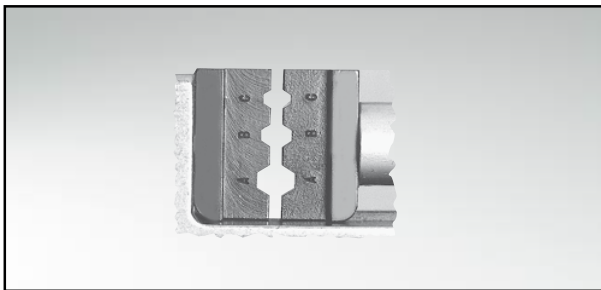
Plug Connector	Socket connector	Tool insert	Insert cavity	
131 C 15019 X	132 C 15019 X	360 X 20039 X	depends on wire select cavity	
131 C 15029 X	132 C 15029 X	360 X 20039 X		
131 J 21019 X	132 J 21019 X	360 X 11049 X	AWG Cavity	
131 J 21029 X	132 J 21029 X	360 X 11049 X		
131 J 21039 X	132 J 21039 X	360 X 11049 X		
131 J 23019 X	132 J 23019 X	360 X 11059 X		
131 J 31019 X	132 J 31019 X	360 X 11049 X		24 → 5
131 J 31029 X	132 J 31029 X	360 X 11049 X		26 → 5
131 J 33019 X	132 J 33019 X	360 X 11059 X		28 → 4
				30 → 3
161 A 18009 X	162 A 18419 X	360 X 10629 X		
	162 A 18709 X	360 X 20069 X		
	162 A 18719 X	360 X 20069 X		



DESCRIPTION _____

Hand Crimp tool
for coaxial contacts (outer conductor),
(Inserts must be ordered separately)

Part Number 360 X 10519 X



DESCRIPTION _____

Inserts for above hand crimp tool

**Inserts for hand crimp tool coaxial contacts (outer conductor)
for use with hand crimp tool 360X 10519 X**

Plug Connector	Socket connector	Tool insert	Insert cavity
131 J 20019 X	132 J 20019 X	360 X 11019 X	C
131 J 20029 X	132 J 20029 X	360 X 11019 X	B
131 J 20039 X	132 J 20039 X	360 X 11019 X	A
131 J 20049 X	132 J 20049 X	360 X 11029 X	A
131 J 20059 X	132 J 20059 X	360 X 11039 X	B
131 J 21019 X	132 J 21019 X	360 X 11019 X	B
131 J 21029 X	132 J 21029 X	360 X 11039 X	B
131 J 21039 X	132 J 21039 X	360 X 11029 X	A
131 J 22019 X	132 J 22019 X	360 X 11019 X	B
131 J 22029 X	132 J 22029 X	360 X 11019 X	C
131 J 22039 X	132 J 22039 X	360 X 11039 X	B
131 J 23019 X	132 J 23019 X	360 X 11019 X	B
131 J 30019 X	132 J 30019 X	360 X 11019 X	B
131 J 30029 X	132 J 30029 X	360 X 11019 X	B
131 J 31019 X	132 J 31019 X	360 X 11019 X	B
131 J 31029 X	132 J 31029 X	360 X 11019 X	A
131 J 33019 X	132 J 33019 X	360 X 11019 X	B



DESCRIPTION

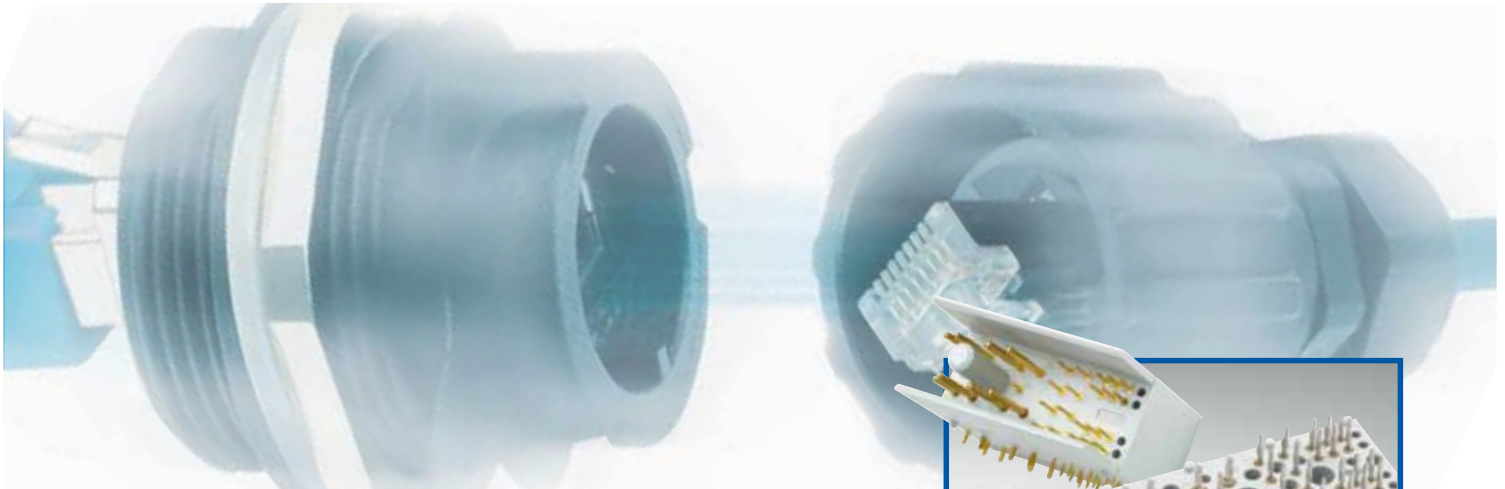
Manually operated lever press

Part Number 360 X 12369 X



DESCRIPTION

PRESS IN TOOL SETS		
Design	Type	Part Number
Combination D-SUB Connectors	2W2C	360 X 00159 X
Combination D-SUB Connectors	3W3	360 X 00169 X
Combination D-SUB Connectors	3W3C	360 X 00169 X
Combination D-SUB Connectors	5W5	360 X 00179 X
Combination D-SUB Connectors	8W8	360 X 00189 X
Plug Connector	9 pos. /15 pos.HD	360 X 15019 X
Plug Connector	15 pos. /26 pos.HD	360 X 15029 X
Plug Connector	25 pos. /44 pos.HD	360 X 15039 X
Plug Connector	37 pos. /62 pos.HD	360 X 15049 X
Plug Connector	50 pos. /78 pos.HD	360 X 15059 X
Socket Connector	9 pos. /15 pos.HD	360 X 15069 X
Socket Connector	15 pos. /26 pos.HD	360 X 15079 X
Socket Connector	25 pos. /44 pos.HD	360 X 15089 X
Socket Connector	37 pos. /62 pos.HD	360 X 15099 X
Socket Connector	50 pos. /78 pos.HD	360 X 15109 X



Connecting with quality

CONEC – the specialist for connecting technology in

- Filter technology (EMI/RFI)
- Connectors for harsh environments
- Combination connectors (Power and Coax)
- Connectors referring to PICMG standard (ATCA, μ TCA, CPCI)
- M12 circular connectors for High Temp, Food+Beverage amongst others

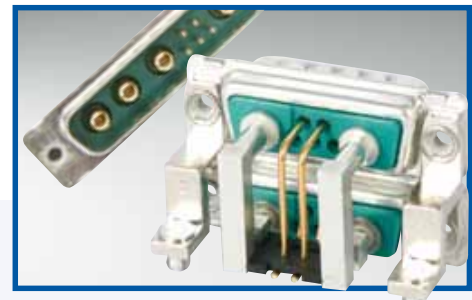
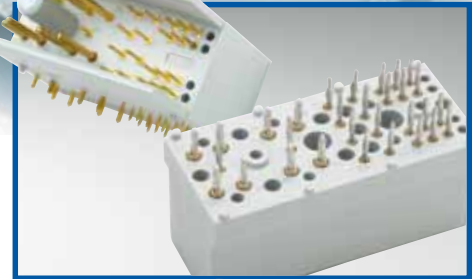
CONEC offers the ideal solution for your application too. Ask for information right now!

CompactPCI[®]

μ TCA[™]

Advanced TCA

Member of **PICMG**



www.conec.com

CONEC[®]
TECHNOLOGY IN CONNECTORS[™]

X-ON Electronics

Largest Supplier of Electrical and Electronic Components

Click to view similar products for [Crimpers / Crimping Tools](#) category:

Click to view products by [CONEC](#) manufacturer:

Other Similar products are found below :

[010-0096](#) [M225201-06](#) [M225202-37](#) [6-1579015-5](#) [CT150-6-RH07](#) [622-6441LF](#) [M322](#) [6-304052-1](#) [63456-0054](#) [63484-3701](#) [63800-8355](#)
[63819-1875](#) [63819-2875](#) [63819-4475](#) [63823-3475](#) [63827-5375](#) [64001-0975](#) [64001-4175](#) [64005-0175](#) [662903-2](#) [690602-6](#) [7-1579001-9](#) [7-](#)
[23471-1](#) [762637-1](#) [808714-1](#) [811242-5](#) [999-50-020083](#) [1-21002-3](#) [1-21002-7](#) [12085270](#) [1-21002-6](#) [1-21113-6](#) [1-22548-4](#) [125442-1](#)
[DCE.91.073.BVC](#) [DCE.91.090.3MVM](#) [DCE.91.130.5MVU](#) [DCE.91.202.BVCM](#) [1338300-1](#) [1-354003-0](#) [1338301-1](#) [DF62/RE-MD](#) [142321](#)
[1456088-1](#) [1490794-1](#) [1-45804-6](#) [1490357-2](#) [1490357-3](#) [AX100749](#) [1-59619-7](#)