

Technical specification:

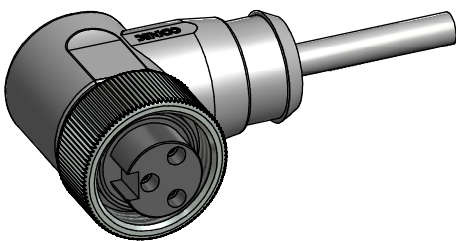
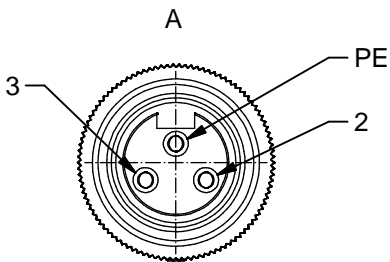
Rated voltage: IEC 60664-1	300 V
Overvoltage category: IEC 60664-1	2
Overvoltage: IEC 60664-1	2,7 kV
Current rating: IEC 60512-3 at 40°C	0,75mm ² 1,5mm ² 8 A 12 A
Insulation resistance: IEC 60512	>=100 MΩ
Pollution degree: IEC 60664-1	3/2
Degree of protection: IEC 60529	IP 68, in mated condition
Temperature range: IEC 60664-1	-30°C ... +80°C
Mating cycles: IEC 60512-9a	>=100
Termination:	crimped

Materials:

Contact:	CuZn
Contact plating:	Nickel, gold plated
Contact carrier:	TPU, UL 94
Coupling nut:	CuZn, nickel plated
Moulding body:	TPU, UL 94, grey

Contact assignment:

PE	green-yellow
2)	brown
3)	blue



Part no:	Description:	Length L:	Cable:
41-01016	SAL - 7/8 - RKW2PE - 2 / A6	2m	PVC, UL 20207, grey, 3x0,75mm ² Cable: 781-A67300
41-01017	SAL - 7/8 - RKW2PE - 3 / A6	3m	
41-01018	SAL - 7/8 - RKW2PE - 5 / A6	5m	
41-01019	SAL - 7/8 - RKW2PE - 10 / A6	10m	
41-xxxxx	SAL - 7/8 - RKW2PE - ... / A6	x	
41-01113	SAL - 7/8 - RKW2PE - 2 / A6 / 150	2m	PVC, UL 20207, grey, 3x1,50mm ² Cable: 781-A68300
41-01114	SAL - 7/8 - RKW2PE - 3 / A6 / 150	3m	
41-01115	SAL - 7/8 - RKW2PE - 5 / A6 / 150	5m	
41-01116	SAL - 7/8 - RKW2PE - 10 / A6 / 150	10m	
41-xxxxx	SAL - 7/8 - RKW2PE - ... / A6 / 150	x	

D see data sheet cable

DO NOT ALTER CAD DRAWING BY HAND Directive 2002/95/EC RoHS compliant	Index: b 02.02.11 VF Ä3891 cable type changed, technical specification changed, part no. cable in table added, neutral line added	dim. in mm		title: Female connector 7/8" angled	
	tolerance of cable: L ≤ 4m: L + 40mm L > 4m: L + 1%	drawn 11.10.07 Franz	date name		
	general tolerance: 0 ± 0,50mm 0,0 ± 0,25mm 0,00 ± 0,10mm	appd. 11.10.07 Mankopf			dwg no: 41K1A309
	THIS DRAWING MAY NOT BE COPIED OR REPRODUCED IN ANY WAY, AND MAY NOT BE PASSED ON TO A THIRD PARTY WITHOUT WRITTEN PERMISSION. OWNERSHIP AND COPYRIGHT OF CONEC GmbH	part no: see table			

X-ON Electronics

Largest Supplier of Electrical and Electronic Components

Click to view similar products for [Circular Metric Connectors](#) category:

Click to view products by [CONEC](#) manufacturer:

Other Similar products are found below :

[600X518037X](#) [6STD15PCR99B70A](#) [8R4000A16M020](#) [8R5000A16M005](#) [1200910002](#) [1203580030](#) [1200910008](#) [1200910011](#) [1300140094](#)
[130203-0054](#) [1300140026](#) [1300150099](#) [RF-12S1N8A90DU](#) [1-3637-600-5205](#) [1612618](#) [21036836414](#) [8R4006A16M010](#) [8R5006A18A120](#)
[1604232](#) [1R3006A20M005](#) [RF-12P1N8A80DU](#) [RF-12P1N8A90DU](#) [41-40011](#) [42-01015](#) [4-22279-4](#) [4-22281-1](#) [4-22284-9](#) [43-00113](#) [43-](#)
[01088](#) [43-01203](#) [41-40013](#) [42-00008](#) [43-00343](#) [43-01032](#) [43-01162](#) [43-10000](#) [600X518050X](#) [SACC-DSI-FS-5P-PG9-L180 SC](#)
[8R5006A16M020](#) [8R5006A16M005](#) [8R4000A16M010](#) [6-22279-3](#) [1605332](#) [N03FA03144](#) [1300140077](#) [43-01338](#) [XS2RD4265](#) [RSC 4/9](#)
[XS2R-D426-1](#) [XS8A-0441](#)