

Technical specification:

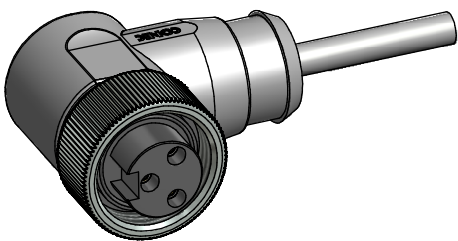
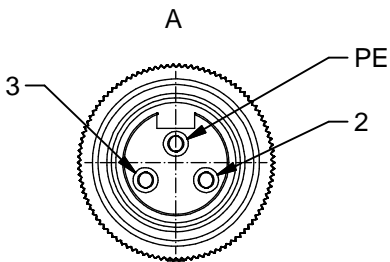
Rated voltage: IEC 60664-1	300 V
Overvoltage category: IEC 60664-1	2
Overvoltage: IEC 60664-1	2,7 kV
Current rating: IEC 60512-3 at 40°C	0,75mm ² 1,5mm ² 8 A 12 A
Insulation resistance: IEC 60512	>=100 MΩ
Pollution degree: IEC 60664-1	3/2
Degree of protection: IEC 60529	IP 68, in mated condition
Temperature range: IEC 60664-1	-30°C ... +80°C
Mating cycles: IEC 60512-9a	>=100
Termination:	crimped

Materials:

Contact:	CuZn
Contact plating:	Nickel, gold plated
Contact carrier:	TPU, UL 94
Coupling nut:	CuZn, nickel plated
Moulding body:	TPU, UL 94, grey

Contact assignment:

- PE) green-yellow
- 2) brown
- 3) blue



Part no:	Description:	Length L:	Cable:
41-01016	SAL - 7/8 - RKW2PE - 2 / A6	2m	PVC, UL 20207, grey, 3x0,75mm ² Cable: 781-A67300
41-01017	SAL - 7/8 - RKW2PE - 3 / A6	3m	
41-01018	SAL - 7/8 - RKW2PE - 5 / A6	5m	
41-01019	SAL - 7/8 - RKW2PE - 10 / A6	10m	
41-xxxxx	SAL - 7/8 - RKW2PE - ... / A6	x	
41-01113	SAL - 7/8 - RKW2PE - 2 / A6 / 150	2m	PVC, UL 20207, grey, 3x1,50mm ² Cable: 781-A68300
41-01114	SAL - 7/8 - RKW2PE - 3 / A6 / 150	3m	
41-01115	SAL - 7/8 - RKW2PE - 5 / A6 / 150	5m	
41-01116	SAL - 7/8 - RKW2PE - 10 / A6 / 150	10m	
41-xxxxx	SAL - 7/8 - RKW2PE - ... / A6 / 150	x	

D see data sheet cable

DO NOT ALTER CAD DRAWING BY HAND Directive 2002/95/EC RoHS compliant	Index: b 02.02.11 VF Ä3891 cable type changed, technical specification changed, part no. cable in table added, neutral line added	dim. in mm	title: Female connector 7/8" angled	
	tolerance of cable: L ≤ 4m: L + 40mm L > 4m: L + 1%		date 11.10.07	name Franz
	general tolerance: 0 ± 0,50mm 0,0 ± 0,25mm 0,00 ± 0,10mm	appd. 11.10.07		part no: see table
	<small>THIS DRAWING MAY NOT BE COPIED OR REPRODUCED IN ANY WAY, AND MAY NOT BE PASSED ON TO A THIRD PARTY WITHOUT WRITTEN PERMISSION. OWNERSHIP AND COPYRIGHT OF CONEC GmbH</small>			

X-ON Electronics

Largest Supplier of Electrical and Electronic Components

Click to view similar products for [Sensor Cables / Actuator Cables](#) category:

Click to view products by [CONEC](#) manufacturer:

Other Similar products are found below :

[60963](#) [60964](#) [703000D02F2002](#) [703000D02F300](#) [703001D02F0602](#) [703001D02F300](#) [704000D02F120](#) [773032K02F030](#) [802027107404-1](#)
[802027213811-1](#) [804001A09M150](#) [805001A09M0502](#) [84914-0235](#) [84914-0237](#) [885030A09M020](#) [1200651332](#) [1200651713](#) [1200660844](#)
[1200660845](#) [1200661173](#) [1200680071](#) [1200720053](#) [1200720081](#) [1200720099](#) [1200720217](#) [1200800231](#) [1200860125](#) [1200870123](#)
[1200980102](#) [1200650267](#) [1200650298](#) [1200660183](#) [1200660782](#) [1200660849](#) [1200661295](#) [1200661297](#) [1200661342](#) [1200661343](#)
[1200670080](#) [1200670220](#) [1200680331](#) [1200720252](#) [1200730184](#) [1200860344](#) [1200870359](#) [1200870643](#) [1200980008](#) [1200980031](#)
[1210502211](#) [1210400542](#)