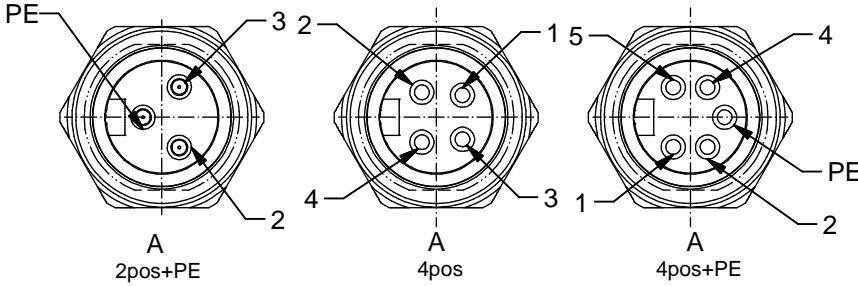


**Technical specification:**

Rated voltage: IEC 60664-1	300 V
Overvoltage category: IEC 60664-1	2
Overvoltage: IEC 60664-1	2,7 kV
Current rating: IEC 60512-3 at 40°C	AWG 18 8 A    AWG 16 12 A
Insulation resistance: IEC 60512	>=100 MΩ
Pollution degree: IEC 60664-1	3/2
Degree of protection: IEC 60529	IP 67, in mated condition
Temperature range: IEC 60664-1	-30°C ... +75°C
Mating cycles: IEC 60512-9a	>=100
Termination:	crimped

**Materials:**

Contact:	CuZn
Contact plating:	Nickel, gold plated
Contact carrier:	TPU, UL 94
Sealing:	FPM
Socket housing:	CuZn, nickel plated
Counter nut:	CuZn, nickel plated



**Contact assignment:**

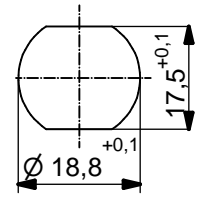
- PE ■ green-yellow
- 2 ■ brown
- 3 ■ blue

**Contact assignment:**

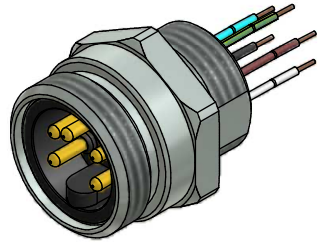
- 1 ■ brown
- 2 ■ white
- 3 ■ blue
- 4 ■ black

**Contact assignment:**

- 1 ■ black
- 2 ■ blue
- PE ■ green-yellow
- 4 ■ brown
- 5 ■ white



Minimum wall thickness 2,5mm, alternativ panel cut-out d=18,8



Part no:	Description:	Pos	Wire:
41-40024	SAL - 7/8 - FS2PE - 0,5 - 11	3	AWG 18 PVC, UL
41-40025	SAL - 7/8 - FS4 - 0,5 - 11	4	AWG 18 PVC, UL
41-40026	SAL - 7/8 - FS4PE - 0,5	5	AWG 18 PVC, UL
41-40033	SAL - 7/8 - FS2PE - 0,5/150 - 11	3	AWG 16 PVC, UL
41-40034	SAL - 7/8 - FS4 - 0,5/150 - 11	4	AWG 16 PVC, UL
41-40035	SAL - 7/8 - FS4PE - 0,5/150 - 11	5	AWG 16 PVC, UL

DO NOT ALTER CAD DRAWING BY HAND Directive 2002/95/EC RoHS compliant	Index: d 18.10.11 fro Ä4130 Temperatur changed	dim. in mm	<b>title:</b> <b>Male socket 7/8" with wire, frontmounting, PG11</b>									
	tolerance of wire: L <= 0,5m: L + 20mm L > 0,5m: L + 4%	<table border="1" style="font-size: 8px; border-collapse: collapse;"> <tr> <td style="width: 30px;"></td> <td style="width: 60px;">date</td> <td style="width: 60px;">name</td> </tr> <tr> <td>drawn</td> <td>08.12.08</td> <td>Fromm</td> </tr> <tr> <td>appd.</td> <td>08.12.08</td> <td>W.Schmidt</td> </tr> </table>			date	name	drawn	08.12.08	Fromm	appd.	08.12.08	W.Schmidt
		date	name									
	drawn	08.12.08	Fromm									
appd.	08.12.08	W.Schmidt										
<table border="0" style="font-size: 8px;"> <tr> <td style="padding-right: 5px;">general tolerance:</td> <td>0 ± 0,50mm</td> </tr> <tr> <td></td> <td>0,0 ± 0,25mm</td> </tr> <tr> <td></td> <td>0,00 ± 0,10mm</td> </tr> </table>	general tolerance:	0 ± 0,50mm		0,0 ± 0,25mm		0,00 ± 0,10mm	<b>CONEC</b> ®	<b>part no:</b>				
general tolerance:	0 ± 0,50mm											
	0,0 ± 0,25mm											
	0,00 ± 0,10mm											
THIS DRAWING MAY NOT BE COPIED OR REPRODUCED IN ANY WAY, AND MAY NOT BE PASSED ON TO A THIRD PARTY WITHOUT WRITTEN PERMISSION. OWNERSHIP AND COPYRIGHT OF CONEC GmbH												

## X-ON Electronics

Largest Supplier of Electrical and Electronic Components

*Click to view similar products for [Sensor Cables / Actuator Cables](#) category:*

*Click to view products by [CONEC](#) manufacturer:*

Other Similar products are found below :

[60963](#) [60964](#) [703000D02F2002](#) [703000D02F300](#) [703001D02F0602](#) [703001D02F1201](#) [703001D02F300](#) [704000D02F120](#) [773032K02F030](#)  
[802027107404-1](#) [802027213811-1](#) [804001A09M150](#) [805001A09M0502](#) [84914-0235](#) [84914-0237](#) [885030A09M020](#) [1200651332](#)  
[1200651713](#) [1200660844](#) [1200660845](#) [1200661173](#) [1200680071](#) [1200720053](#) [1200720081](#) [1200720099](#) [1200720217](#) [1200800231](#)  
[1200860125](#) [1200870123](#) [1200980102](#) [1200650267](#) [1200650298](#) [1200660183](#) [1200660782](#) [1200660849](#) [1200661295](#) [1200661297](#)  
[1200661342](#) [1200661343](#) [1200670080](#) [1200670220](#) [1200680331](#) [1200720252](#) [1200720255](#) [1200730184](#) [1200860344](#) [1200870359](#)  
[1200870643](#) [1200980008](#) [1200980031](#)